



**Fundamental principles and basic elements  
of Partnership on AI visual style**



# Brand Elements

# MOODBOARD

Brand Elements



# LOGOTYPE

01 PAI primary logo  
02 PAI brandmark for use such as social media, favicon and secondary collaterals

01



**PARTNERSHIP ON AI**

02



# LOGO COLOR COMBINATIONS

- Option 01
- Option 02
- Option 03
- Option 04
- Option 05

01



02



03



04

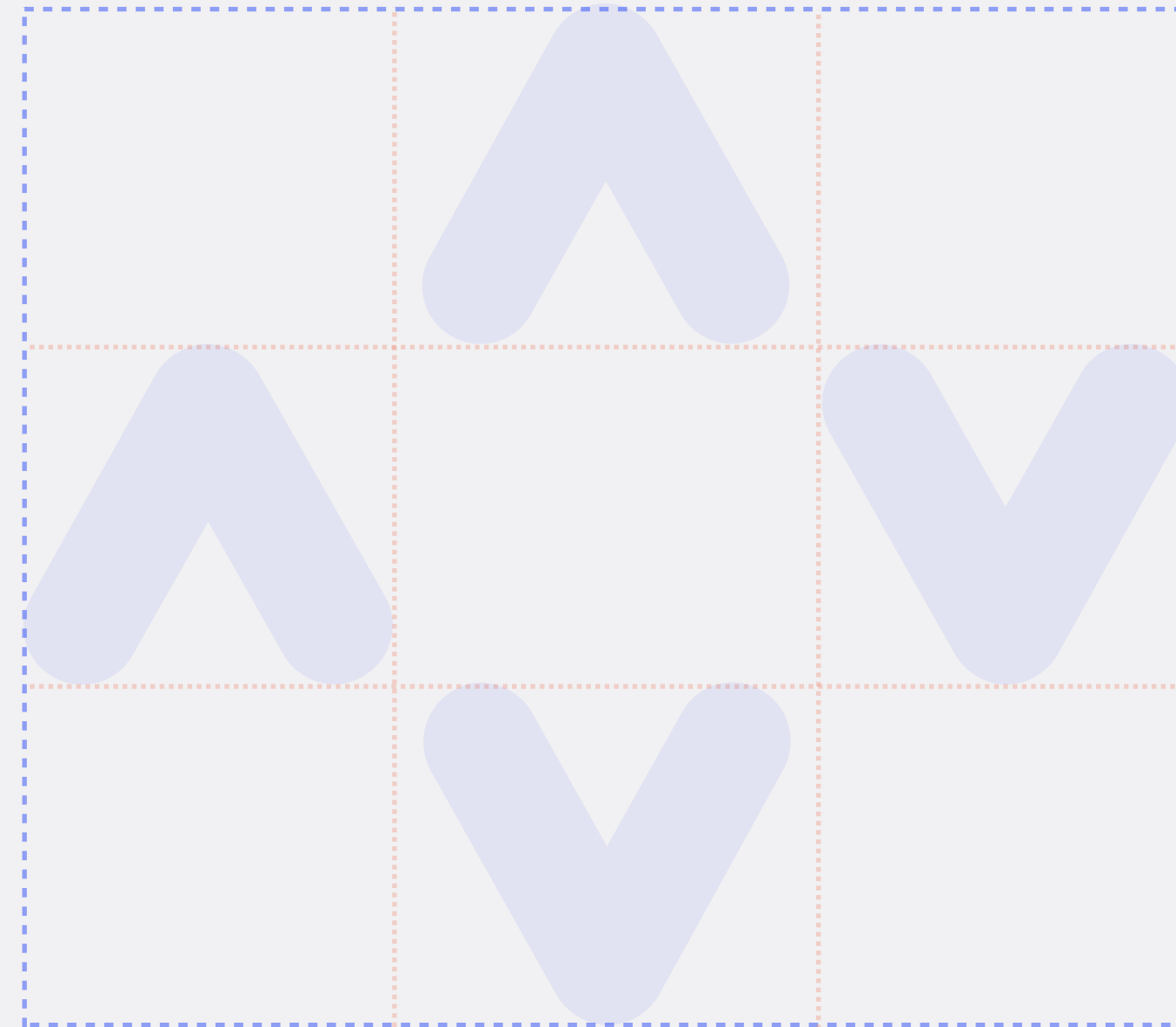


05



# LOGOTYPE'S SAFE AREAS

A generous amount of space, or 'safe area', must surround the logo. Text or other graphic elements should not be placed within this area



# UNACCEPTABLE LOGO TREATMENT

- 01 Scaling of the logo either vertically or horizontally
- 02 Changing the proportions of the logo elements
- 03 Adding new design elements to the logo
- 04 The use of inappropriate colors

01



**PARTNERSHIP ON AI**

02



**PARTNERSHIP ON AI**

03



**PARTNERSHIP ON AI**

04



**PARTNERSHIP ON AI**

01 Display brand font. The display font is meant to be used for titles and short sentences

02 Text font. Text font, or secondary font, creates a rich feeling of contrast and balance when paired with our display font

01

Josefin Sans - bold

ABCDEFGHIJKLMNOPQRSTUVWXYZ

abcdefghijklmnopqrstuvwxyz

1234567890!@#%&\*()

02

Karla - regular

ABCDEFGHIJKLMNOPQRSTUVWXYZ

abcdefghijklmnopqrstuvwxyz

1234567890!@#%&\*()

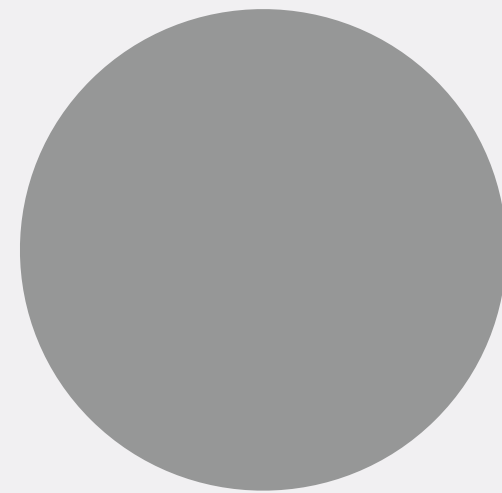


# PRIMARY COLOR PALETTE

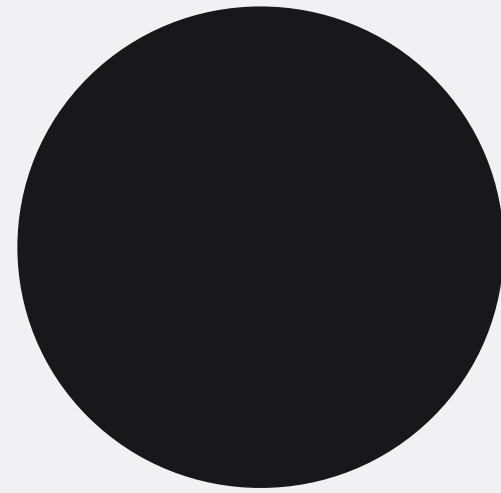
Our core color palette is minimal which allows the overall branding to stay timeless and not feel dated in a few years

The combination of cream and grey gradient offers inviting and elegant options for the backgrounds and major graphic elements

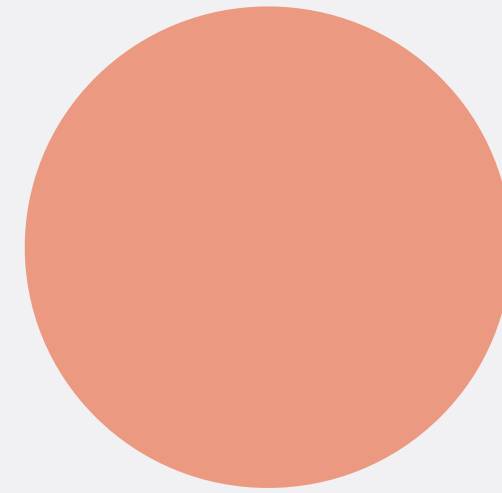
Emphasis colors such as blue and shade of salmon should be paired with the neutral color palette to stay aligned with the branding



R=150 G=151 B=151  
C=0 M=0 Y=0 K=47  
Pantone P 179-7 C  
#969797



R=24 G=24 B=26  
C=74 M=68 Y=64 K=78  
Pantone 20-0200 TPM  
Gunpowder  
#18181a



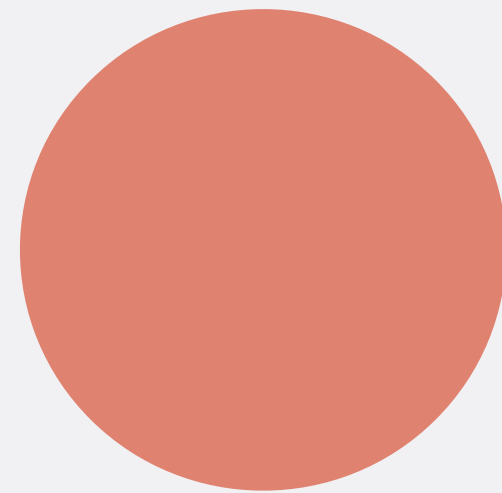
R=236 G=153 B=130  
C=0 M=49 Y=40 K=0  
Pantone P 52-4 U  
#ec9982



R=8 G=87 B=195  
C=93 M=66 Y=0 K=0  
Pantone 2132 C  
#0857c3

# EXTENDED COLOR PALETTE

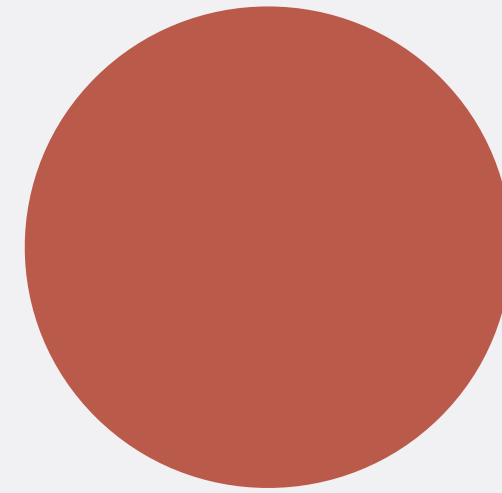
The extended color palette is mainly used for graphic elements such as typography, frames, illustrations, buttons and text



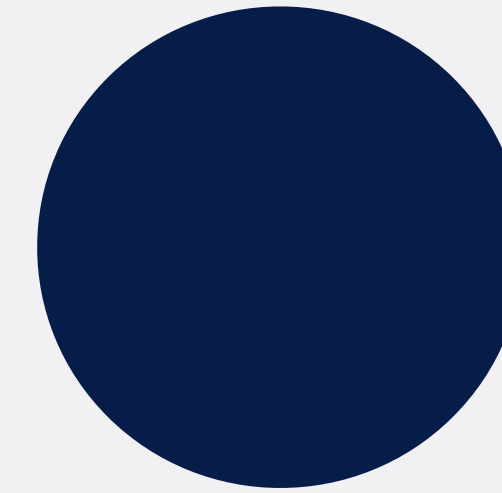
R=223 G=130 B=112  
C=0 M=60 Y=39 K=1  
Pantone 2030C  
#df8270



R=100 G=144 B=232  
C=67 M=39 Y=0 K=0  
Pantone 2727 U  
#6490E8



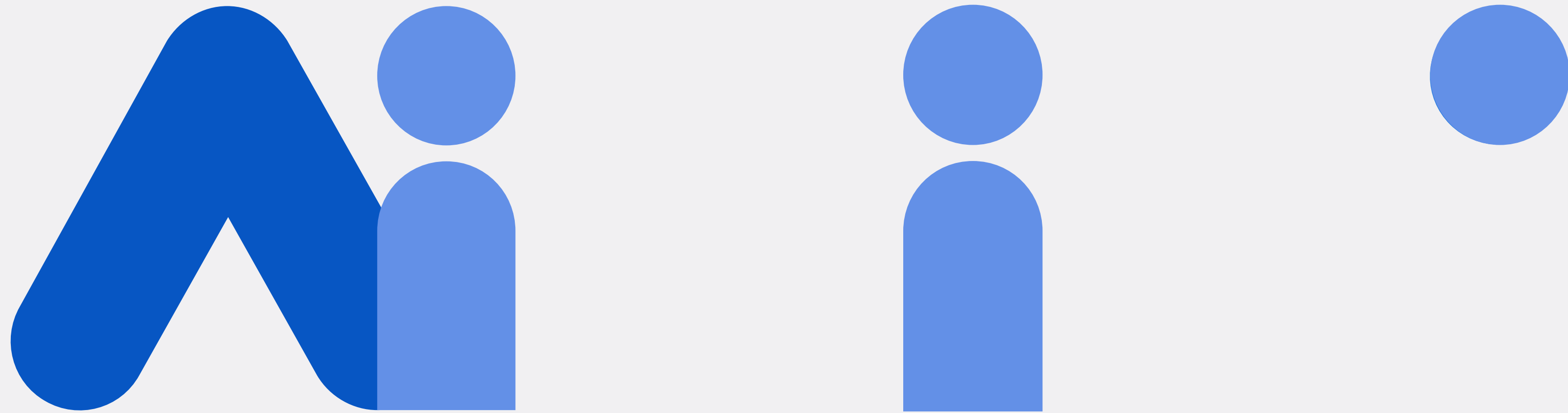
R=186 G=90 B=75  
C=0 M=75 Y=98 K=13  
Pantone P 34-16 U  
#ba5a4b



R=7 G=29 B=73  
C=100 M=78 Y=0 K=66  
Pantone 2768 C  
#071D49

# SYMBOL

The graphic element is based on a circle as part of "i"



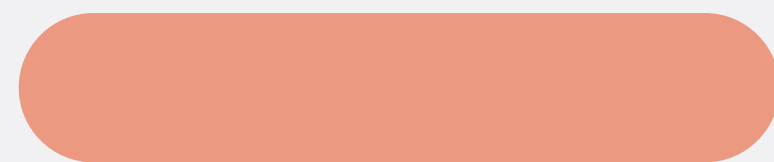
# GRAPHIC ELEMENTS

- 01 Circle
- 02 Button
- 03 Many circles
- 04 intersection circles
- 05 Many dots

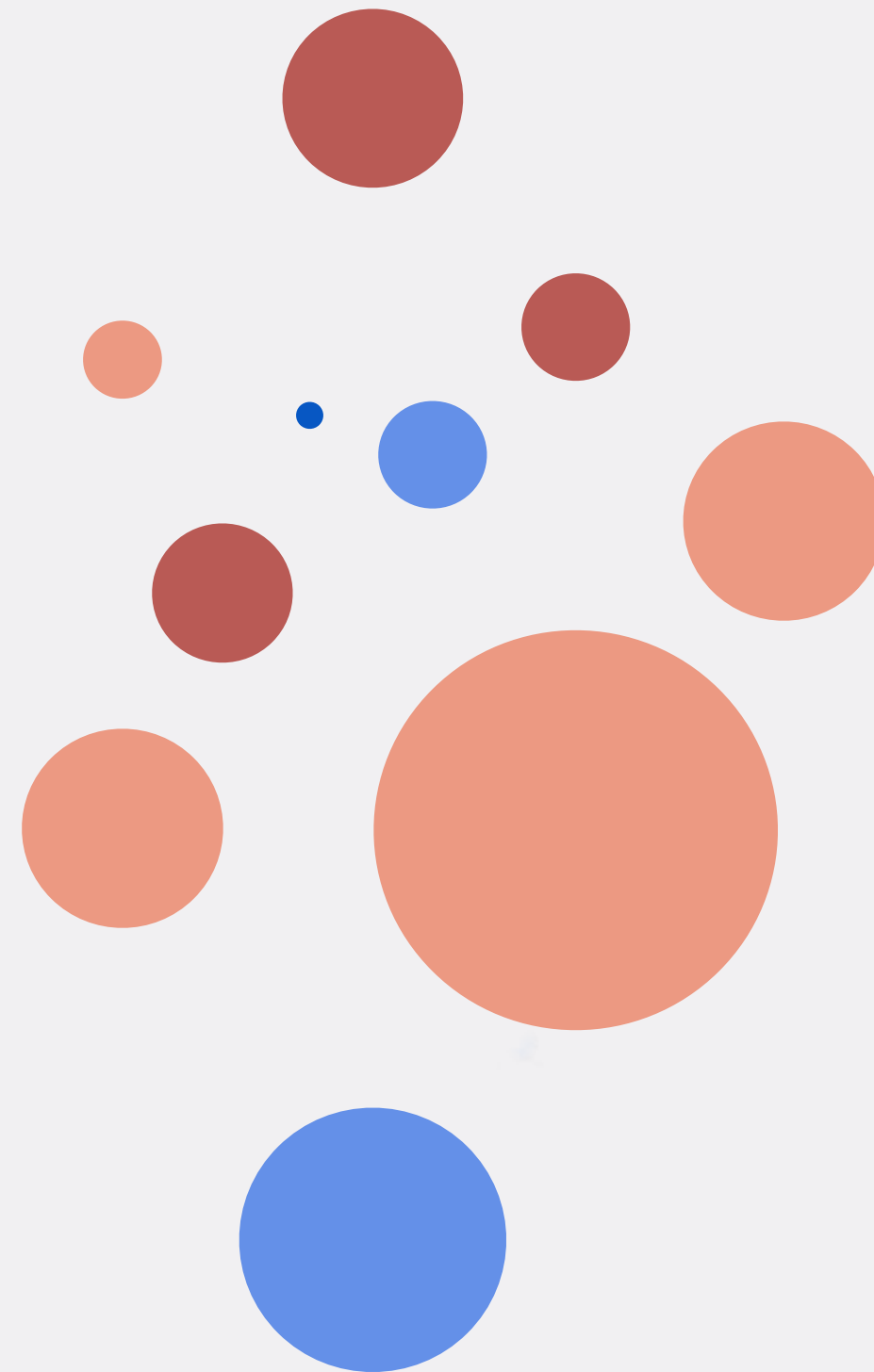
01



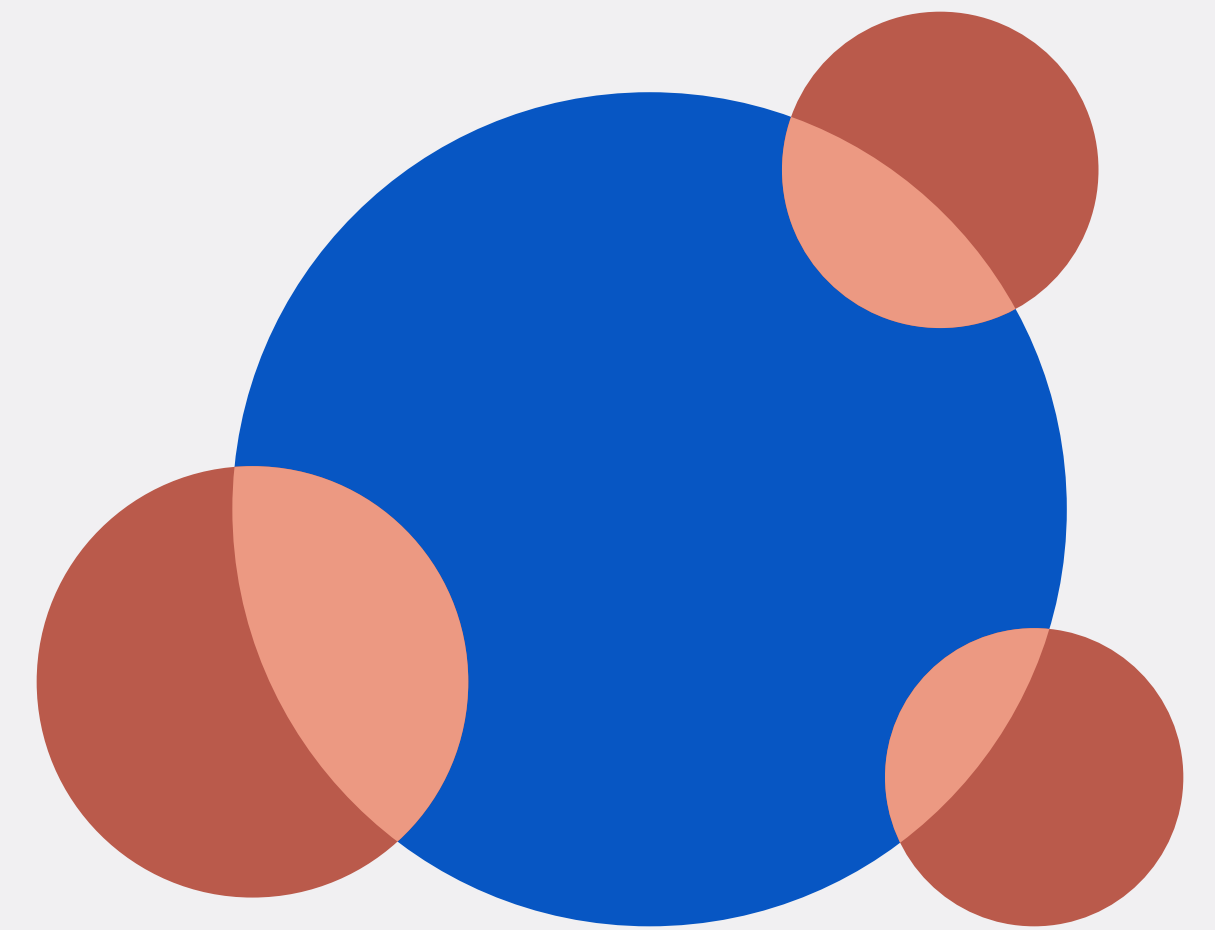
02



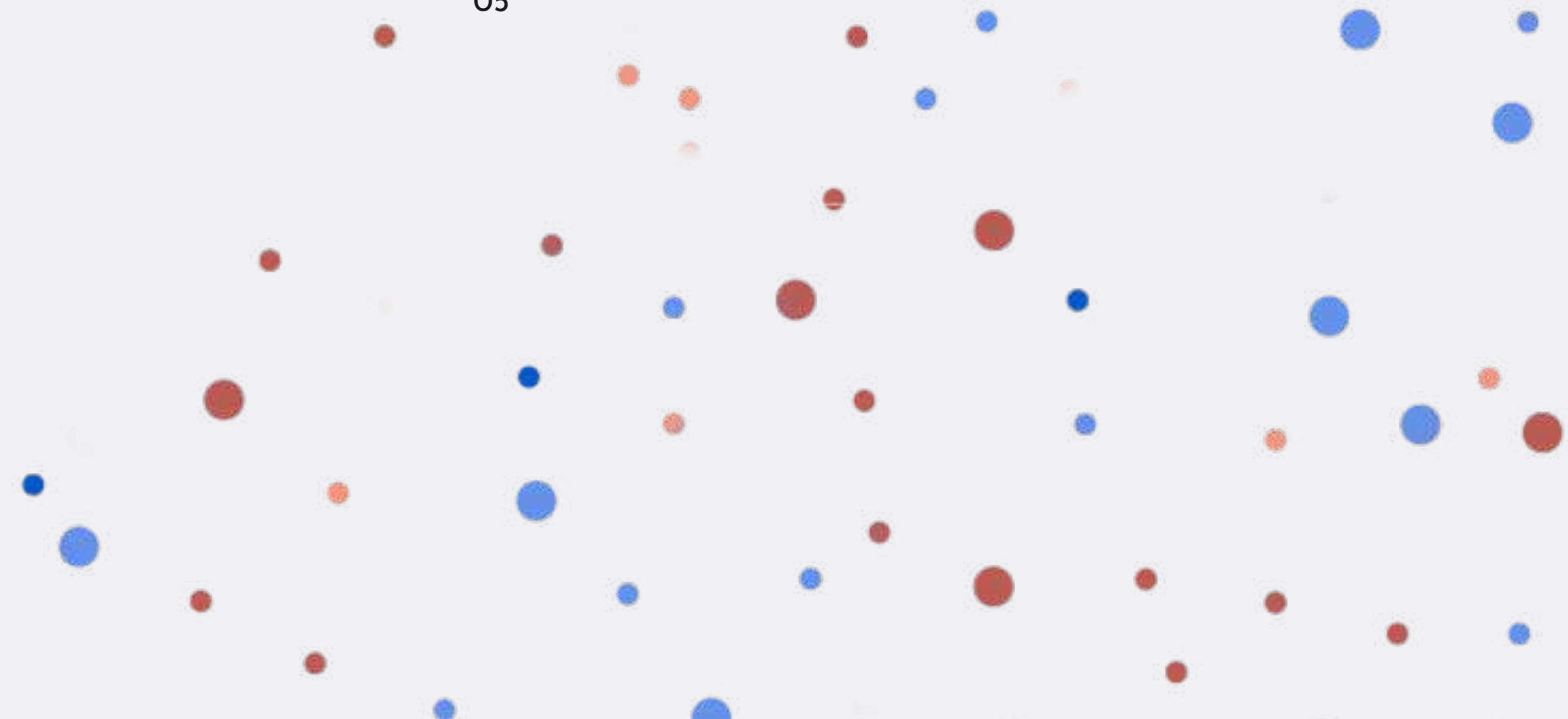
03



04

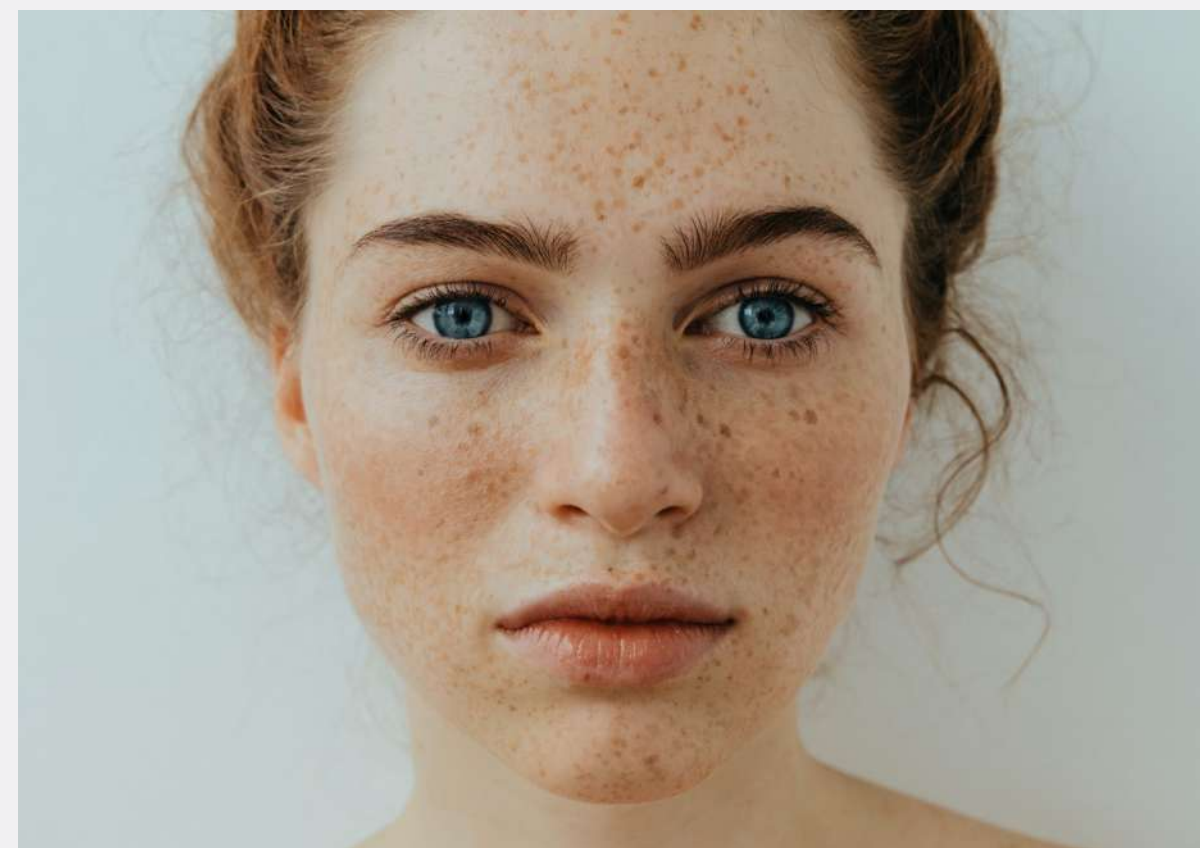


05



# IMAGE USE GUIDELINES

It is recommended to choose images displaying connection between new technologies and people. Portraits should engage through the warm and emotional portrayal of individuals or groups. It is recommended to choose correctly exposed, sharp images with good contrast. Photographs should be natural and don't look like staging footage



# INAPPROPRIATE CHOICE OF PHOTOGRAPHS

It is forbidden to use stock photo images. Photographs should not be overloaded with details, overly contrast or too straightforward.



The slide features a solid blue background with several decorative circles. There are two large light blue circles, one in the top-left and one in the bottom-right. There are also two large dark blue circles, one in the top-right and one in the bottom-left. A small light blue circle is positioned above the text, and a small dark blue circle is positioned below the text.

# Core Messaging

# ABOUT US

The Partnership on AI is the leading forum addressing the most important and difficult decisions on the future of AI.

We are a non-profit that invites diverse voices into the process of technical governance, design, and deployment of AI technologies.

Our essential Partners work together across industry, academia, and civil society to understand the implications of AI advancements and ensure they benefit society equitably.

Through dialogue, insight, education, and guidance, PAI informs responsible AI solutions and identifies opportunities to address humanity's pressing challenges.





TAGLINE

# Advancing Responsible AI

# OUR DEFINITION

## Responsible AI

The practice of developing and ensuring AI technologies are ethical, transparent, and inclusive for the benefit of people and society.

## People & Society

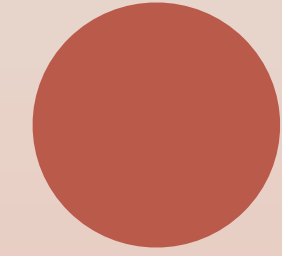
We seek to ensure that AI technologies benefit and empower as many people as possible, including underrepresented groups and marginalized communities.



**BRAND PROMISE**

**The most trusted  
forum on  
Responsible AI**

# MANIFESTO



Diverse voices are essential to evolve AI Responsibly.

The PAI forum provides a safe, trusted space for hard conversations.

Our structured process activates a breadth and depth of perspectives that drives alignment and unites forces.

By focusing on equity for people and society, we can create meaningful outcomes that will continue to shape the future of Responsible AI.

## OUR VISION

**A future where Artificial Intelligence empowers humanity by contributing to a more just, equitable and prosperous world.**

# MANITRA

MANITRA

MANITRA

MANITRA



**Diverse voices are  
convening to  
shape AI so it is  
inclusive  
by design.**

## OUR MISSION

**Bring diverse voices together across global sectors, disciplines, and demographics to tackle the most pressing concerns for positive outcomes in the field of AI.**

# PURPOSE

AI holds the promise to progress scientific understanding with the clear potential to equitably advance society. We are seeing rapid adoption across a range of domains and contexts, and the potential for AI technologies to benefit humanity are vast, but like all technologies, AI is not inherently neutral.

We know AI can disproportionately harm communities of color, poor communities, and those otherwise marginalized in society. Careful attention must be paid to ensure that risks and unintended consequences are appropriately considered.

Through collaborative learning and practice, leading civic, academic, scientific, and technology organizations are moving toward executional clarity for what it means to develop Responsible AI.

Piece by piece we're removing uncertainty in the AI field.

Together, with our Partners, we're addressing pertinent challenges and advancing perspectives so Responsible AI can lead the way.



The background is a solid blue color. There are several circles of different sizes and colors scattered across the page. In the top left, there is a medium-sized light blue circle. In the top right, there is a small light blue circle. On the right side, there is a large dark blue circle. In the bottom left, there is a large dark blue circle. In the bottom right, there is a medium-sized light blue circle. In the center, there is a small dark blue circle.

# Our Values

## EQUITY & INCLUSION

As an independent body, PAI exists for the benefit of people and society. We empower diverse voices to participate from ideation through implementation, striving for fairness, equity, and inclusion.

## TRANSPARENCY & ACCOUNTABILITY

We aim to provide and participate in an unbiased process with open hearts and minds. Our work emphasizes shared learning, open dialogue, and direct communication.

## CONVICTION & DEPENDABILITY

Committed to tackling the hard questions through meaningful dialogue, research, insights, and guidance, we're determined to maintain courage in the face of adversity, and are dedicated to facilitating effective processes that lead to significant outcomes.

## LEARNING & COMPASSION

We aim to provide and participate in an unbiased process with open hearts and minds. Our work emphasizes shared learning, open dialogue, and direct communication.

## DILIGENCE & EXCELLENCE

Scientific rigor is at the forefront of our evidence-based approach with leading AI experts, scientists, and researchers who are engaging to produce impactful knowledge-based outputs.

