



# Shell i Norge

Offshore Strategikonferansen  
2024

Torkjel Øvsthus  
A/S Norske Shell



# CAUTIONARY NOTE

The companies in which Shell plc directly and indirectly owns investments are separate legal entities. In this presentation “Shell”, “Shell Group” and “Group” are sometimes used for convenience where references are made to Shell plc and its subsidiaries in general. Likewise, the words “we”, “us” and “our” are also used to refer to Shell plc and its subsidiaries in general or to those who work for them. These terms are also used where no useful purpose is served by identifying the particular entity or entities. “Subsidiaries”, “Shell subsidiaries” and “Shell companies” as used in this presentation refer to entities over which Shell plc either directly or indirectly has control. Entities and unincorporated arrangements over which Shell has joint control are generally referred to as “joint ventures” and “joint operations”, respectively. “Joint ventures” and “joint operations” are collectively referred to as “joint arrangements”. Entities over which Shell has significant influence but neither control nor joint control are referred to as “associates”. The term “Shell interest” is used for convenience to indicate the direct and/or indirect ownership interest held by Shell in an entity or unincorporated joint arrangement, after exclusion of all third-party interest.

## **Forward-looking Statements**

This presentation contains forward-looking statements (within the meaning of the U.S. Private Securities Litigation Reform Act of 1995) concerning the financial condition, results of operations and businesses of Shell. All statements other than statements of historical fact are, or may be deemed to be, forward-looking statements. Forward-looking statements are statements of future expectations that are based on management’s current expectations and assumptions and involve known and unknown risks and uncertainties that could cause actual results, performance or events to differ materially from those expressed or implied in these statements. Forward-looking statements include, among other things, statements concerning the potential exposure of Shell to market risks and statements expressing management’s expectations, beliefs, estimates, forecasts, projections and assumptions. These forward-looking statements are identified by their use of terms and phrases such as “aim”, “ambition”, “anticipate”, “believe”, “could”, “estimate”, “expect”, “goals”, “intend”, “may”, “milestones”, “objectives”, “outlook”, “plan”, “probably”, “project”, “risks”, “schedule”, “seek”, “should”, “target”, “will” and similar terms and phrases. There are a number of factors that could affect the future operations of Shell and could cause those results to differ materially from those expressed in the forward-looking statements included in this presentation, including (without limitation): (a) price fluctuations in crude oil and natural gas; (b) changes in demand for Shell’s products; (c) currency fluctuations; (d) drilling and production results; (e) reserves estimates; (f) loss of market share and industry competition; (g) environmental and physical risks; (h) risks associated with the identification of suitable potential acquisition properties and targets, and successful negotiation and completion of such transactions; (i) the risk of doing business in developing countries and countries subject to international sanctions; (j) legislative, judicial, fiscal and regulatory developments including regulatory measures addressing climate change; (k) economic and financial market conditions in various countries and regions; (l) political risks, including the risks of expropriation and renegotiation of the terms of contracts with governmental entities, delays or advancements in the approval of projects and delays in the reimbursement for shared costs; (m) risks associated with the impact of pandemics, such as the COVID-19 (coronavirus) outbreak; and (n) changes in trading conditions. No assurance is provided that future dividend payments will match or exceed previous dividend payments. All forward-looking statements contained in this presentation are expressly qualified in their entirety by the cautionary statements contained or referred to in this section. Readers should not place undue reliance on forward-looking statements. Additional risk factors that may affect future results are contained in Shell plc’s Form 20-F for the year ended December 31, 2022 (available at [www.shell.com/investor](http://www.shell.com/investor) and [www.sec.gov](http://www.sec.gov)). These risk factors also expressly qualify all forward-looking statements contained in this presentation and should be considered by the reader. Each forward-looking statement speaks only as of the date of this presentation, [7.2.2024]. Neither Shell plc nor any of its subsidiaries undertake any obligation to publicly update or revise any forward-looking statement as a result of new information, future events or other information. In light of these risks, results could differ materially from those stated, implied or inferred from the forward-looking statements contained in this presentation.

## **Shell’s net carbon intensity**

Also, in this presentation we may refer to Shell’s “Net Carbon Intensity”, which includes Shell’s carbon emissions from the production of our energy products, our suppliers’ carbon emissions in supplying energy for that production and our customers’ carbon emissions associated with their use of the energy products we sell. Shell only controls its own emissions. The use of the term Shell’s “Net Carbon Intensity” is for convenience only and not intended to suggest these emissions are those of Shell plc or its subsidiaries.

## **Shell’s net-zero emissions target**

Shell’s operating plan, outlook and budgets are forecasted for a ten-year period and are updated every year. They reflect the current economic environment and what we can reasonably expect to see over the next ten years. Accordingly, they reflect our Scope 1, Scope 2 and Net Carbon Intensity (NCI) targets over the next ten years. However, Shell’s operating plans cannot reflect our 2050 net-zero emissions target and 2035 NCI target, as these targets are currently outside our planning period. In the future, as society moves towards net-zero emissions, we expect Shell’s operating plans to reflect this movement. However, if society is not net zero in 2050, as of today, there would be significant risk that Shell may not meet this target.

## **Forward looking non-GAAP measures**

This presentation may contain certain forward-looking non-GAAP measures such as [cash capital expenditure] and [divestments]. We are unable to provide a reconciliation of these forward-looking Non-GAAP measures to the most comparable GAAP financial measures because certain information needed to reconcile those Non-GAAP measures to the most comparable GAAP financial measures is dependent on future events some of which are outside the control of Shell, such as oil and gas prices, interest rates and exchange rates. Moreover, estimating such GAAP measures with the required precision necessary to provide a meaningful reconciliation is extremely difficult and could not be accomplished without unreasonable effort. Non-GAAP measures in respect of future periods which cannot be reconciled to the most comparable GAAP financial measure are calculated in a manner which is consistent with the accounting policies applied in Shell plc’s consolidated financial statements.

The contents of websites referred to in this presentation do not form part of this presentation.

We may have used certain terms, such as resources, in this presentation that the United States Securities and Exchange Commission (SEC) strictly prohibits us from including in our filings with the SEC. Investors are urged to consider closely the disclosure in our Form 20-F, File No 1-32575, available on the SEC website [www.sec.gov](http://www.sec.gov).



## Ei utfordrande tid

- Klimakrisa
- Krig og geopolitiske spenningar
- Inflasjon i verdsøkonomien
- Volatile energimarknader
- Kapasitetsutfordringar i leverandørkjedene

RESPEKTERE  
NATUREN



POWERING  
**PROGRESS**

SKAPE VERDIAR  
FOR VÅRE EIGARAR



ENERGI TIL  
VELFERD OG VEKST

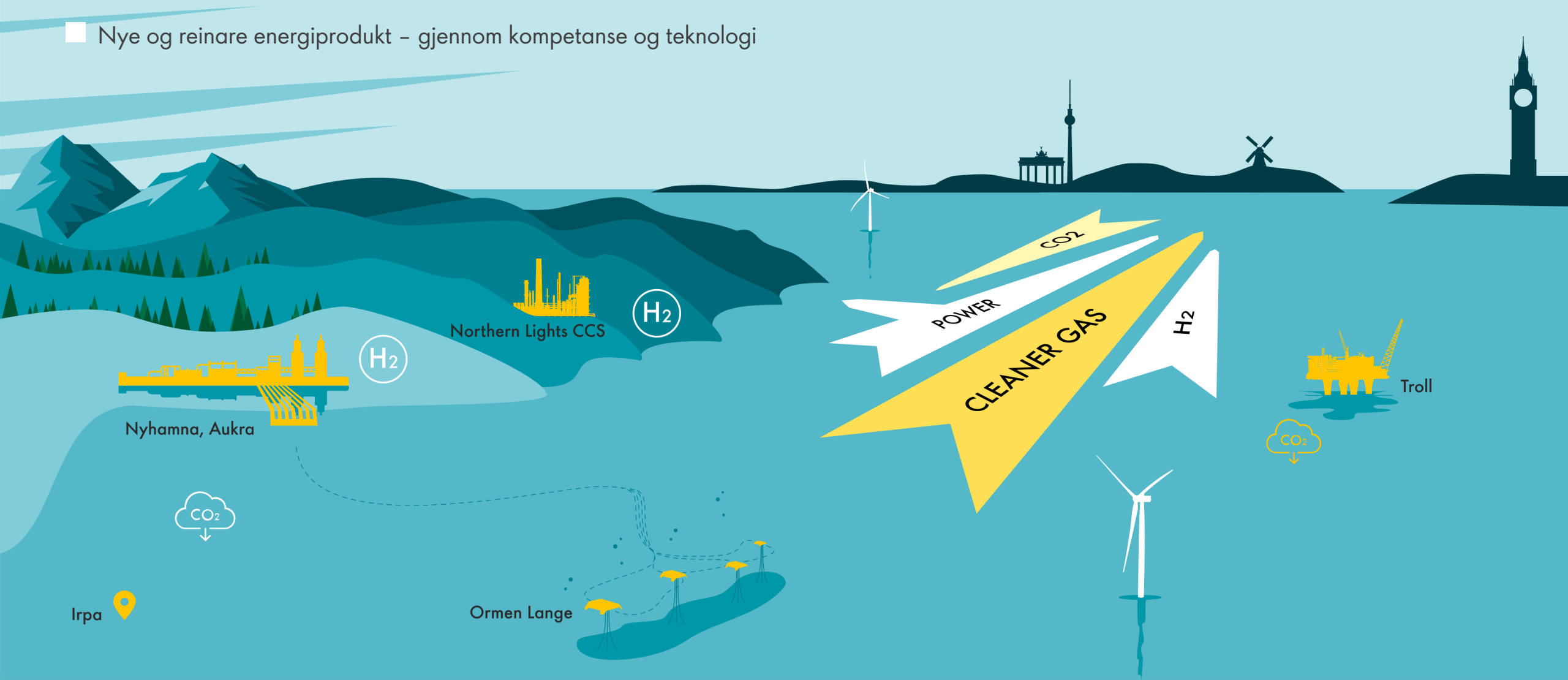


OPPNÅ  
NETTO-NUL UTSLIPP



# Shell i Norge

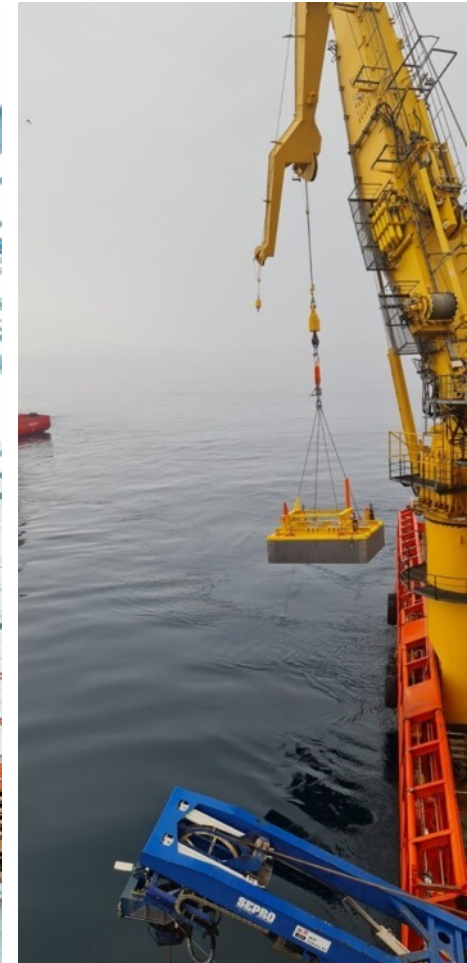
- Fundamentet vårt: Konkurransedyktig gassleveransar med lågt miljøavtrykk
- Karbonfangst og -lagring som ei teneste til industrien på tvers av landegrenser
- Nye og reinare energiprodukt – gjennom kompetanse og teknologi



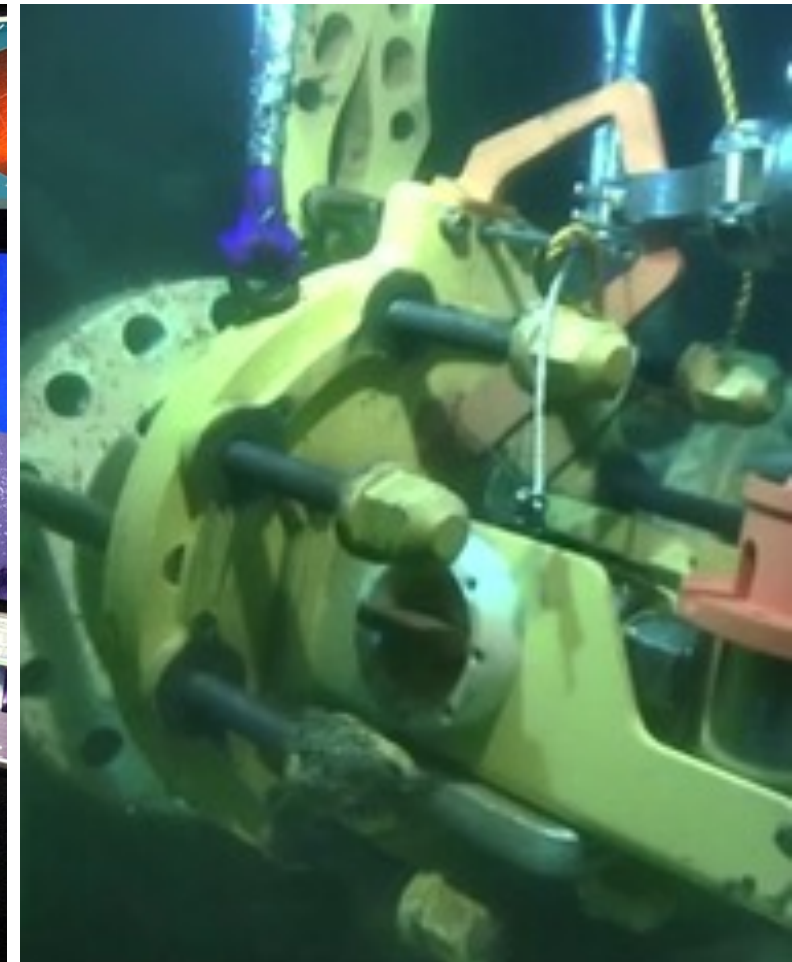
# Nyhamna – eit gassknutepunkt



# Ormen Lange – kompresjon på havbotnen skal auke utvinninga



# Knarr & Gaupe – Shells første avviklingsprosjekt på norsk sokkel



# Reine energiløysningar

Vi bygger på:

- Vår erfaring og kompetanse frå olje og gass



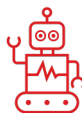
Drilling



Commercial &  
Supply Chain



Subsurface



Digital



HSSE



Engineering



Integration &  
Collaboration



Project  
Management

- Vår globale kapasitet og finansielle muskel
- Samarbeid med partnerar av komplementære styrker

**KARBONFANGST,  
TRANSPORT  
– OG LAGRING**



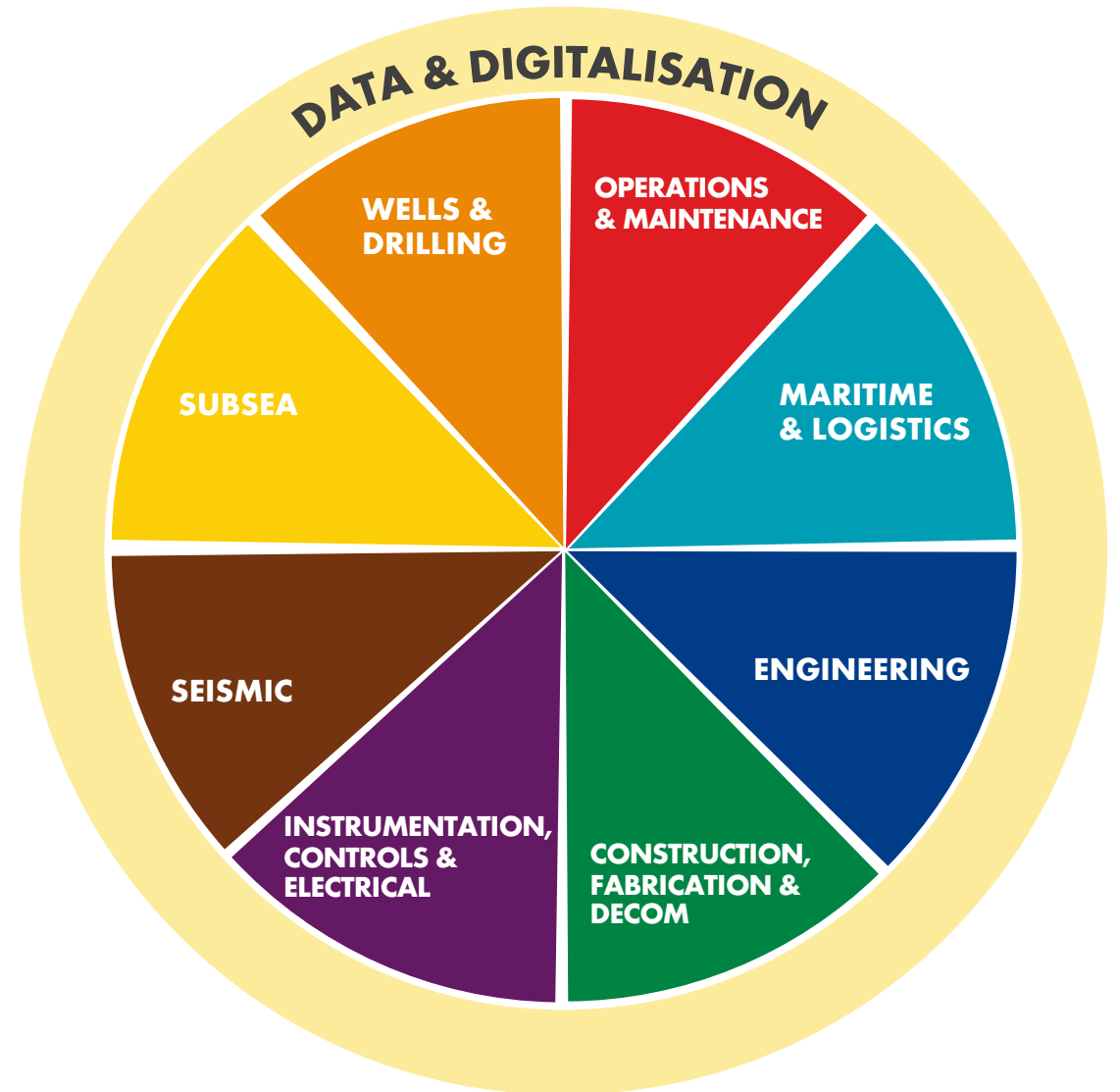
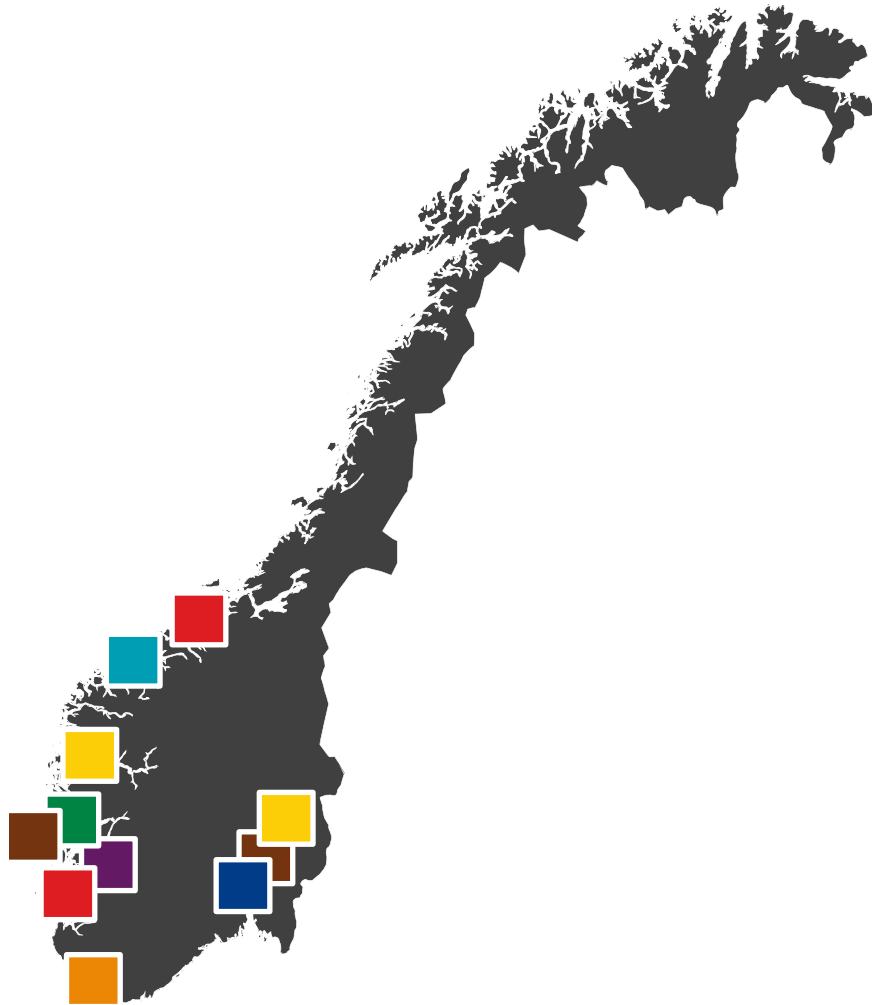
**HAVVIND**



**HYDROGEN**



# Shell bruker konkurransedyktig leverandørindustri - globalt



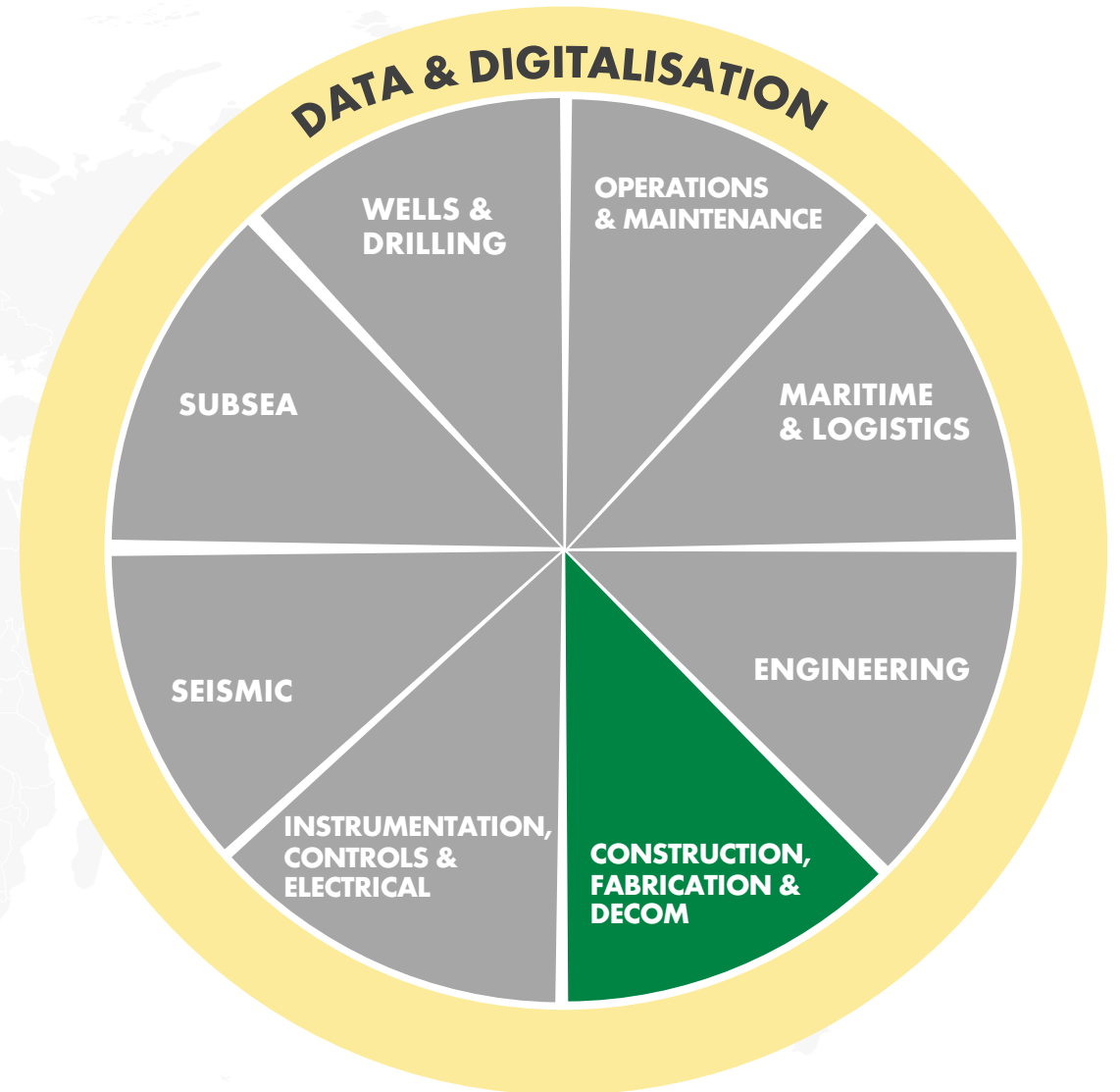
# Shell bruker konkurransedyktig leverandørindustri - globalt



**EUROPA: PENGUINS  
(NORDSJØEN, UK)**

NORSK KONTRAKTØR: **AIBEL**

- Shell si første nye opererte installasjon i Nordsjøen på 20 år
- Sevan-type FPSO med 400 000 fat lagringskapasitet
- Topside-struktur på 12 000 tonn og med eit skrog som veg 16 000 tonn. 130 meter høy
- For tida i Haugesund for endelig ferdigstilling og igangkøyring



# Shell bruker konkurransedyktig leverandørindustri - globalt

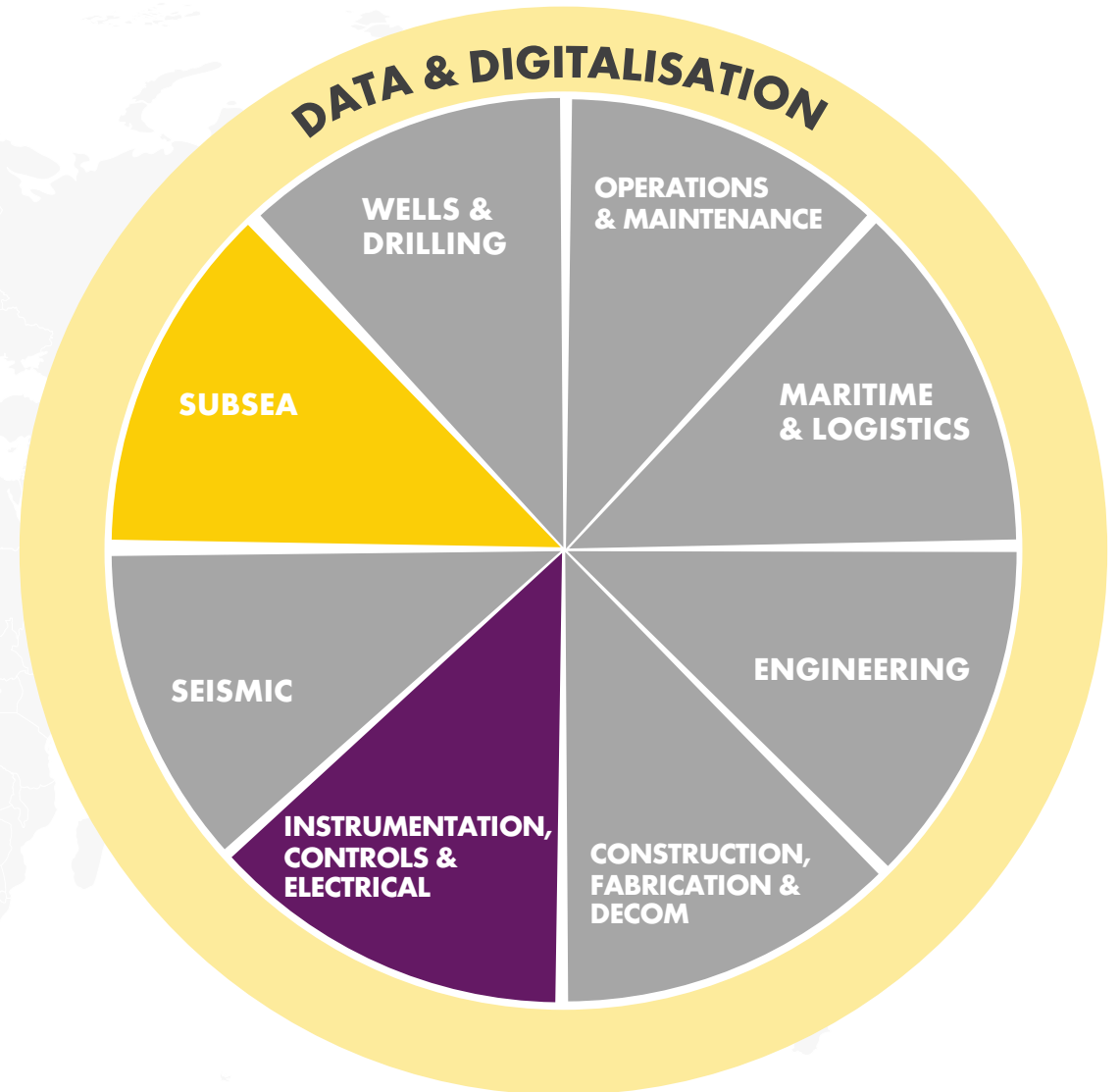


**AMERICAS: STONES/APPOMATTOX  
(MEXICOGOLFEN)**

NORSK KONTRAKTØR:

**ONESUBSEA**

- Utbygginga av Stones slo rekorden for ultra-dypvannsprosjek, lokalisert 2900 meter under havoverflata
- Appomattox starta produksjon i 2019 og utbyggingsprosjektet oppnådde ein 40% kostnadsreduksjon sidan investeringsbeslutninga i 2015
- Shell si prosjekt & teknologi-organisasjon i Norge leverte pumpesystemet for gassløft saman med OneSubsea
- OneSubsea leverte òg fleirfase-strømningsmålar, produsert på Horsøy, til Appomattox



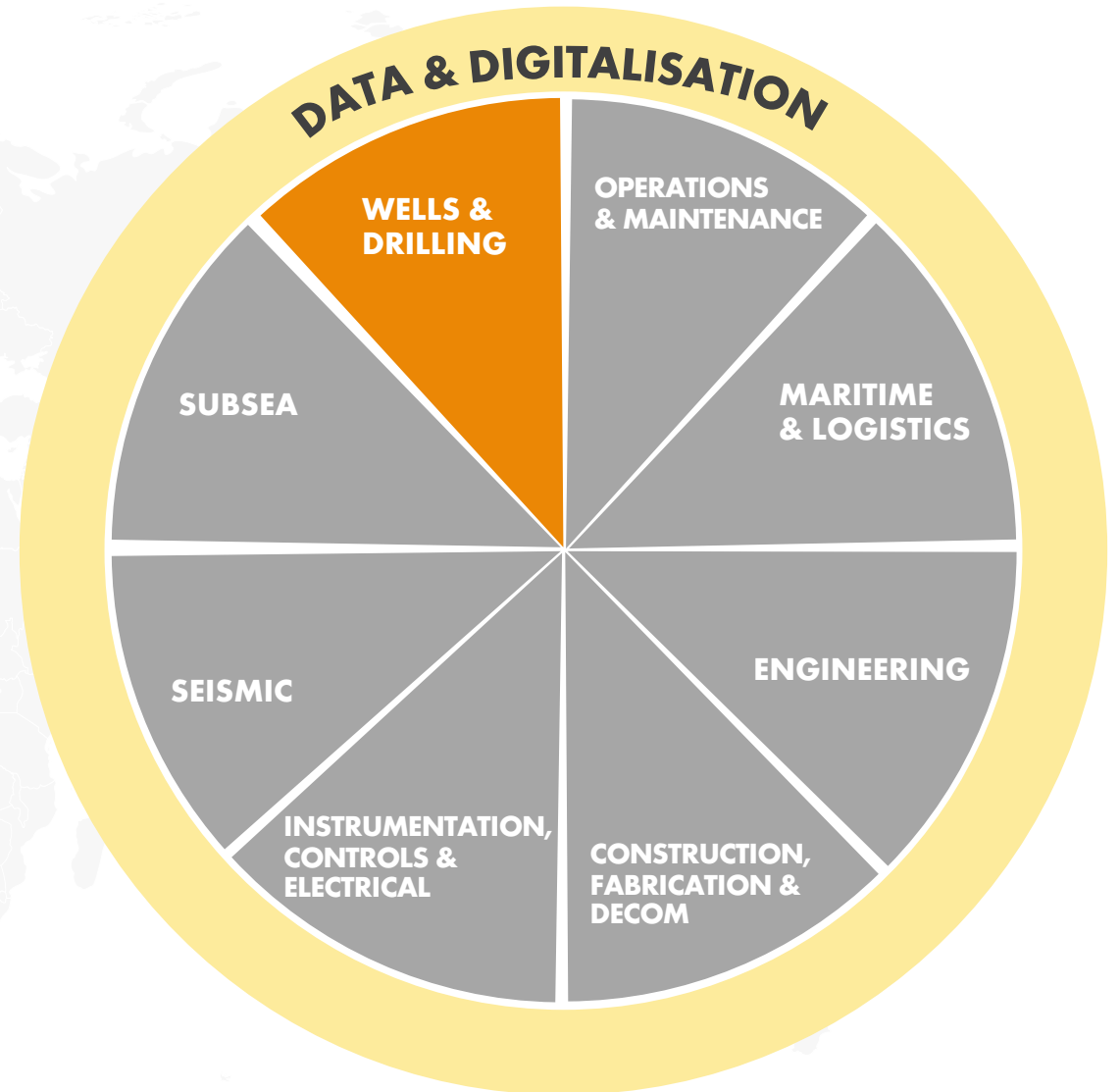
# Shell bruker konkurransedyktig leverandørindustri - globalt



**SØRØST-ASIA:  
MALIKAI (MALAYSIA)**

NORSK KONTRAKTØR: **ENHANCED DRILLING**

- Shells andre dypvannsutbygging i Malaysia og landets første strekkbeinsplattform – med eit flytende produksjonssystem forankra til havbotnen 500 meter under havet
- Enhanced Drilling leverte topphol-borekampanje for fem brønner, med bruk av sitt RMR®-system



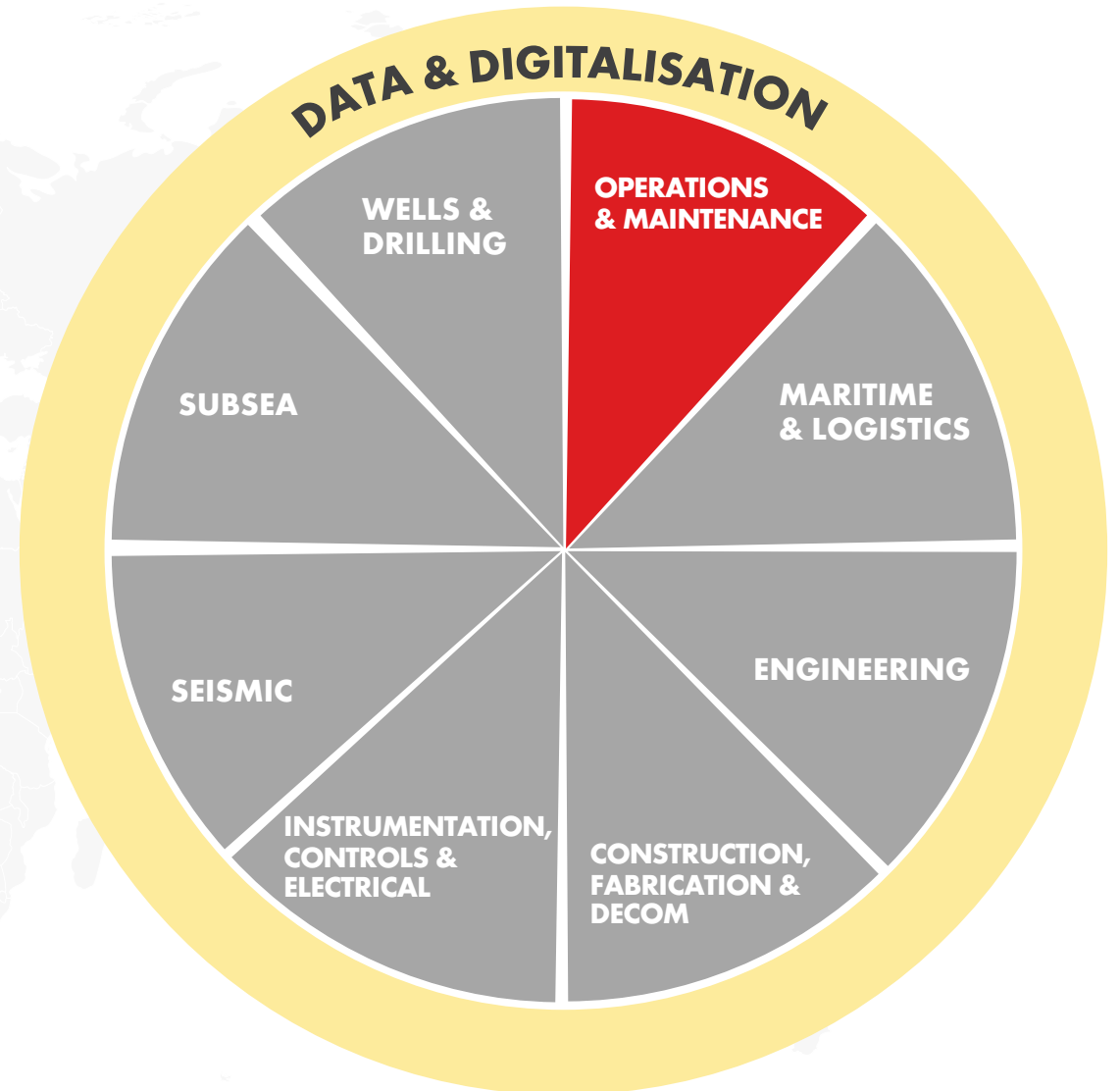
# Shell bruker konkurransedyktig leverandørindustri - globalt



**ØST-ASIA: BSP  
(SØR-KINAHAVET, BRUNEI)**

**NORSK KONTRAKTØR: | AKER SOLUTIONS**

- Brunei Shell Petroleum er den største O&G-produsenten i Brunei Darussalam, med ansvar for over 90% av landets totale produksjon
- BSP har over 200 offshore-installasjoner, integrert med over 5 000 km rørledninger, som henter olje og gass fra over 4 500 individuelle reservoarer - produsert gjennom meir enn 900 brønner
- Aker Solutions leverer vedlikehold og modifikasjonstenester til samtlige av BSP sine installasjoner i Sør-Kinahavet



# Shell brukar konkurransedyktig leverandørindustri - globalt

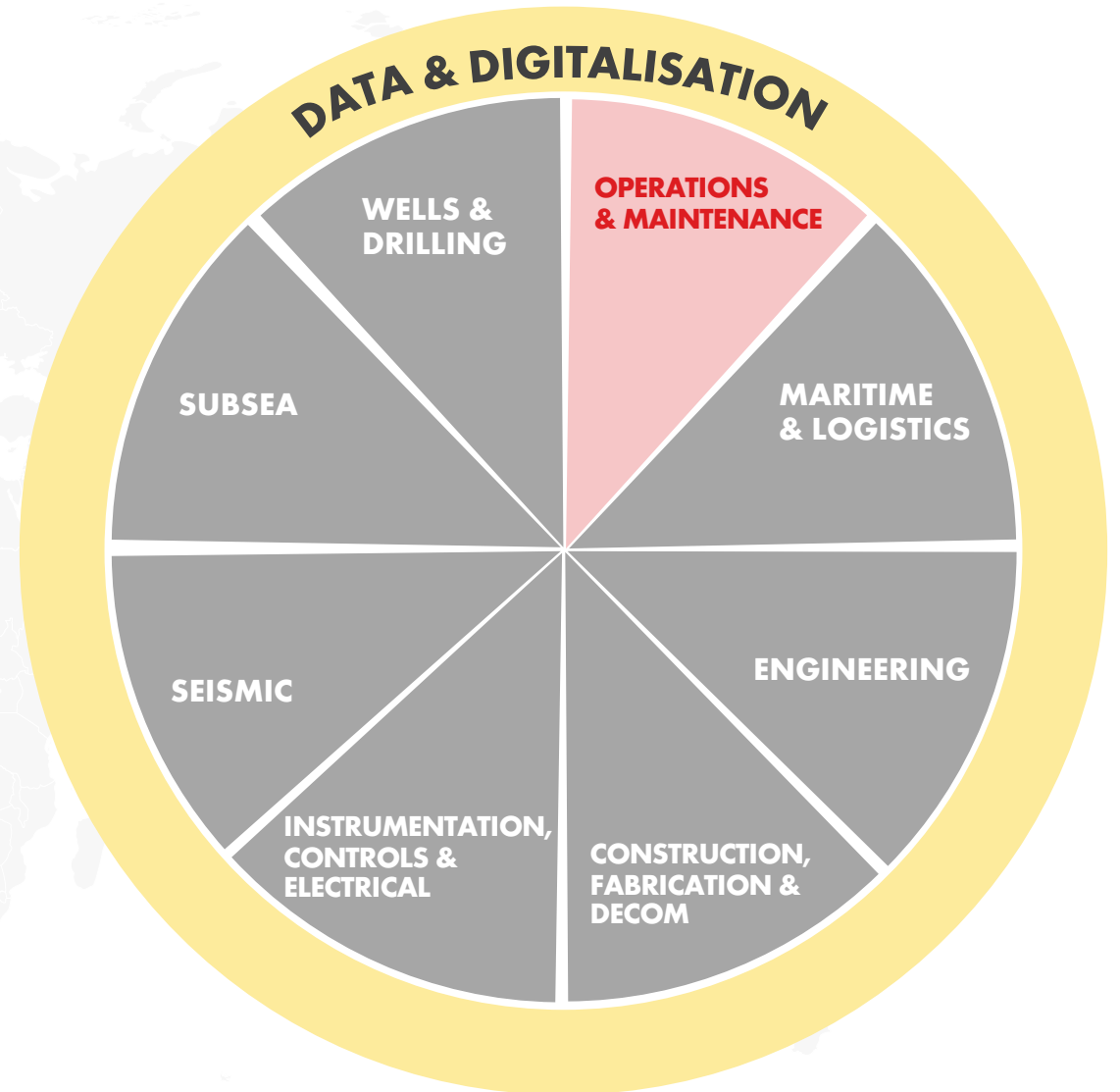


## GLOBALT: DIGITAL TVILLING

NORSK KONTRAKTØR:

**KONGSBERG  
DIGITAL**

- Kongsberg Digital og A/S Norske Shell starta eit samarbeid i 2019, for å utvikle ein dynamisk digital tvilling av Nyhamna prosessanlegg og Ormen Lange-feltet
- I 2022 fekk Kongsberg Digital tildelt ein global rammeavtale med Shell om å levere digital tvilling-teknologi til Shells anlegg og installasjoner rundt om i verda.
- I 2023 gjekk Shell inn på eigarsida av Kongsberg Digital gjennom investerings-armen Shell Ventures



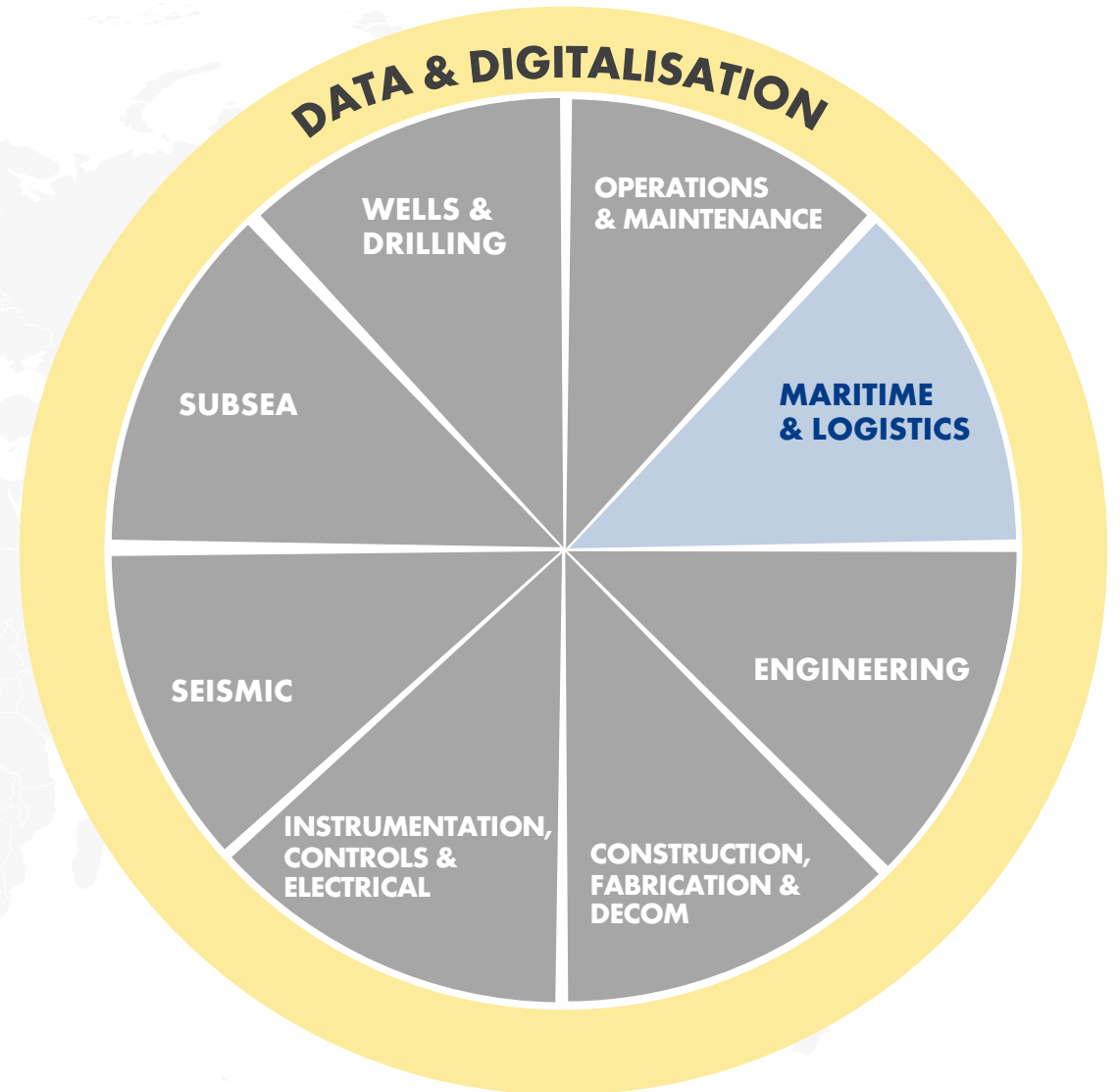
# Shell bruker konkurransedyktig leverandørindustri - globalt



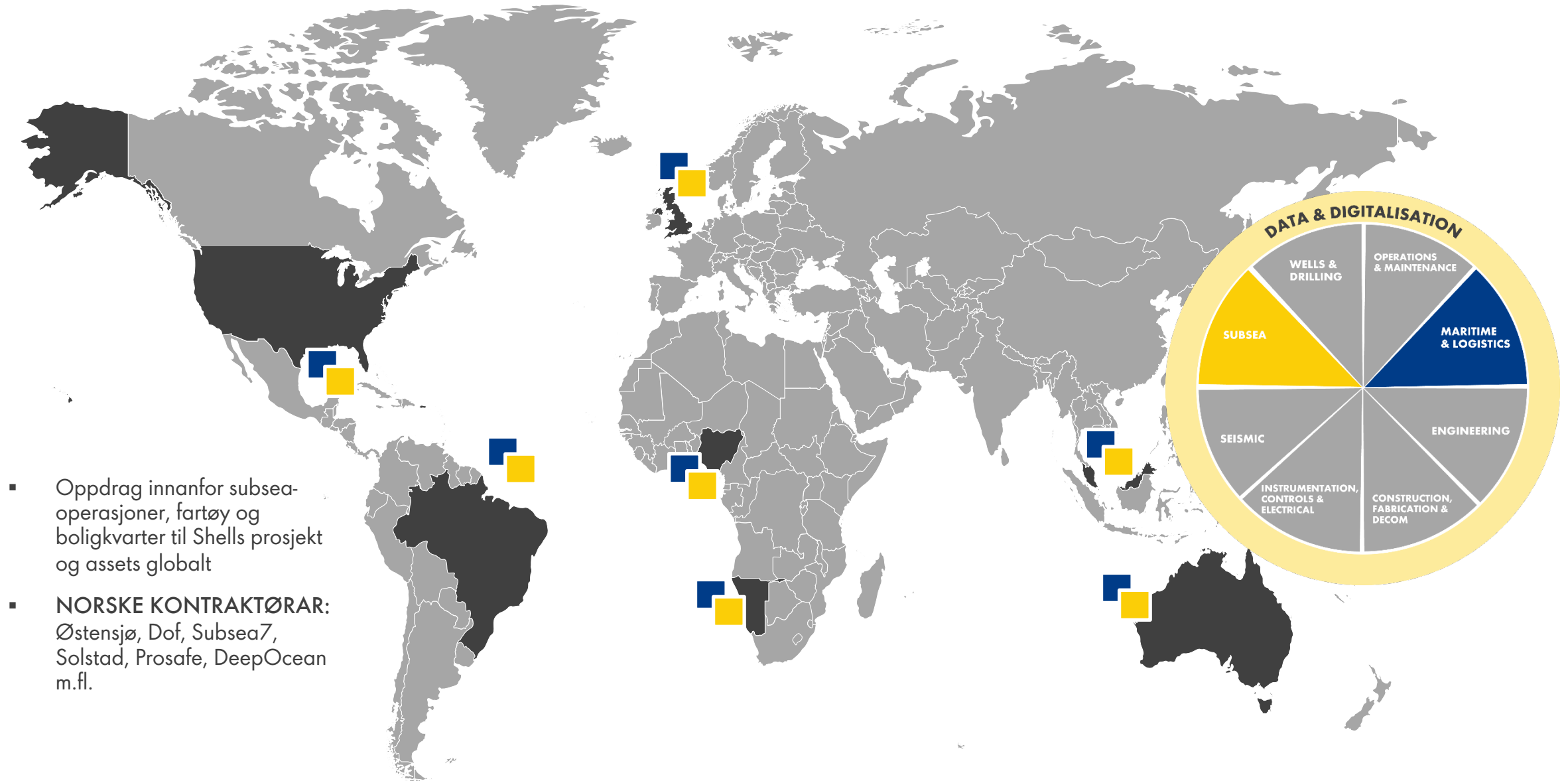
**GLOBALT: DATAPROGRAM FOR LOGISTIKKSTYRING**

NORSK KONTRAKTØR: **KABAL**

- Bygd på erfaringer fra Norge, UK og Mexicogolfen inngikk Shell en global 'SaaS'-avtale med Kabal i 2023
- Kabal sin SaaS-plattform muliggjør forenklingar og standardiseringar innanfor Shells logistikkarbeid på tvers av landegrensar



# Shell bruker konkurransedyktig leverandørindustri - globalt



# Ei stolt historie og ei lys framtid

