



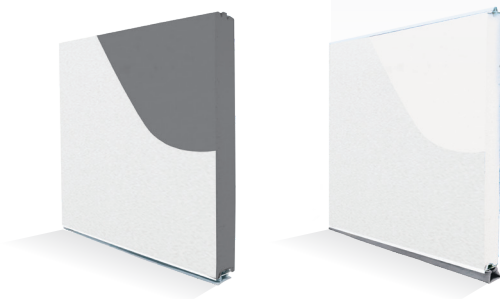
# COMMERCIAL ENERGYSAVER™



# CHOOSE YOUR OPTIONS

SPECIFICATIONS	3-Inch EnergySaver™	2-Inch EnergySaver™
<b>U-Factor</b> R-Value	<b>0.15</b> 17.05 	<b>0.22</b> 9.25 
Foam/Insulate	Extruded closed-cell polystyrene	Polystyrene
Thickness	3 inches	2 inches
Maximum Width	40 ft. 2 in.	24 ft. 2 in.
Exterior Steel	25 gauge <i>20 gauge upgrade, white only</i>	25 gauge <i>20 gauge upgrade, white only</i>
Interior Steel	25 gauge	25 gauge
Warranty* <i>Excludes Springs</i>	10 years	10 years

\*For full warranty details contact your Midland dealer



## WINDOWS



24" x 7"



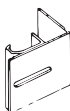
24" x 12"



32" x 14"

\*Only available in 3-inch

## TRACK MOUNTING

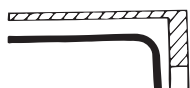


**Reverse Angle Mounted Track**  
Continuous leg-in angle to attach to steel jambs



**Angle Mounted Track**  
Continuous leg-out angle used on larger doors to attach to wood jambs

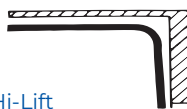
## TRACK CONFIGURATIONS



**Standard Lift**  
For normal installations



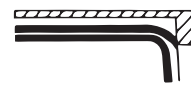
**Inclined Track**  
To follow pitch of roof



**Hi-Lift**  
To put horizontal track as close to ceiling as possible



**Vertical Lift**  
Full vertical rise where headroom is available



**Low Headroom**  
For low-clearance installations

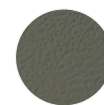
## COLORS



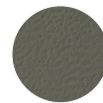
White



Sandtone



Tera-Bronze



Tera-Bronze



Coffee



Black



Color Select™

\*ColorSelect™ uses Sherwin Williams Polane® Solar Reflective Polyurethane Enamel, providing a durable, heat-repelling coating.

## GLASS



Plain



Obscure



Satin\*



Gray



Bronze



Low E



Double Dark

\*Tempered only. All other glass is available in both tempered and untempered.