

# Events and Events at Spielfeld Digital Hub

Where ideas come to play.

From a single-product  
to a multi-product  
business.

1. Payments.

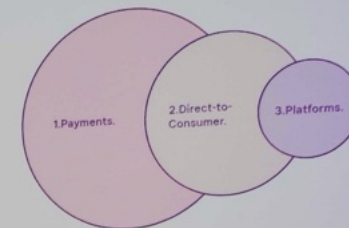
/ Klarna Checkout  
/ Pay Now, Pay Later, Slice It  
/ Tools and add-on services (Boost, In-store)  
/ Consumer post-purchase (Klarna App)

2. Direct-to-Consumer.

/ Klarna Card (Klarna App)  
/ In-app shopping browser

3. Platforms.

/ Open Banking Platform  
/ Customer Authentication



K.



# About Us

Spielfeld is a **climate neutral coworking and event space** spread out over **3000 m<sup>2</sup>** and located in the heart of Berlin. Our event venues are perfect **for conferences, presentations, workshops, streaming or networking events**. Meeting rooms are great for productive **brainstorming** or **design sprints** and include teleconferencing and video tech for online collaboration.

**Our charming red brick building is a protected historical landmark** from the year 1927 and was previously a bank and post office. The newly renovated interior integrates the building's industrial structure with sleek, creative design elements.





# Services



**Event  
Management**



**Guest Wi-Fi**



**Workshop &  
Ideation Material**



**Catering &  
Drinks**



**Hybrid & Virtual  
Event Solutions**



**Technical  
Support**



**Photo &  
Videographer**





# Hall of Fame

**Size:** 195 m<sup>2</sup>

**Floor:** Ground floor

**Equipment:**

- Projector and screen
- Professional lighting and sound
- Four handheld microphones
- Conference seating
- Workshop furniture
- Workshop materials



Wheelchair accessible

## Seating & Capacity :



U-Form  
28



Parliament  
50



Block  
20



Reception  
199



Theater  
100



Banquet  
32



New Work  
80





# Stadium

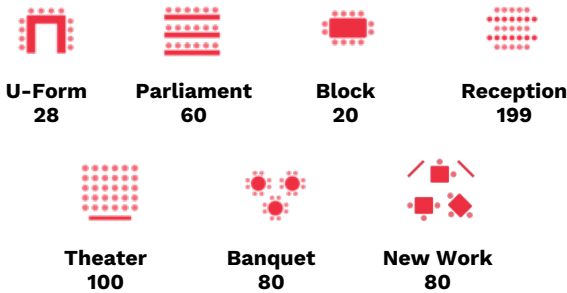
**Size:** 180 m<sup>2</sup>  
**Floor:** Ground floor

- Equipment:**
- Projector and screen
  - Professional lighting and sound
  - Two handheld microphones
  - Conference seating
  - Workshop furniture
  - Workshop materials



Wheelchair accessible

## Seating & Capacity :





# Bistro

**Size:** 112 m<sup>2</sup>  
**Floor:** Ground floor

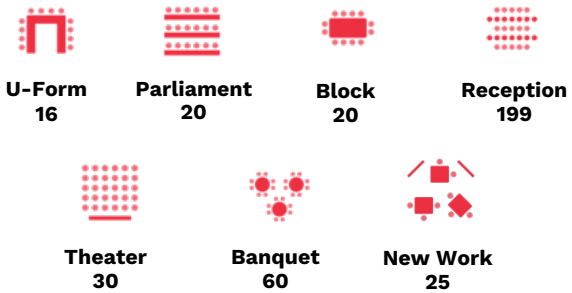
**Equipment:**

- Projector and screen
- Professional lighting and sound
- Dimmable lighting
- Bistro furniture
- Fully-equipped bar



Wheelchair accessible

## Seating & Capacity :





# Warm-Up

**Size:** 50 m<sup>2</sup>

**Floor:** Ground floor

**Equipment:**

- Large TV Screen
- Speakers
- Whiteboard
- Flip chart
- Pinboard
- Workshop furniture
- Workshop materials
- Video conferencing available upon request



Wheelchair accessible

## Seating & Capacity :



**Block**  
14



**U-Form**  
16



**Theater**  
25

Warm-Up is often booked together with Stadium and used as a breakout room, coat check or catering area.





# Baypark

**Size:** 42 m<sup>2</sup>

**Floor:** Ground floor

**Equipment:**

- Large TV Screen
- Speakers
- Whiteboard
- Flip chart
- Pinboard
- Workshop furniture\*
- Workshop materials
- Video conferencing available upon request



Wheelchair accessible

## Seating & Capacity :



**Block**  
16



**Theater**  
25

\*Additional furniture available upon request.





# Olimpico

**Size:** 40 m<sup>2</sup>  
**Floor:** Ground floor

**Equipment:**

- Projector
- Pinboard
- Whiteboard
- Workshop materials
- Lounge furniture\*



Wheelchair accessible

**Seating & Capacity :**



**Block  
20**

\*Additional furniture available upon request.





# Meeting Rooms

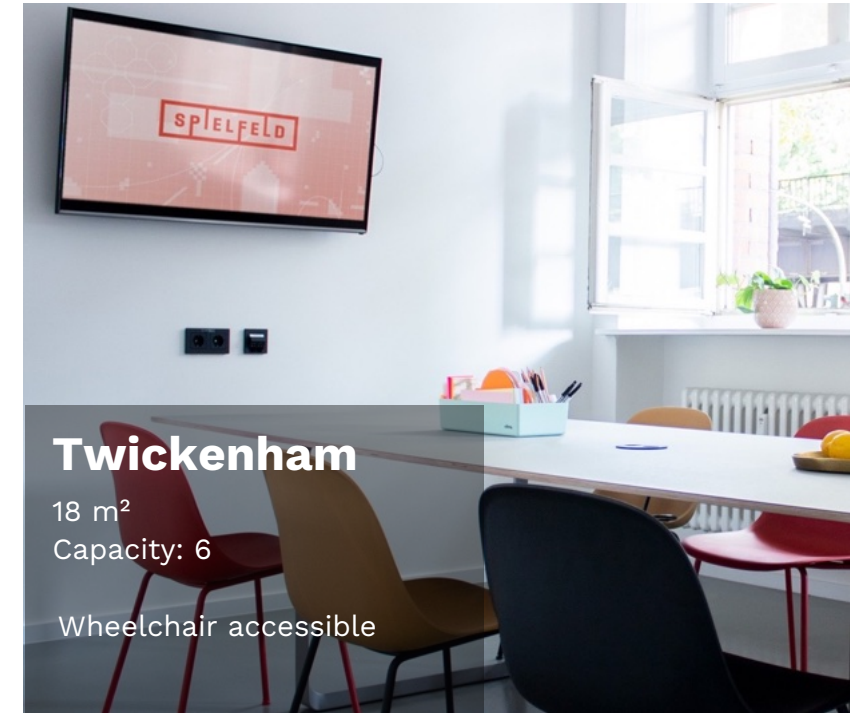
## Available Equipment:

- TV Screen
- Whiteboard
- Flip chart
- Pinboard
- Video conferencing equipment\*
- Speakers
- Workshop materials\*

## Seating:

Meeting rooms are usually equipped with a boardroom table and chairs\*.

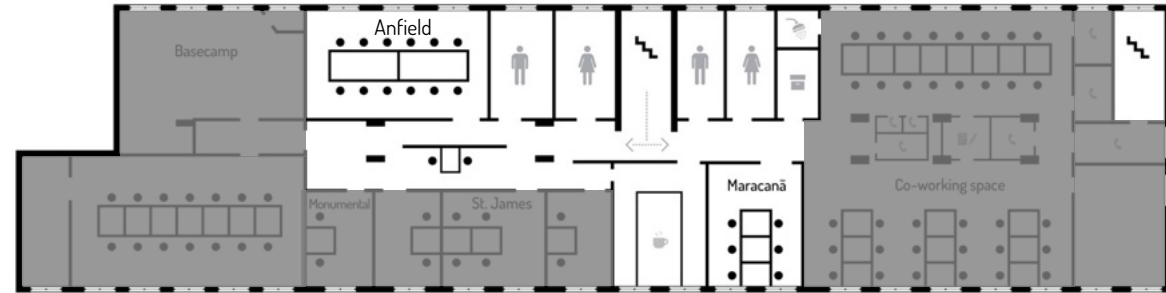
\*Video conferencing systems, additional materials and furniture available upon request.





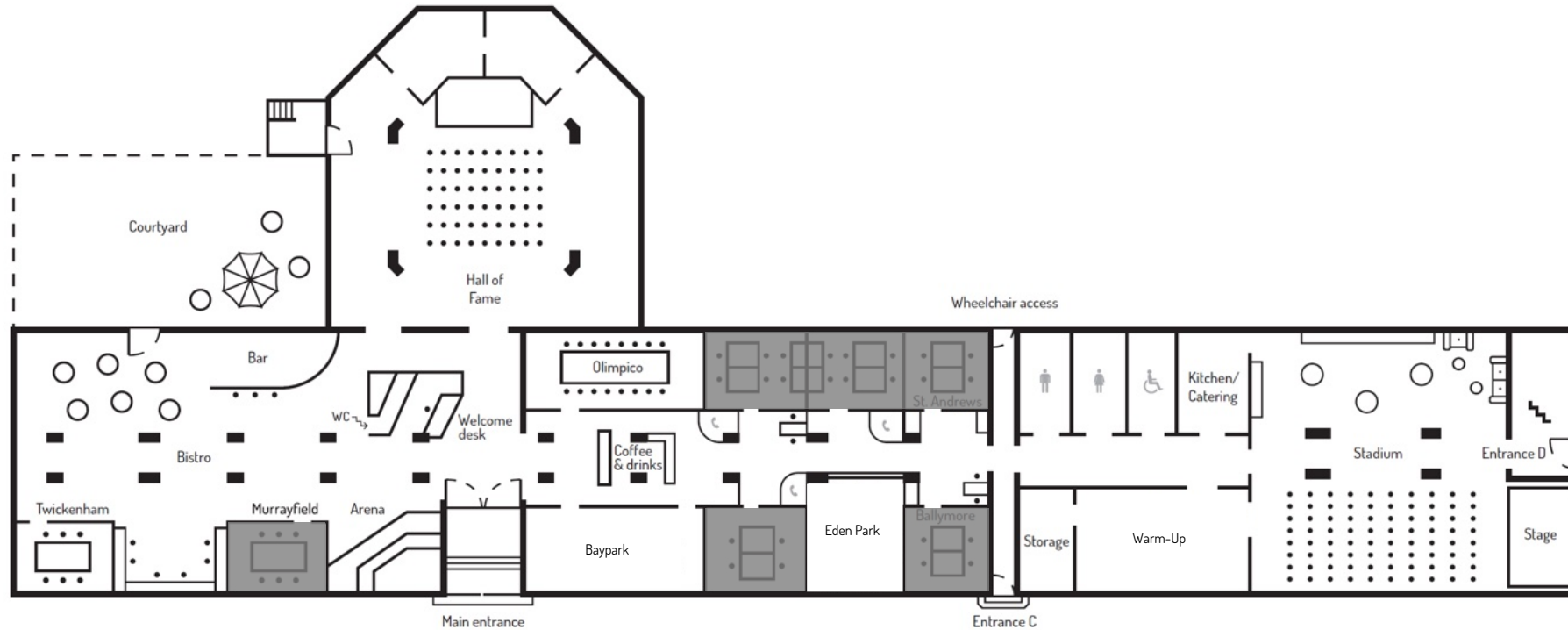
# Floor Plan

**Second Floor**



■ = Offices

**Ground Floor**





# How to find us





# Accessibility

Everyone is welcome at Spielfeld and our team is committed to making our space accessible to as many people as possible.

**Arrival:** Our main entrance is located on Skalitzer Strasse at the above address. The main entrance and welcome desk are located through the sliding glass doors at the center of the building. There are two entrances to the building with ramp access - both entrances require a key to gain access to the building. **For step-free access to our space, please call our front desk team who will happily assist:**

**+49 030 66701209**

**Our Space:** Our space includes a combination of offices, meeting rooms and event venues on four floors. Toilets are located in the underground level, ground, first and second floors. There is a wheelchair accessible toilet located on the ground floor.

**Wheelchair access** is limited to the ground floor. Unfortunately, we do not have an elevator.

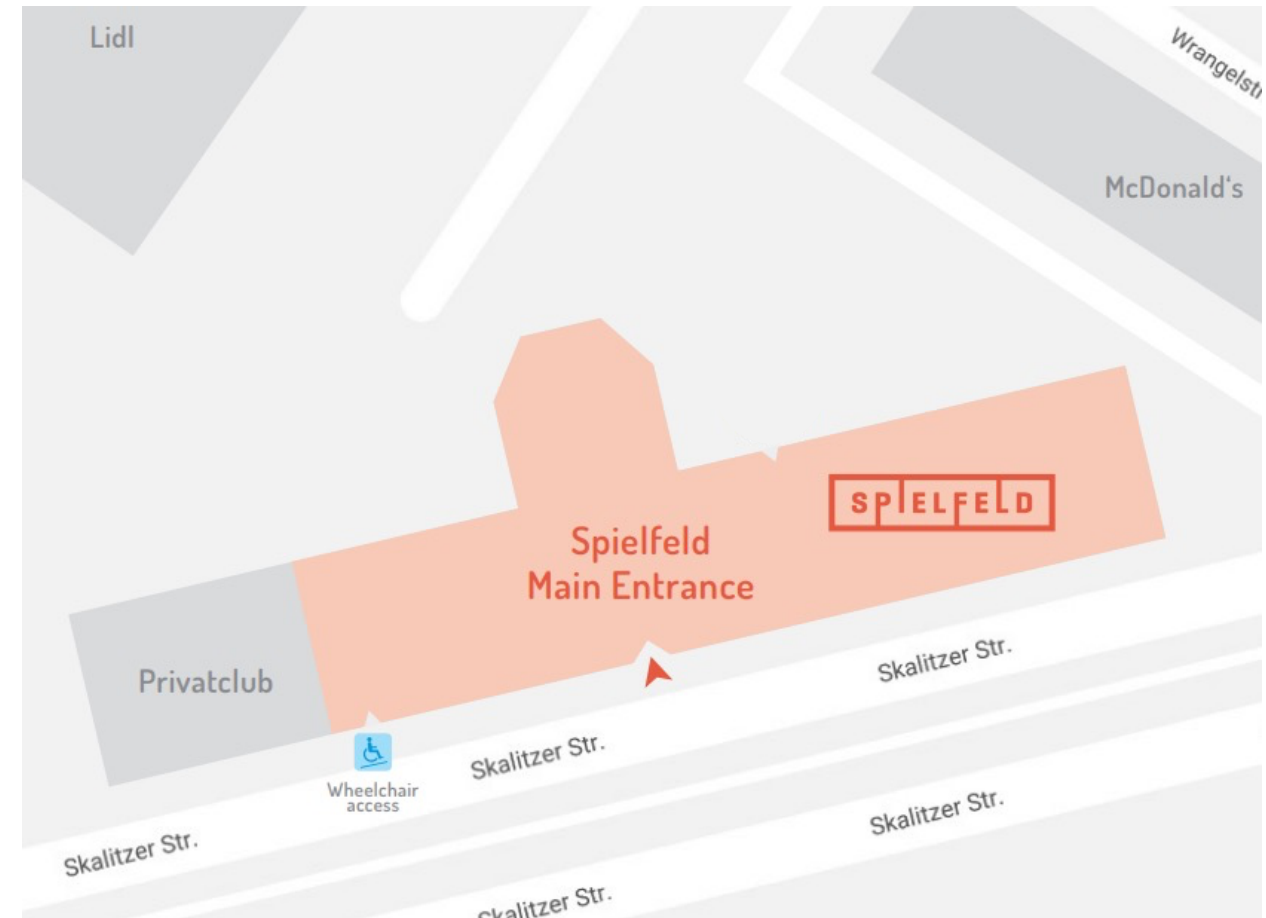
The following wheelchair accessible event venues are on the ground floor:

[Hall of Fame](#), [Bistro](#), [Stadium](#).

The following wheelchair accessible meeting rooms are on the ground floor:

[Olimpico](#), [Warm Up](#), [Twickenham](#).

**For more detailed information about how to make your event more accessible,** please [contact our event team](#).





# Our Team

**Please send event enquiries to:**

[booking@spielfeld.com](mailto:booking@spielfeld.com) oder +49 30 66701209



**Claudia Klune Pereira**

Head of Events  
[claudia@spielfeld.com](mailto:claudia@spielfeld.com)  
Tel: +49 160 7443590



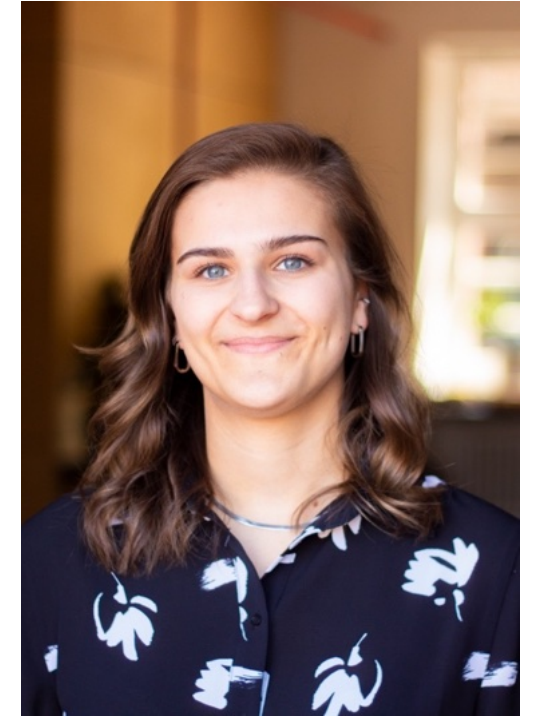
**Vinzenz Vu**

Event Manager  
[vinzenz@spielfeld.com](mailto:vinzenz@spielfeld.com)  
Tel: +49 162 7127450



**Sascha Di Carlo**

Event Manager  
[sascha@spielfeld.com](mailto:sascha@spielfeld.com)  
Tel: +49 175 5030293



**Sarah Thiel**

Event Manager  
[sarah@spielfeld.com](mailto:sarah@spielfeld.com)  
Tel: +49 162 7439378