

MOTOR CONTROL AND CONNECTION

1: Power and control cable connection

+ Control cable

Item	Function	Wire color	Note
1	Speed output	White	3 puls per revolution (*)
2	On/Off	Red	On/Off connect to 12VDC to work
3	DC 12V output	Yellow	DC 10V supplier
4	DC 12V output	Yellow	DC 10V supplier
5	DC 0-10V input	Blue	Speed control by 0-10V
6	GND	Black	GND
7	RS485 B	GREEN T/R+	When RS485 connect On/Off won't work
8	RS485 A	GRAY T/R-	

(*) Duty cycle 50%,amplitude 5V

+ Power cable

Item	Function	Wire color	Note
9	L	Brown	Single phase power
10	N	Blue	
11	PE	Yellow/Green	

+ Dip switch

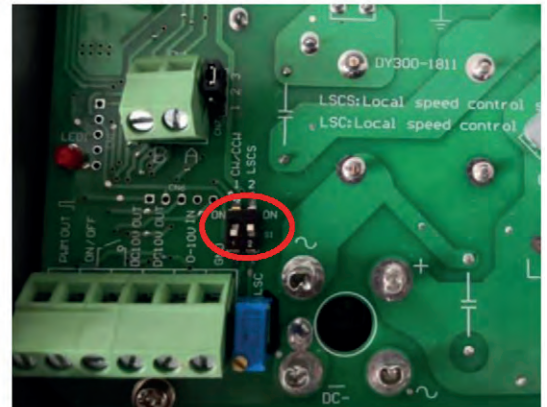
There are two dip switches in the terminal box PCB.
Please see right circle in the picture.

Switch #1 is the rotated direction switch.

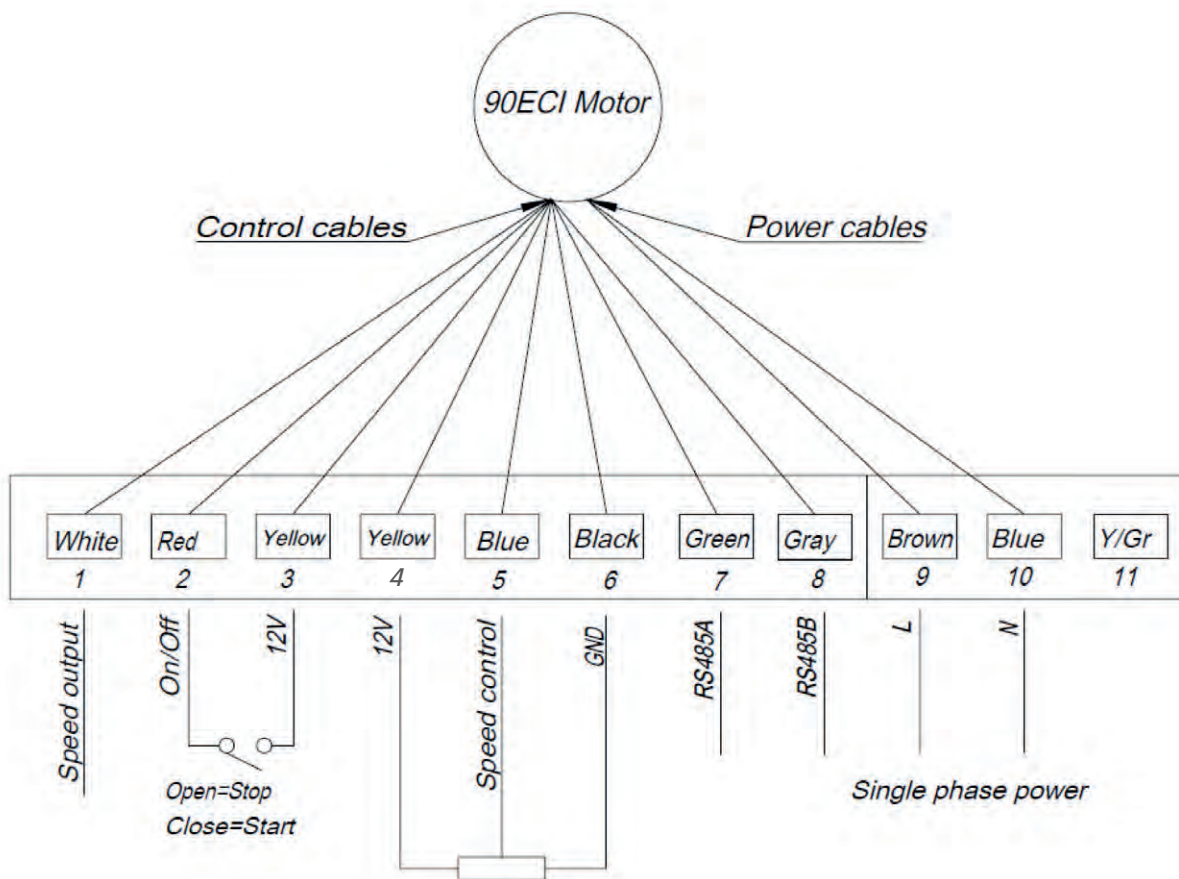
- On mean clock wise rotation.
- Off mean counter clock wise rotation.

Switch #2 mean local speed control.

- On mean speed control by outside control.
- Off mean speed control by local potentiometer in the PCB.



3: Customer side connection



pin 4 e 5 external reference 0-10Vdc

pin 11 = PE