



Woodie Wheaton Land Trust

2 Grove Road
Forest City, ME 04413
www.woodiewheaton.org

President

Jill Wheaton

Vice President

Anna Levitsky

Secretary

Jeff Ketchum

Treasurer

Shane Wheaton

Directors

Paul Benny
Dave Bianco
Daniel Daggett
Bill Hamilton
Steve Martin
Brianne O'Leary
James Plunkett
Reginald Simons
Dale Wheaton
Pete White

Office Manager

April Fowler

Advisory Board

Elbridge Cleaves
Richard Kaufmann
Sandi Mitchell
Arthur Wheaton

We're Hiring an Executive Director

*Some of the best employees
are found from referrals.*

We welcome yours!



ED Job Posting

Our search for the perfect candidate is underway. The future Executive Director will have the drive to take us to the next level. He or she will possess a positive attitude, share our pride in the history and heritage of the Trust and also be passionate about our mission and community.

If you or someone you know would like to apply, please send a resume and a cover letter to the attention of Jill Wheaton at office@woodiewheaton.org. Scan the QR code for a complete job description.



To promote conservation of the Chiputneticook Lakes

WOODIE WHEATON LAND TRUST

CONSERVATION NOTES

Issue 24, Spring 2023

INSIDE THIS ISSUE

A Natural Wonder

"In the late 1930s, a sporting community began to appear around our lakes, anglers drawn to the vibrant fisheries..."

Page 2

Matching Grant Fundraiser Results

"With your help, we have raised \$30,855 toward the match, with only \$12,145 to go!"

Page 3

A Special Little Road

"Bud Brooks once said, 'The road is a contiguous wilderness pathway to Spednic Lake.'"

Page 4

Stewardship Activities

"The Woodie Wheaton Land Trust is committed to promoting low impact recreational activities on its lands..."

Page 9

A NATURAL WONDER: ACCESS ASSURED

Our little land trust has made some remarkable acquisitions in recent months, with profound public benefits. A 203-acre property was added to our Headwaters Forest habitat, along with smaller acquisitions. But the epic accomplishment was the purchase of a parcel on Spednic Lake, finally securing permanent public access to the traditional Forest City boat landing after years of expense and frustration. No government entity was willing to invest in protecting this facility vital to local recreation and the outdoor sporting economy. But we did it!

The current Spednic boat landing has been an integral piece of the area's sporting culture since 1960 but was imperiled in 2018 when a prospective buyer forbade public use for lake access. No instrument conveying public rights to the landing or access road had ever been executed. Confident that prescriptive rights were well established, WWLT went to work to make them official. In the end, the

land trust elected to purchase the property outright.

The acquired parcel of land extends north of the landing to include a disused cottage complex once owned by Stephen Clark. The overall property is 17 acres in size with approximately 1135 feet of lake frontage, as well as interior roads and mature forest.

non-indigenous peoples.

The leather tanning industry was prospering in both Maine and New Brunswick during the nineteenth century. Tannins extracted from hemlock bark were used to tan cowhides, and the forests surrounding the upper Chiputneticook Lakes were pretty much untapped. Sole leather, due to



Perhaps the most notable feature of the property is its historic significance. It hosts the original boat landing dating to the mid-1860s, where this pristine wilderness was first penetrated for settlement by

its thickness, requires enormous volumes of the hemlock liquor to complete the tanning process. Despite the diseconomies of bringing hides here and transporting the finished leather to Boston,

A NATURAL WONDER: ACCESS ASSURED

CONTINUED FROM PAGE 1

it was still cheaper than shipping the hemlock bark out. Hence, this wooded region became a core area for producing sole leather.

In the 1860s, two brothers from St. Stephen, N.B.—Daniel and Horatio Hill—saw a unique opportunity to build a tannery at the outlet of East Grand Lake. It would afford clean water for processing, stream power, and water access to vast hemlock forests. In those days, there were no roads. Barges were the most efficient vehicle for moving bark from the forest to the tannery. The plant was up and running by 1867, with a nearby dam, sawmill, grist mill, and bridge connecting two countries.

Workers and their families, food, supplies, and hides all arrived by water from Vanceboro—a circuitous route of nearly 20 miles. Finished leather departed the same way. **Continued on page 2** And everything followed the two-mile wagon trail to Spednic Lake and utilized this little boat landing!

A village sprouted. In 1869, the tannery was purchased by F. Shaw and Bros., a large Boston concern with six other sole-leather tanneries in eastern Maine and many more in New Brunswick. The tannery soon supported 70 employees in the plant itself, with an equal number working in the woods to harvest bark—plus teamsters, liverymen, and boat operators. The cross-border village grew to include stores, schools, a church, and other civil amenities. In 1871, the European and North American Railway completed its line from Mattawamkeag to St. John, NB, via Vanceboro.

Several years later, a rough wagon trail of 9 miles was built to connect to the rail line and the outside world. Hence the name Forest City.

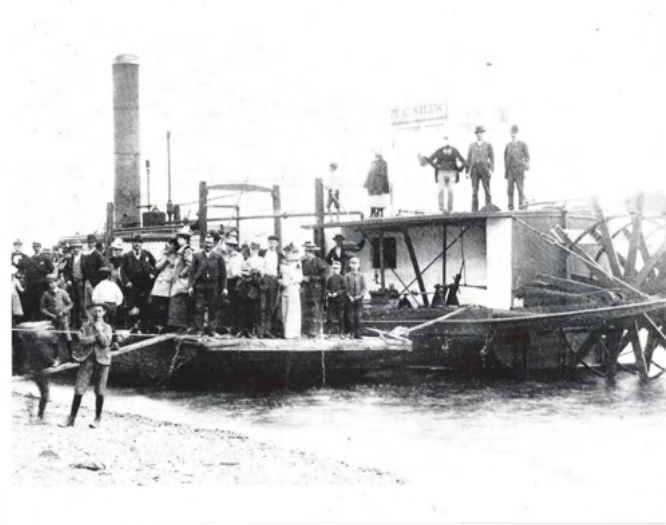
Meanwhile, the boat landing remained essential. Hides from distant places such as the western U.S. and South America continued to arrive, and leather departed by stern-wheeler. Shaw Brothers' flagship, the Alice Mae, made frequent trips to the landing with supplies and workers. Most of the early settlers of Forest City were Canadian.

The leather industry struggled in the 1880s. Shaw Bros. went into receivership, its assets eventually migrating to the International Leather Company. In 1897, the Forest

City tannery closed. And, as with other boom and bust economies, the community also collapsed. For the next three or four decades, woods work and seasonal log drives provided meager incomes.

In the late 1930s, a sporting community began to appear around our lakes, anglers drawn to the vibrant landlocked salmon and smallmouth bass fisheries. Sporting camps emerged and grew, supporting a contingent of guides and staff. There was a hiccup during World War II, but the fisheries were so exciting that an outdoor sporting economy took hold.

The 1950s brought national interest in the spectacular fishing opportunities. Mushy's Camps and several others were busy in Forest City. Wheaton's Lodge opened at ice-out in 1953, and nearby Ed and Don's Cabins, along with McCuskers, generated a thriving economy for local guides and sports. Use of the traditional boat landing at Spednic Lake



Volunteers Wanted For 2023

Since 1994 the Woodie Wheaton Land Trust has succeeded in preserving large areas of land and many miles of shoreline in the Chiputneticook Lakes region, protecting them from development while facilitating traditional use for our residents and visitors. Generous donations from supporters like you and the efforts of our dedicated staff have been critical to furthering this mission. However, a huge portion of what we have accomplished is the result of the work of volunteers contributing time, effort, and expertise to the cause. As the Land Trust continues to grow, so does the need for volunteers to help with its many projects and activities. These include assisting with:

- Trail building in the Headwaters Forest in Amity.
- Road maintenance and cleanup in the Headwaters Forest.
- Trail maintenance and clearing on the Highland trails. Bridge repair on these trails.
- Spring cleanup on trails and on the Land Trust properties, including islands in East Grand and Spednic

and Dry Ki point.

- Shade tree planting /replacement in Forest City.
- Posting information signs on Land Trust properties.
- WWLT outreach programs and events.
- Education programs.
- Administrative activities in the Land Trust office.

Our work helps preserve our natural environment, encourages the restoration of natural ecosystems, and thus helps mitigate the effects of climate change. Volunteering to assist with these efforts will be a truly gratifying experience as you contribute to preserving our region for future generations to love and enjoy. The Woodie Wheaton Land Trust extends its thanks to all of those who have volunteered to support its mission.

To sign up for an activity that feeds your passion, go to: <https://www.woodiewheaton.org/get-involved>.

Or contact **April Fowler at: (207) 448-3250** or office@woodiewheaton.org

WWLT Annual Meeting Information

The WWLT invites members and non-members to join us for our Annual Meeting and celebration of our accomplishments with a catered barbecue lunch. Members will receive a report on the state of the Trust and its achievements and will install new Board Directors. Non-members can learn about the WWLT and how they can participate in protecting our lakes and lands. More in-depth information will be provided at information stations attended by Directors from the Land, Stewardship, Membership, and Outreach committees, who can provide information, address questions, and hear what people have to say.



To celebrate our achievements with our community, we will provide a catered barbecue lunch. This will give everyone a chance to meet and socialize and get to know the Board and staff of the WWLT. The barbecue will include brisket, pulled pork, chicken, mac&cheese, coleslaw, etc. Drinks (soda, beer, wine) and pie & coffee also will be provided.

The timing of the meeting:

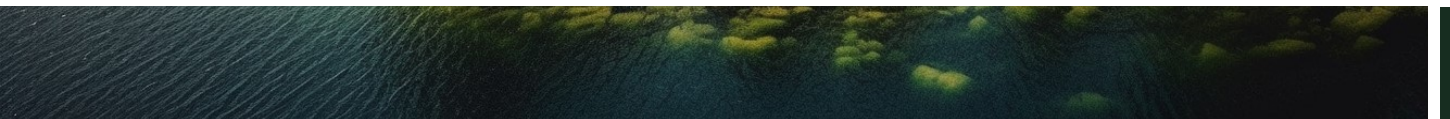
- | | |
|-------------|------------------------------|
| 12:00-12:30 | Check-in, drinks, and snacks |
| 12:30-1:00 | Business meeting |
| 1:00-4:00 | Barbecue lunch, visiting |

information stations, socializing, music

It is easy to become a member of the Trust.

Anyone can join at this event or by contacting the office. It costs a minimum of \$30/year, with larger donations of course welcomed. Any member who enrolls for yearly automatic renewal of membership will be entered into a lottery for a WWLT gift basket.

We ask that if you plan to attend for the lunch, please RSVP by Friday July 28. We need to tell the caterer how many will be there for the meal. An RSVP can be made on our Facebook page as well as by emailing or calling the WWLT.



Troubleshooting Guide:

Disconnect and Reboot

In an age when the use of artificial intelligence overwhelms you with targeted advertisements, the news cycle leapfrogs from what appears to be one crisis to another, and toxic political infighting occupies the headlines on a daily basis, the relentless bombardment can easily consume precious hours and take its toll on an individual's psychological well-being.

At times, performing the old "systems restore" by unplugging and rebooting is necessary to decompress and reprioritize the things in life that truly matter most . . . peace, health, and happiness.



There is no better time to execute those ambitions than the spring fishing season in the Chiputneticook Lakes region of Eastern Maine. Shortly after ice-out in early spring, the landlocked salmon and brook trout remain close to the surface, a great opportunity to finesse an artful landing with flyrod and streamer. Shortly thereafter, as the small mouth bass move into the shallows in late May /early June, these hard-hitting acrobats will smash your topwater presentation and take you for the thrill ride of your life. The spring fishing season is a great time of year to get



outdoors and spend a day on the peaceful waters that occupy the valleys of some of WWLT's conserved landscapes. And what better way than in the bow of a square stern canoe with one of the area's accomplished Maine Guides. This kind of experience truly defines the purpose of life. And that purpose is to LIVE IT!

The Maine guiding and sporting camp community originated a century ago to serve sportsmen and women who wanted to experience the thrill of the chase and just "get away from it all." Although the world has certainly become more complex, the area's guiding and sporting camp tradition remains unchanged, offering sports the opportunity to recalibrate the compass and enjoy the peace and tranquility of the outdoors. There are more reasons than ever to decouple from the outside world and explore the natural beauty that the WWLT board and membership work tirelessly to conserve and protect. Whether you are a returning client or someone who has yet to experience the enjoyment that comes with a day on the water with a Registered Maine Guide, the spring is a great time to disconnect from the outside world and reconnect with family and friends on the area lakes with the help of a Guide, accomplishing that much needed "factory reset".

We appreciate your continued support for WWLT and look forward to seeing you this spring!

By: Shane Wheaton



revved up as people from near and far came to go fishing.

Stephen Clark purchased the property around the boat landing and built his cottages in the early 1950s, but he became annoyed with the daily commotion. Vehicles parked in his yard, and boats pulled ashore for much of the summer. About 1959, to get rid of the people traffic, he assigned a different location on his property for a new boat landing—about a thousand feet to the south. An access road to the new landing was built to circumvent his cottage complex, and all access to the traditional site was gated or fenced. The original landing used for nearly a century was closed to the public.

So local anglers, sporting camps, guides, sports, canoe groups, etc., have used the present landing since about 1960. It has become a core part of local culture and the sporting economy, and a critical part of why folks love this area. The landing gives access to one of the most spectacular stretches of natural landscape in Maine. And you can rest assured that it is awaiting your smile.

By: Dale Wheaton



Matching Grant Fundraiser Results

Thank you to all who contributed to our campaign last fall to help us bring the matching grant pledged by the Sam Shine Foundation to fruition. The Sam Shine Foundation pledged to match up to \$43,000 to fund ongoing stewardship in the Headwaters. We are pleased to inform you that, with your help, we have raised \$30,855 toward that match, with only \$12,145 to go! The raffle we promoted last fall raised \$6,100, which is included in the total raised. As for the trails portion of the matching grant pledge, we raised \$6,742. It's a start; we have more work to do.

On behalf of the WWLT, we say thank you to our membership for your continued support of our mission.



The Beautiful and Historic Spednic Road



A Special Little Road

The two-mile dirt road from Spednic Lake to the village of Forest City has a unique history, for the original horse and buggy trail once provided the only access to the community. Raw hides, supplies, and workers came in; tanned leather went out. That was a hundred and fifty years ago.

Low, wet land near the village itself made travel sketchy. Hemlock planks were laid across some two hundred yards of muddy ground to provide footing for the horses and wagons. This section was quite familiar to local residents and was commonly referred to as "Plank Road." Many old property deeds concur.

Since World War II, the Spednic Lake landing road has primarily served the outdoor sporting community of guides, lodges, outfitters, and local anglers. Skpednic's world-class small-mouth bass fishery, plus its incredible natural beauty, have long been esteemed by folks from everywhere. Your land trust knows that.

The first major conservation success in 1993, nurtured by local guides in the area, forever protected

523 acres between Spednic and Mud Lakes all the way to Mud Lake Falls. Included in the acquisition (now owned by the State of Maine) was the corridor lying between the Spednic Lake road and the outlet stream from East Grand Lake. Guides had the foresight to also limit wood harvesting via easement (13 acres) on privately owned timberlands along the south side of the road. WWLT captured an outlying lot where the stream enters Mud Lake, plus Freda Island in the stream itself. Closer to the village, the Archaeological Conservancy acquired former tannery properties, as few such undisturbed sites exist elsewhere.

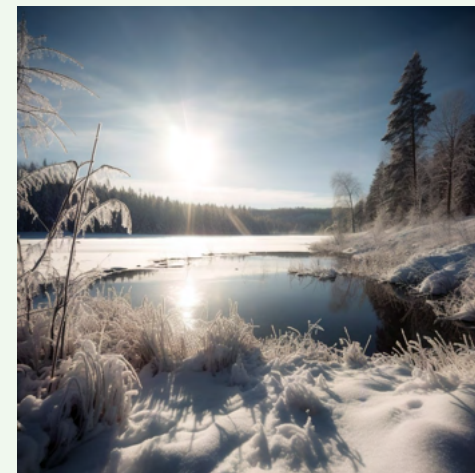
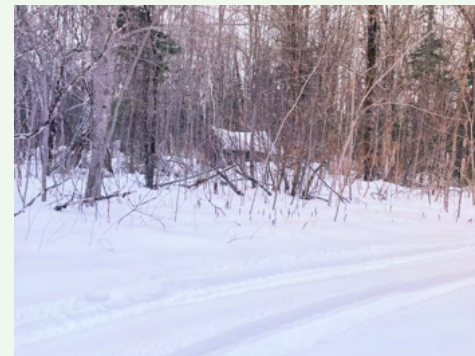
Guides and their sports step into nature when they leave the village each day. The forest is intact and intimate, and a crazy world is left behind. Bud Brooks once said, "The road is a contiguous wilderness pathway to Spednic Lake." People may hike the quiet road, visit Jake's Landing at the stream, stroll a side trail, visit tannery remains, observe "Cross Rock," rest at a picnic table beside the canal—and likely will not see a soul. Their dogs are happy to leave leashes behind. Who knows what wild animals may be encountered?

We are pleased to announce that two 1-acre lots along the Spednic Road have been recently donated to Woodie Wheaton Land Trust, to be conserved forever. A local couple, who prefer to remain anonymous, desire that the road remain part of the wild experience cherished by visitors and locals alike.

The parcels are near the village. Both are forested and have significant road frontage. A homestead once occupied one of the lots, as evidenced by a dug well and remnants of a structure. Lord knows when. The trees have returned, and will never again fear the

bulldozer!

Special places can be vast, or tiny. But wilderness values may be violated with only minor human change. We are grateful to folks who appreciate nature on its own terms, and who take measures so that future generations will have the same opportunity.



Stewardship Activities Report Spring 2023



The Stewardship Committee is currently at work on multiple projects. Two Stewardship Days have been arranged. The Sucker Lake Trail portion of the Highlands Trails in Danforth needs maintenance. On Saturday, May 6, WWLT Board members and volunteers will join to clear the trail of blowdowns, overgrowth, and debris, improving access for hikers. Dri-Ki Point on Spednic Lake, the site of an old camp, has been conserved and maintained by the Land Trust as a campsite for public use. Remnants and debris from the old camp remain on site and need to be removed. On Saturday, September 16, volunteers will travel by boat to Dri-Ki Point to collect debris for removal. A traditional guide's shore lunch will be provided for each of these events. Please join us for these fun and meaningful activities. More information is available on our website and by contacting the Trust office.



The Committee has also been working with American Forest Management Company to develop an in-depth forest management plan and forest inventory for the Headwaters Forest in Amity. This collaboration will provide a long-term plan for the forest, furthering many of our stewardship goals including trail development, road maintenance, water management, recreation activities, wildlife management, and forest improvement. We are also in the process of developing detailed maps of the Headwaters Forest for public use, promotional activity, water and land management, and for hiking trail development.



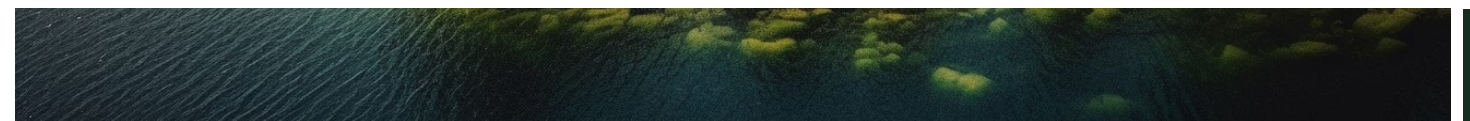
The Natural Resources Conservation Service (NRCS) is a division of the US Department of Agriculture dedicated to protecting our natural resources. Committee members and WWLT staff having been working with local NRCS staff to develop grant applications and plans for future projects. Last fall, a Headwaters Forest field visit was completed to assess for water crossing improvements, potential trout habitat surveys, upland bird habitat creation, recreation activities, and other wildlife-oriented projects. The NRCS can provide engineering support, biological surveys, funding, and additional resources to support completion of a wide range of endeavors. This partnership could potentially provide significant long-term benefits to the Trust. Grant applications have been submitted, and we are looking forward to a positive outcome and continued collaboration with the NRCS.



The Woodie Wheaton Land Trust is committed to promoting low impact recreational activities on its lands. Committee members, with support from generous donors, have been working on a variety of trail planning and funding initiatives. We have engaged in conversation with staff from the Bureau of Parks and Lands (BPL) to build a joint trail system that connects future WWLT trails with those developed by BPL on their adjoining property. Also, the committee is in the early stages of working with local landowners and professionals to develop new hiking trails to local mountain top overlooks and other landmarks. Although on private property, these new locations will be accessible to the public, providing additional benefit to the area.



Committee members are actively pursuing several other initiatives including research into the use of carbon credits, cooperation with area civic groups to promote stewardship activities, and early planning for the recently acquired property on Spednic Lake that includes the Forest City landing and adjacent cottages. The Stewardship Committee is diligently working to bring these projects to fruition for the benefit of our community.



Give the gift of WWLT Merchandise!

New Arrivals



Lake T-Shirts

- Available in short sleeve and long sleeve
- Colors are maroon, grey, and navy
- Sizes Small-2XL
- Logo on left chest and East Grand Lake outline on the back
- Short Sleeve \$25
- Long Sleeve \$30

Hoodies

- Colors are maroon, grey, and navy
- Sizes Medium-2XL
- Logo on left chest
- Drawstring hood
- \$42



Fleece Jackets

- Women's come in maroon and navy
- Sizes Med-XL
- Men's come in navy and grey
- Sizes Med-2XL
- Logo embroidered on the left chest
- Full Zip
- \$55



- Hats: \$22 [Navy and Olive]
- Boot Totes: \$23 [Royal and Gray]
- Camper Mugs \$15 [Red, Green, Blue]



Call the office hotline to place an order today: (207)448-3250

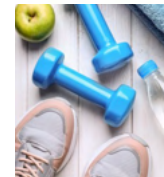
Woodie Wheaton Land Trust

2023 Outreach Calendar of Events



STEWARDSHIP DAY—SUCKER LAKE TRAIL CLEANUP Sat. May 6th, 9:00 am (Rain Date May 7th)

Volunteers will meet at the Highlands Trails parking lot and proceed to the Sucker Lake Trail where we will clear the trail of debris, blowdowns, and overgrowth. We recommend that participants bring work gloves and wear sturdy boots. Tools will be provided. Participants will get to enjoy a traditional, always delicious, guide-prepared shore lunch. If you plan to attend please let us know so we can prepare adequate food and supplies. Please RSVP by Monday, May 1.



GET MOVING - EXERCISE CLASS Mondays & Thursdays, 9:00 am - 10:15 am @ WWLT Center

Join our gentle exercise program that promotes strength, well-being, and a happy outlook. Classes take place every **Monday** and **Thursday** at the WWLT Center and are taught by Jana Wheaton. Be sure to bring a yoga mat, light weights (1-5 lbs), and a bottle of water. Attendance is free and open to all! Classes will begin on **Monday, May 22nd, at 9:00 am.**



ATV SAFETY COURSE Sat. May 20th, 9:00 am - 3:00 pm @ WWLT Center

Riding an ATV is an exciting way to explore the beautiful State of Maine. Enroll in our ATV Safety Course led by the Maine Department of IF&W to learn how to operate and maintain an ATV for safe exploring. This six-hour course is open to those ten years of age & older. Children under 16 years of age must be accompanied by an adult. Please bring a bag lunch. The course fee is \$10 and pre-registration is required as space is limited. Please visit www.maine.gov/ifw and select Education Programs to register.



PALEOQUACK "ARCHAEOLOGY" Sat. July 17th, 6:00 pm - 8:00 pm @ WWLT Center

Hold and examine stone tools and projectile points crafted by people, in many instances, thousands of years ago. The artifacts are primarily from the New England area, and many are marvels to see, always evoking comments and questions. We will engage in a dialogue about the tools, the people of ancient times, and how they may have lived. RSVP by Tuesday, June 13. Your \$10 donation will support the work of the Trust.



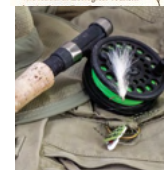
MAINE MUSHROOM TALK & WALK Sat. June 24th, 1:00 pm @ First Settlers Lodge

Join mycologist, Esther Tozier, as she shares her knowledge of edible, toxic, and medicinal mushrooms and the proper means of identification. The talk will be followed by a walk on the trails behind the Lodge to gather several species for discussion. Bring a basket for gathering, a small sharp knife, sturdy shoes, notepad and pencil. Rain or shine. RSVP by Wednesday, June 21st. Your \$10 donation will support the work of the Trust. First Settlers Lodge will be offering Mushroom specials on Saturday June 24th. Please call by Wednesday June 21st to reserve a table and mention the special menu! (207) 448-3000.



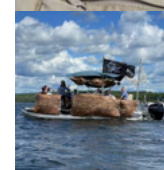
BIRDING TOUR Sun. July 2nd, 9:00 am @ WWLT Center

Join the President of Down East Nature Tours, **Michael Good**, for a power point presentation at the WWLT Center, followed by a birding tour. Michael has been guiding professionally for many years through his company Down East Nature Tours focusing on avian ecology in the Gulf of Maine bioregion. Fields of expertise include wetland ecology, ornithology, environmental education and developmental biology. RSVP by Wednesday, June 27th. Your \$20 donation will support the work of the Trust.



FLY CASTING COURSE Sat. July 22nd, 1:00 pm @ WWLT Center

Want to improve your fly casting skills? Or, learn how to fly cast altogether? If so, join us for our second fly casting class led by local Maine guides. Learn the basics of fly casting in a fun and relaxed atmosphere. All fly-casting equipment will be provided. The course fee is \$20, and pre-registration is required as space is limited. Please contact WWLT to pre-register by Wednesday, July 20rd.



WWLT ANNUAL BOAT PARADE Sat. July 29th, 11:00 am. Gather at Forest City Public Landing

Decorate your boat and join the lineup, or find a great spot to watch it all from the shore. Boats will gather in the water, in front of the Forest City Public Landing. The parade route will go down the arm to Treasure Island and then back up the arm following the shoreline off Sandy Beach Road and end at the Greenland Cove Road Public Landing. **Contact WWLT for information.**



WWLT ANNUAL MEETING Sun. August 6th, Noon @ WWLT Center

Join us for a catered BBQ lunch while we celebrate our accomplishments and conclude this years business. Visit with WWLT directors and staff and learn how you can participate in, and support us in protecting the lakes and land YOU love. See newsletter for details.

Please RSVP by Friday, July 28th.



STEWARDSHIP DAY, DRI-KI POINT CLEANUP Sat. September 16th, 9:00 am (Rain Date Sept. 17th)

Volunteers will travel to Dri Ki Point by boat. Participants should bring work gloves and wear sturdy boots. A traditional, guide-prepared shore lunch is planned. If you plan to attend please let us know so we can prepare adequate transportation and food.

Please RSVP by September 12th.

All times listed are Daylight Saving Time (DST). Please note that Canadian (Atlantic) Time is an hour ahead of DST. All events are subject to current State of Maine and CDC guidelines for community gatherings. Please check our website and follow us on Facebook for updates on our summer events.

Please contact WWLT to register for events. For more information, please visit www.woodiewheaton.org

2 Grove Road, Forest City, ME 04413 · (207) 448-3250 · office@woodiewheaton.org

Preserving Today for Tomorrow ~ With sincere appreciation to our 2022 donors

Mr. Leonard Ackerman
Mr. & Mrs. David & Sandra Adams
Ms. Julie Albert
Mr. Larry Amberger
Mr. & Mrs. Joseph & Caroline Amsden
In honor of Lance Wheaton, Arthur Wheaton, and Dale Wheaton
Mr. Christopher Anderson
Ms. Susan Balogh
Mr. & Mrs. Steven & Kathie Balser
Mr. & Mrs. William & Christy Belvin
Ms. Linda Bennett
Mr. & Mrs. Paul & Leslie Benny
Mr. & Mrs. David & Liz Bianco
Ms. Sharon Bodine
In memory of "Moose" Bodine
Mr. Jerry Bonnell
In memory of Sheila Bonnell
Mr. Martin Brody
Mr. Andrew Brooks
Mr. Gareth Bryan
Mr. James Bucher
In memory of Ann and Bob Bucher
Mr. Christopher Cafferata
Mr. & Mrs. James & Jamie Cannon
Mr. William Cannon
Mr. & Mrs. Patrick & Sandy Cassier
Mr. Paul & Johann Chase
Mr. & Mrs. David & Tiffany Chase
Mr. Christian Connelly
Mr. & Mrs. Barry & Phyllis Connelly
Mr. David Cottle
Mr. & Mrs. Tim & Jane Crocker
Mr. & Mrs. Hartley & Janet Crowe
Mr. Daniel Daggett
Mr. & Mrs. Stuart & Julie Davis
In honor of the Third Generation of Fishing Trips
Mrs. Carole Desjardins
In memory of Bernard and Debra Hannigan
Mr. & Mrs. Todd & Cynthia Doolan
Mr. Darold Dunham
Mr. & Mrs. Paul & Ginger Dunham
Mr. & Mrs. Lawrence & Carolyn Dunham
Mr. Don Early
Mr. & Mrs. Bennett & Emily Epstein

In loving memory of Burt Gwartzman
Mr. Isaac Espy
Mr. & Mrs. James & Virginia Filkins
Ms. Kathleen Finneran
In honor of Mr. Paul First
Mr. Paul First
Mr. Karl Fischer
In honor of Dale Wheaton
Mr. & Mrs. David & Marcia Fletcher
Mr. & Mrs. John & Deborah Foster
Mr. & Mrs. Mark & April Fowler
Mr. & Mrs. Gordon & Traci Gallant
Mr. Robert Gizinski
In memory of Tom Shearman
Mr. & Mrs. Donald & Gloria Glickman
In memory of Burt Gwartzman
Ms. Susan Graham-Rent
In honor of John Male
Mr. & Mrs. Rich & Roxey Greim
Ms. Maura Griffin
Mrs. Sarina Gwartzman
In memory of Burt Gwartzman
Mr. Russell Heinselman
Ms. Malinda Heisey
Mr. & Mrs. Ned & Karen Hill
Mr. & Mrs. Tony & Trudy Hodgdon
In memory of Bill and Maxine Blanchard
Mr. Joshua B. Jackson
In memory of King Davis
Mr. C.J. Jackson
Mr. Elvin Jefferson
Mr. & Mrs. Dick & Barbara Kaufmann
Ms. Allison Keef
In memory of Ralph Keef
Mr. & Mrs. Brian & Diane Ketchum
Mr. & Mrs. Harry & Mary Korslund
In memory of David and Edna Snow
Mr. & Mrs. Lee & Wendy Kump
Ms. Anne Lachance
In memory of Paul E. Lachance
Mrs. Jane Landau
In memory of Bob Landau
Mr. Syd Lea
Mr. Michael LeFay
Ms. Breeanna Leiderman

Mr. & Mrs. Thomas & Lisa Lemay
In memory of Lionel G. Lemay
Mr. & Mrs. Josh & Anna Levitsky
Mr. & Mrs. Michael & Leah Lewis
Mr. & Mrs. Barry & Carol Liepshutz
In honor of Sandy P.
Mr. Bruce Littman
Mr. & Mrs. Weston & Donna Lord
Ms. Faye Luppi
In memory of Robert F. Abbott
Mr. & Mrs. Randall & Christen Male
Mr. & Mrs. Robert & Eileen Mann
Mr. & Mrs. Steve & Cheryl Martin
Mr. Eric Martin
Mr. & Mrs. Raymond & JoAnn Matullo
In memory of Bud Brooks
Mr. & Mrs. Robert & Juliet Mazur
In memory of Dr. & Mrs. David B. Snow
Mr. & Mrs. Kevin & Coreen McGann
In memory of Burt Gwartzman
Mr. David McGillicuddy
Mr. Richard McKinny
Mr. Sean Meehan
In honor of Dale and Jana Wheaton, and in memory of Bud Brooks
Ms. Nicole Meyer
Ms. Sandi Mitchell
Mr. Marshall Murphy
Mr. Chris Nischan
Mr. Andrew O'Brien
Mr. Charles Olson
In honor of Bob Gizinski
Mr. & Mrs. Richard & Lucy Packert
Mr. Thomas Paras
In honor of Pete Pipines, James Stoneburger, and Lance & Georgie Wheaton
Ms. Christina Perkins
Mr. & Mrs. Michael & Alison Perrella
In memory of David B. & Edna M. Snow
Mr. & Mrs. Edward & Diana Piotrowski
In memory of David Piotrowski
Ms. Debbie Pipines
Mr. & Mrs. Jamie & Marcia Plunkett
Ms. Tina Rioux
Mr. & Mrs. John & Carolyn Rosenblum

Mr. Robert Rosenman
Ms. Sarah Ross
Mr. Brian Ruth
Mr. Dominick Rutigliano
Mr. & Mrs. Bradley & Nora Safford
Mr. & Mrs. Gary & Elizabeth Schlimme
Mr. Andrew Sholl
Mr. & Mrs. David & Charlotte Simmons
Mr. & Mrs. Reggie & Joyce Simons
Mr. & Mrs. Dana & Kathleen Smith
Ms. Astrid Smith
In memory of David C. Smart
Mr. & Mrs. David & Lynette Snow
Mr. & Mrs. William & Christine Springer
In memory of Morita P. Springer and William H. Springer
Mr. George Stankevicius
Mr. Bernard Stenger
In honor of Michael Ross, Beth Stenger, Zach Ross, and Meg Cadden
Mr. & Mrs. Frederick & Anne Stocking
Mr. & Mrs. Fred & Pam Stump
Mr. & Mrs. Ted & Iva Sussman
Mr. & Mrs. Allan & Jean Swanson
Ms. Lottie Tartell
Ms. Pamela Taylor
Mr. & Mrs. John & Sandy Trainor
Mr. & Mrs. Steve & Elizabeth Wampler
Mr. & Mrs. Gavin & Shirley Watson
In honor of Lance and Georgie Wheaton
Ms. Diana Weatherby
In memory of Alice and Bev Weatherby
Mr. & Mrs. Art & Doris Wheaton
Mr. & Mrs. Dale & Jana Wheaton
Ms. Jill Wheaton
Mr. Shane Wheaton
Mr. & Mrs. Walter & Heather Zakupowsky
Mr. Thomas Zayatz



2022 Chiputneticook Circle

WWLT’s Chiputneticook Circle program recognizes the commitment of our most generous members who make gifts of \$1,000 or more during the course of a year. Chiputneticook Circle donors provide critical annual support that allows WWLT to continue to protect and preserve eastern Maine’s and western New Brunswick’s exceptional places. By contributing to WWLT as a Chiputneticook Circle member, donors show their commitment to significantly supporting WWLT now and into the future.

The Trust would like to express gratitude to the following 2021 Chiputneticook Circle members:

Mr. Leonard Ackerman
Mr. & Mrs. Larry & Janet Amberger
Mr. & Mrs. Joe & Caroline Amsden
Mr. & Mrs. Paul & Leslie Benny
Mr. James Bucher
Mr. & Mrs. David & Tiffany Chase
Mr. & Mrs. Tim & Jane Crocker
Mr. & Mrs. Bennett & Emily Epstein
Mr. Karl Fischer
Ms. Sarah T. Grout
Ms. Sarina Gwartzman
Mr. & Mrs. Ned & Karen Hill
Mr. and Mrs. Richard Kaufmann
Mr. & Mrs. Randall & Christen Male
Dr. and Mrs. Stephen Martin
Mr. & Mrs. Michael & Alison Perrella
Ms. Debbie Pipines
Mr. & Mrs. John & Carolyn Rosenblum
Mr. Dominick Rutigliano
Mr. C.J. Jackson
Mr. and Mrs. David & Lynette Snow
Mr. and Mrs. Dale & Jana Wheaton

Ms. Sarina Gwartzman – Honorary Lifetime Member
Mr. & Mrs. Sam Shine – Honorary Lifetime Member
Mr. & Mrs. David Snow Jr. – Honorary Lifetime Member