



SCISOC FIRST YEAR GUIDE 2023



Contents

| | |
|-----------------------------|----|
| President's Address | 1 |
| Starting Uni | 2 |
| Key Dates | 4 |
| Handbook Guide | 5 |
| Science Majors | 6 |
| Study Tips | 9 |
| UNSW Campus Life | 11 |
| Getting to UNSW | 12 |
| Eat and Drink on Campus | 13 |
| Study Spaces | 15 |
| Getting Involved | 17 |
| About SCISOC | 19 |
| Our Mission and Motto | 20 |
| Joining SCISOC | 21 |
| SCISOC Committee Interviews | 22 |
| Portfolio Descriptions | 27 |
| SCISOC Events | 30 |
| Other Societies | 32 |
| Supporting Students | 34 |

PRESIDENT'S ADDRESS

Sairaag Satish

Hi there, welcome to the UNSW Science Society! As the constituent society to the UNSW Science Faculty, we serve as your first point of contact for all things science related. However, our reach as a society goes far beyond that. Whether you're looking to build new connections and relationships, wanting to upskill yourself, or just trying to find a second family on campus, SCISOC has something for you! Our holistic approach to students on campus ensures you will always be able to gain something with us. For me personally, my journey with SCISOC started way back in 2021. Over the last two years I have gained invaluable skills, met some amazing people and genuinely had some of the best experiences in my life. Regardless of your background, age, degree or culture, you're always guaranteed to be welcomed and cherished here at SCISOC. With every new year is a new a chance to reinvent yourself and step outside your comfort zone, so be sure to grab onto the opportunities and experiences we as a society have to offer! Welcome to UNSW and I'll be sure to catch you at one of our many events!



Starting Uni



ENROLMENTS & TIMETABLING

It is important to register your classes each term before the following dates, your enrolment in the course will be cancelled if not done so! Remember to pay your term fees before enrolments close, as you won't be able to enrol for your classes.

- Enrolments can be accessed on the myUNSW website once you sign in.
- Go to the student profile page, and on the sidebar, there should be an option to update your enrolment.
- You can actually enrol in all your courses for the current academic year, but you won't be able to timetable your classes until the term before. This date varies between different degrees, so don't worry if your friends get to pick before you!

There are other options for timetabling your classes on unofficial UNSW timetable sites:

CROSSANGLES



When CrossAngles is able to get the information for classes from UNSW, you can enter your classes to the website and timetable them on the site. This doesn't register you for your classes, however, and you'll still have to do it on the main UNSW enrolment page, but it's a good method to get an idea for how your classes will be timetabled for the next term



TRIANGLES



While Triangles doesn't allow you to timetable your classes like CrossAngles does, it does allow you to plan your courses for the rest of your degree. It gives you information about each course, such as the prerequisites needed for each course, as well as which terms they run during, which makes the job of planning your degree much easier.



If you want to view your timetable throughout the term, an easier way to view it other than logging on to the myUNSW website is to download the Uni-Verse app, which is UNSW's official app

- View your timetable whenever and wherever, as well as view where these classes take place on a small virtual map with a location tracker
- Get notifications upcoming key dates
- View your current library standings, e.g. books you've borrowed/ requested, or outstanding fees
- You can also view upcoming events happening at UNSW

You can even transfer your timetable from myUNSW to your phone calendar, receiving notifications before your classes and exams. There are also other apps available on your phone that have similar functions. Timetree for example allows you to share your calendar with other people, a great way to work out time availability amongst your friend groups for study sessions at uni or to grab lunch and quick snacks.



Key Dates

Term 1 enrolments close 19th of February

Term 2 enrolments close 4th of June

Term 3 enrolments close 17th of September

TIP! Census dates: Up until the census date (usually a month into the term), you can drop a course without academic and financial penalties

Term 1 2023 Census date: 12th March

3rd April: Class registration opens, so you can timetable your classes for Term 2. Exam timetable released for Term 1.

21st April: Deadline to drop WITH academic penalty, resulting in a grade of AW.

28th April - 11th May: Exam period for Term 1

Term 2 2023 Census date: 25th June

17th July: Class registration opens, so you can timetable your classes for Term 3. Exam timetable released for Term 2.

4th August: Deadline to drop WITH academic penalty, resulting in a grade of AW.

21st August - 25th August: Exam period for Term 2

Term 3 2023 Census date: 8th October

17th November: Deadline to drop WITH academic penalty, resulting in a grade of AW.

24th November - 7th December: Exam period for Term 3.

Handbook Guide

Handbook vs Sample Program

The UNSW handbook is your comprehensive online guide to degree programs, specialisations and courses offered at UNSW. It is useful for figuring out your degree plan as well as a source of additional information throughout your academic year. It is important that the handbook edition you are referring to is from the year you started studying at UNSW e.g. 2023.

Here you will find your program structure, major options course requirements including core courses, electives and general education, as well as further pathways regarding honours and postgraduate.

Sample programs are available from your program page on the UNSW Handbook, also available on the Undergrad Degree Templates page. Scroll down to find your program, commencement year, as well as your chosen major. A sample program plan will appear. This will be the most useful document when commencing your academic journey, including your program structure, core courses, science electives and general education courses. This helps you to plan your entire degree, whilst avoiding rookie mistakes as a first-year.

Science Majors

Anatomy

Study of the human body from the arrangement and function of the bones, muscles and internal organs together with their blood.

Bioinformatics

The development and application of technology found in computer science and statistics to analyse the data of molecular biology

Biology

The study of life and living organisms offering expertise in the fields of botany, ecology, marine biology and zoology

Biotechnology

The use of various biological processes to make products such as chemicals, ingredients and materials to support medical and commercial spaces.

Chemistry

Chemistry is the study of matter and the chemical reactions between substances. It is also the study of matter composition, structure, and properties. Matter is essentially anything in the world that takes up space and has mass.



Earth Science

Earth Scientists study the nature and evolution of the structure of our planet, covering everything from fossils to the powerful forces that move continents.

Ecology

Ecology is the study of the relationships between living organisms. Focusing on understanding the vital link between plants and animals and the world around them

Food Science

Food Science involves understanding of fundamental sciences and the application of this knowledge from paddock to plate. The study of production, handling, processing, preservation, distribution and marketing, through to consumption and utilisation.

Genetics

Study of the variation between living things and how it is inherited, also including studies of gene regulation and evolution

Geography

The study of solid earth, which can range from rock formation and fossils to earthquake and tectonic plate behaviour.

Immunology

The study of the immune system in both healthy and diseased states. It includes studying how the body fights infection from bacteria and viruses and the development of medical interventions to treat and prevent such diseases.

Marine and Coastal Science

Marine and Coastal Science looks at all aspects of the marine environment. Look at life on the shore and in the oceans and estuaries, and study the structure and topography of the ocean



Materials Science

The design and discovery of new materials combining chemistry physics, biology with mathematics and the principles of engineering.

Mathematics For Education

Draws from all fields of mathematical study to provide an extensive foundation of mathematics applications and how these were developed as well as how to model and understand data.

Microbiology

Specific study of the smallest forms of life namely bacteria, viruses, archaea, fungi and protozoa.

Molecular and Cell Biology

Molecular Biology involves looking into the still unknown inner workings of cells, the building blocks of life.

Neuroscience

Introducing biological and behavioural aspects of the nervous system to see developments and structure

Pathology

Pathology is a scientific discipline which involves the study of diseases, such as infections and cancers, at the genetic, molecular, cellular, and organ levels.

Pharmacology

Pharmacology is the branch of biology is the study of drugs as any man-made, natural, or endogenous molecule which exerts a biochemical or physiological effect on cells

Physics

The study of matter, motion and its behavior through space and time, as well as the related entities of energy and force

Physical Oceanography

The study of physical conditions and processes within the oceans by collecting data such as salinity, temperature and the current speed among other things.

Physiology

Physiology is all about what makes human bodies work - how the organs function, humans grow and develop, humans sustain bodily functions and what happens to these processes during disease and aging.



Psychology

Psychology is a broad field that includes brain-behaviour relationships, the processes of perceiving, learning, memory and thinking, the assessment of abilities and attitudes, and the origins of personality


Statistics

The application of mathematical principles to the collection, analysis and presentation of mathematical data, usually related to the “real work”

Vision Science

The study of the processes underlying vision as well as the development and use of vision-related technologies.

STUDY TIPS



Though everyone studies differently and has their particular ways of working to achieve maximum productivity, here are some foolproof tips and tricks to get through your first year at UNSW!

LECTURES

This may seem like a no-brainer but attending and/or watching your lectures is the first step in maintaining good study habits for the rest of your time at UNSW! If you aren't able to, making notes off the lecture slides and watching the lectures for extra clarification or explanation is another alternative.

REVISION

Completing the end of week quizzes or any revision modules in your course if applicable are always useful! During finals prep, these can be very helpful in establishing key concepts as well as gaps in your memory or understanding for your final exams or assignments.

LABS

As a student at the Science school, you may be required to do lab work. Completing your pre-labs are your best shot at staying ahead but also working with the people around you helps consolidate this information.



UNSW CAMPUS LIFE

Getting to UNSW

Lightrail

The L2, from Circular Quay stopping at Chalmers St, Central Station, stops at Gate 9, which is near Wallace Wurth. You can so catch it towards Central Station.

Similarly, the L3 departs from Central Station, stopping at Chalmers St on Anzac Parade.



Buses

Express buses from UNSW to Central Eddy Avenue. The UNSW

Express Bus is usually the fastest way to get to uni. It will stop at both Gate 3 and Gate 8 and the morning queue is usually no longer than 10-15 minutes.



Eat and Drink On Campus

Located in the University Terraces building, lower campus near the IGA, Yallah Eat is your go-to for all your middle eastern cravings. With the option to build your own pita or bowl, you are guaranteed great food exactly the way you like it!



Yallah Eats

Stellini Pasta Bar



Located just opposite Yallah Eat, Stellini Pasta Bar serves the best pasta on campus, with 20 different pasta sauces to choose from and a variety of pasta shapes too. Get a coffee or drink from here too, and It is the perfect to-go meal that fuels your day!

Whether you are in between classes or finished a full day of lectures, tutorials and labs, The Roundhouse is the spot to grab a drink and relax over a game of pool or table tennis. Come at night to enjoy their events and parties!



The Roundhouse

Laksa Delight



In the mood for a great Laksa or stir fry? Time to line up for Laksa Delight, located in Matthews Food Court, upper campus.

Heartwarming noodle soups at variable price points, starting at less than \$10 is a delicious way to treat yourself for lunch.

Located in Matthews Food Court, upper campus, Stockmarket Kitchen is a popular place to grab a healthy meal. With DIY salads that you can build yourself and an amazing selection of soups, pastas and smoothies, Stockmarket Kitchen is doing the most to keep you revitalised.



Stockmarket Kitchen

The Classics



Find yourself around upper campus not sure what to eat? You can't go past the classics, GYG, Subway and Boost Juice for a quick takeaway drink and meal.

The Little Marionette is the place to go for all coffee connoisseurs. With a wide range of top quality coffee beans and drinks, boasting small batch single origins, and fresh filter roasts you get more than just a cup of coffee.



The Little Marionette

Coffee on Campus



You can find Plume Cafe within the UNSW Bookshop near the quad at middle campus. With a range of great tasting coffees and teas, it is the perfect place to freshen up with a warm cuppa. They also have special deals where you can get your first drink free (if you scan their QR code). Plume Cafe offers a range of artisan breads, sandwiches, baked goods, breakfast bowls and poke bowls in addition to their gourmet coffee.



Plume Cafe

Located inside of the Ainsworth Building, middle campus, Coffee on Campus is a great place to get your caffeine fix. With a wide range of seating (inside and outside), you can order a coffee to-go or to sit-in, and prop up your laptop to start a study grind. They also have an amazing range of food and pastries perfect for breakfast, lunch or even a quick snack!

Study Spaces



UNSW Main Library

Located on the upper campus, the Main Library is a classic and iconic space on campus. Don't be daunted by its eight floors! Each level has its own purpose!

Whether you are hitting the grind before exams or in need of finding a great place to study, Main Library is the spot!

Level 2

At the front of Level 2, you will find study lounges for group or individual study. At the end of Level 2, you will find a great space to conduct silent, individual study.

Level 3

Feeling tired? On Level 3 you can find sleeping pods and long couches to take those power naps. You will also find larger tables allowing for group study sessions and individual study desks with built-in desktops.

Level 5

Level 5 is a silent study area. This is the spot for when you really need to focus. With a range of individual desks and larger tables for groups, level 5 is perfect for productive study.

Level 8

Level 8 has a great mix of individual study spaces and larger tables for group study sessions. If you are looking for a balance between social studying and productivity, Level 8 is the spot for you.

Law Library



The Law Library is open for students enrolled in any degree and is located at the bottom of the Law building. You can book rooms, conduct individual study in sectioned-off cubicles, on a bench looking out tower campus or conduct group studies on their larger tables.

Science and Engineering Building

Located at the lower campus adjacent to Hilmer, the basement level of the Science and Engineering Building has a wide range of newly renovated study areas. This study spot is very conducive to productivity, is usually extremely silent and has a wide range of different desks and benches so you can study the way you want.



Business School



The Business School is located near the quad at mid-campus. It has a wide variety of study spaces and amenities including microwaves. On the bottom floor there are study booths with low-lighting. ASB is as much a social study spot as it is a productive one.

SOCIETIES

A great way to get involved in uni life would be to join a society. If you're looking for one that reflects your degree or interests, it's a great place to meet other like-minded people that share similar interests as well as make new friends!

You can get more involved in societies by applying for a position whether it be as a subcommittee member, a director or even an executive role. This is a great opportunity to develop various skills including leadership and teamwork, while also being able to embrace the team culture in the society and work towards a common objective.

Different societies may have different cultures and goals so it's up to you to find one that fits you and apply for a position there!

GETTING INVOLVED

VOLUNTEERING

UNSW along with ARC offers a variety of volunteering opportunities. Each volunteering program serves a different purpose and it's really up to you to participate in one that you're passionate about and interested in. Some programs UNSW offers include the UNSW Advantage Program, UNSW Media and Publications, Shack Tutoring and the role of an ASPIRE Ambassador. ARC also offers many other opportunities including Street Team, Wellness Warriors, and Yellow Shirts.

SPORTS

UNSW offers a range of different sports (social and competitive) that you can participate in. There are weekly social events that run each term for soccer, volleyball and many other sports where you can meet new people and have fun, while there are also more competitive events including Representative Sport you could join.

Alongside this, there are also a plentiful amount of sports clubs you can be part of, wherein these clubs typically also host their own activities each term. To see the full range of sports that UNSW offers, go to

<https://www.sport.unsw.edu.au/index.php/clubs> to find out more.

CASE COMPS

Case competitions are events where students form or are allocated into teams of typically four members within a limited period of time. Participants are given a case study which they will have to recognise major issues, and thereby generate a solution for in a slide deck. These are generally held by UNSW student societies and are a great opportunity to develop your innovative thinking and communication skills.

It's also a great means to realistically produce critical strategies in facing business case problems, emulate industry practices and apply technical knowledge. That being said, case competitions will open up a multitude of windows for networking with other students and industry professionals. Even if this is out of your comfort zone, these events normally provide workshops that aim to teach you basic skills and expectations so don't be afraid to participate in one!



ABOUT SCISOC



The UNSW Science Society is built by students for students a part of the Science Faculty. With events and workshops giving you the chance to develop socially, academically and professionally, SCISOC supports the growth of every science student and draws strength from diversity.

At SCISOC, we endeavour to cultivate tomorrow's future scientists and give every student the chance to reap the full benefits of university life. Whether it's connecting and collaborating with other societies or leading companies, the UNSW Science Society gives students the opportunity to meet and network with students outside of the lecture hall.

With our members encompassing a wide range of degrees and disciplines, including Engineering, Commerce, Law and Arts in addition to Science, SCISOC puts students first to achieve our mission.



OUR MISSION AND MOTTO

Since its inception in 2012 as the constituent society for science students, SCISOC has enriched the lives of the science community at UNSW. Running events and workshops that give students the opportunity to develop socially, professionally and academically, SCISOC facilitates the growth of each science student.

At SCISOC, we endeavor to cultivate tomorrow's future scientists and give every student the chance to reap the full benefits of university life. Whether it's connecting and collaborating with other societies or leading companies, the UNSW Science Society gives students the opportunity to meet and network with students outside of the lecture hall.

With our members encompassing a wide range of degrees and disciplines including Engineering, Commerce, Law and Arts in addition to Science, SCISOC puts students first to achieve our mission.

Joining SCISOC

First year is a great time to join a new society! It provides the opportunity to make friends, grow your skills and also give back to the community. SCISOC will provide a safe and fun space for these experiences, as we work together to make Science more prevalent in society and bring value to Science students.

By following us across our social media platforms subscribing to our newsletters, you can keep updated on how you can stay connected and involved. Specifically keep an eye out for the opening of subcommittee or director applications, which will be announced across these platforms. Portfolios include Careers, Socials, Finance, Human Resources, IT/Publications, Productions and Marketing.



SCISOC Committee

Interviews



ARC DELEGATE - RAMONA ZHENG

Coming in as an external recruit, my time in SCISOC has been filled with numerous fulfilling and unforgettable experiences. From establishing the Phil portfolio in its inaugural year - through Phil'n'Chill, to the sports tournaments and the volunteering program - to adopting a more administrative role as the Arc Delegate, it has been an extraordinary opportunity for personal/professional development and growth in an empowering and uplifting environment. With memories and friendships that I will cherish for a lifetime, SCISOC has been a chaotic, unparalleled, and incredible experience so far and I'm super excited for what's to come this year!



TREASURER - AMY LUONG

I initially joined SCISOC to connect with my Science degree and with my creativity as Marketing subcom, but found something much more special - a community of inspiring, supportive and fun-loving people, many of whom I deeply cherish as life-long friends and have made so many core memories with. Through the highs and lows of functional society work, it has been a challenging yet incredibly rewarding experience of professional and personal growth that has given me agency and taught me leadership, resilience, problem-solving and confidence. It's safe to say that SCISOC has been and continues to be a huge part of my university experience that I will always be thankful for. So if you're keen on new experiences and friendships or a place to grow, SCISOC is the place for you!



SECRETARY (HR) - IVINA LIU

For the past two years that I've been in this committee, SCISOC has given me a platform to build my confidence and leadership, a space for creativity and student-led impact, and a tight-knit team that I consider my family. Looking back on my uni experience so far, so many of my most cherished memories, funniest moments and best learning experiences have been with SCISOC. As a HR subcommittee member, director and now Secretary, I was pushed to explore outside of my comfort zone in a diverse team that supported my growth and wellbeing. I had the opportunity to head my own initiatives and in doing so gained so much in communication, management and leadership - all while having the best time alongside friends and like-minded peers.



EXTERNALS - SELENA WONG

Within the past year it's safe to say that joining SCISOC has been has been one of the most valuable experiences I've had as a university student. Through all aspects of the externals portfolio – sponsorships, education, and philanthropy - present countless opportunities to grow and develop professionally. From organising educational events, networking and liaising with sponsors I have been constantly challenged to step outside my comfort zone. But more importantly, I was able to meet a diverse range of like-minded people, many of whom which I consider my family. If you are looking for a sign to step out of your comfort zone - this is it!!



EXTERNALS - ELLIANA ZHANG

Having entered UNSW with no clue about societies and university culture. SCISOC has allowed me to open up and has helped me aim to become the best version myself. It has not only taught me how to develop my career professionally, but has also blessed me with like minded individuals who encourage me to live my best life. Although not all of our committee study science, our goals are aligned in a way such that we all want to help other students find a place of belonging. This has been proven to me constantly through the consistent work and continuous efforts that everyone puts in to ensure that it can appeal to all uni students. As cheesy as it sounds, SCISOC has helped me look at the bright side of life and live love laugh.



MARKETING - EMMA MACKINTOSH

SCISOC has been one of the most fulfilling and fun experiences that I have experienced as a University student. As a science student myself I hope to develop professional and personal connections with my science peers. SCISOC provided opportunities for members to develop professionally, network while also allowing us to create friendships. I furthermore realise how important these types of commitments are not just for my personal growth but also for the development of the students who participate in SCISOC related events and initiatives. Throughout my university experience, I have searched for a society that creates a sense of community amongst its members, and my experience within SCISOC has provided me with this.



IT/PUBLICATIONS - CHRISTIAN NGUYEN

Having spent 2 years so far in SCISOC, it has allowed me to practise working in a team environment with shared goals of bringing our ideas to life. Although there were many challenges along the journey, it provided me with great opportunities to develop myself professionally. I believe that the main idea of joining any society is to ultimately have fun, which SCISOC provides with a strong, close-knit community that embraces diversity. In my final year as the Vice President of IT and Publications, I'm grateful for the like-minded, driven individuals I've met along the way as well as all the professional skills I've been so fortunate to develop so far.



PRODUCTIONS - EDWARD NGUYEN-DO

The past 2 years in SCISOC have been an amazing experience of growth and development and I've been fortunate enough to work alongside incredible individuals and even lucky enough to call many of those my close friends. During my time in SCISOC, I have been given multiple opportunities to not only work amongst a variety of personalities in a team setting but also lead my very own team. As such, this has allowed me to develop an understanding of the dynamics of a team and the considerations of each individual. SCISOC not only represents a group of students working towards bettering the student community through social and educational initiatives but a group of like-minded individuals who not only have the desire to assist their peers around them but to make the most of their time at UNSW, whether it be socially, academically or professionally, and I believe that it is the tight-knitted bonds that are created which make SCISOC so special.



SOCIALS - TIMOTHY PHAM HO

Coming into SCISOC as an external director, I can gladly say that it was a great choice seeing how my time as director has been filled with the highest of highs and lowest of lows, which ultimately made me want to stay in society for another year. Seeing the growth the society has had over the year and much more to come, allowed me to put my best self forward to enjoy the good times and see to it that the future team can learn to have a good time as directors as I know all the new executives had as well. Being a part of the Socials 2022 team allowed me to garner many skills and qualities in a professional sense, that included empathetic communication, leadership skills and contingency planning that came about through planning social events targeted at the wider community of UNSW. Even though going into a society thinking it was all fun, I can gladly say that I've developed myself professionally, and am happy to see how I will be able to put these newly developed skills into practice in the future. But the most important thing that makes SCISOC special to me is the people that have grown on me like a parasite, but I wouldn't have it any other way. Discovering the uniqueness between people is such an enriching experience and is what makes SCISOC special to me.

PORTFOLIO DESCRIPTIONS

EXTERNALS

EDUCATION

The Education Division delivers relevant career, educational and networking opportunities. They are in charge of planning and ideating events and programs as well as educational material to best provide guidance and support to the student base.

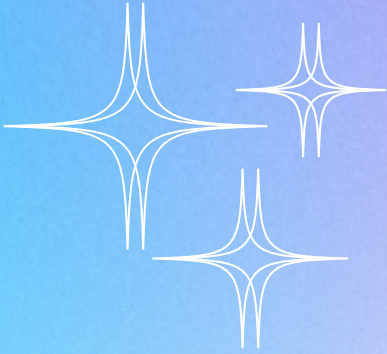

PHILANTHROPY

The Philanthropy Division delivers value to charities, not-for-profit or other social impact causes through monetary, visibility or other beneficial means. They are in charge of liaising with charities/non-for-profits to maintain a mutually beneficial relationship and expand student outreach.

SPONSORSHIPS

The Sponsorships Division educates, upskills and uplifts our students by bringing them closer to corporate sponsors, opportunities and mentors. They are in-charge of sourcing sponsorships/partnerships, maintaining professional relationships and delivering value to these external parties.

HUMAN RESOURCES



The Human Resources portfolio is in charge of organising internal bonding events and workshops.

This portfolio assists all members with development and well-being to promote good team culture, so as to ensure a healthy and functional committee.

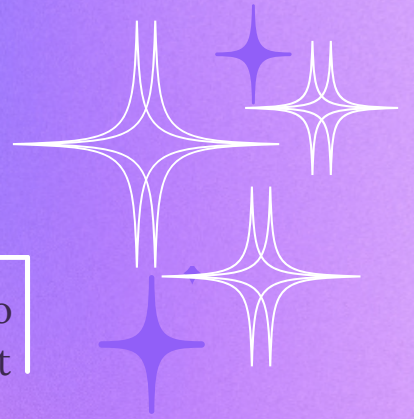
IT & PUBLICATIONS



The IT/Publications portfolio manages and designs the SCISOC website and creates fortnightly newsletters to send updates, upcoming events and more to all members of SCISOC. This portfolio team organises the mailing list to facilitate newsletters and emails. Additionally, they produce careers-related and student-catered publications for a wide range of Science students.

Check out their work on the UNSW SCISOC website!

MARKETING



The Marketing portfolio designs material and graphs to promote all society events. These materials include but are not limited to event graphics, event trailers, merchandise, event pages, cover photos, videos and marketing captions for verbal and virtual communications to promote and capture student's attention.

PRODUCTIONS



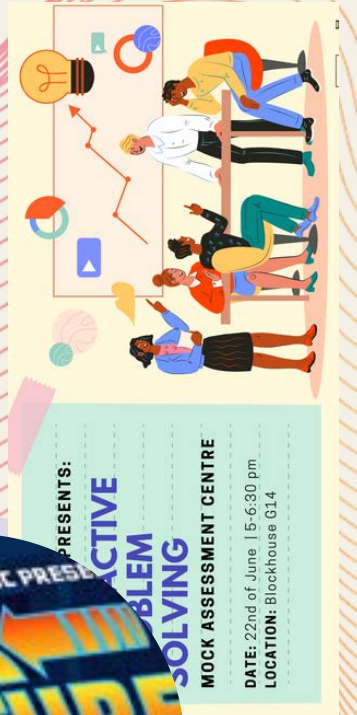
The Productions portfolio creates engaging and entertaining videographic and auditory entertainment that help represent SCISOC's interpersonal relationships in an educational, professional and social setting.

SOCIALS

The Socials portfolio aims to plan, develop and run SCISOC events within a team atmosphere by taking initiative to research, plan and book suitable venues, ensuring availability of required equipment and personnel. These events include but are not limited to: camp, cruise, ball and pub crawl.

UNSW SCISOC PRESENTS:

DUSK TILL DAWN BALI



SCISOC EVENTS 2022

Just a Few SCISOC EVENTS

BACK TO THE FUTURE CAMP

Our 3 day and 2 night Annual Orientation Camp in which over two hundred students came and participated in team bonding activities and games, guided by camp leaders and fellow SCISOC executives!

EUPHORIA CRUISE

With the view of the city skyline, SCISOC's Euphoria Cruise was a huge success which led to a night full of excitement and passion from all attendees, shimmering and sparkling in the middle of the harbour.

INTERACTIVE PROBLEM SOLVING

The mock assessment centre was an amazing opportunity to develop participants thinking and teamwork abilities. They were able to interact with leading industry professionals and representatives for the whole day!

UPSIDE DOWN UNDER PUBCRAWL

Our in-person pub crawl, together with EngSoc and CSESoc was another success, where all attendees were split into groups and visited 5 different bars with all proceeds supporting StreetSmart and children's charities!

DUSK TIL DAWN BALL

And last but not least, SCISOC ball brought the year to an end at Doltone House, Darling Harbour. This flagship event drew in over two hundred students across all disciplines and years, and allowed us to interact more with our community.

Other Science Societies

★ BioinformaticsSoc

UNSW Bioinformatics Society (BINFSOC) is a society for students interested in bioinformatics, computer science, statistics, biology, and chemistry disciplines. BINFSOC is built on the values of connecting, educating and inspiring students to discover what it means to study bioinformatics. We host a range of social and professional events, workshops, mentoring programs, and publish articles on emerging bioinformatics topics. In joining BINFSOC you'll make great friends, learn skills to excel in industry and become a future thinker and innovator in all corners of STEM.

-Jasmin Yip (BioinformaticsSoc President 2023)

★ DataSoc ★

UNSW DataSoc is the student hub for all things Data Science related! For every student interested in data, analytics, machine learning or AI, DataSoc is here to provide support in any way we can. From educational workshops to industry mentoring, networking nights to social BBQs, DataSoc's purpose is to provide a community to help enrich the university experience of students curious about data. Focusing on the social, career, educational and UNSW-specific aspects of Data Science, we embrace the diverse student body and offer events to bring together all kinds of people. We hope that you learn lots and make some great friends here - see you at our camps, amazing races or games nights!

-Kento Seki (DataSoc President 2023)

PsychSoc

The University of New South Wales Psychology Society is a student-led organisation that aims to bridge the gap between the student cohort and the School of Psychology, providing them with opportunities for social and professional engagement, along with chances to partake in philanthropic and enriching initiatives. UNSW PsychSoc aims to benefit our students both on and off-campus by fostering a safe space for people to grow socially, professionally and personally. PsychSoc's foundations stand upon seven portfolios that innovate, organise and facilitate PsychSoc's events - Academic, Social, Relations, Year Representatives, Wellbeing, Marketing and Publications. By working collaboratively as a collective and with other university societies, we ensure that all students with various interests are considered and catered for. We execute events including coding, referencing and interview workshops, volunteering, networking, case competitions, career fairs and more, which help to shape career-oriented, worldly, caring and future-thinking members.

- Matthew Wong (PsychSoc President 2023)

MathSoc

The UNSW Mathematics Society is a community for all students interested in mathematics. We hold academic, social and professional events so members can be supported on their journey through university, meet like-minded people and explore future career paths. From revision seminars and workshops to fullyworked lab solutions, our educational resources give students a greater understanding of course material. Make memories outside the classroom at our social events, where you can enjoy good times with great company. Learn about the applications of mathematics in professional settings to prepare yourself for life after graduation. Join UNSW MathSoc to make the most of your university experience!

- Daniel Kim (MathSoc President 2023)

Supporting Students ✨

Student services

The Learning and Career Hub located at the Commerce courtyard next to the Southern Wok, provides academic support to all students. They hold workshops to improve essay writing skills as well as individual consultations and online self access resources. The career hub runs regular workshops about career planning, improving resume writing and interviewing skills and provides individual career advice by appointments.

Health

- The University Health service is located on ground Floor of the east Quadrangle Building, where students can go and see a GP and receive comprehensive care.
- Located on the Ground Floor at Rupert Myers Building the UNSW optometry clinic offers free comprehensive eye checks and advice on spectacle lenses, low vision aids and occupational eye protection
- At tenancy 10, University Terraces there is a physiotherapy clinic offering the latest rehabilitation equipment for treatment of injury or post surgery along with core stability and back care classes throughout the term.

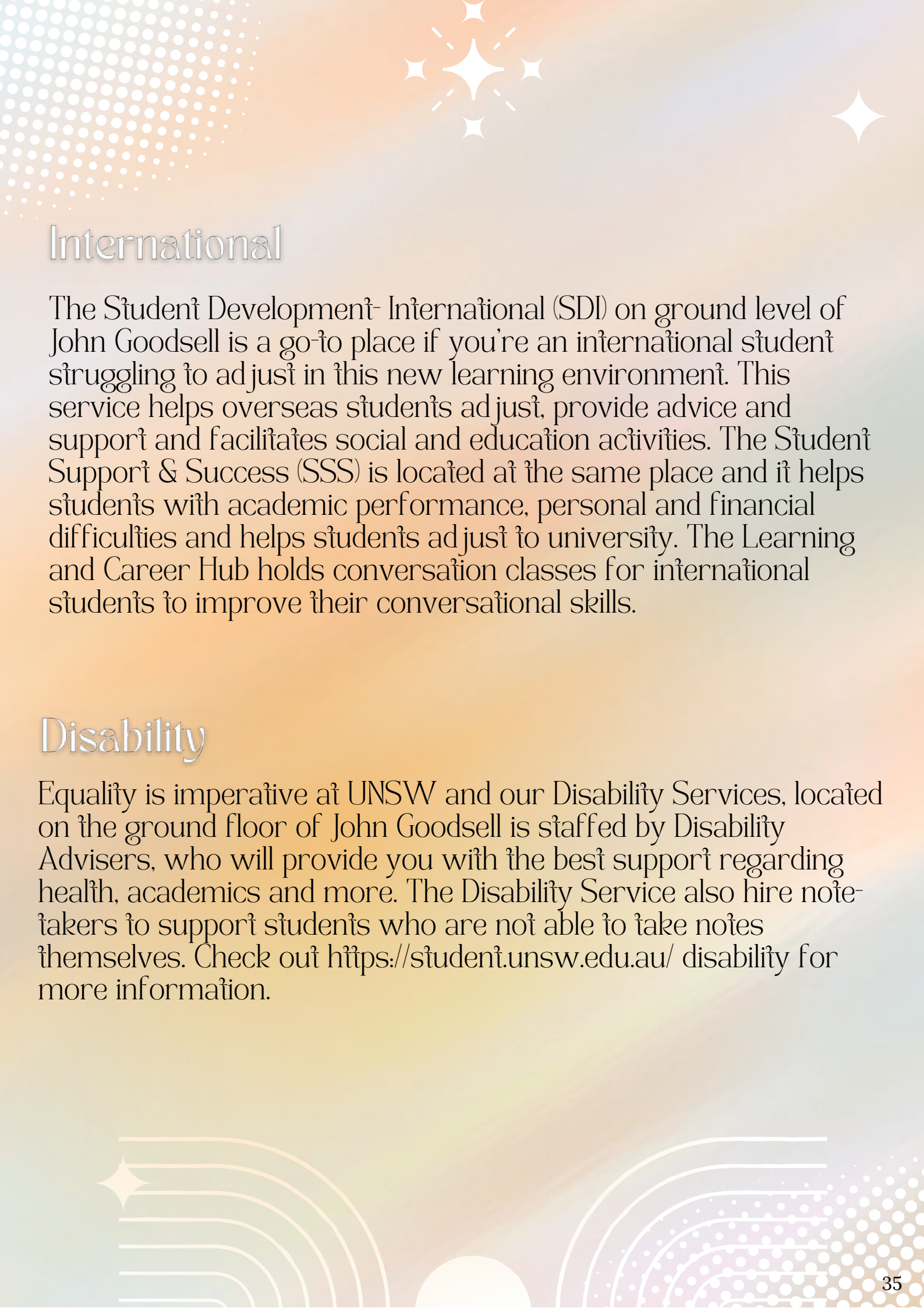


International

The Student Development- International (SDI) on ground level of John Goodsell is a go-to place if you're an international student struggling to adjust in this new learning environment. This service helps overseas students adjust, provide advice and support and facilitates social and education activities. The Student Support & Success (SSS) is located at the same place and it helps students with academic performance, personal and financial difficulties and helps students adjust to university. The Learning and Career Hub holds conversation classes for international students to improve their conversational skills.

Disability

Equality is imperative at UNSW and our Disability Services, located on the ground floor of John Goodsell is staffed by Disability Advisers, who will provide you with the best support regarding health, academics and more. The Disability Service also hire note-takers to support students who are not able to take notes themselves. Check out <https://student.unsw.edu.au/disability> for more information.





Financial

If you are struggling financially, UNSW offers a wide range of scholarships as well as student loans and different fee payment plans, depending on each student's eligibility and circumstances. HECS-HELP is also available to any Australian citizen or permanent resident. In addition to this, practical advice and skills services are offered to students to help manage their finances.

Indigenous

Since its birth in 2018, UNSW's Indigenous Strategy recognises the importance of Country, community and culture by providing a framework for Indigenous education, employment and research. Nura Gili is a centre for Indigenous programs is located in Balnaves Place, Lower Ground of the Electrical Engineering Building. They offer tutoring programs for subject specific areas, study and meeting spaces as well as scholarships for indigenous students.

LGBTIQ+

The ALLY is a program that aims to ensure UNSW is a safe and welcoming place and is staffed by people who identify themselves as LGBTIQ+. The program also includes discussions about sexuality, diverse gender and explores the challenges the LGBTIQ+ community is facing. ALLY aim to reduce barriers of fear and ignorance that lead to prejudice and discrimination.

