

Jewellery Sizing Guide

Whether you're buying for yourself or sneakily trying to get someone else's size, everything you need is contained in this wonderfully helpful guide.



Claire Howard
JEWELLERY

Sizing for a ring.

Visit a Jeweller.

The most accurate way to work out your ring size is to go to any high street jeweller and ask them to size your finger for you. Remember that there are differences between your fingers so one size does not fit all!! If you are looking at a spinner ring or a stacking ring set with 4 rings or more, then make sure you ask for a fitting for a wide ring. They will give you a letter which is your ring size, for example M or M $\frac{1}{2}$.

Use our sizing chart.

If you can't get to a high street jeweller or you are having a surprise ring made for someone, then the chart on the following page is what every super spy needs!

We all have a ring which we know is the perfect size, whether it is winter or summer, so just print off the chart of page 3, lay that ring on to the circles below and note down the size. When printing, make sure you DO NOT set the printer to fit to page / printable area.

It is really important you line up the inside of the ring for me to work from. If you're unsure, you can always lay the ring on to a ruler and take a screen shot so that I can see the measurement from one inside edge to the other.

Send the photo to:

claire@clairehowardjewellery.com



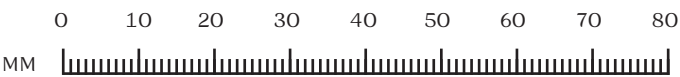
Purchase my ring sizer.

A cable tie ring sizer is [available from my website](#) which does exactly the same thing as the totally diy method of finger sizing below. The price of the one on my website is redeemable against your purchase of a ring. Use our do-it-yourself sizer.

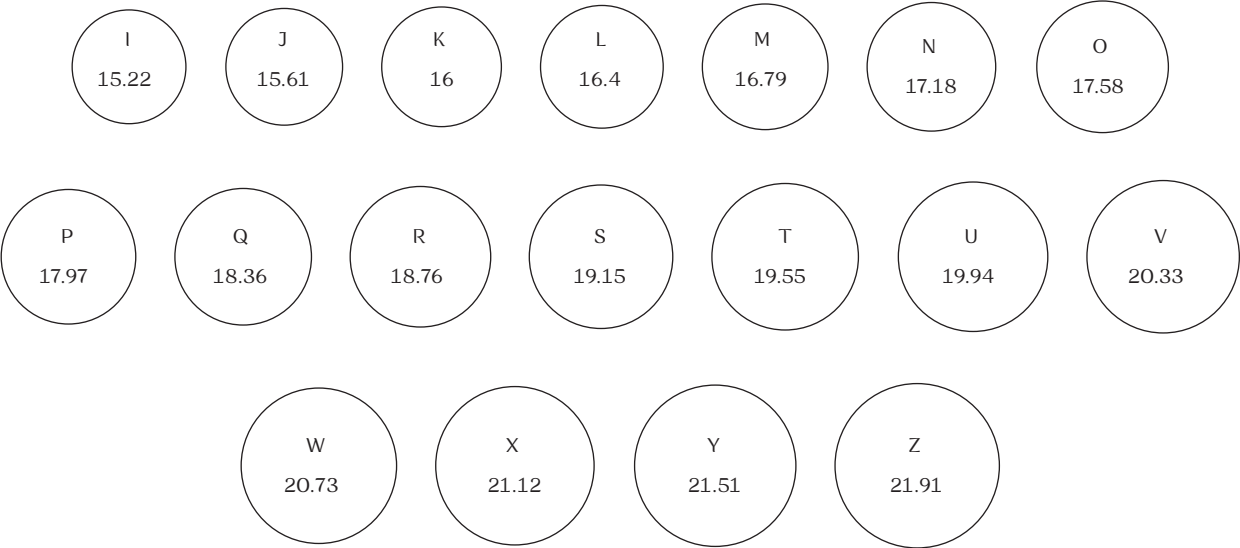
In a rush?

All you need to do is a bit of cutting and shaping! Print off the ring sizer on page 3 and make sure you DO NOT select 'Fit to page/printable area. Cut out the sizer and then cut the slit to thread the end through, put it around your finger and like a cable tie pull it tight to fit. A great tip is to put some sellotape over the sizer before cutting it out to make it stronger. Make sure that it will comfortably move over your knuckle and you should be able to read your finger size.

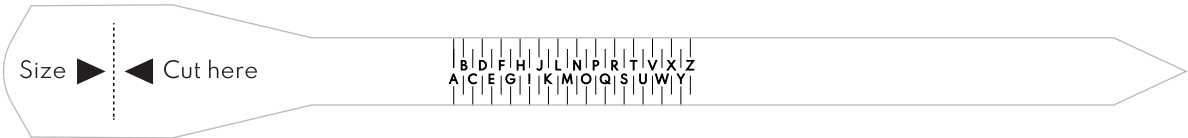
All sizes in mm. Ensure your printer is NOT set to fit to page / printable area. Once printed, you can check against this guide with a ruler just to make sure!



Ring sizing chart.

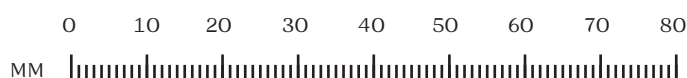
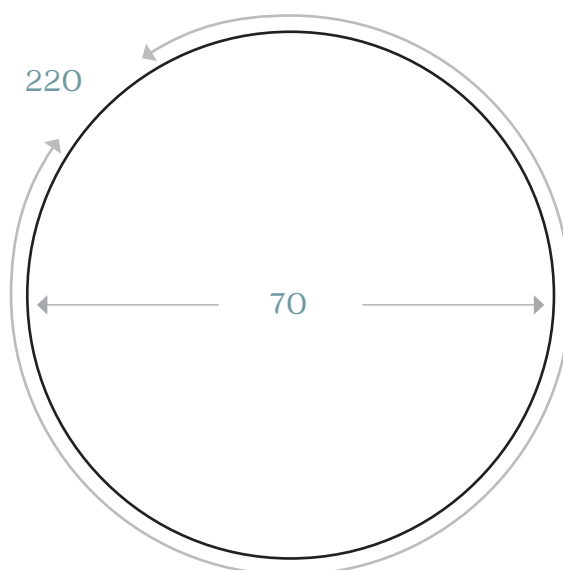
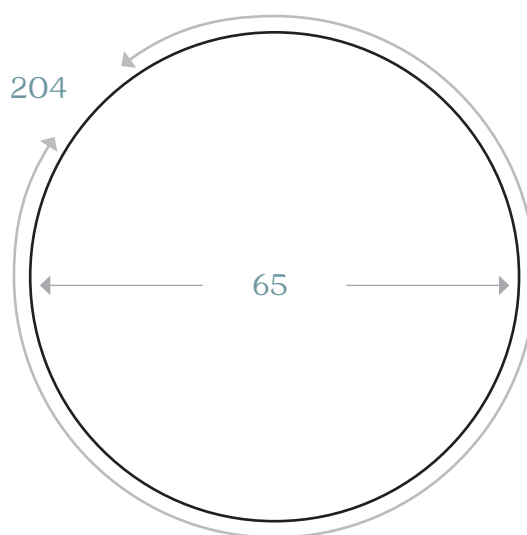
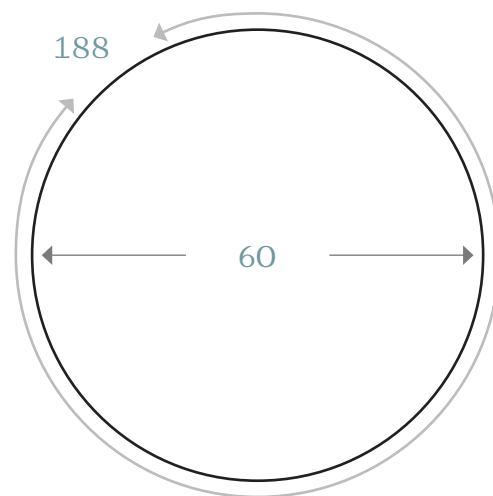


Ring sizer.



Sizing for a Bangle.

Sizing a bangle is a little more complicated but can be done by folding your thumb in to your palm and then measuring around your knuckles. This will give you a length in cms which you can email through to me. If you don't have a tape measure, use a piece of string and lay it on a ruler afterwards. If you have a bangle which you know fits and is comfortable, print out this sheet and lay the bangle on the examples, making sure that the inside of the wire lines up with the circle on the sheet. This will tell me the size. If it does not fit these general ones, then either measure the INSIDE diameter of the bangle (from one inside edge to the other), or lay the bangle over a ruler and send a photo to claire@clairehowardjewellery.com if that works nice and easily for you!



All sizes in mm. Ensure your printer is NOT set to fit to page / printable area. Once printed, you can check against this guide with a ruler just to make sure!

Sizing for a Necklace

Now, let's talk about necklace lengths. Picture yourself draped in jewels, ready to conquer the world!

Choker length.

The choker length is like a whisper of elegance around your neck, adding a touch of sophistication without being too flashy. If this is your aim with the necklace, choose the 16" chain. All my necklaces are available in this length.

Princess length.

It gracefully drapes just below the collarbone, offering a timeless and refined look that's suitable for any occasion. This chain is the 18" length. All my necklaces are available in this length.

Matinee length.

The Matinee length typically falls just above the bustline and is often used for more formal occasions or when you want to make a statement with your necklace. It's great for pairing with higher necklines and measures 20". All my necklaces are available in this length.

Opera length.

Long, luxurious, and oh-so glamorous, it makes a statement without saying a word, ideal for dark tops or dresses. Opera-length necklaces are 30", take a look at my Holkham Acorn necklace or my Star Anise necklace for this length.

So there you have it, a guide to necklace lengths! Remember, it's not just about the jewellery, it's about how you carry yourself with grace and confidence that truly makes you shine.

