

# Spend Analysis

## About us

Enjoy AI focuses specifically on developing AI-driven data analysis to support the purchasing function. Analysis are accessible online on a pay-per-use basis.

## What is a Spend Analysis?

A spend analysis is a systematic examination of a company's expenses to understand how the money is spent. This is done to identify potential savings and improve the efficiency of the procurement process.

## Overview

The necessary data for the spend analysis is first collected. It comes from sources such as purchase orders and invoices. The data is categorized and visualized in different ways to gain insight into what the organization spends money on.

## Problems

Collect data. Integrate data from multiple sources. Classify Products. Performing the analyzes and interpreting the results can be complicated and complex.

## Solution

Reduce the number of problems to just delivering the data. The data preparation, processing of the data, including classification, and presentation in Power BI is performed online and managed by Zuiver Analytics

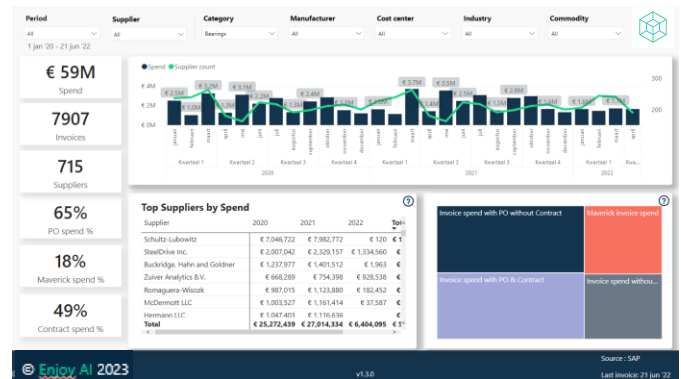
## Application

- ✓ Support decisions for the purchasing strategy
- ✓ Gain insight into the organization's expenses.
- ✓ Cost savings
- ✓ Identify risks

## Data en processing

A specification of the dataset describes what data is needed to realize the spend analysis.

The spend analysis is accessible in Power BI Service



## Spend Analysis dashboard

- Overview • Per Group • World Map • ABC •
- Kraljic Matrix • PO-Non PO • Invoices • Details •