



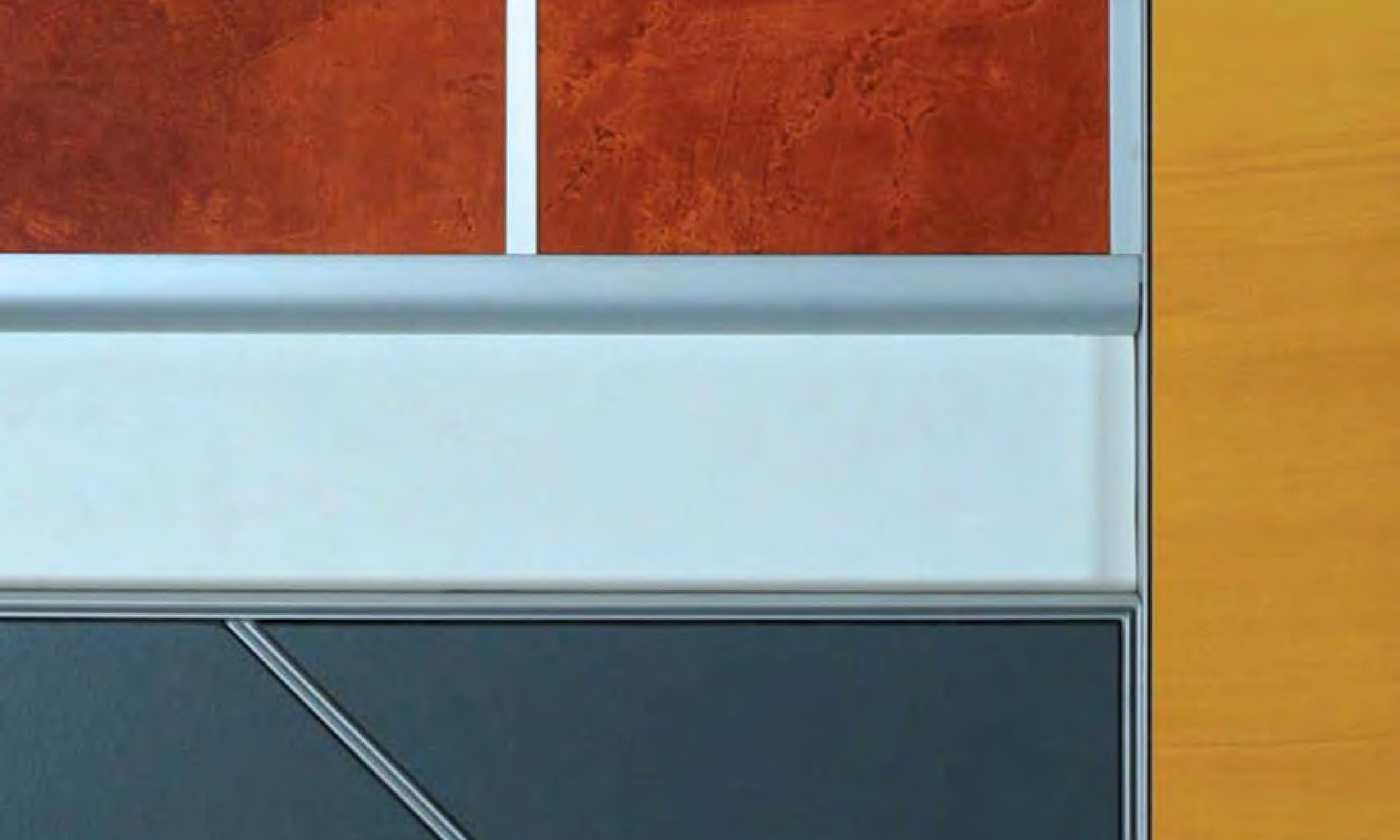
ARCHITYPE
presents

WPS

The Most
Complete Panel
Systems in the
Market

Architectural Panel Systems for
Interior and Exterior Applications

2022



Our Mission

Our mission, in partnership with Wall Panel System – WPS, is to provide the most complete panel systems available in the market today. WPS specializes in the design of interior and exterior panel mounting systems, supplying both the engineered attachment system and paneling. In other words, you are

specifying an entire warrantied system without worrying about selecting panels and trim from various vendors in the market. If you are trying to achieve beauty and functionality in a budget and installer-friendly manner, look no further. Let us help you bring your design vision to reality with WPS.

SHOP DRAWINGS & FABRICATION

Shop drawings are provided for all projects to ensure everyone is on the same page. Once we have the approved drawings, the project is sent to our production line for processing. Our in-house panel fabrication machinery allows us to produce panels at a rapid pace and provide flexibility in meeting your project scheduling needs all while maintaining the highest level of quality.

WARRANTY & INSTALLATION

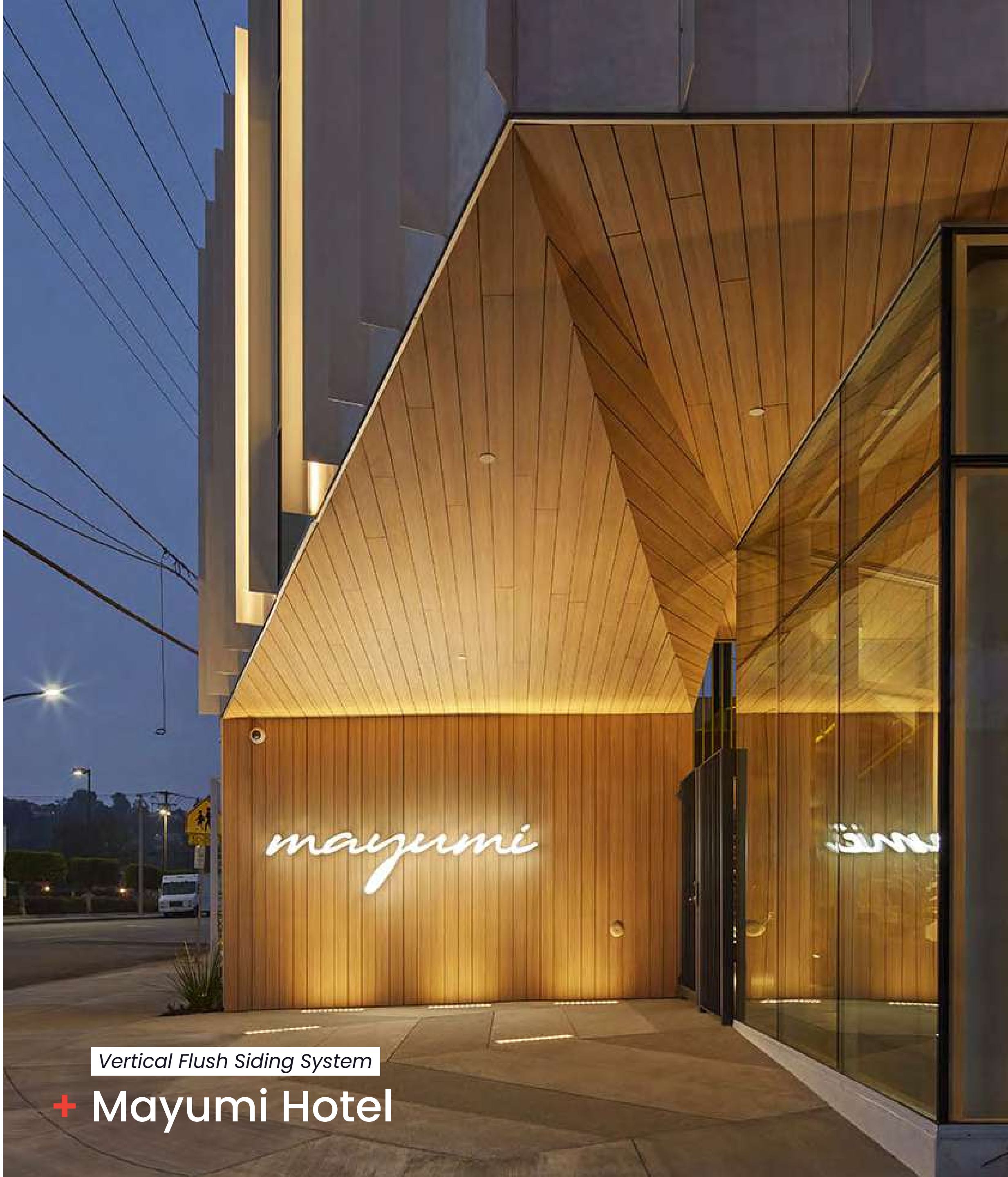
WPS extends a 10-year warranty to all attachment systems. In addition to the warranty, we offer on-site installation support for all projects to ensure field work is completed correctly and efficiently.



Face Mounted System

+ San Diego International Airport

Vertical Flush Siding System
+ Mayumi Hotel



ES-500 Fastening System
+ Beverly Gardens Park





Shadowline System

+ Orlando International Airport

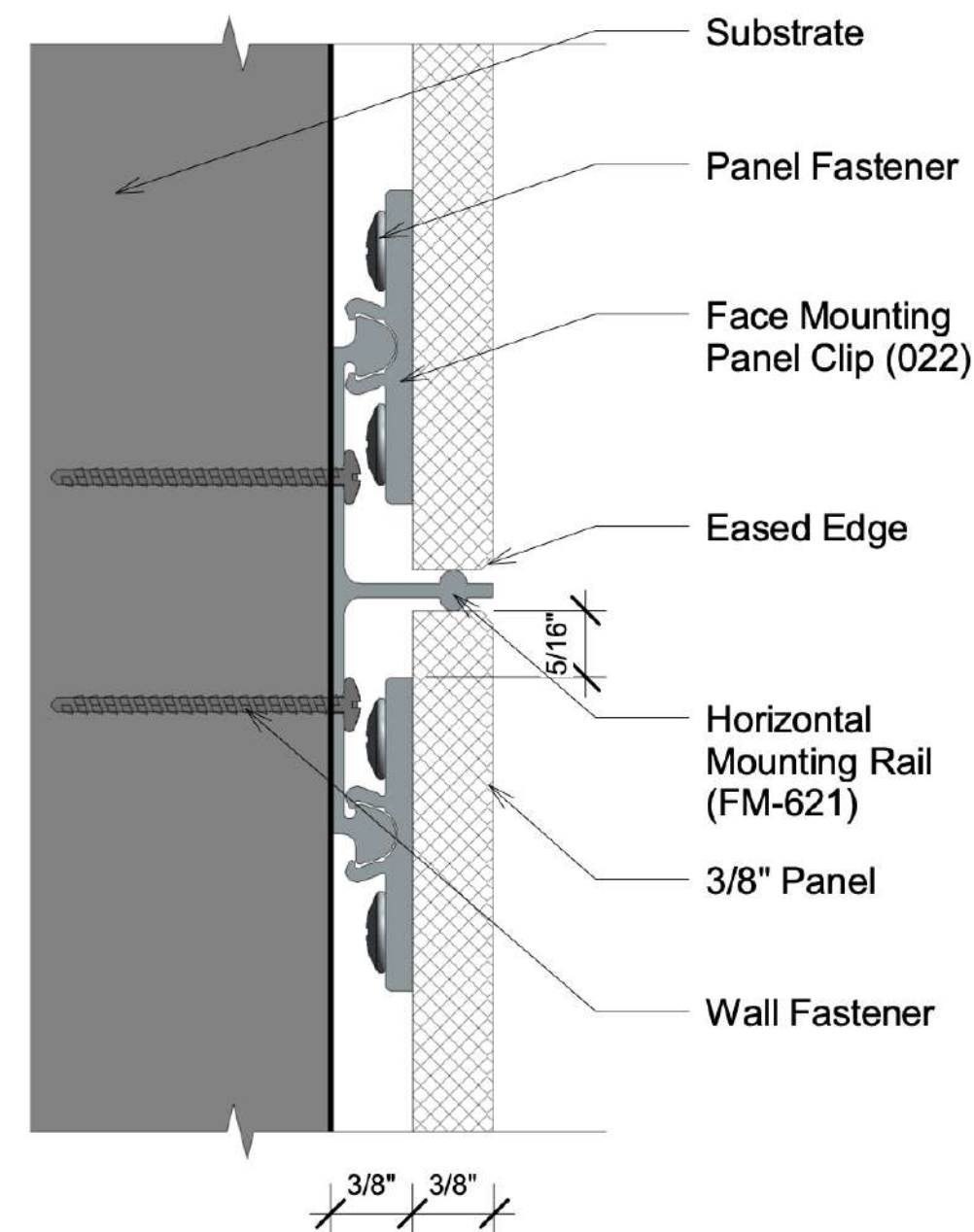


Face Mounted System
+ CityNorth Houston





Shadowline System



① Section B
12" = 1'-0"

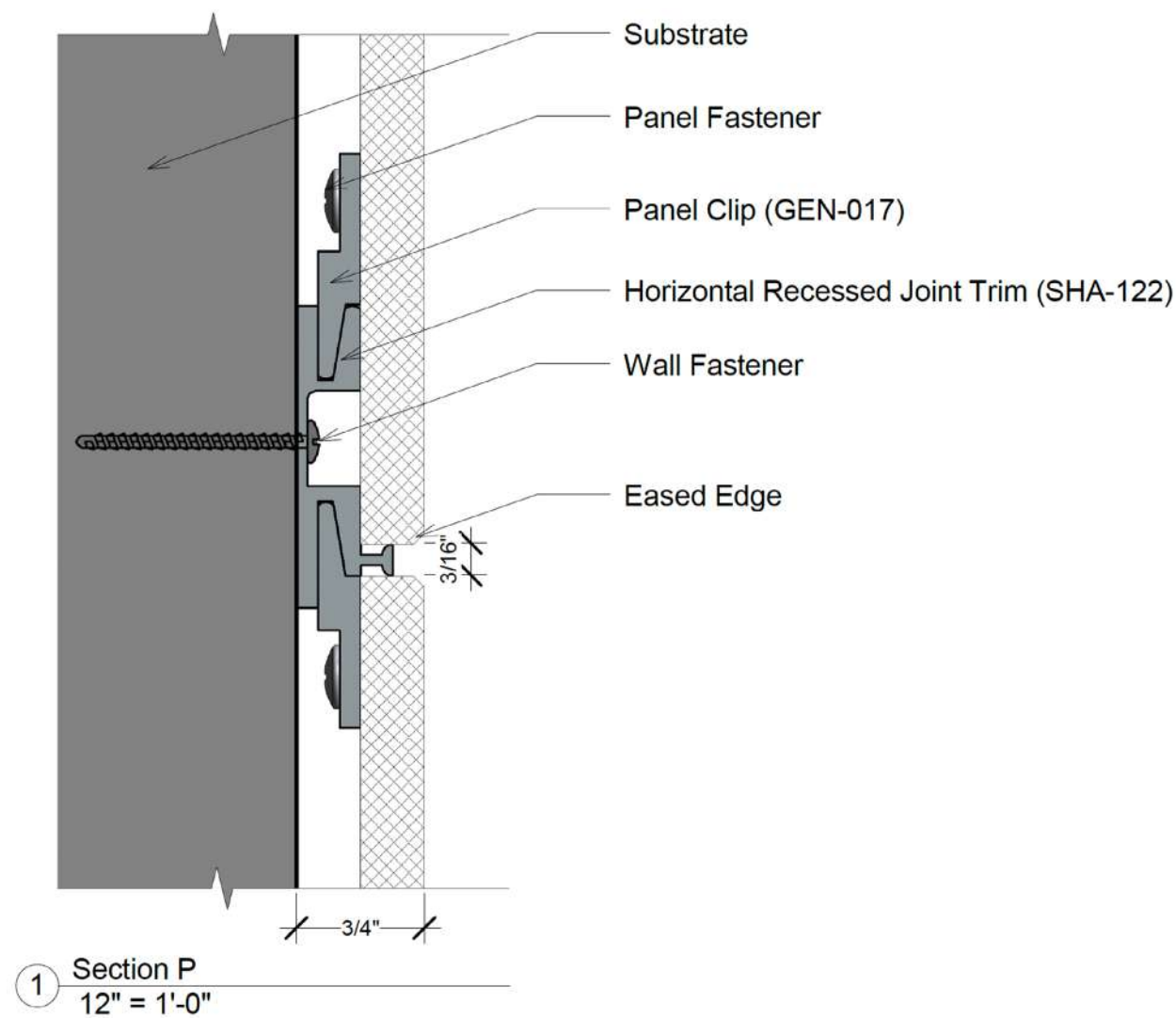
The most popular of our systems thus far has been our Shadowline system. Designers prefer this system due to its subtle and upscale look. Featuring the smallest aluminum reveal we offer (3/16"), the narrow edges and joints leave a slight shadow between the panel and the extrusion. The Shadowline System also features four outside corner profile options, including a square profile and a radius profile. WPS has recently added a square stainless steel corner piece as an option for high-traffic areas.



Panel Material: *Trespa*



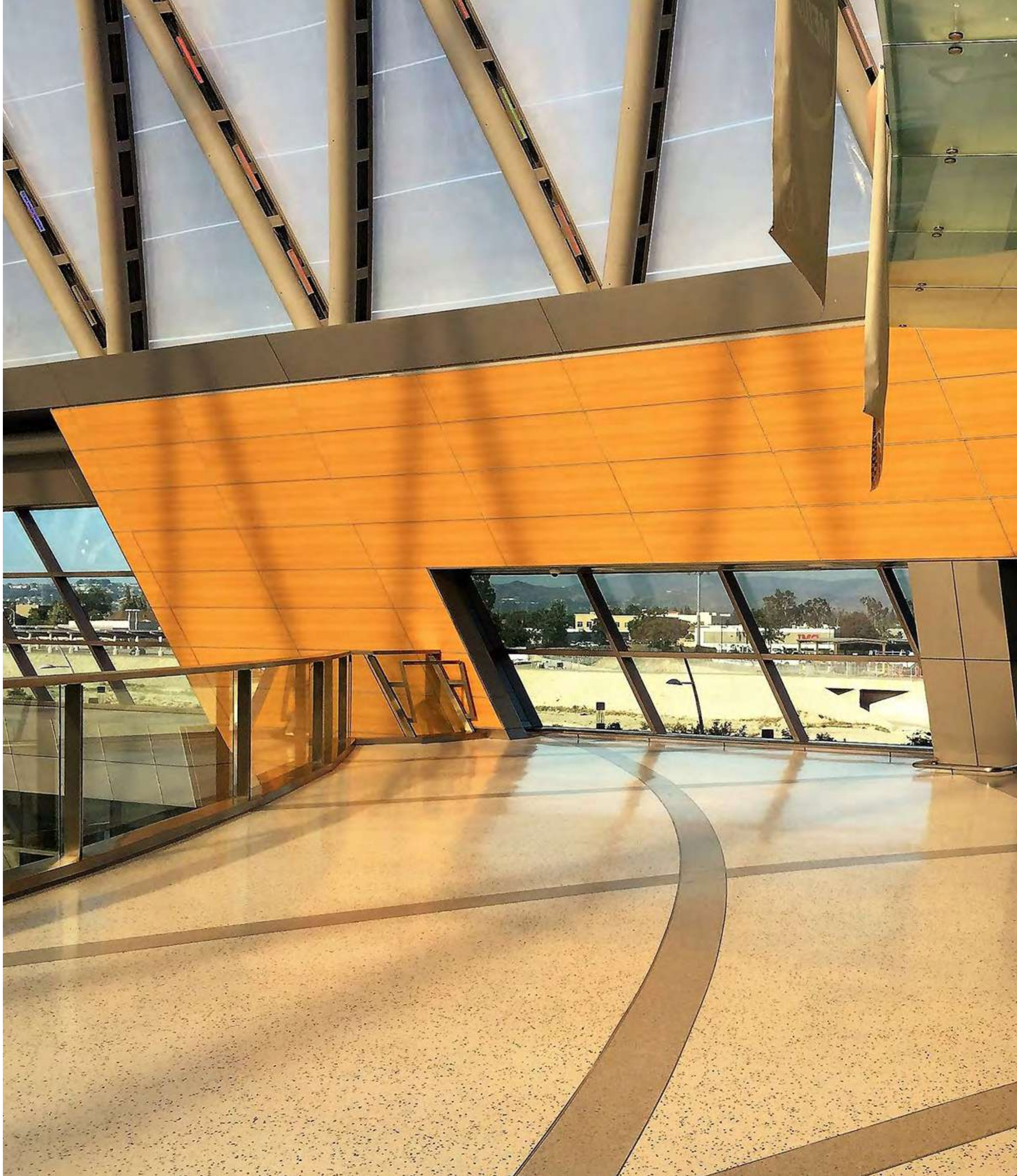
Face Mounted System



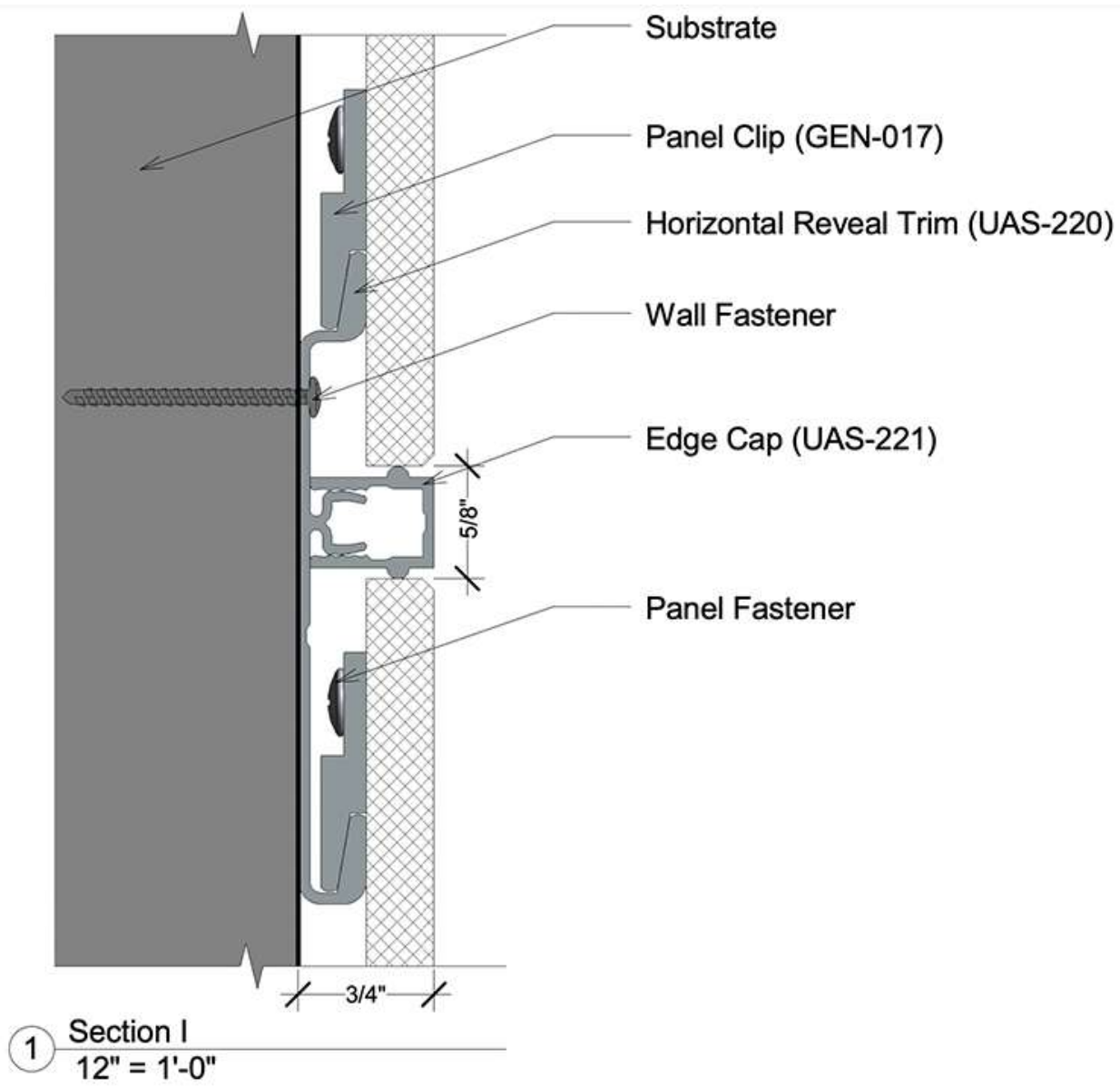
The Face Mounted System, (FMS), features a new, non-progressive installation process to maximize efficiency while maintaining the aesthetic appeal of our popular Shadowline System. With an average installation time savings of over 30%, the Face Mounted System is the perfect solution for keeping overall costs down and a great solution for any designer with the freedom to choose a variety of panel options and the ability to install, remove, or replace any panel without affecting adjacent panels.



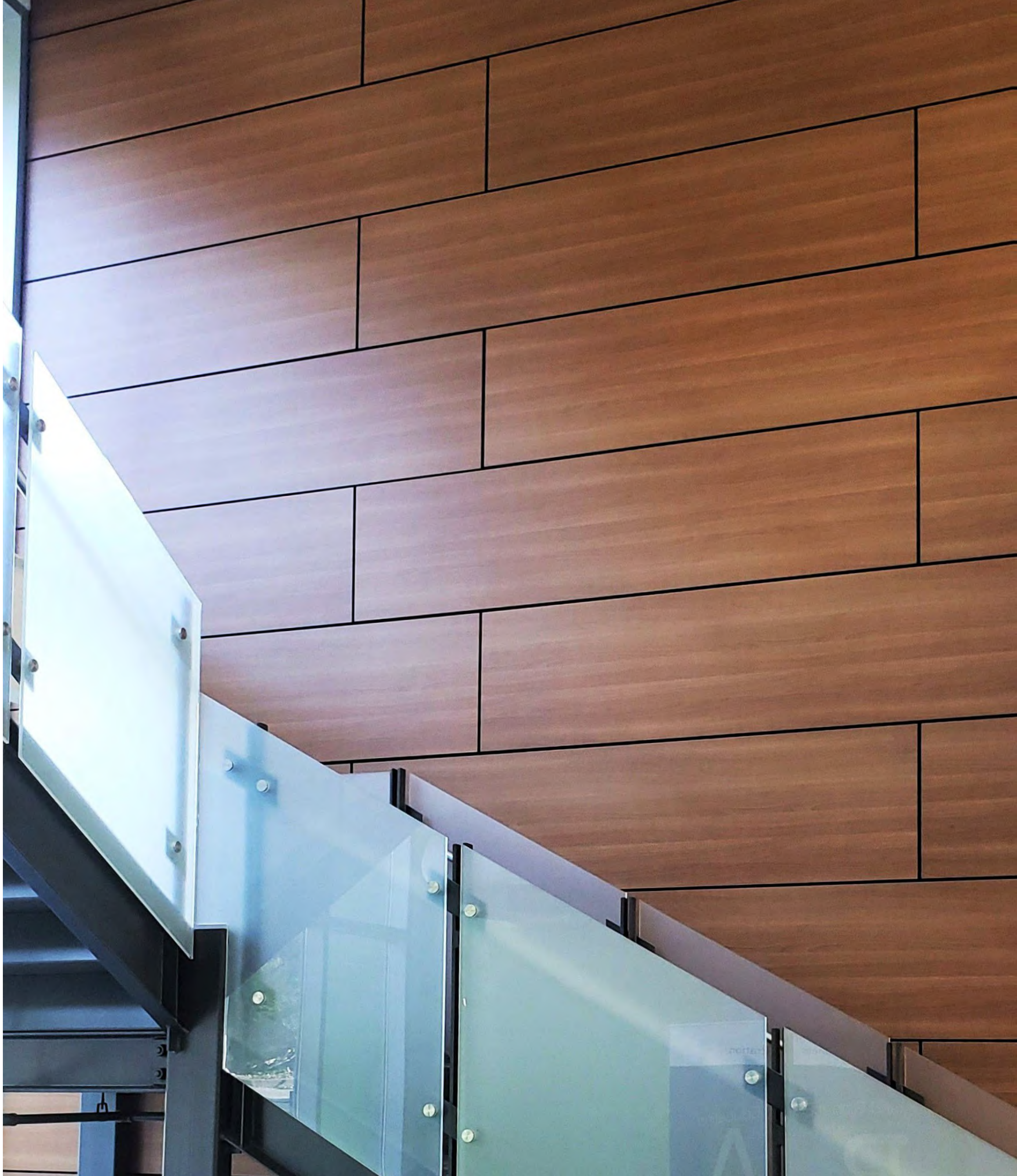
Panel Material: *Wilsonart*



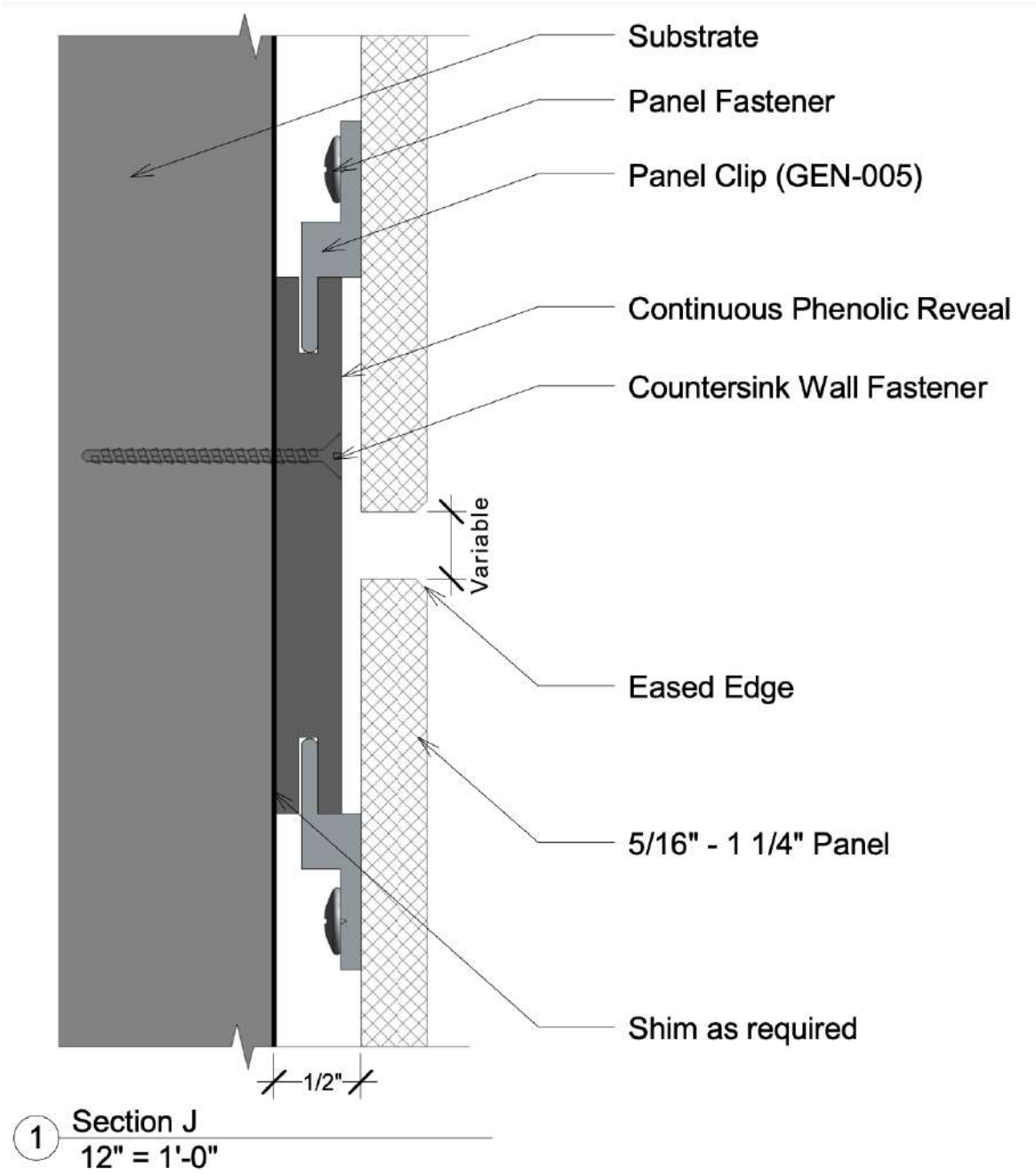
Universal Architectural System



The Universal Architectural system was designed with the end-user in mind. This system allows panels to be removed and replaced with ease. By simply installing all of the aluminum trim, an installer can complete all the prep-work before the panels arrive. This system is designed to allow each panel to be securely hung in place without relying on its neighbors.



Recessed Reveal System



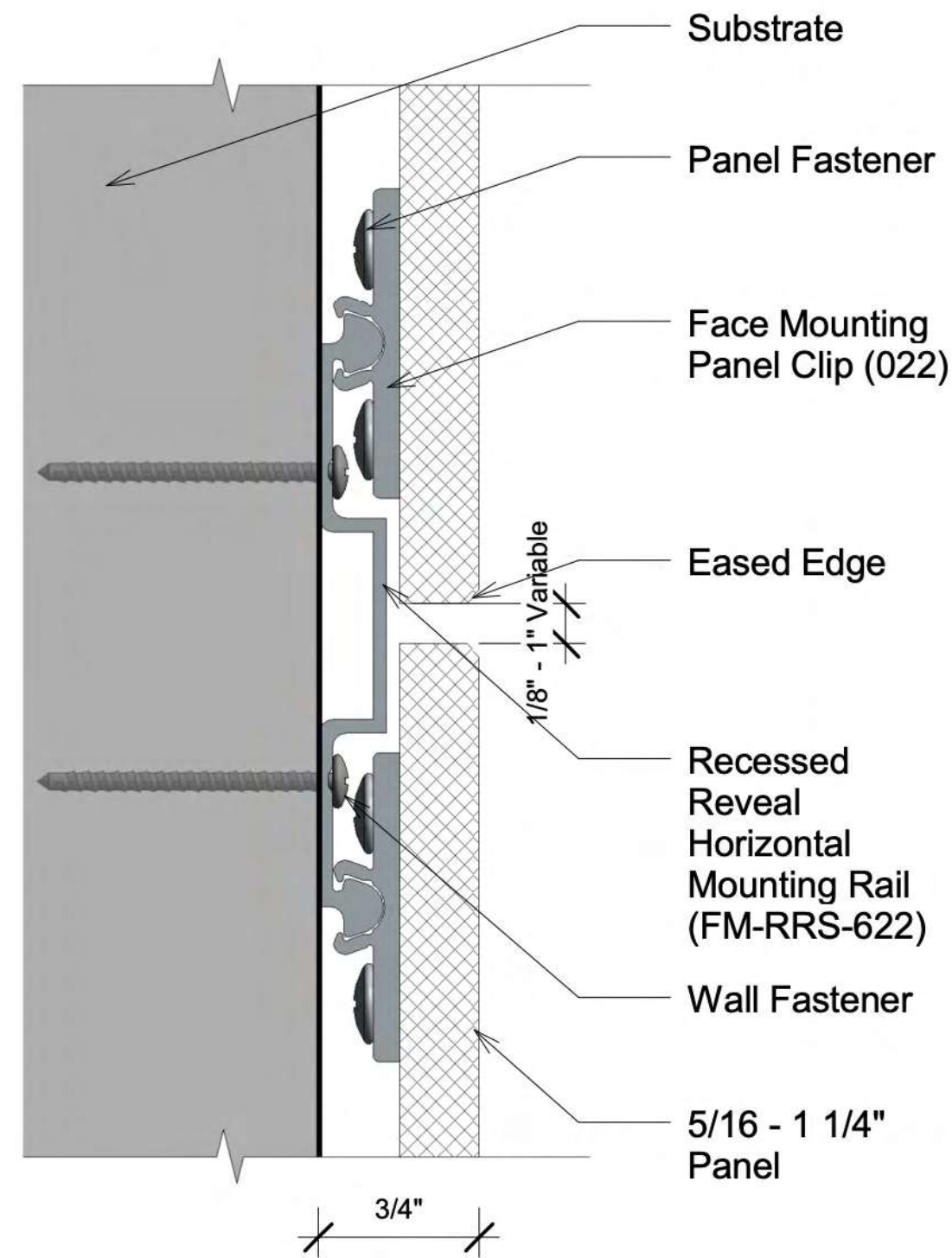
Replacing the typical Z-clip application, the Recessed Reveal system is a unique system that uses dense phenolic panels instead of aluminum extrusions. Any dense material can be used accommodating panel thicknesses of 5/16" up to or exceeding 3/4". This system offers the most design flexibility and can accommodate reveals of 1/16" up to 1 or 2". The reveal material can be black, or it can be the same color as the panel to give a more polished appearance.



Panel Material: *Trespa*



Recessed Reveal Face Mounted System



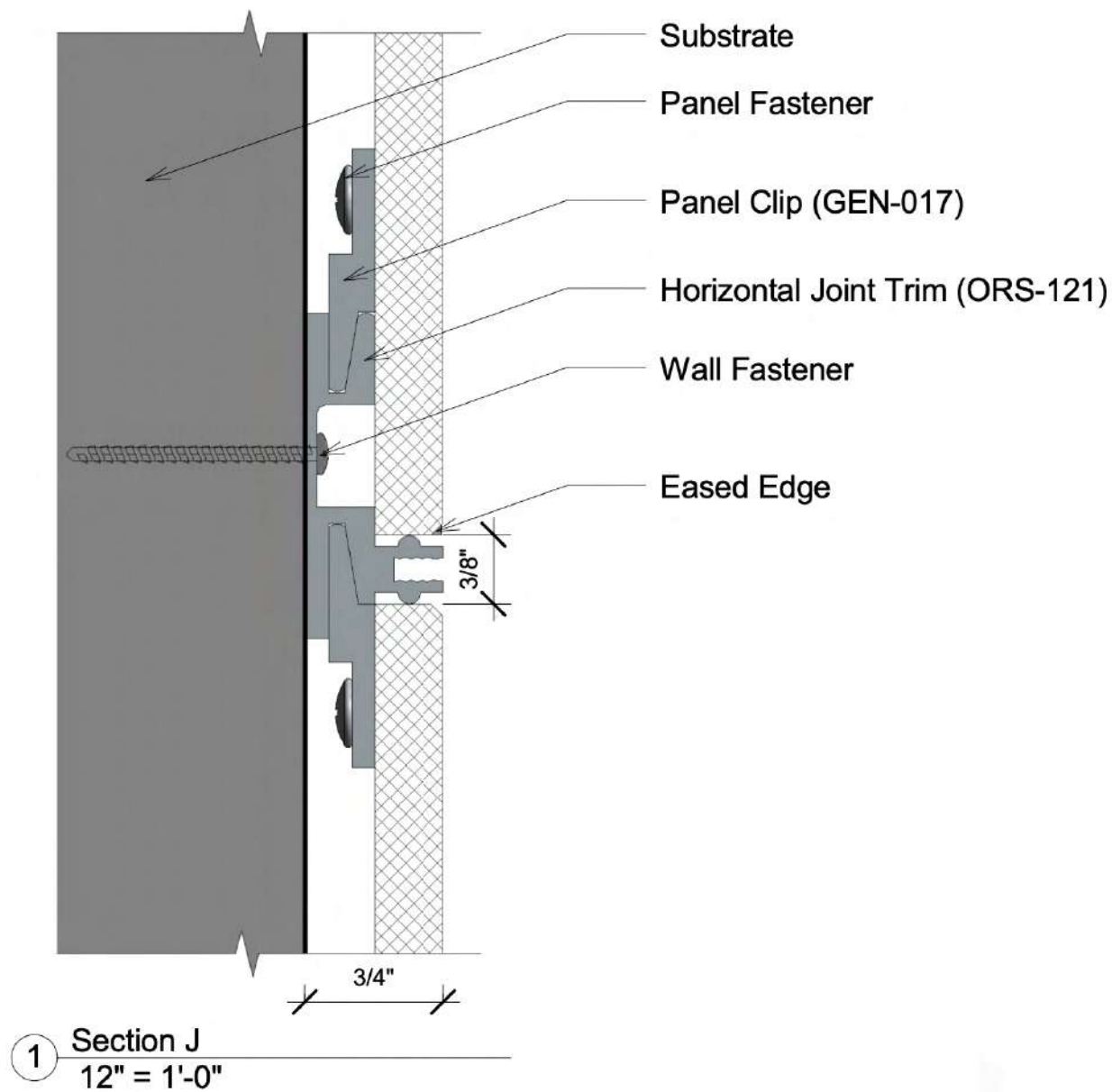
1 Section B
12" = 1'-0"

The Recessed Reveal Face Mounted system is a non-progressive system that bypasses aluminum trims between joints and edges to present a clean design. Joints and edges are available to use with a recessed standard black anodized or any other custom color. The joints can be 1/8" - 2" wide open and with the option of panel thickness from 5/16" - 3/4".

Panel Material: *Trespa*



Open Reveal System

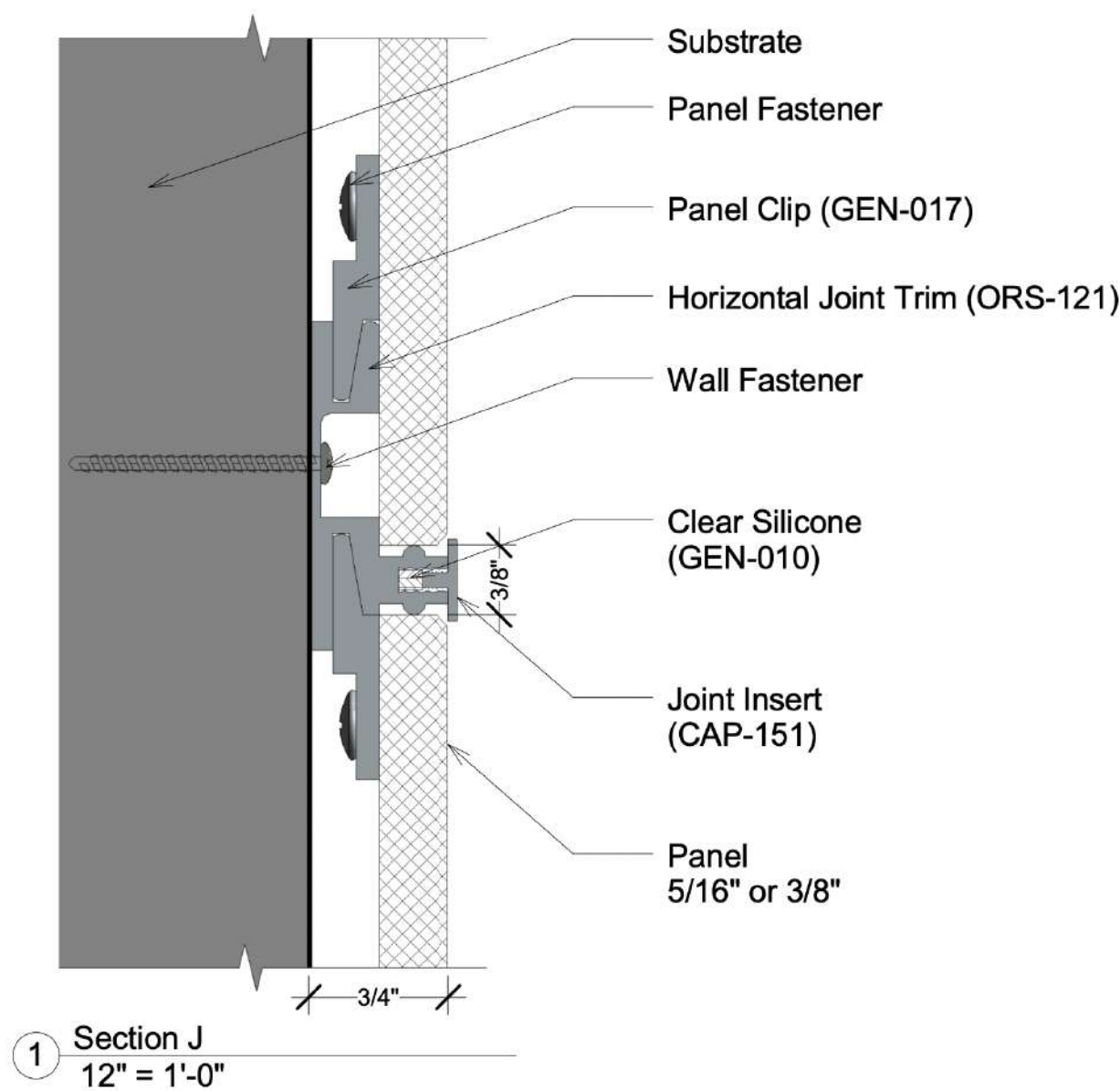


The Open Reveal System (ORS) is unique due to its 3/8" channel that runs through all the edges and reveals. Designers looking for a functional reveal that stands out prefer this system. The channels contain "teeth" that not only provide elegant detailing, but also give the extrusion the ability to grab on to hooks or clips placed in the channel, allowing artwork, photography, or presentations to hang and be easily removed without damaging the wall panels. The ORS offers three outside corners and can also utilize stainless steel corners or any of the outside corners.

Panel Material: *Trespa*



Captured System



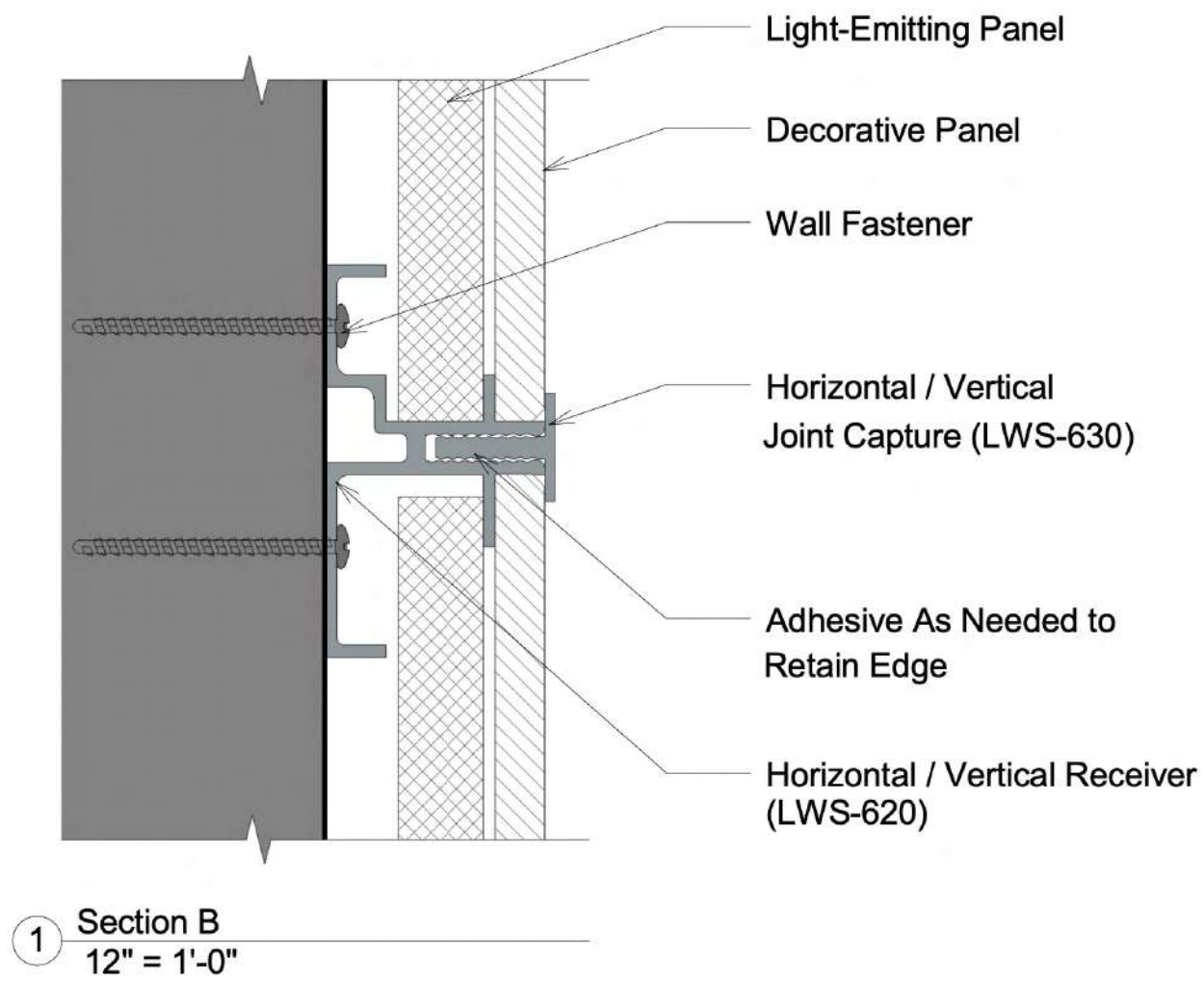
The Captured System features a 7/16" insert piece that hides the edges of the panels. This system is beneficial for high-traffic areas and prevents potential damage to panel edges. The 7/16" insert piece is currently the widest metal reveal available and, although it is not a flush-mounted system, the insert piece does not unduly extrude past the face of the panel. The Captured system also features a radius and square edge that are ideal for wainscot walls.



Panel Material: *Trespa*



LED Light Panel System

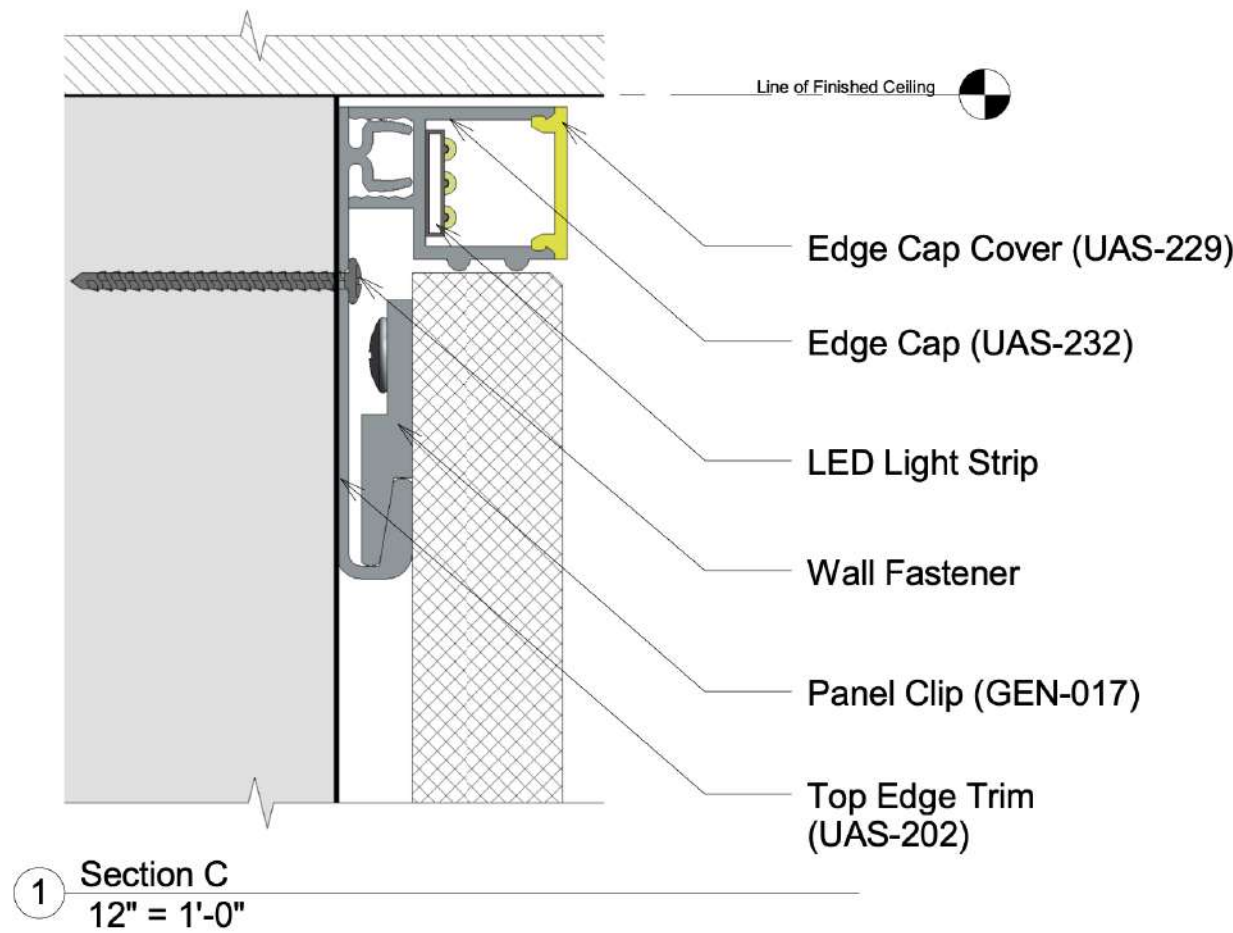


The Light Panel system is structured with LED panels in large size decorative acrylic, glass, or graphic panels. Thickness of panels available to use with the system ranges from ¼" –½". The light panel option is available in 12V-24V with multiple LED color options to choose from.





LED Light Reveal System



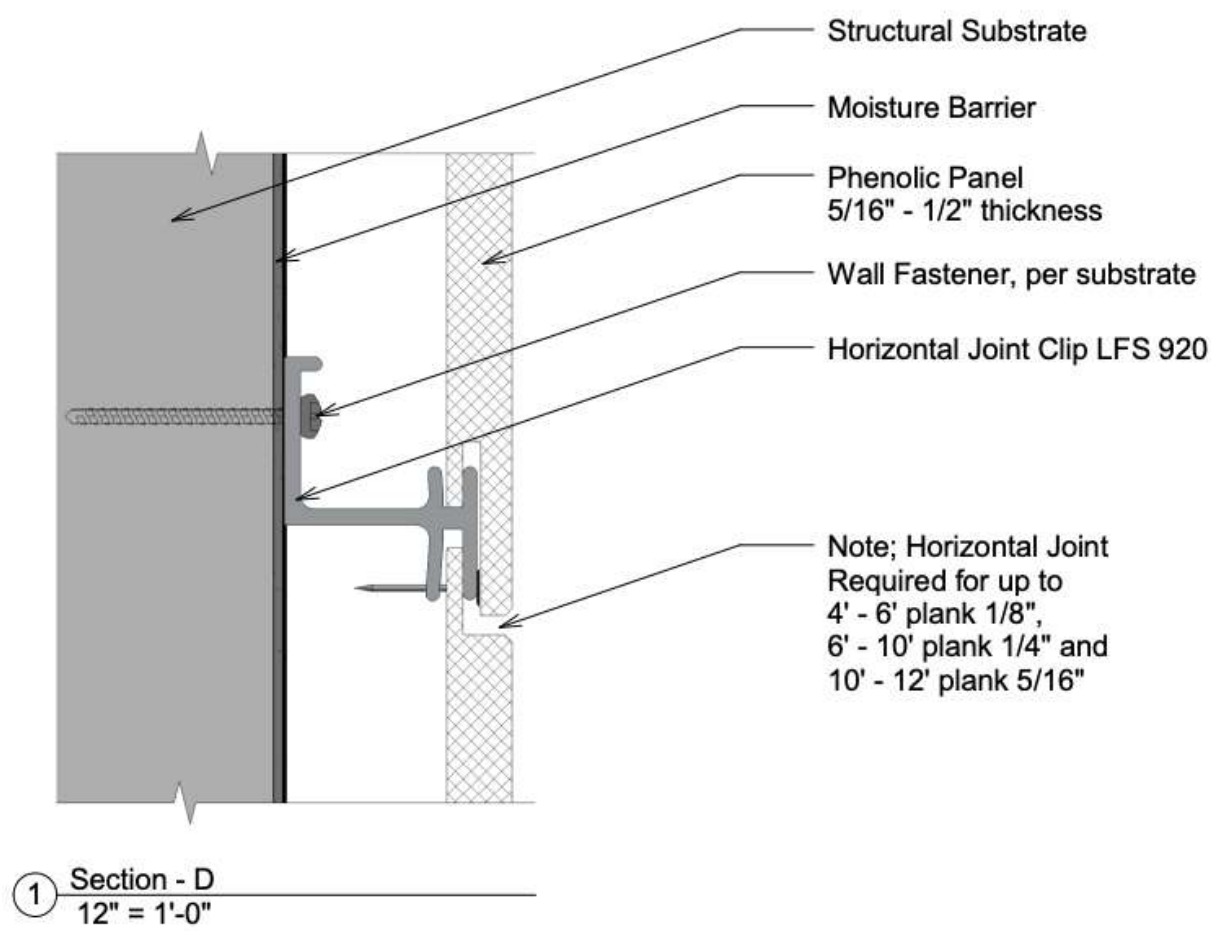
The LED Light Reveal system is a newly added system option to use LED light strips within the joints and edges. The system was designed for use with glass, phenolic and wood panels within a 5/16"- 3/4" thickness. There are multiple variations available to use with the LED light such as colors, dimmer switches, and 12V or 24V.



Panel Material: *GlasPro*



Vertical Flush Siding System



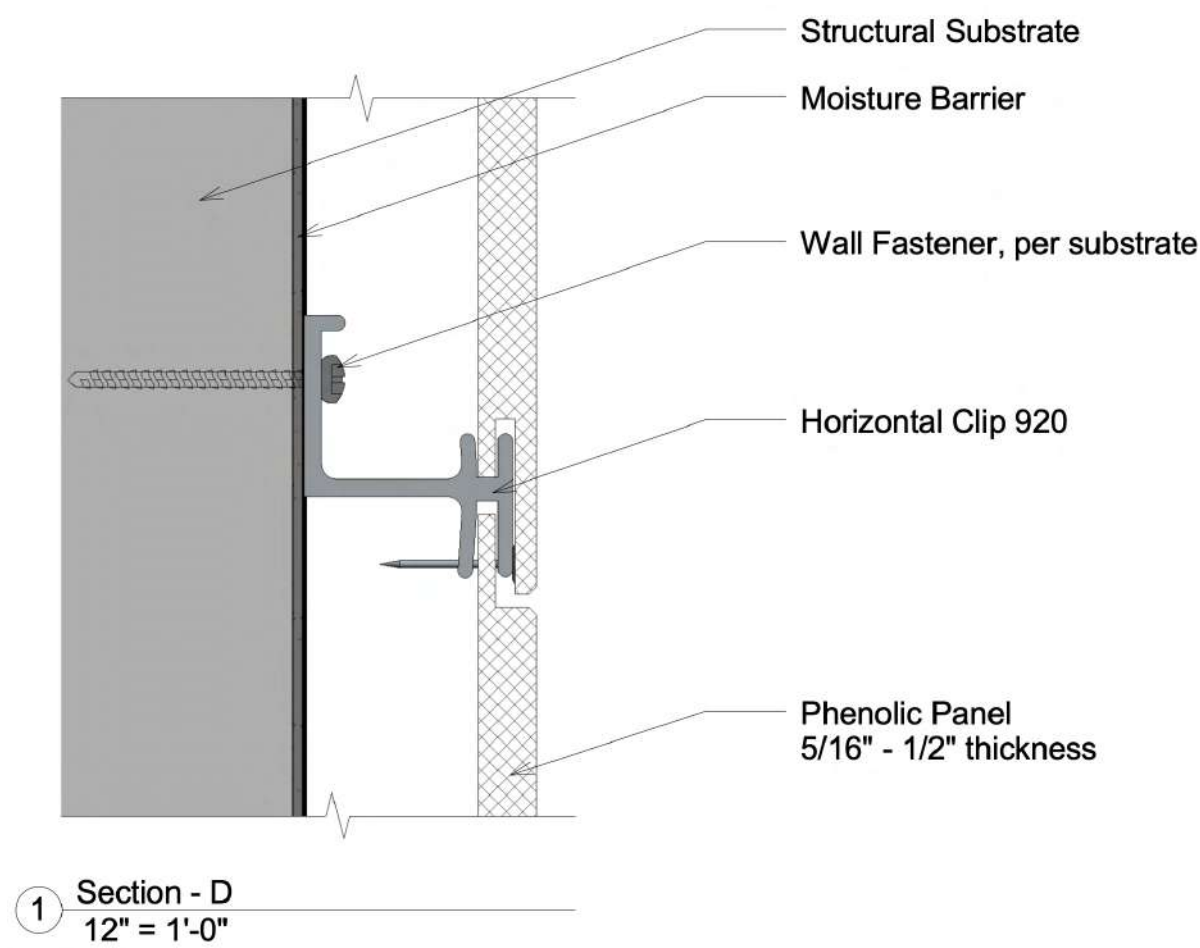
WPS Siding systems are tailor-made to take creative advantage of the exciting mix-and-match approach to exterior wall design by combining various products, styles, and colors to create truly unique exterior designs with looks of solid color, metallic, and wood grain finishes. Using various combinations of horizontal and vertical flush siding as well as horizontal lap siding can make a bold statement. The durability exceeds industry standards in all water, wind, and impact criteria. Panel finishes along with UV protection provide long-lasting hues and protection against surface scratches which deliver strong, solid panels that stand the test of time.



Panel Material: *Trespa*



Horizontal Flush Siding System



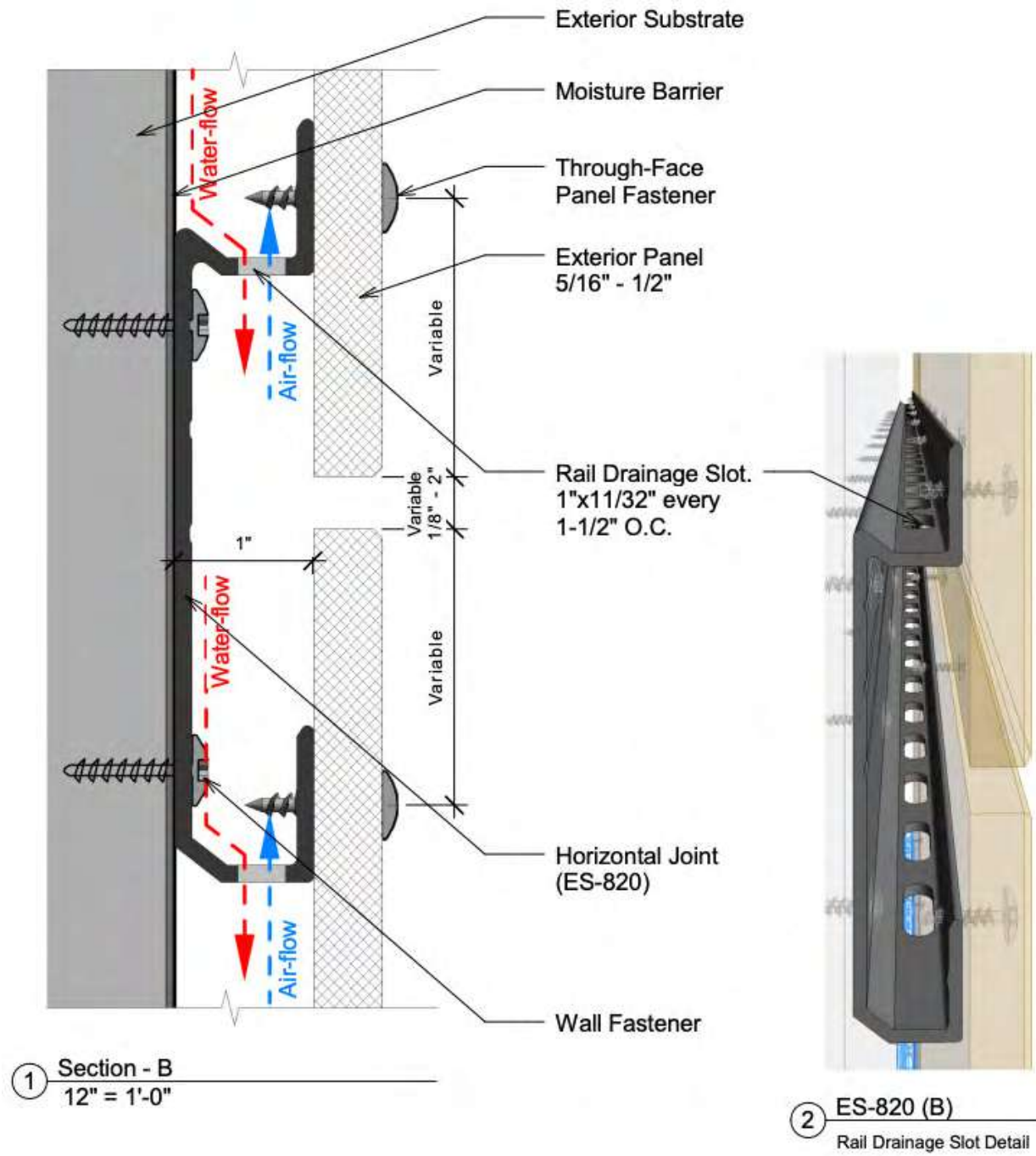
WPS Siding systems are tailor-made to take creative advantage of the exciting mix-and-match approach to exterior wall design by combining various products, styles, and colors to create truly unique exterior designs with looks of solid color, metallic, and wood grain finishes. Using various combinations of horizontal and vertical flush siding as well as horizontal lap siding can make a bold statement. The durability exceeds industry standards in all water, wind, and impact criteria. Panel finishes along with UV protection provide long-lasting hues and protection against surface scratches which deliver strong, solid panels that stand the test of time.



Panel Material: *Trespa*



ES-400 Exposed Fastening System



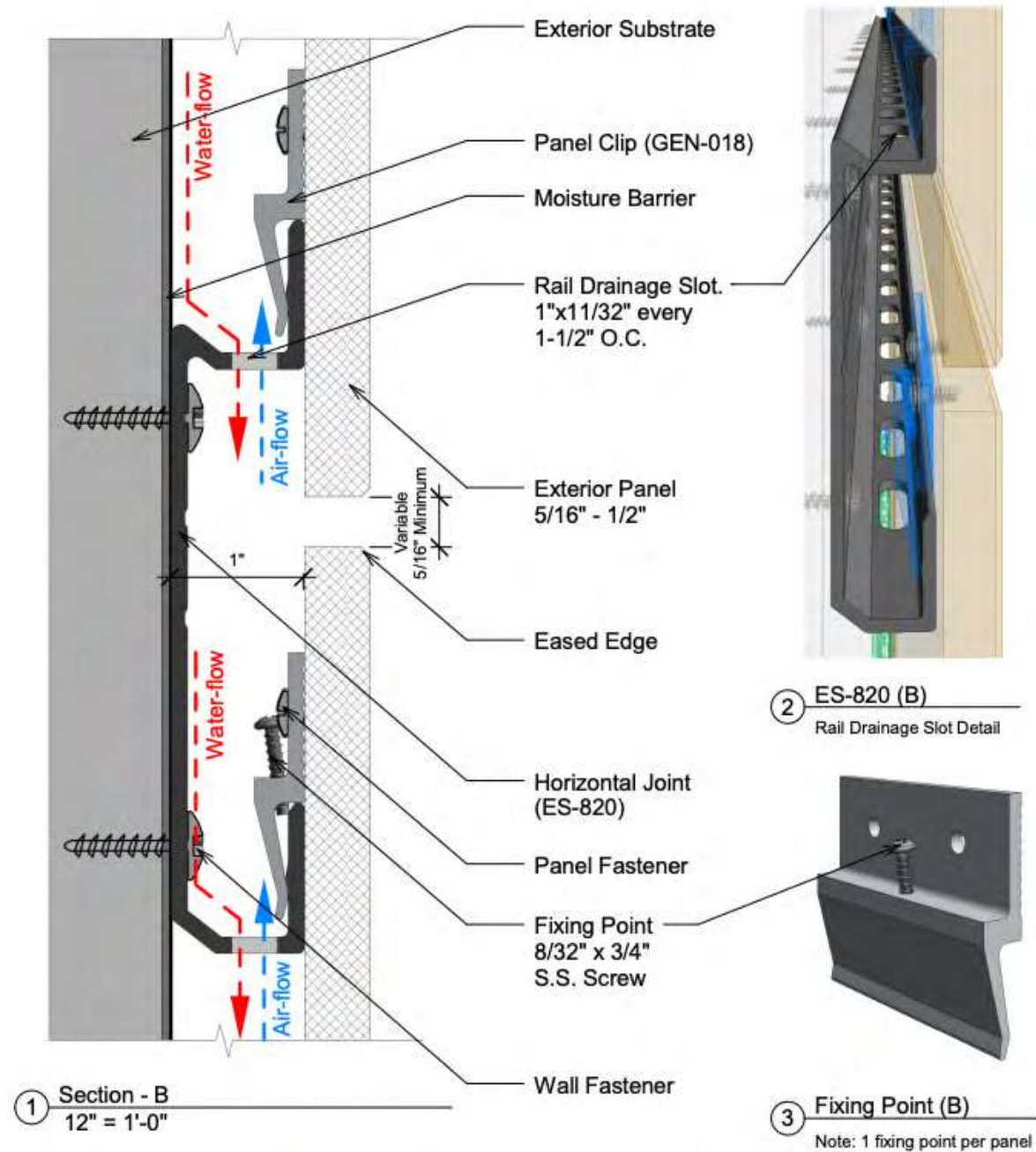
The ES-400 system is a typical exposed fastener system with the unique ability to be used either vertically or horizontally. WPS Exposed Fastener Panel is designed and engineered for commercial industrial wall cladding panels that provides a traditional appearance. The ES-400 system is mechanically fastened with exposed fasteners and can be installed in a non-sequential pattern.



Panel Material: *Trespa*



ES-500 Concealed Fastening System



The ES-500 system uses a typical Z-Bracket system with a compression lock clip that creates a clean, professional aesthetic. The ES-500 is a high-performance cladding system, offered in a range of materials and profiles. The ES-500 unique design allows for rapid installation and a unique visual safeguard to ensure the panels are correctly interconnected.

Panel Material: *Fundermax*

WPS*Partners*

WPS partners with some of the industry's leading panel manufacturers to bring you an extensive panel selection that suits the diverse needs. WPS offers a variety of panel types that provide high durability, low maintenance, aesthetic impact, and low-cost installation.

