

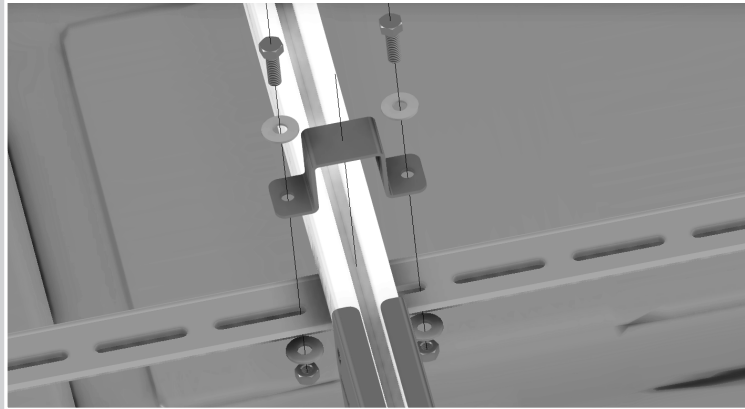
INSTALL OPTIONAL ROLLER-BAR

V-13 Hardware Bag

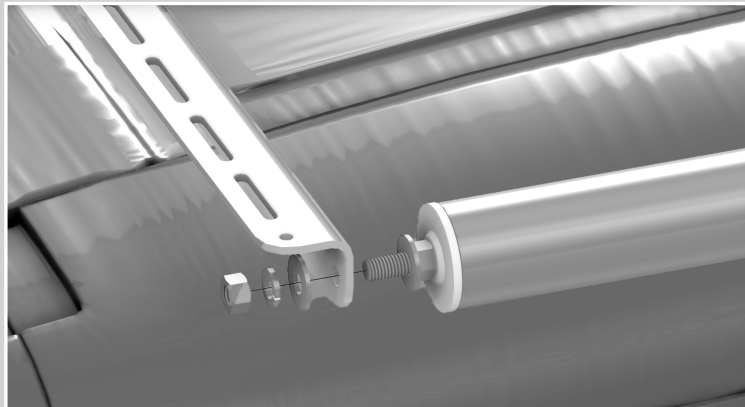
ITEM	SIZE	QTY
Hex Cap Screw Stainless	3/8" x 1"	8
USS Flat Washer Stainless	3/8"	16
Nylock Nut	3/8"	8

1. Loosely bolt the formed angles with the supplied brackets to the roof rack crossbars.

Ensure where the roller will mount will clear the brake light / camera.



2. Remove the 1/2" nut from threads on each end of roller bar (not shown) and insert threaded ends through 1/2" holes on each angle.



3. Place bolts back onto the threads at each end of the roller bar and tighten all bolts, including bolts holding angles to roof rack mounts.

Check to be sure roller bar spins freely.

