



Installation instructions for
Transit Connect

MyGlassTruck.com

(844) 364-4022

Section 1	Read First: Warnings and Important Information	Page 3
Section 2	Orientation and Required Tools	Page 4
Section 3	Installing Roof Rack Adapter and Roof Rack	Page 5
Section 4	Attach Glass Rack to Roof Rack Crossbars	Page 10
Section 5	Attach End Hooks to Roof Rack Crossbars	Page 11
Section 6	Set the Angle of Glass Rack	Page 12
Section 7	Attach Glass Rack Underbody Mounts to Vehicle	Page 13
Section 8	Attach Glass Rack to Underbody Mounts	Page 15
Section 9	Install Front Stop	Page 16
Section 10	Assemble Poles	Page 17
Section 11	Safety Information	Page 18
Section 12	Blind Fastener Installation Instructions	Page 19
Section 13	Final Inspection Checklist, Service and Parts	Page 20

Thank You for Choosing MyGlassTruck.com America's Glass Rack Leader

This document's purpose is to provide a qualified installer with the steps necessary to perform a safe and correct installation.

Before beginning installation read this guide and all other instructions provided by MyGlassTruck.com, third party component providers and vehicle providers to ensure you are familiar with the installation procedure, rack and vehicle.

If you have questions, please call MyGlassTruck.com at (844) 364-4022. Our qualified personnel will gladly provide answers.



CAUTION

Demountable Concepts, Inc., parent company of MyGlassTruck.com, has provided within this document detailed installation instructions for the installer of the aluminum van rack provided by MyGlassTruck.com. Failure to follow these instructions or failure to follow safe shop and workplace practices could result in injury or death of the installer or end user of this equipment. PLEASE read this instruction manual thoroughly before beginning the installation process. If you do not understand any step or procedure that is outlined in the manual, immediately call the Demountable Concepts, Inc. engineering department at (844) 364-4022. Hours of operation are 8 am to 5 pm EST, Monday through Friday. DO NOT PROCEED WITH ANY INSTALLATION PROCEDURE IF YOU ARE NOT CERTAIN OF ITS CONTENT, INTENTION AND DESCRIPTION.



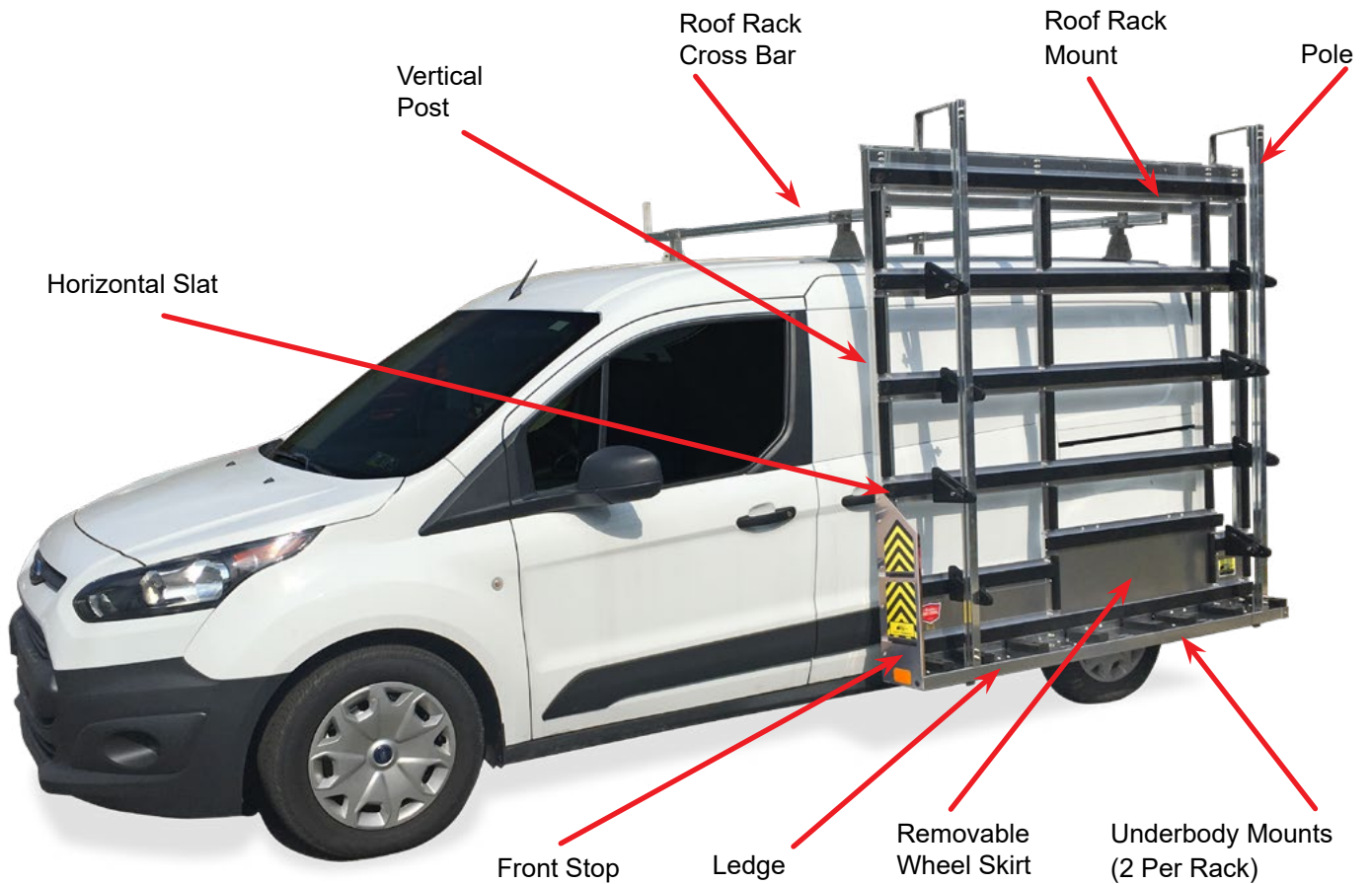
IMPORTANT

When installed, this glass rack and any other components must not alter or prevent vehicle compliance to existing state or federal standards. The finished rack and vehicle should comply with all vehicle manufacturer guidelines.



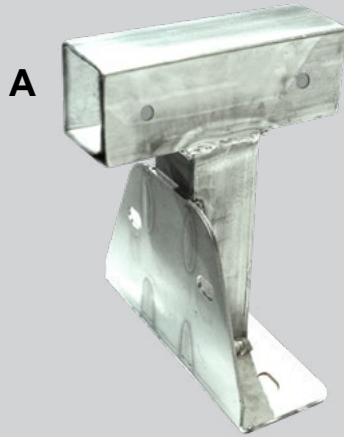
DO THIS BEFORE YOU START

Before beginning installation, please review this manual and locate each hardware bag and component of your rack. If anything is missing or you have questions please call (844) 364-4022. We will be happy to assist you.

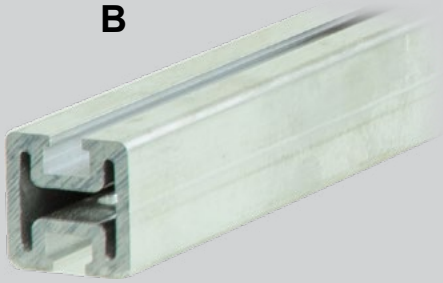
STEP 1: BECOME FAMILIAR WITH YOUR GLASS RACK**Tools Required for Installation**

- Wrenches: 7/16", 1/2", 9/16"
- Hex Socket: 7/16", 1/2", 9/16"
- Socket Wrench
- Cordless Electric or Pneumatic Impact Gun
- Caulk Gun
- Drill with 1/4", 5/16" and 3/8" Bits
- Vise-Grip-Style Clamps

STEP 1: LOCATE PARTS AND HARDWARE



A



B

ROOF RACK PARTS

A. Flat Top Roof Rack Mounts (4)

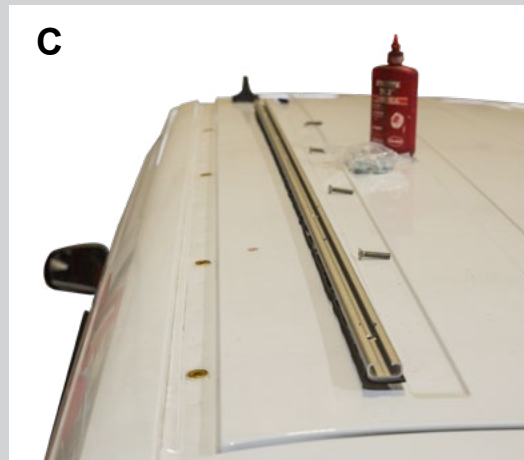
B. Roof Rack Cross Bars (2)
(Actual cross bar is 65" long)

C. Roof Track Kit

D. 4" Double Stud Plate (4)

E. V-8 Hardware Bag (not shown)

F. V-10 Hardware Bag (not shown)



C



D

V-8 Hardware Bag for roof mount rack

ITEM	SIZE	QTY
Hex Cap Screws Stainless	5/16" x 2-1/4"	8
USS Flat Washers Stainless	5/16"	16
Nylon Insert Locknut Plated	5/16"	8

Additional hardware bag on next page...

V-10 Hardware Bag for attaching rack to roof mounts

ITEM	SIZE	QTY
Hex Cap Screws Stainless	3/8" x 2-1/2"	2
USS Flat Washers Stainless	3/8"	4
Nylon Insert Locknut Plated	3/8"	2



Note: Hardware bags may include additional hardware that is not used for this installation.

REFERENCE PHOTO:

Roof rack crossbar attached to mounts.



STEP 2: INSTALL ROOF RACK ADAPTER TRACK

If the vehicle does not have an existing roof track, you will need to install one so the MyGlassTruck roof rack mounting system can be installed.

MyGlassTruck supplies a roof track from an outside vendor. Please follow the instructions enclosed with the roof track, some modifications (extra mounting bolts) may be needed to further strengthen the rack mount for a glass rack.

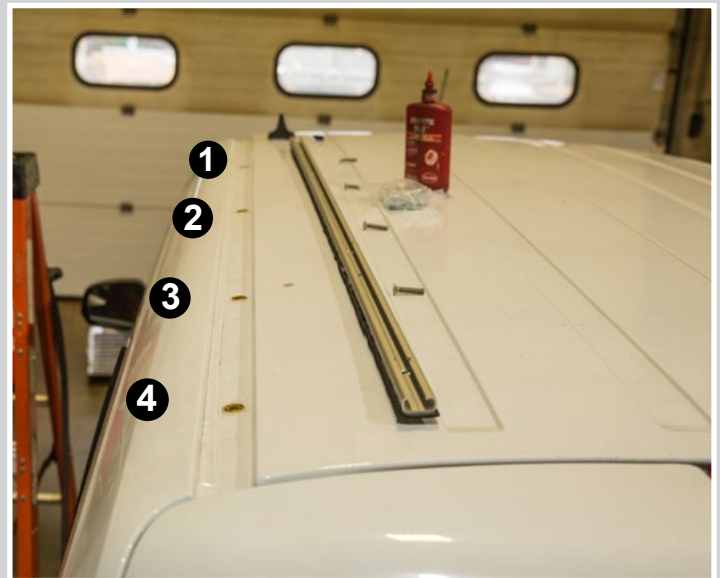
There are (4) different spots on the roof of the Ford Transit Connect to screw the roof rack track into (See photo below). Use the bolts and washers provided in the box to attach the roof rack track to the van's roof.



Please Note: The roof rack track will overhang past the factory supplied holes. Drilling additional holes in the roof **may void the warranty** of the vehicle, but should be done to make the track secure as possible.



Some locations on the roof or the underside of the vehicle will not be able to through-bolt. For those situations blind fasteners (a.k.a. Plus Nuts) are included. Please see page 19 for instructions.



STEP 3: INSTALL ROOF RACK

Reference Photo

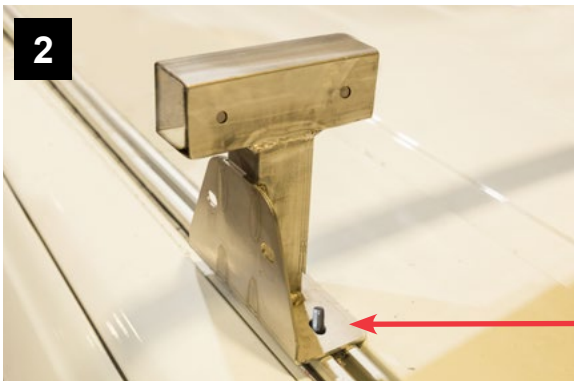


Completed Roof Rack Installation

Installing the MyGlassTruck Roof Rack



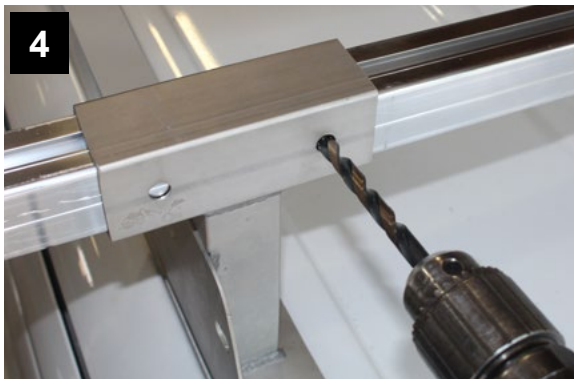
1. Slide two of double stud plates into the driver's side roof track and two into the passenger side roof track. Use the location of the roof rack mounts shown above as the approximate location for the double stud plates.



2. Mount the four roof rack mounts onto the bolts extending upward from the double stud plates by threading on the washer and lock nuts. Hand tighten only.



3. Slide the aluminum crossbars through the top of the roof rack mount so that they protrude evenly on both sides of the van. Make sure that the crossbars are perpendicular to the track.



4. Drill holes through the crossbars using the pre-drilled holes in the roof rack mounts as a guide. Bolt crossbars and mounts together using 5/16" x 2-1/4" bolts, nuts, and washers (V-8 Hardware Kit).



5. Tighten ALL of the bolts on the mounts and crossbars.

STEP 1: ATTACH GLASS RACK TO ROOF RACK CROSSBARS



1. Hang the rack on the ends of the roof rack crossbars as shown by using the mounting angle that's attached to the back of the glass rack (near the top). Confirm the rack is at the correct elevation for your vehicle.

Clamp to hold in place.



IMPORTANT: CHECK THAT RACK DOES NOT INTERFERE WITH ACCESS TO FUEL OPENING AND FRONT DOOR.



2. Drill a 3/8" hole through the mounting angle and roof rack crossbars. Be sure to drill through the center.



3. Bolt the rack's mounting angle to the crossbars using 3/8" x 2-1/2" bolts, washers and nuts. (Bag V-10 Hardware).



4. Tighten all bolts.

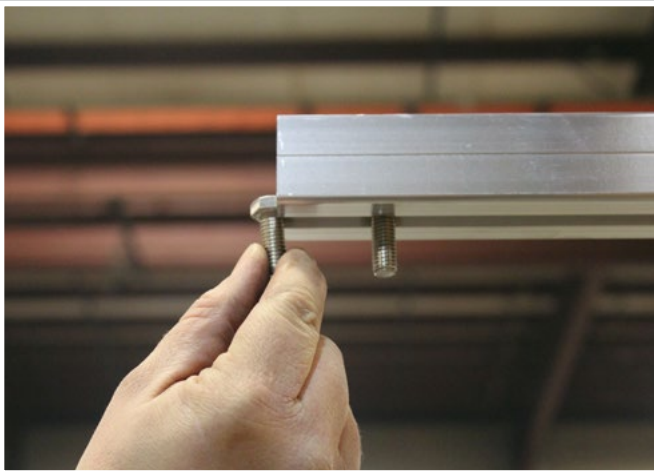


IT IS IMPORTANT TO RE-TIGHTEN ALL BOLTS ON THE ROOF RACK AND MOUNTING ANGLE

STEP 1: ADD END HOOKS TO ROOF RACK CROSSBARS**V-11 Hardware Bag**

ITEM	SIZE	QTY
L-Shaped End Hooks		2
Hex Cap Screw Stainless	3/8" x 1"	4
USS Flat Washer Stainless	3/8"	4
Nylock Nut	3/8"	4

Note: Hardware bags may include additional hardware that is not used for this installation.



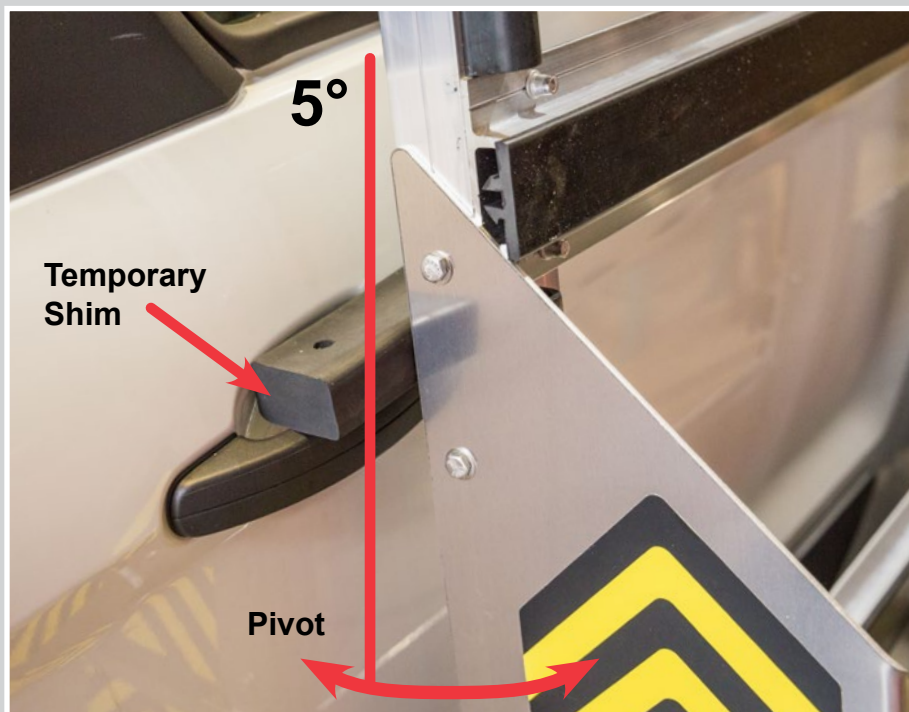
Add the end hooks to each roof rack crossbar. On the non-rack side of the van, slide the heads of two 3/8" x 1" hex cap screws into the channel on the underside of the roof rack crossbar. With the longer "ladder keeper" portion of the end hook facing upward, thread the screws through the end-hook's two pre-drilled holes. Slide a 3/8" washer onto each bolt and secure each end hook with a 3/8" lock nut.

STEP 1: PIVOT AND SHIM RACK

Set the vertical angle of the glass rack by pivoting its bottom in or out. **The recommended angle is 5 degrees.** Be sure to keep the rack as close to the vehicle as possible. But, also try to keep at least 1/2" of space between the rack and the van. If the rack and van touch, place rubber or foam padding between them.

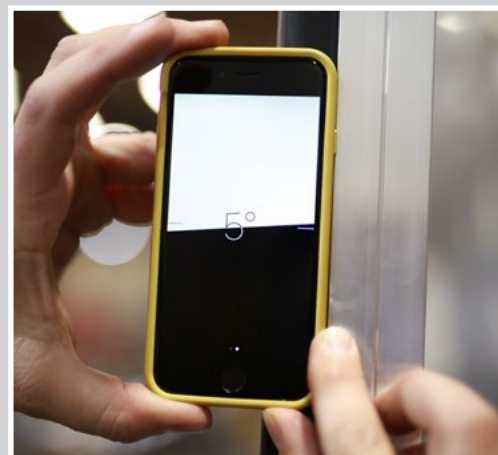
The Recommended Rack Angle is 5 Degrees

Add temporary shims between each vertical post and the van's side to set and hold angle. Remove shims after rack is attached to underbody mounts.



REMEMBER THE RACK(S) AND VEHICLE MUST NOT EXCEED THE LEGAL OVERALL WIDTH OF 102"

Tip: Download an app for your smartphone to quickly check the recommended five degree angle.



STEP 1: IDENTIFY PARTS AND LOCATION

Before beginning this portion of your installation locate and review all parts and hardware bags. Please call (844) 364-4022 if anything is missing or you have questions.

UNDERBODY MOUNTS PARTS

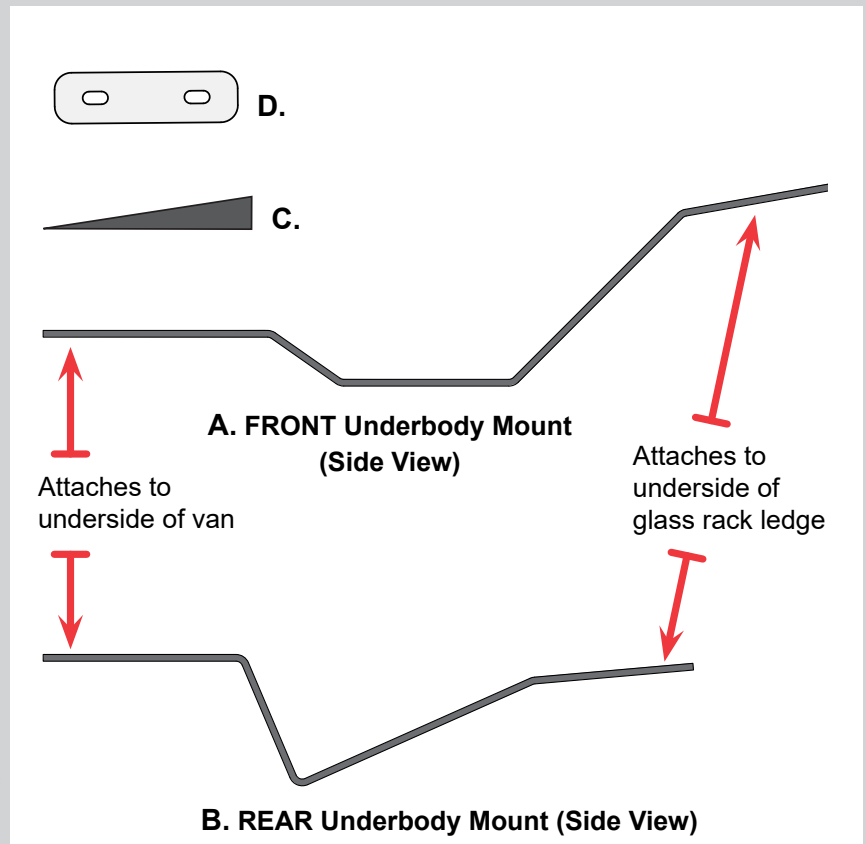
- A. Front Underbody Mount (1)
- B. Rear Underbody Mount (1)
- C. Rubber Wedges (2)
- D. Aluminum Wear Plate (2)
- E. Hardware Bag (Not Shown)

Approximate Location of Underbody Mounts



FRONT

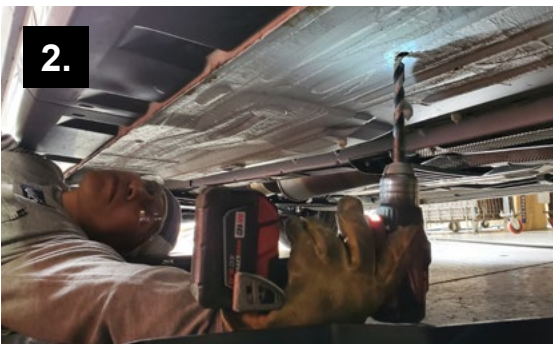
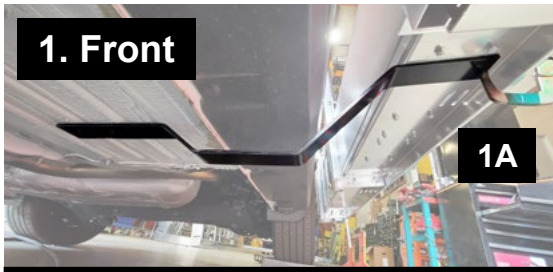
REAR



Hardware Bag for Under-Body Mounts

ITEM	SIZE	QTY
Hex Cap Screw Stainless	3/8" x 1-1/2"	4
Plus Nut	5/16"	4
Hex Cap Screw Stainless	5/16"-18, 1.5"	4
Flat Washer	5/16"	4
Washer	3/8"	12
Locknut	3/8"	6
Lock Washer	5/16"	4

STEP 2: ATTACH MOUNTS TO UNDERSIDE OF VEHICLE



IMPORTANT: Do not interfere with any components on the van's under-side when attaching the underbody mounts, including brake lines, fuel tanks, fuel hoses, wiring, or suspension.

1. The underbody mounts consist of $\frac{1}{4}$ " steel flat bars contoured to go from underneath your Transit Connect to the underside of the glass rack's bottom ledge. The longer bracket with 4 bends is the front mount and the shorter with 3 bends is for the rear. See A and B in drawing on previous page if unsure.

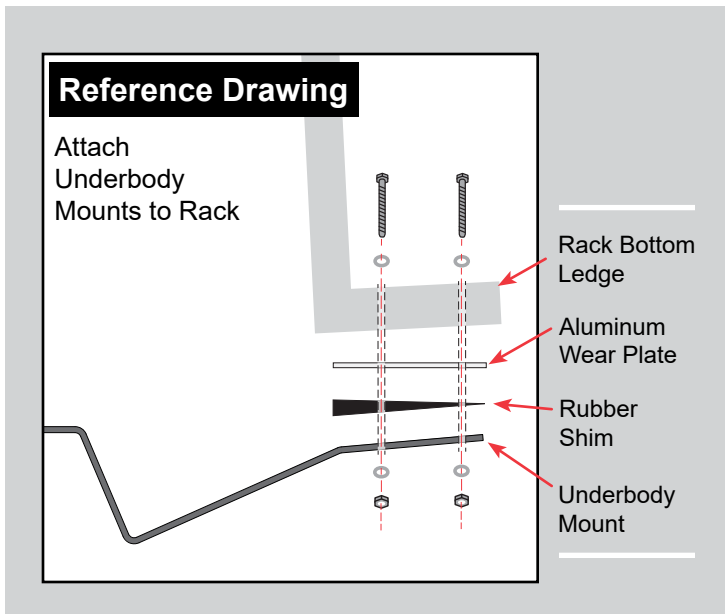
The front underbody mount will be located in front of the rear wheels as close to the front of the rack as possible. The rear underbody mount will be located behind the rear wheels. If possible, when positioning the mounts, angle them slightly towards each other rather than parallel to each other. This will increase the stability of the rack.

- 1A. Clamp the mounts to the rack's bottom ledge to **dry-fit** where it will attach to the underside of the vehicle and the rack. Make marks on the underbody mount where the two bolts will thread into the underside of the vehicle.
2. Remove the mount and drill $\frac{5}{16}$ " holes where you marked. Re-attach the mount and use the holes you drilled as a template to mark the vehicle's underside. Remove the underbody mount once more and drill two $\frac{1}{2}$ " holes in the vehicles underside.
3. The Transit Connect's underside is smooth. This makes blind fasteners (a.k.a. Plus Nuts) necessary in some locations. Insert the $\frac{5}{16}$ " blind fasteners (a.k.a. Plus Nuts) and tighten them per the instructions on page 19.
4. Place the underbody mount back under the vehicle and secure with $\frac{5}{16}$ " bolts, washers and lock washers. Repeat this procedure for the rear mount.



IMPORTANT: Be sure to use a minimum of two bolts to attach each underbody mount to the van's underside.

STEP 1: ATTACH UNDERBODY MOUNTS TO GLASS RACK



When you secure the glass rack to the underbody mounts you can adjust how the rack sits on the vehicle. Keep the same pitch at each underbody mount or the rack could be twisted.

Also, make sure that the rack is set parallel to the body, and not angled in or out causing it to “scoop” air and exert force on your glass which could push it off the rack while in transit.

See Reference Drawing: Position the aluminum wear plate under the rack's bottom ledge and above the end of the underbody mount that extends beyond the vans wall to the underside of the glass rack's bottom ledge. If there is a gap between the under mount and the ledge add the provided rubber shim to bridge the gap.



1. Clamp the rack's bottom ledge, the wear plate, the shim and underbody mount together and drill two holes through them. Do not drill through rubber pads on ledge.



Important! Be careful not to drill through the rubber pads on the glass rack's bottom ledge.



2. Using the 3/8" x 1-1/2" bolts with washers bolt the ledge, the wear plate, the shim and underbody mount together.



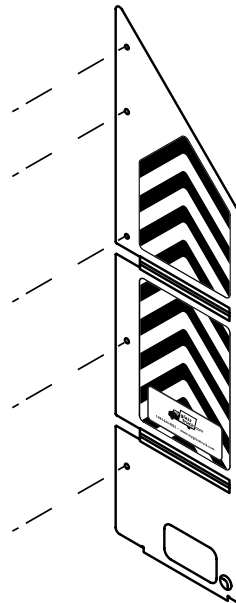
Underbody mounts may have to be modified. If you encounter obstacles or are unsure call (844) 364-4022

STEP 1: LOCATE PARTS AND HARDWARE**V-12 Hardware Bag for Front Stop**

ITEM	SIZE	QTY
Hex Cap Screw	1/4" x 2-1/2"	3
USS Flat Washer	1/4"	6
Nylon Insert Locknut	1/4"	3

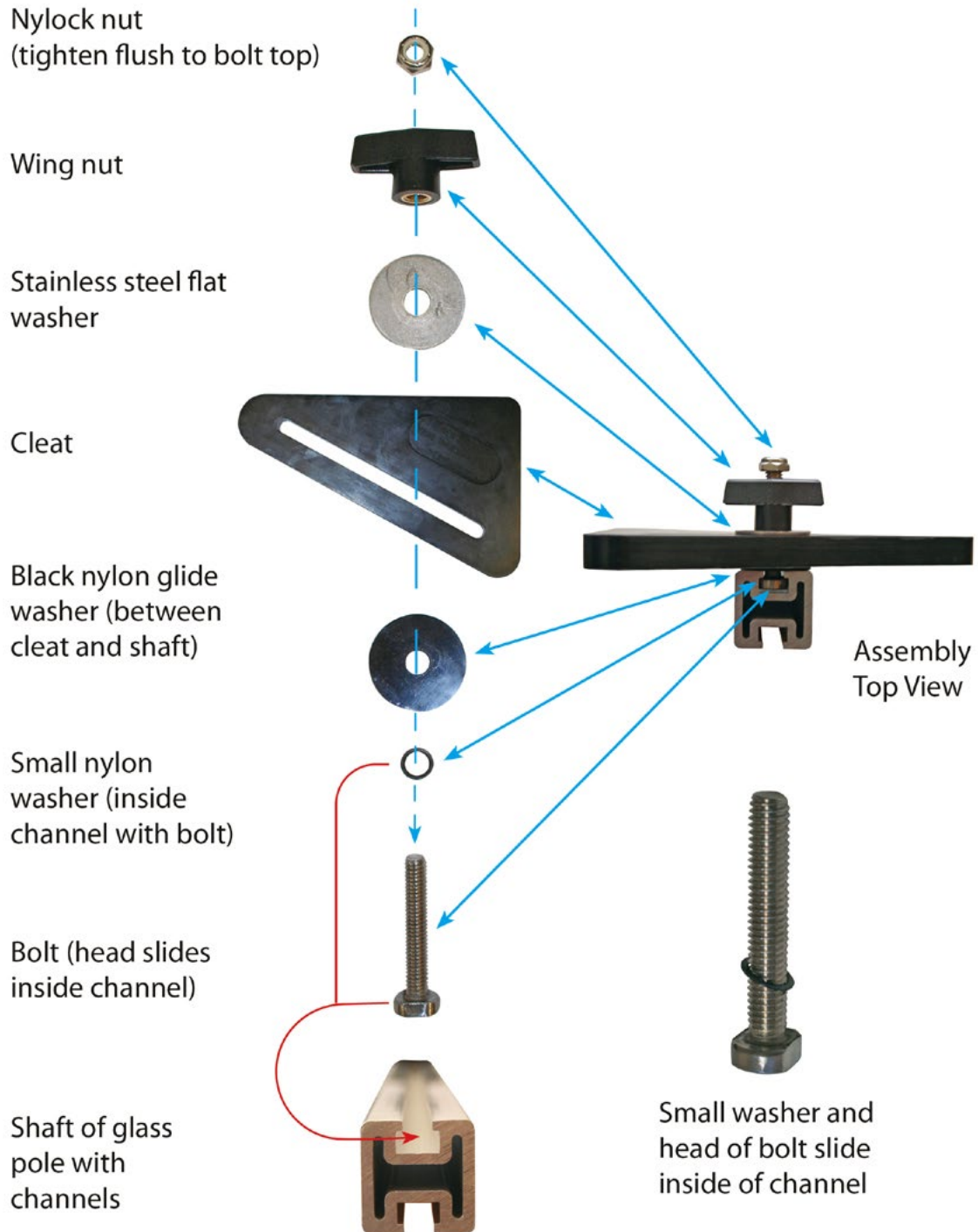
STEP 2: INSTALL FRONT STOP

The glass rack front stop is shipped detached from the rack. To attach, bolt the stop directly to the front of the glass rack through the pre-drilled holes using the 2-1/2" x 1/4" bolts provided.

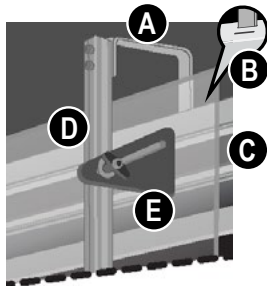


STEP 1: POLE HARDWARE, CLEATS AND COMPONENTS

Slide the head of a stainless steel bolt and the small nylon washer down the pole's channel. Assemble hardware and cleat as shown. Slide three cleats onto one side of the pole and two onto the other side.



Glass Pole Instructions



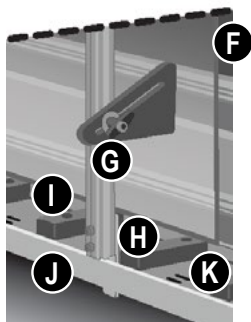
A. Pole Top Section

B. Top Slots - Along top of header rail

C. Rubber Padding

D. Pole

E. Cleat



F. Glass

G. Wing-Nut

H. Pole Bottom Section

I. Bottom Pad

J. Glass Rack Ledge

K. Bottom Slots

1. Remove poles from rack before loading glass.
2. Ensure load space is clean and clear of debris.
3. Ensure rubber padding is in good condition.
4. Place glass on rack flat against rubber padding. Distribute the load evenly on both sides of vehicle (if equipped).
5. Inspect poles, cleats and wing-nut hardware to ensure it's intact and in proper working order.
6. Place all poles onto rack over top of glass. The bottom and top section of poles must be securely placed in slots located at top and bottom of rack.
7. Push cleats flat against glass, then tighten wing-nuts by hand. Cleats must be firmly against glass so no movement of glass is possible.
8. On long trips, periodically check wing-nuts for tightness.



WARNING

Shifting cargo due to improper loading can result in sudden loss of control of vehicle, cargo or glass coming off of rack, or glass breakage. This can lead to death or serious injury. You must:

- Make certain weight of load plus rack weight does not exceed vans weight capacity (GVWR - Gross Vehicle Weight Rating).
- Evenly distribute load on the driver and passenger side of vehicle (if equipped with two racks).
- Consider adjusting the contents inside the vehicle to account for the weight on the rack.
- Properly secure load to rack using glass poles and/or straps. Inspect and test all load securement devices before each use.

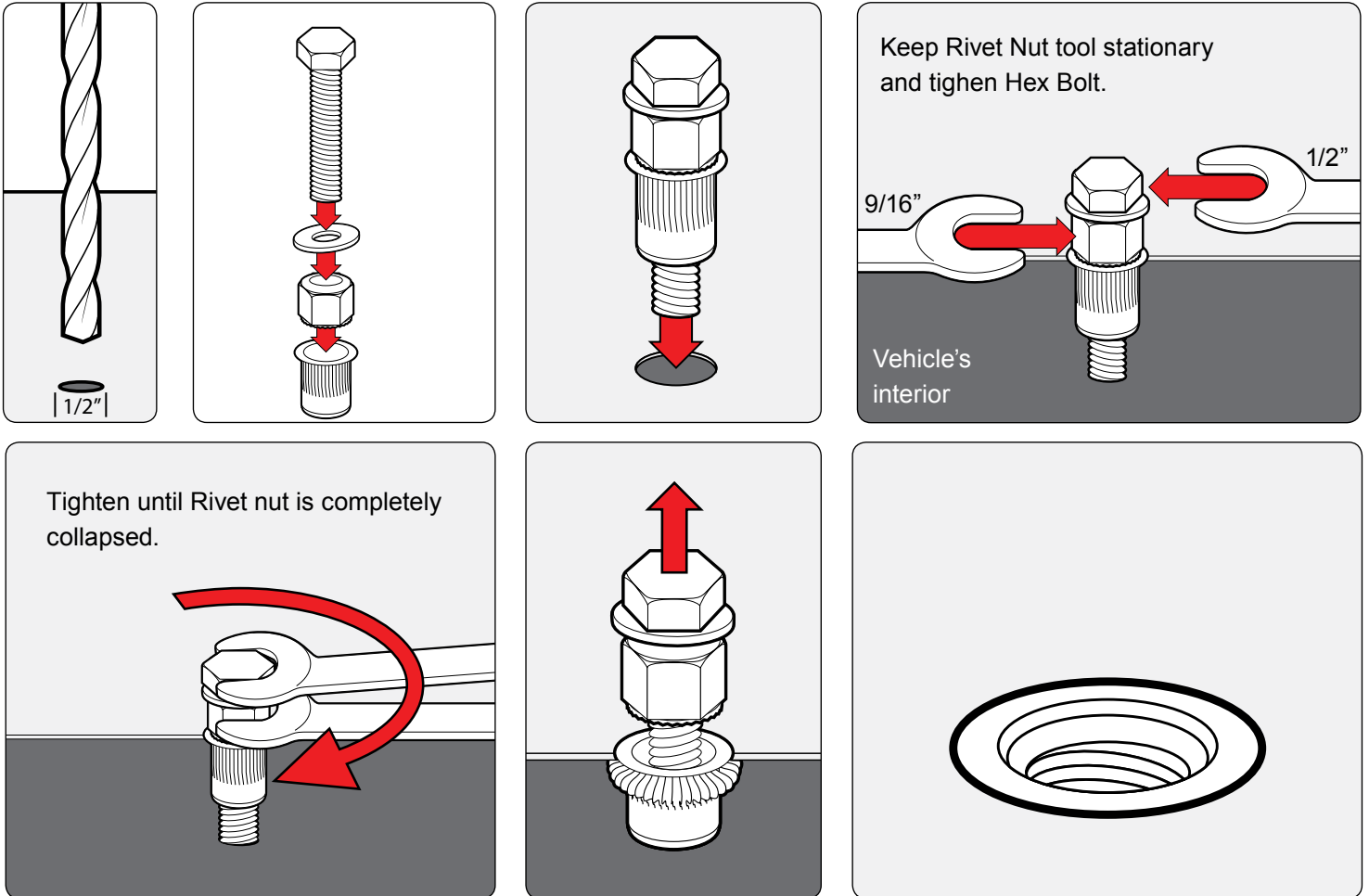


WARNING

If rack is E-Track equipped, only use load securement products compatible with E-Track.

Do not use damaged or loose tie down rings, straps or track. They can fail or break, allowing cargo to become loose resulting in death or serious injury.

Refer to www.fmcsa.dot.gov for regulations regarding cargo securement rules

How to Install Blind Fasteners (a.k.a. Plus Nuts):

Final Inspection Checklist:

- Roof rack is attached to van properly and all bolts are tight
- All bolts are tight where glass rack attaches to roof rack
- All underbody mounts are installed properly and tight
- All bolts securing rack ledge to underbody mounts are tight
- Wheel skirt is bolted on properly
- Front stop is securely bolted in place
- Cleats are attached properly to all poles

For Service, Parts and Accessories:

Phone: (844) 364-4022

E-mail: sales@myglasstruck.com

To preview, or order parts
please visit dcipress.com

DCI*X***PRESS**