



## IR SYSTEM

The IR System comprises of the STARBoard, Extension Tray and IR Shield to form a complete, clinically engineered solution for left side radial access.

## IR SYSTEM

The IR System comprises of the STARBoard, Extension Tray and IR Shield to form a complete, clinically engineered solution for left side radial access.



The IR System facilitates ease of radial access during Interventional Radiology procedures, while offering optimal patient comfort and superior operator protection.



Designed to work with any radiology procedure table, the IR System is quick to install and adjust to variations in patient size. Set-up is achieved in seconds and no consumable components are required.



### STARBoard

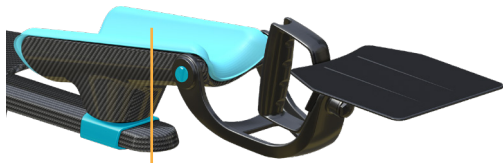
The STARBoard allows for rapid, effective presentation and procedural ease when considering both distal and proximal radial access.

A key function of the STARBoard is its ability to present the patient's wrist in the hyper-extended position whilst access is achieved, then simply return it to a more relaxed, medially-rotated position, for the duration of the procedure, allowing greater patient comfort.

The fully articulated arm support conforms to all patient sizes and physiologies in any arm position without the need to release the arm for adjustment. This allows the operator to position themselves where they would like during the procedure, with full patient comfort.

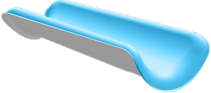
With its adjustable cone friction bearings and slider joints, parts can rotate and slide yet remain in place in their set positions.

Crafted in carbon fibre for superior strength, radiolucency and durability, the STARBoard is extremely light weight and compact.



### Arm Support Pad

The Arm Support Pad is a custom designed solution for patient pressure management. Made with a viscoelastic memory-foam core, the Arm Support Pad is removable, durable, easy to clean and more radiolucent compared to commonly used gel pads.



### Extension Tray

The clip-on Extension Tray transitions your guide wire from the radial access site to your draped trolley and also provides a stable work surface for wire manipulation.



### IR Shield 0.5mm Lead (Pb)

The vertical Shield provides X-Ray scatter radiation protection.



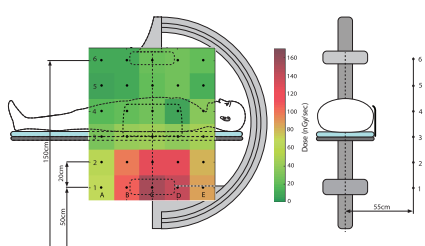
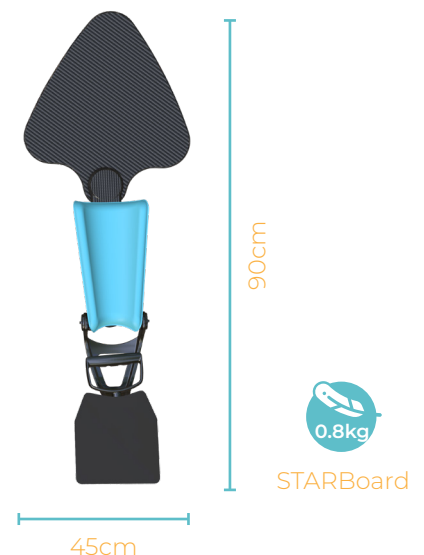
Full  
Scatter  
Radiation  
Report

[adeptmedicaltraining.com/scatterradiation](https://adeptmedicaltraining.com/scatterradiation)

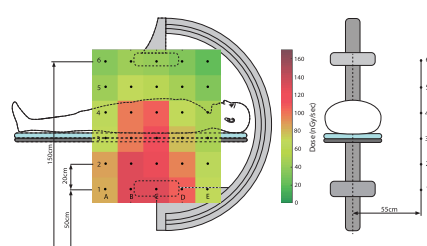
## Key Features and Benefits

- Quick set-up
- Easy positioning
- Patient comfort
- Scatter radiation shielding
- Fits all tables
- Radiolucent

## Specifications



Zero Gantry Tilt Operator Dose  
- With Shield



Zero Gantry Tilt Operator Dose  
- No Shield

## Applications

### Interventional Radiology

- Vascular Procedures via the Radial Approach

### Interventional Cardiology

- Vascular Procedures via the Radial Approach



### Fields you can use this device



Interventional  
Radiology



Peripheral  
Intervention



#### Manufacturer

Adept Medical Ltd  
2-6 McDonald St,  
Morningside  
Auckland 1025, New Zealand