

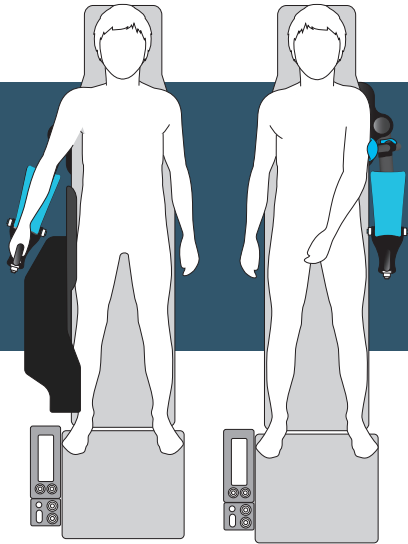


STARSYSTEM

The STARSsystem comprises of the STARBoard, STARSsupport and STARTable to form a complete, clinically engineered solution for right side radial access.

STARSYSTEM

The STARSsystem comprises of the STARBoard, STARSsupport and STARTable to form a complete, clinically engineered solution for right side radial access.



The STARSsystem facilitates ease of radial access during Interventional Cardiology procedures, while enhancing the operational environment.



Designed to work with any cardiac or radiology procedure table, the STARSsystem is quick to install and adjust to variations in patient size. Set-up is achieved in seconds with no consumable components required.



STARBoard and STARSsupport



STARBoard and STARTable

Distal and Proximal Radial Access



STARBoard

The STARBoard allows for rapid, effective presentation and procedural ease when considering both distal and proximal radial access.

The key function of the STARBoard is its ability to present the patients wrist in the extended position whilst access is achieved, then simply return it to a more relaxed, medially-rotated position, with the arm at their side for the duration of the procedure. Adjustments can be made at any point during the procedure beneath the sterile drapes.



Crafted in carbon fibre for superior strength, radiolucency and durability, the STARBoard is extremely light weight and compact.

The unique, one-piece, "foldaway" design makes it easy for nursing staff to handle and takes up minimal storage space.

Arm Support Pad

The Arm Support Pad is a custom designed solution for patient pressure management. Made with a viscoelastic memory-foam core, the Arm Support Pad is removable, durable, easy to clean and more radiolucent compared to commonly used gel pads.



STARTable

The STARTable provides clinicians with an adjustable work surface and protection from scatter radiation.



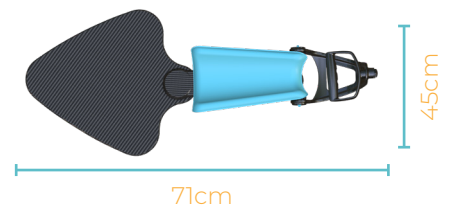
Full
Scatter
Radiation
Report

adeptmedicaltraining.com/scatterradiation

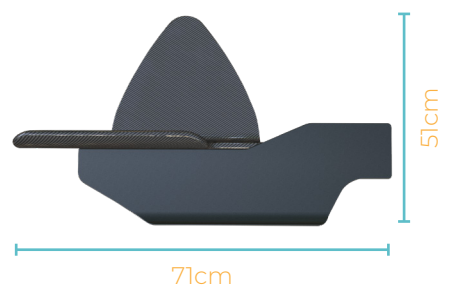
Key Features and Benefits

- Clinically designed
- Scatter radiation shielding
- Fits all tables
- Quick set-up
- Easy positioning
- Crafted from Carbon Fibre
- Ergonomic surface

Specifications



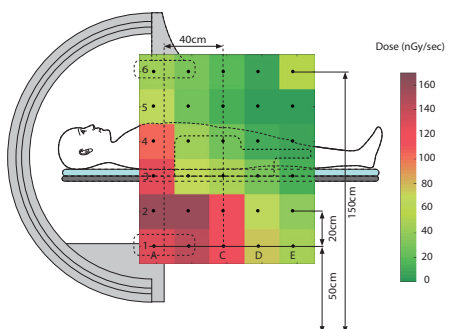
0.8kg STARBoard



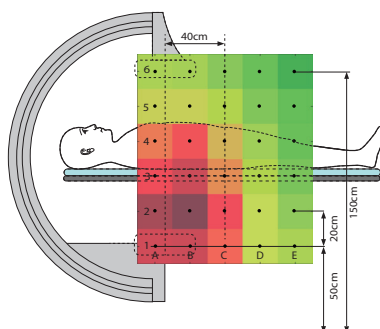
2.3kg STARTable



0.2kg STARSupport



With STARTable



Without STARTable



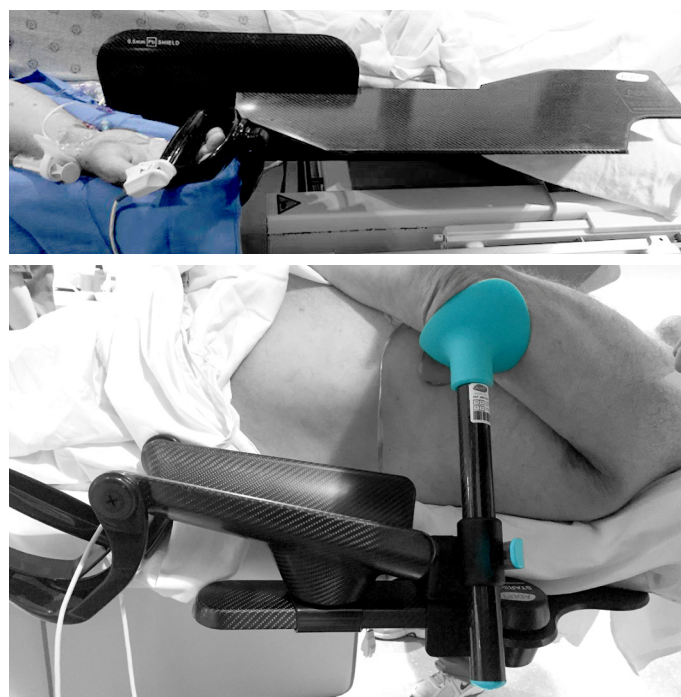
STARSupport

STARSupport connects to the STARBoard after radial access is gained facilitating left arm procedures for superior patient comfort.

Applications

Interventional Radiology

- Vascular Procedures via the Radial Approach



Fields you can use this device



Interventional
Neuroradiology



Interventional
Cardiology



Manufacturer

Adept Medical Ltd
2-6 McDonald St,
Morningside
Auckland 1025, New Zealand