



BORTANA EV

ZERO EMISSIONS - LOW HEAT - LONGEVITY - GAME CHANGING



With military DNA, a strong recognised drivetrain and the highest levels of corrosion resistance, the Bortana EV is an off-road 4X4 with outstanding agility and versatility.



TECHNICAL SPECIFICATIONS - BETA PHASE FLEET

BODY

Single Cab - 2 Passengers
Chassis - Fully Sealed
Tray - Power Coated Steel Tray - Galvanised on request

MOTOR

Model - Danfoss Pro 160
Emissions Control System - NA - Zero Emission Vehicle
Supply - Brushless DC
Power - 90kW (160kW Peak) Torque - 170Nm (350Nm Peak) from 0 RPM

ELECTRICAL SYSTEM + CHARGING

High Voltage Battery - 53kWh - 3ME Technology BladeVolt 350v NMC
Onboard charging 1 - 25kW - 415V (AC)
Onboard Charging 2 - 25kW - 1000V (AC)
Off-board Charging - CCS2 up to 80kW

TRANSFER CASE

Model - Atlas 4 - Manual 1:1 - 2:1

CHASSIS

Type - Ladder chassis

SUSPENSION

Front - Rigid Axle with Coil Springs
Rear - Rigid Axle with Leaf Springs
Front and Rear Shock Absorbers - Oil Shock Absorbers

DRIVE AXLE

Front Axle - Agrale 8.9, 'Power Lock' - Floating Rigid Axle - Open Type 4.56:1
Rear Axle - Dana 70 - Floating Rigid Axle - Limited Slip - 'Power Lock' 4.56:1

STEERING

Type - Hydraulic with Electric Pump

WHEELS + TYRES

Dimensions - 8.00 x 16" - 8 Holes LT STR 285/75R16

BRAKES

Service Brake Type - Disc Front and Rear
Drive - Hydraulic servo-assisted with ABS and EBD
Park Brake Type - Electric Park Brake Applied to Rear Discs

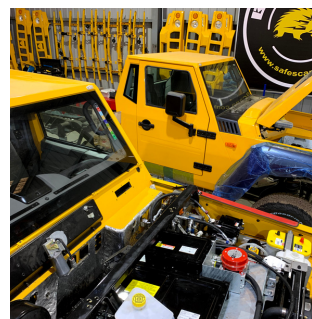
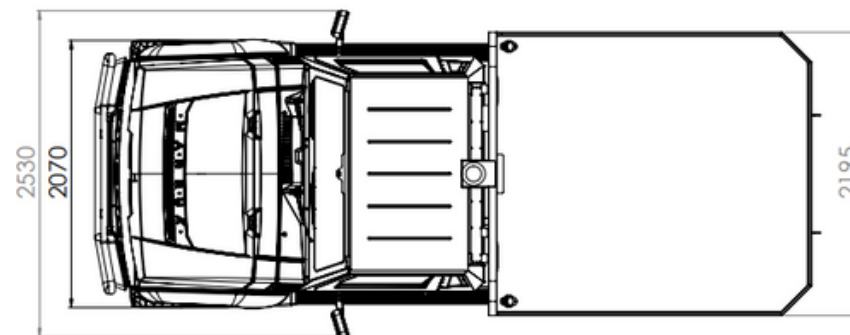
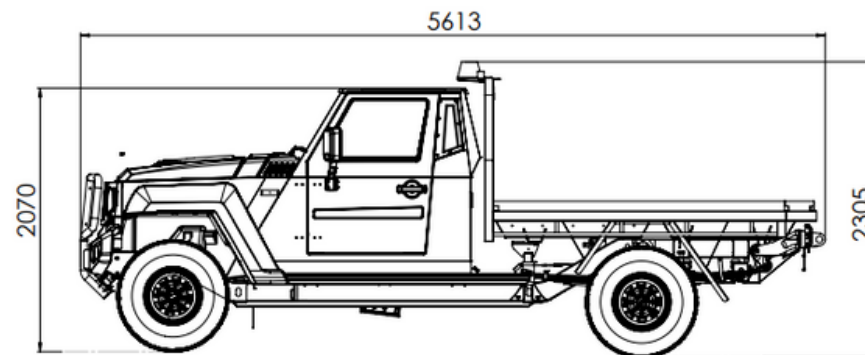
DIMENSIONS

Wheel Base - 3530mm
Total Length - 5613mm
Width - Mirror to Mirror - 2530mm
Height - 2070mm (No Tray) and 2305 (Tray with Beacon)
Ground Clearance - Front Axle 260mm - Rear Axle 230mm
Tread - Front 1626mm - Rear 1786mm
Approach Angle - 54degrees Departure Angle 32degrees
Side Tilt - 30degrees

WEIGHTS AND CAPACITIES

Total Gross Weight - 5,700kgs
Tare - 3,550kgs
Payload - 2,150kgs

BORTANA EV



BORTANAEV.COM

(+61) 3 5447 0041

DISCLAIMER

The specifications listed are subject to change and will vary for production models