

Preschool Development Grant Renewal



The Preschool Development Grant Birth through Five seeks to:

- ▶ Support states in their efforts to analyze the landscape of their early learning and care (ELC) mixed delivery system and implement changes to the system that maximize availability of high-quality ELC options for high-impact families;
- ▶ Strengthen administrative infrastructure;
- ▶ Improve state-level early learning and care funding efficiencies;
- ▶ And improve the quality of care.



Vision & Mission

- ▶ California's early childhood system delivers on the promise of a California for All Kids.
- ▶ Experiences meaning the activities or events, environment, exposure to the information (e.g., learning a new language), and materials.



Goals: Build, Maximize, Develop, and Increase

- ▶ Build cross system capacity and streamline governance at the state and local level.
- ▶ Maximize parent and family knowledge, elevate parent voices, and strengthen parent connections to ELC and other supportive services.
- ▶ Develop a unified system for workforce professional development that employs consistent standards and offers aligned, stackable, competency-based, credit bearing professional development.
- ▶ Increase the supply and quality of ELC opportunities by redesigning and aligning quality standards, professional development systems and monitoring processes.



Contract Deliverables

- ▶ Support the development of Regional Resource & Referral Hubs to convene PDG-R Services.
- ▶ Design Early Childhood (EC) Cafés model to increase home visitors (HV), family, friend and neighbor (FFN) and family child care providers (FCC) implementation.
- ▶ Expand Parent Café model to include Zero to Three Growing Brain
- ▶ Coordinate with Quality Counts California.
- ▶ Coordinate with Tribal and California County Superintendents of Educational Services Association (CCESA).
- ▶ Design and implement parent feedback sessions (Parent Consortia).

Statewide PDG-R Coordination & Capacity Building:

The Child Care Resource Center (CCRC) has been serving California children, families, and early childhood educators since 1976. In the PDG-R grant, CCRC serves as the Resource & Referral statewide coordinator, and facilitator of training and shared planning to maximize efficiencies and collaboration within each region. We will build out tribal connections and coordinate consistent statewide R&R messaging.

CCRC will provide individualized marketing and communications training and technical assistance to R&R agencies. We will support information and resource sharing, and will work to further identify challenges and opportunities to strengthen the ELC system to better support children's development, family engagement, and community connections.

Parent & Caregiver Cafés:

Parent Cafés are an opportunity for parents and caregivers to come together to engage in meaningful, reflective conversations that promote collaboration, peer to peer engagement, and empowerment. The R&R Hubs will also engage with their local communities to support parent engagement and expand to include partnerships to share and connect families with resources.

Parent Feedback Sessions:

CCRC will coordinate multiple feedback sessions to collect information from a broad representation of parents and caregivers. These small group sessions afford attendees a safe space to discuss family needs, availability of services, and areas where services are either not available or not meeting family needs. Once analyzed, the information will be shared with stakeholders and decision makers via multiple platforms (i.e., print, video) to identify opportunities to improve our early learning systems.



CCRC TEAM

Michael Olenick Ph.D.

President & CEO

Heather Edwards

Executive Administrator

Donna Sneeringer

Chief Strategic Officer

Margaret Morneau

Administrative Assistant

Susan Savage

Research Director

Andria Zavrel

Research Manager

Susan Montalvo

Communications Director

Breana Marquez

Community Engagement Facilitator

Bill Swindle

Communications Manager

Eileen Friscia

Resource & Referral Director

Elizabeth Melendrez

Statewide PDG-R (R&R) Manager

Darcy Edwards

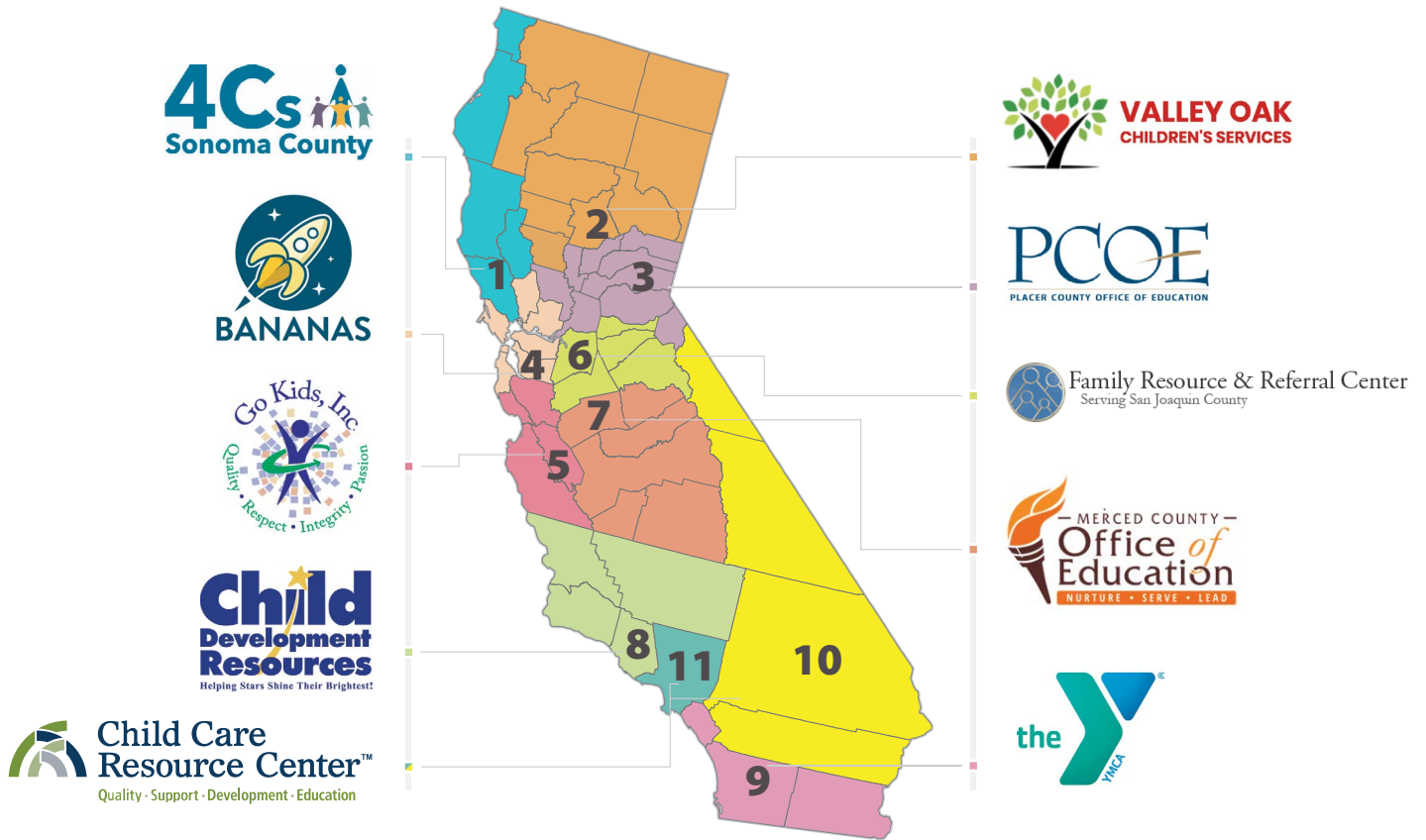
PDG-R Curriculum Administrator

Teresa Olin

PDG-R Curriculum Administrator

Mindy Hernandez

PDG-R Program Assistant



| REGION | COUNTY | HUB LEADS |
|-----------|----------------|---|
| Region 01 | Sonoma | Community Child Care Council of Sonoma County |
| Region 02 | Butte | Valley Oak Children's Services |
| Region 03 | Placer | Placer County Office of Education |
| Region 04 | Alameda | BANANAS |
| Region 05 | San Benito | Go Kids, Inc. |
| Region 06 | San Joaquin | Family Resource & Referral Center |
| Region 07 | Merced | A.C.C.E.S.S. Child Care Resource and Referral |
| Region 08 | Ventura | Child Development Resources of Ventura County |
| Region 09 | San Diego | YMCA Child Care Resource Service |
| Region 10 | San Bernardino | Child Care Resource Center |
| Region 11 | Los Angeles | Child Care Resource Center |