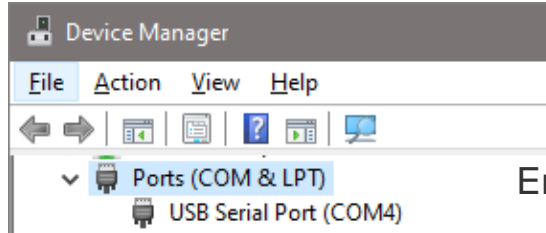
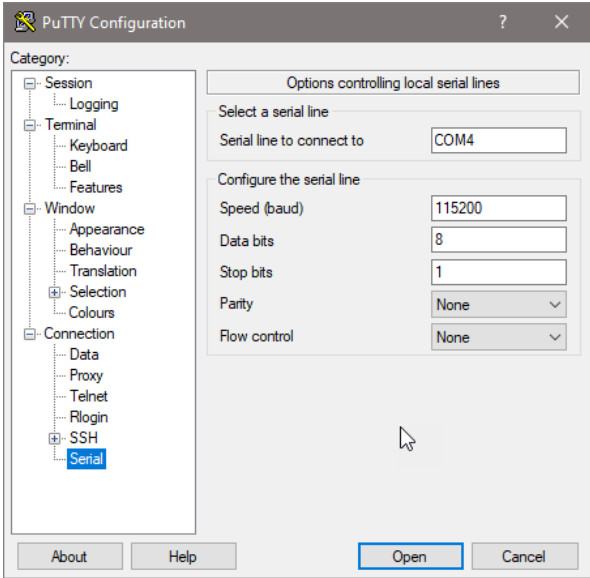


## Microsoft Windows 10

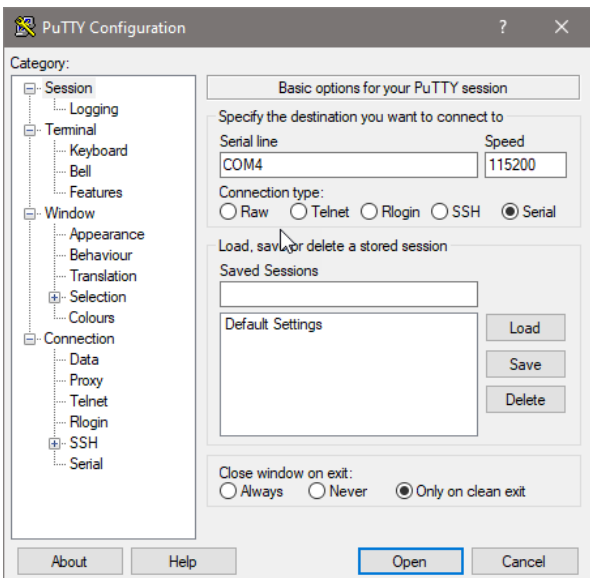


Ensure your computer has PuTTY downloaded (download at [www.putty.org](http://www.putty.org))

Ensure you have a Blue USB-to-Serial Port Console Cable

Ensure your computer also has the drivers installed. The Windows Driver is available as a direct download from the manufacturer ( [FTDICHIP.COM](http://FTDICHIP.COM) )

- Plug the serial cable into the console port of the gateway and connect to a computer
- Open PuTTY
- PuTTY configuration:
  - Select "Serial" as the Connection type
  - 115200 baud
  - No parity
  - 8 data bits
  - 1 stop bit
  - No hardware flow control
  - Input the serial line defined by your device - COM"X"
  - Open



To locate the COM Port: Device Manager > Ports (COM & LPT) > USB Serial Port (COM"X")

Tip: You can type “help” after any command to see the available options.

```
Please press Enter to activate this console.
Type 'help' for help. You need to reboot to put configuration changes into effect.
> help
Documented commands (type help <topic>):
=====
configure dhcp dig exit help login ping reboot show traceroute
> configure
>CONFIGURE> help
Documented commands (type help <topic>):
=====
exit help password primaryWAN secondaryWAN
>CONFIGURE> primaryWAN
>CONFIGURE>PRIMARY-WAN> help

Documented commands (type help <topic>):
=====
exit help ip
```

Tip: To set the AUX WAN use “secondaryWAN”

Tip: “mode dhcp” will wipe the Static IP on reboot.

Tip: Run “show config” to check your IP configuration

```

Please press Enter to activate this console.
Type 'help' for help. You need to reboot to put configuration changes into effect.
> help
Documented commands (type help <topic>):
=====
configure dhcp dig exit help login ping reboot show traceroute
> configure
>CONFIGURE> help
Documented commands (type help <topic>):
=====
exit help password primaryWAN secondaryWAN
>CONFIGURE> primaryWAN
>CONFIGURE>PRIMARY-WAN> help

Documented commands (type help <topic>):
=====
exit help ip

> configure
>CONFIGURE> primaryWAN

>CONFIGURE>PRIMARY-WAN> ip

>CONFIGURE>PRIMARY-WAN>IP> mode static
>CONFIGURE>PRIMARY-WAN>IP> address XXX.XXX.XXX.XXX
primary>ip>address successfully set to:XXX.XXX.XXX.XXX
>CONFIGURE>PRIMARY-WAN>IP> netmask XXX.XXX.XXX.XXX
primary>ip>netmask successfully set to:XXX.XXX.XXX.XXX
>CONFIGURE>PRIMARY-WAN>IP> gateway XXX.XXX.XXX.XXX
primary>ip>gateway successfully set to:XXX.XXX.XXX.XXX
>CONFIGURE>PRIMARY-WAN>IP> exit
>CONFIGURE>PRIMARY-WAN> exit
>CONFIGURE> exit
  
```

Tip: Run “show config” to view the subnet configuration of the Gateway.

```
> show config
{
  "secondary-ip": {
    "netmask": "0.0.0.0",
    "address": "0.0.0.0",
    "gateway": "0.0.0.0",
    "mode": "dhcp"
  },
  "ip": {
    "netmask": "XXX.XXX.XXX.XXX",
    "address": "XX.XXX.XX.XX",
    "gateway": "XX.XXX.XX.X
    "mode": "static"
  },
  "password": null
}
```