

“Folder redirection” GPO

When a user logs into a Windows domain member using the folder redirection GPO, a copy of the folder is downloaded from the server. It aids in the persistence of folders for multiple users.

1. Install RSAT in Windows 10

- Log in to Windows 10 with an administrator account.
- Open the Settings app by pressing WIN+I.
- Click Apps in the Settings app.
- On the Apps & features screen, click Manage optional features.
- On the Manage optional features screen, click + Add a feature.
- On the Add a feature screen, scroll down the list of available features until you find RSAT. The tools are installed individually, so select the one you want to add and then click Install.

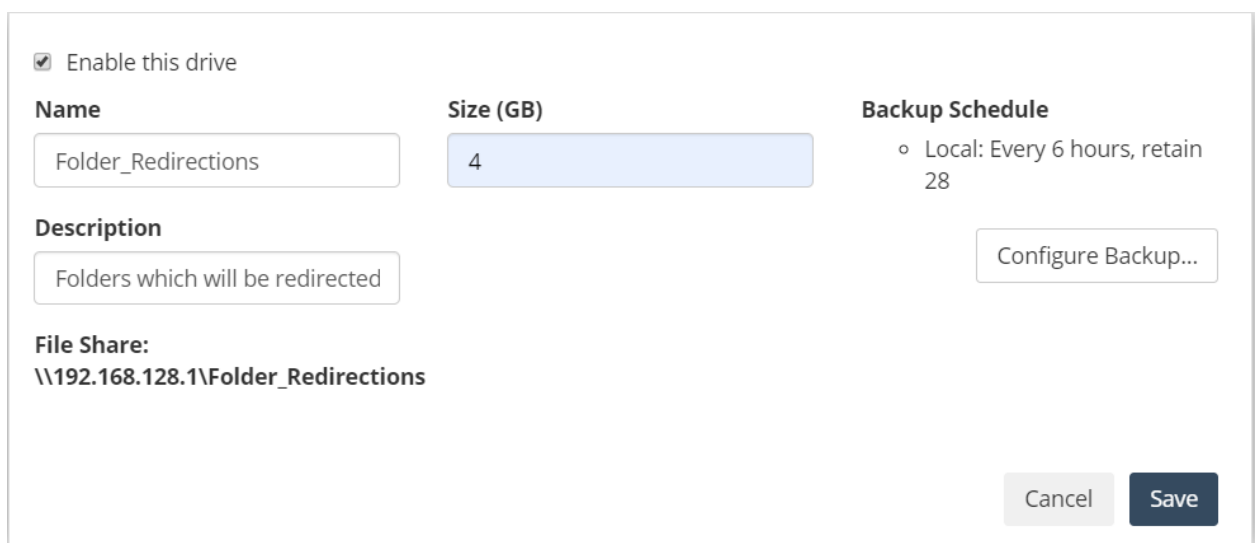
After a few minutes, the RSAT tool you selected will be installed on your device.

2. Go to <https://portal.upelevsystems.com/login> ----> Storage and create Drive.

It will be automatically map to domain with “Authenticated users” permissions. Is equal “Everyone in domain”

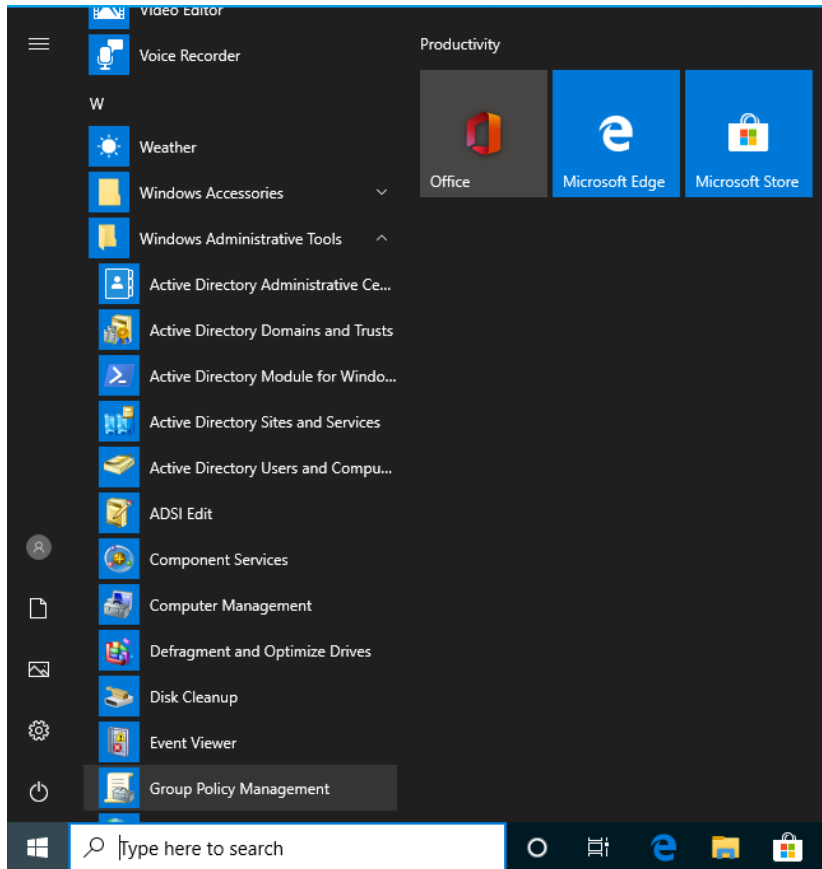
Note: Do not forget, most domain objects must have unique names.

For example: “Folder_Redirections”.



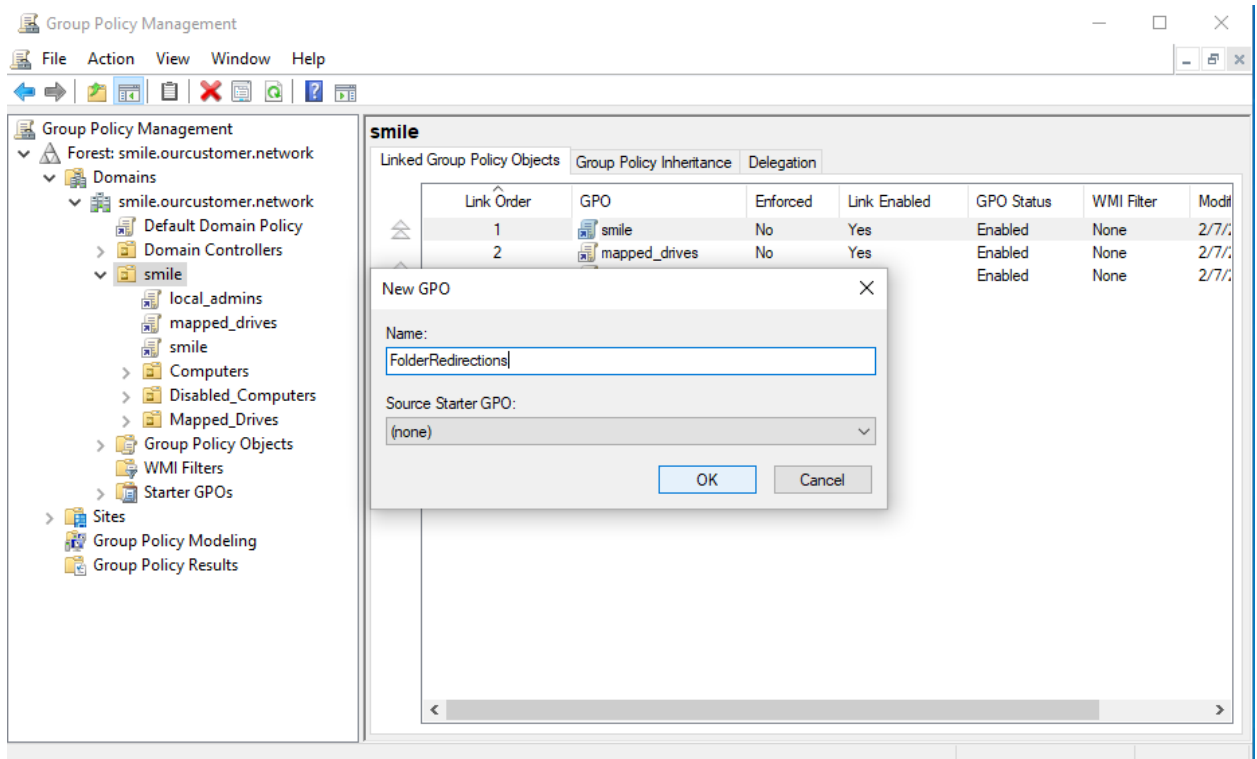
The screenshot shows the Windows Storage settings for a new drive. The interface includes a checkbox for "Enable this drive" which is checked. Below this are three columns: "Name" with a text input field containing "Folder_Redirections", "Size (GB)" with a numeric input field containing "4", and "Backup Schedule" with a radio button selected for "Local: Every 6 hours, retain 28". There is a "Description" section with a text input field containing "Folders which will be redirected" and a "Configure Backup..." button. The "File Share" section shows the path "\\192.168.128.1\Folder_Redirections". At the bottom right, there are "Cancel" and "Save" buttons.

3. Log in to a computer with an account that can edit group policies, such as the AD domain Administrator account.
4. Open the Group Policy Management Console.

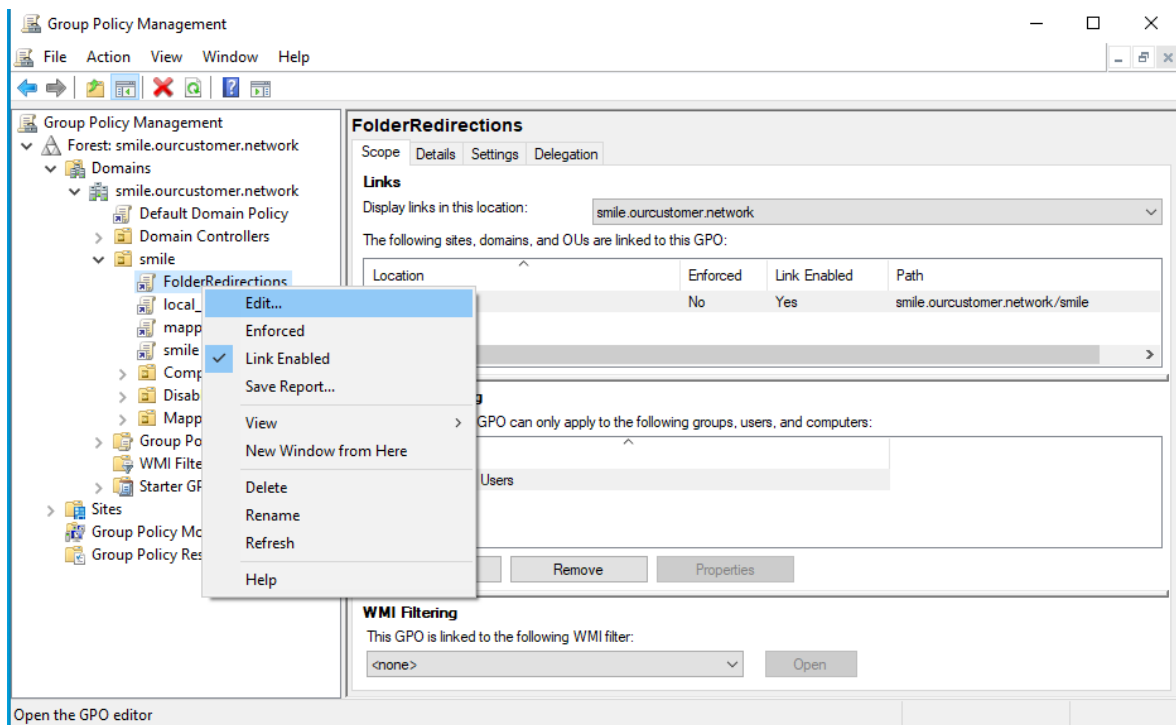


5. Right-click your AD domain and select Create a GPO in this domain

6. Enter a name for the GPO, such as FolderRedirections. The new GPO is shown below the domain entry.

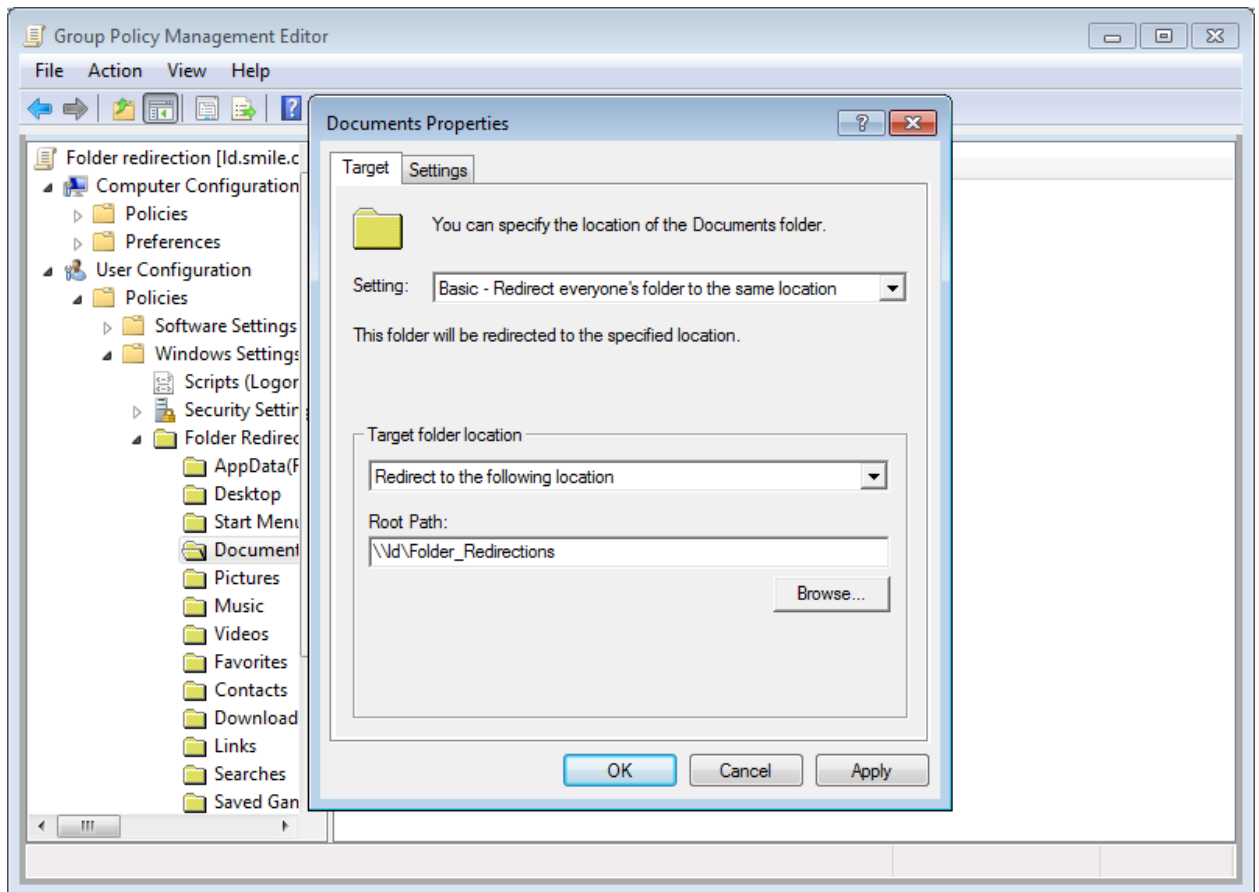


7. Right-click the newly-created GPO and select Edit to open the Group Policy Management Editor.



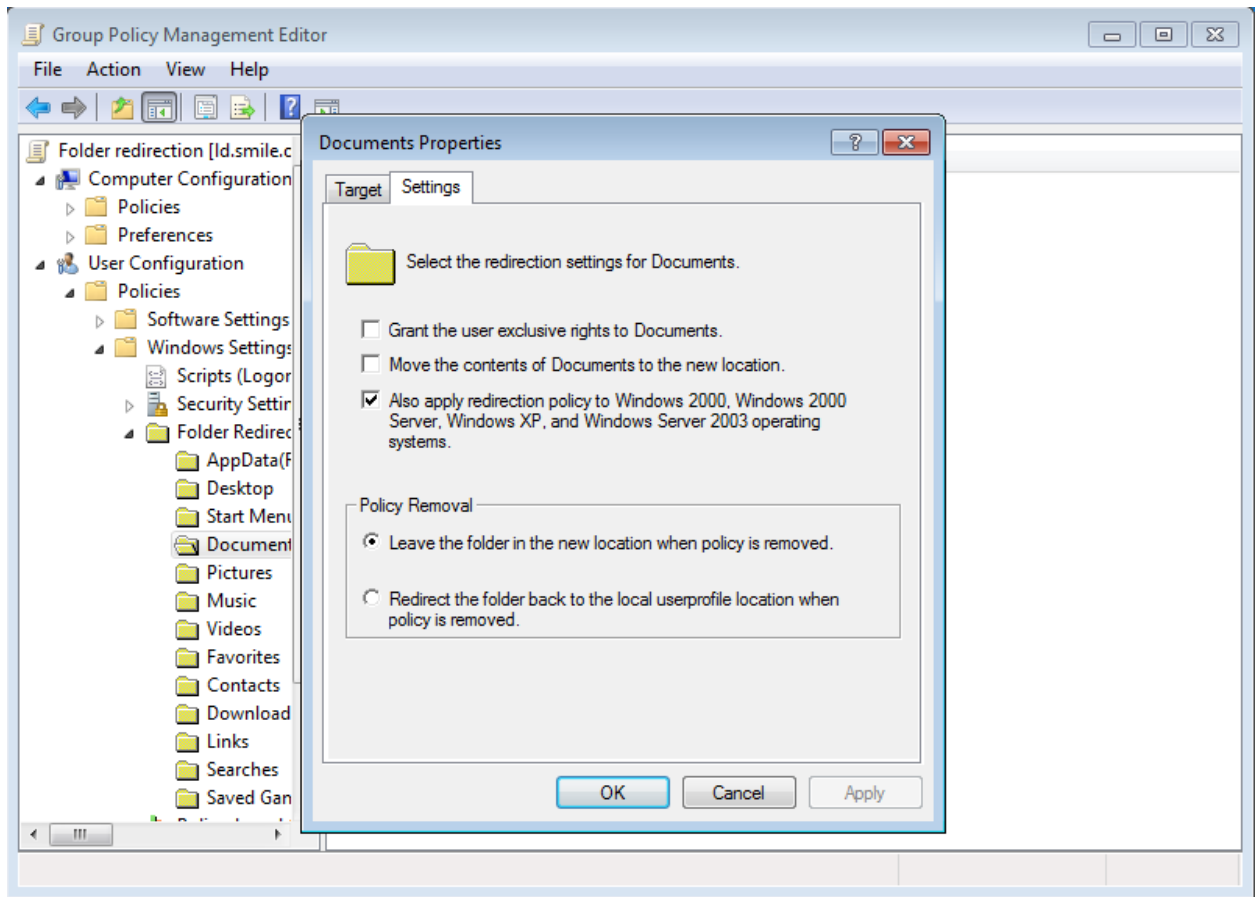
8. Navigate to the User Configuration → Policies → Windows Settings → Folder Redirection entry.

9. Right-click to the folder to redirect, such as Documents, and select Properties.



10. Set the following:
11. On the Target tab:
12. Setting: Basic - Redirect everyone's folder to the same location
13. Target folder location: Redirect to the following location
14. Root path

15. On the Settings tab:



16. Unselect Grant the user exclusive rights.

17. Unselect Move the contents of Documents to the new location.

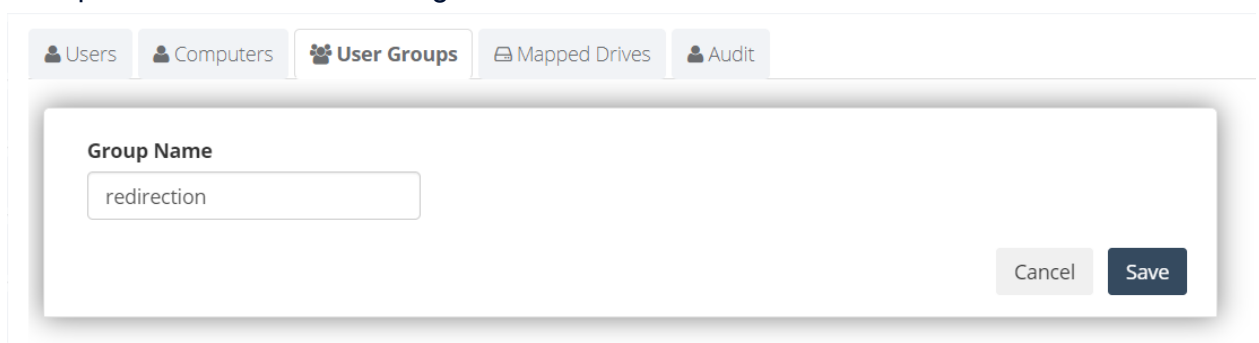
18. Select Also apply redirection to Windows 2000, Windows 2000 Server, Windows XP, and Windows Server 2003 operating systems.

19. Select Leave the folder in the new location when policy is removed.

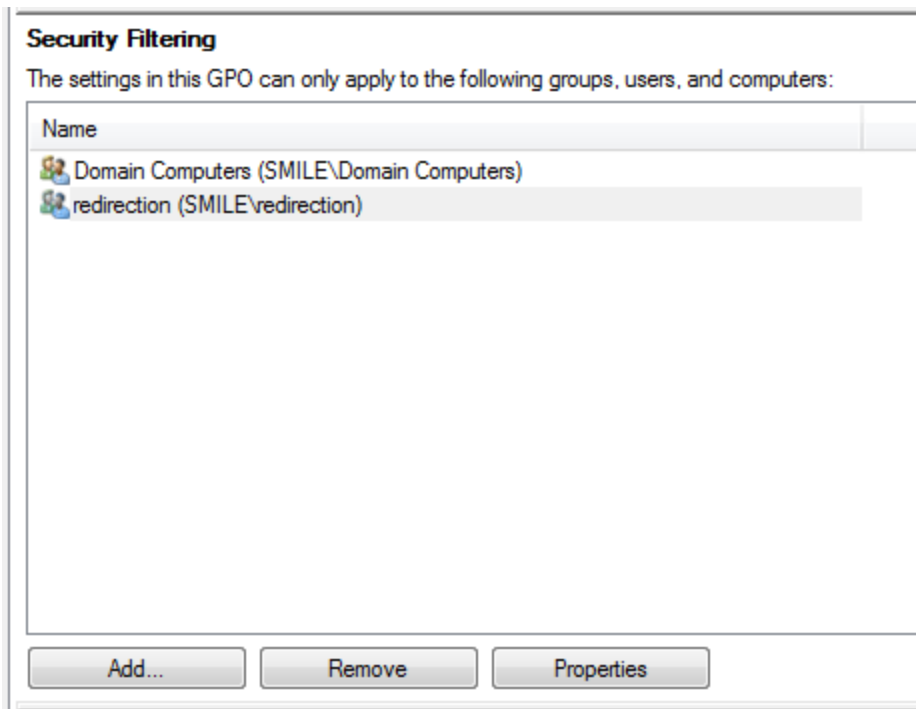
20. Click OK.

21. Optionally, redirect other folders in the same way.

22. If you would like to set up GPO for several Users, you need to create a group. For example: "redirection" then assign desired users.



23. At the Group Policy Management Editor remove “Authenticated Users” and add a newly created group. Also, you need to add “Domain Computers” to keep GPO working on all Windows versions.



24. Close the Group Policy Management Editor. The GPOs are automatically saved on the Sysvol share on the domain controller (DC).
25. Close the Group Policy Management Console.
26. After the GPO has been applied on a workstation, all members of the “redirection” group will have same “Documents” folders.

NOTE: Windows periodically refreshes group policy settings across the network. On client computers, this is done by default every 90 minutes, with a randomized offset of plus or minus 30 minutes. When you make a change to a group policy, you may have to wait two hours (90 minutes plus a 30 minute offset) before you see any changes on the client computers. Nonetheless, some changes will not be applied until the computer is restarted.

If you need to make the change right away, use the following command to start the updating process: `/force gpupdate`

This command compares the currently active GPO to the GPO on the domain controllers. If there has been no change since the last time the GPO was applied, the GPO is skipped. When the GPO updates:

Updating Policy...

User Policy update has completed successfully.

Computer Policy update has completed successfully.

