

# CONCRETE COMPASS

Welcome to the latest from the world of concrete



## IN THIS ISSUE

Celebrating the World of Concrete

Redefining concrete reinforcement -Introducing the Re-Poly RF47 Macro Synthetic Fibre

Rombus - Pavement Technology



## THE CANZAC TRAILBLAZERS

When it comes to providing sustainable construction solutions, we are proud to be trailblazers.

We are committed to pushing the boundaries of innovation in the concrete industry with a steadfast focus on environmental responsibility, engineering excellence and community support.

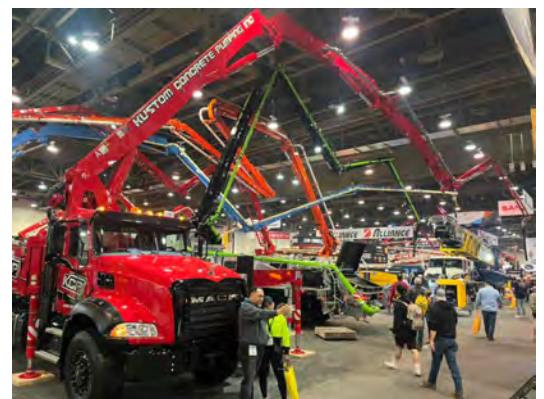
At CANZAC we strive to create a positive impact on the built environment, paving the way for a more sustainable and resilient future.

WORLD OF CONCRETE CELEBRATES

## 50 YEARS IN LAS VEGAS



The first World of Concrete was held in Houston, Texas in 1974. The small hall had 71 exhibitors and 1550 attendees. Certainly, a lot smaller than what it is today.



## A LITTLE HISTORY

The first World of Concrete was held in Houston, Texas in 1974. The small hall had 71 exhibitors and 1550 attendees. Certainly, a lot smaller than what it is today.

My first show was in 1994, when the World of Concrete was celebrating 20 years. It was held in New Orleans, Earnest Memorial Convention Centre with 862 exhibitors and 26,000sm of floor space. I thought it was a big event then. Although back then there were no education programmes (seminars), full scale demonstrations or outside events.

The only other city that I attended WOC was Orlando, Orange County Convention Centre. Two times, 1998 and 2004. It has been at the Las Vegas Convention Centre since 2005. 2009 being the biggest show ever in Las Vegas with over 90,000 attendees, 1800 exhibitors and a floor space over 100,000sm.

We exhibited our Joint Free Slab System at the WOC from 2005 to 2010. We won the most innovative product award in 2008 and we thought it would catapult into the US market but didn't in the end.

## IN 2008 WE WON THE MOST INNOVATIVE PRODUCT AWARD

This industry is not that quick to change. Grasping the opportunity is the easy bit, getting the beast to market can be a long game. They say, if you build a better mouse trap they will come running. "Like hell they will". Well that's for us, the creators and the innovators.

So, over my 30 years of attending the World of Concrete I've probably missed two to three of them to be honest.

We have brought back some very innovative products / systems that have changed the industry, lifted specifications and made contractors jobs a lot easier, while delivering better value to our clients.



**IN THE CONCRETE INDUSTRY WE DO BIG... AND THE 2024 SHOW WAS DEFINITELY THAT!**

This year's show used about 800,000sm of space in the north, central, south halls and the outside exhibition area. The Convention Centre has 1,000,000sm of space available now since the west hall was completed in 2022. This year there were 60,000 attendees, 1400 exhibitors and 325 first time exhibitors.

You could see and learn about anything and everything new in curing concrete production \* forming \* placing \* finishing \* repair \* demolition \* handling \* treatment \* site preparation ... the list goes on.

**Education and skill building is what the World of Concrete is all about.**

This year there were 185 seminars and workshops you could attend and everything from learning about artistic concrete to 3D printed concrete. You could even watch the mightiest of masons and decorative concrete demos.

**THE SPECTACULAR SPHERE, LAS VEGAS**



**We also took in this grand engineering feat!**

**Here's some quick facts:**

- Built:** 2019 - 2023
- Cost to Build:** 2.3 Billion
- Opened:** 29th September, 2023
- Seating:** 20,000
- Size:** 112m High and 150m wide, at it's widest point
- Area:** 81,300sm of space
- Speakers:** 167,000
- Sound and Visual:** Excellent
- Band:** U2



## CANUTE ON CONCRETE

INNOVATIVE CONCRETE REINFORCEMENT

### INTRODUCING THE RE-POLY RF47 100% RECYCLED MACRO SYNTHETIC FIBRE



At CANZAC we are the industry leader in innovative concrete construction solutions and are proud to announce the launch of the Re-Poly RF47 Macro Synthetic Fibre (MSF), a revolutionary product poised to redefine concrete reinforcement for non-structural applications.

**This cutting-edge solution is the culmination of extensive expertise in fibre manufacturing, recycled plastic technology, engineering and concrete construction experience.**



### UNMATCHED PERFORMANCE FOR NON-STRUCTURAL EXCELLENCE

Engineered with precision, Re-Poly RF47 fibres are specifically designed to deliver exceptional crack control and elevate concrete properties, making them an ideal choice for non-structural applications such as footpaths, bikeways, SUP, slabs and pavements.

**The result is concrete that not only exhibits heightened robustness and durability but also showcases resilience and longevity in the face of harsh environmental conditions.**

### COMPREHENSIVE SUPPORT SERVICES REDEFINING EXCELLENCE

At CANZAC, our commitment extends beyond providing innovative products. We offer a spectrum of comprehensive support services for the Re-Poly RF47 (MSF).

From sustainability assessments and concrete engineering design assistance to onsite supervision and product application guidance, we empower our customers with the knowledge and support necessary to make informed decisions and achieve optimal results.



### SUSTAINABILITY WOVEN INTO THE FABRIC

Crafted with pride in Australia, the Re-Poly RF47 MSF stands as a testament to our unwavering commitment to sustainability and environmental responsibility.

**Composed of 100% locally recycled plastic, this innovative product not only addresses plastic waste concerns but actively contributes to the circular economy by utilising recycled materials.**

In addition to the product's eco-friendly composition, the packaging process is executed by local NDIS workers, reinforcing our dedication to supporting and engaging with the local community.

### ADVANCING SUSTAINABLE PRACTICES

We are thrilled to introduce, The Re-Poly RF47 Macro Synthetic Fibre to the market, setting a new standard for sustainable and high-performance solutions in the construction industry.

**This innovation underscores our dedication to the advancing environmentally responsible practices, while ensuring our products meet the highest standards of quality and performance.**

**FOR FURTHER INFO, PLEASE CONTACT US HERE**

**0800 422 692  
INFO@CANZAC.COM**



## ROMBUS HAS ARRIVED

Rombus is the new innovative hybrid, ridged / flexible concrete pavement Technology. This new Technology is the first of its kind. Rombus is a game changer in the concrete pavement and concrete slab industry. It's unique design and engineering composition makes it ideal for high traffic areas. The recycled plastic grid system is sustainable and eco-friendly.

### HOW IT WORKS

The installation process is straight forward, simple and fast. The Rombus grid can be installed over an existing surface or a prepared base course layer. Once installed, the system is very durable and has low maintenance properties, reducing long term costs and ensuring the longevity of the wearing surface.



### WHY ROMBUS?

Rombus offers a wide range of benefits over traditional concrete slab and pavement systems. No formwork is required. No reinforcing mesh is required and no pumping cost because the concrete trucks can drive directly on the Rombus grid. No saw cuts are required, also there are fewer expansion joints that are required, so the savings to the construction and its slab can be considerable. Creating a cleaner, greener future for the concrete industry by introducing a revolutionary rapid deployment recycled plastic grid system that's stronger, faster, cheaper and greener than traditional methods.

### CONCRETE SLABS & FLEXIBLE PAVEMENT SOLUTIONS

NO FORMWORK COST

NO REINFORCING COST

NO PUMPING COST

NO SAWCUTTING COST

### USES INCLUDE

- Industrial
- Concrete Construction
- Recycling
- Farming & Agriculture
- Landscaping & Domestic Applications
- Retail Centres

### APPLICATIONS

- Apron Slabs
- Concrete Slabs
- Concrete Hardstands
- Car Parks
- Wash Pads
- Driveways
- Fuel Stations
- Golf Courses
- Paths & Walkways
- Boat Ramps
- Mine Access

### STRONGER

When the Rombus grid is filled with 32Mpa mix design concrete, the compressive strength is 100Mpa.

### FASTER

Our incredibly versatile grid is easily deployed, installed and can be removed insitu for any unforeseen subsurface repair. It can easily be used as a drainage solution within a pavement by using permeable aggregates in nominated areas.

### CHEAPER

The Rombus grid is modular and clips together requiring no skilled labour. Faster installation times reduce construction schedules, increasing productivity and only using 0.038 of concrete per square metre.

### GREENER

Passionate about industrial sustainability, we use 5.4kgs and 100% recycled plastic per m2, and at only 40mm thick we reduce the amount of concrete needed.



NEW PLACEMENT

18 MONTH OLD SLAB

GROUND FINISH