



POWER MINING

CRYPTOCURRENCY MINING CONTAINERS

At Power Mining, we make mining easy



Our Product

Power Mining cryptocurrency mining containers

Optimized solution for cryptocurrency mining right at the power source. It's possible to put 500 or more kW of miners inside our 20ft container models.

Power Mining also manufactures 20ft high cube and 40ft crypto mining containers.

The 20ft sea freight container base enables convenient transportation both inland as well as overseas. The simple, yet unique cooling solution and the use of effective materials have reduced the production costs to a minimum, therefore we can offer our solution with a competitive price tag, as the key goal for mining operations always is profit.

The unit production takes place in Riga, Latvia, with global transportation provided upon request. The container allows for mining at a preferred power source, making the entire mining process as cost efficient as possible.



What makes it so special?



Mobile

The space inside the container is used in the most effective way. The entire intermodal freight container build renders it easily scalable and transportable, with the capacity to host a mining farm of any size.



Unique Ventilation Solution

The inbuilt ASIC ventilation system is efficiently used to maintain mining equipment operations. An inner wall separates hot and cold air mixing, and prevents facility overheating. No extra fans needed!



Adaptive

The installation can be easily transformed to support different mining equipment, which can become handy in the future, when new and more effective mining machines will be available on the market.



Cost Effective

A key factor that reduces the production costs and wins over alternative solutions lies in the strategic use of existing mining equipment fans - no need for extra industrial fans! Additionally, the container shelves and electricity distribution systems are made of durable, yet cost-efficient materials, saving on overall expenses.



Easy Plug-and-Play Setup

No need for advanced knowledge to set-up the mining containers. The mining machines are plugged in the power outlets and the electrical distribution board must be provided with 400V (volt) three phase electrical connection (however, we can manufacture containers for other voltage inputs as well).

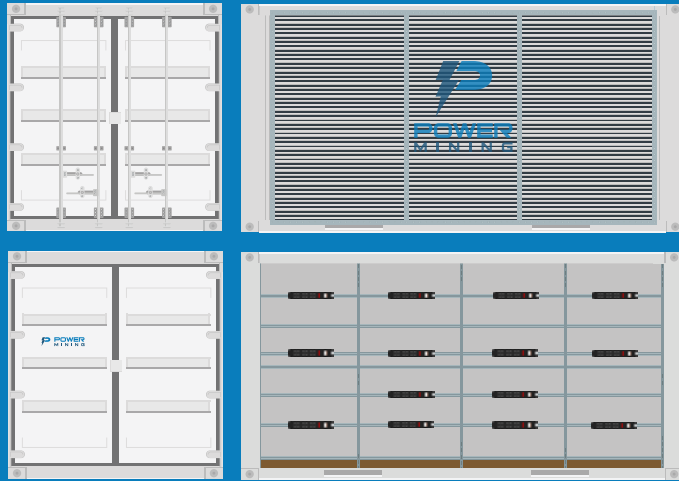


Optional Monitoring

The heat, humidity and power metrics can be monitored remotely. Miner status can be monitored remotely using Awesome Miner monitoring software installed on VPS server, connected to the core router through VPN. Additionally, video surveillance and security systems can be installed.



Power Mining 20ft container specs



20ft sea freight container
2440x2600x6058 mm
~3000kg



6-8 rows of shelves
for miners



Up to 600 kW
(nominal power)



Air filters



Place for up to
272 ASICs*



Operating temperature:
From -25°C up to +35°C
From -14°F up to 95°F



Connection of three
phase electrical
power (400-480V)



Custom made
12 x C19 port PDUs

*if container is built for Antminer S9, 162 for Antminer S19.

What is included in the base price?

Filtration system and side grills

G4 or G5 Panel Air Filters (EN: 779)

Ventilation grills for air inflow and outflow

Electrical distribution set

Electrical distribution board (1250A 3 phase input)

15 pcs. C19 12 port PDUs (made by Power Mining)

5*16mm² cables from el. distribution board to PDUs

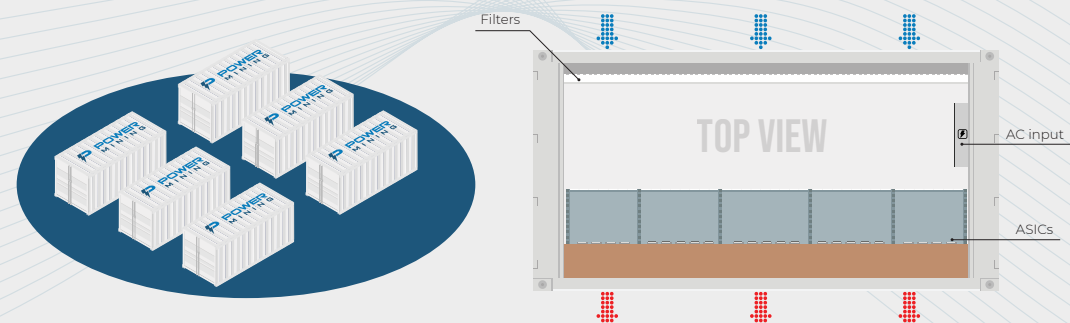
Other constructions

Shelves for miner placement

Laser cut hot and cold air zone isolation sheets

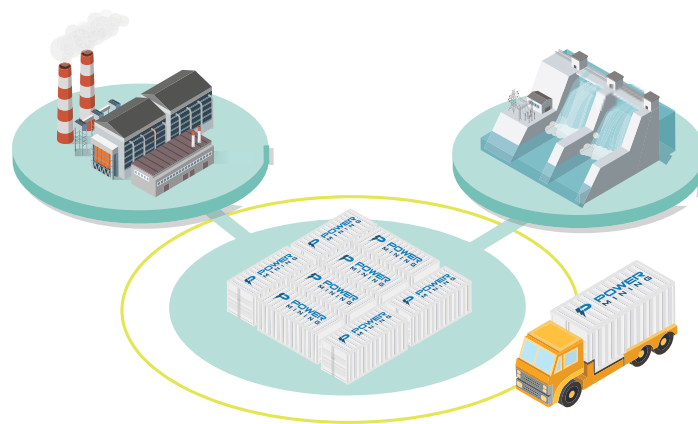
Electrical outlets for peripherals

Standby lights



Power Mining container models and base prices

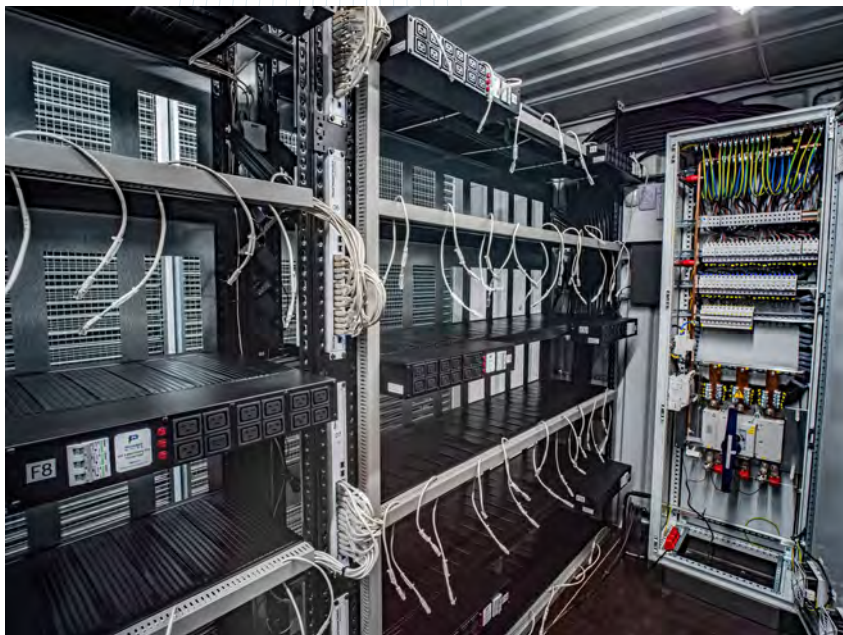
Container model	ASIC-162 (20ft)	ASIC-324 (40ft)	PM-GPU (20ft or 40ft)
Miner support, max. amount	Newest generation (~3,5kW, dual fan) 162 x Bitmain Antminer S17, S19, S19 Pro; 162 x Canaan Avalon A1246, A1066; 162 x WhatsMiner M30S, M32, M20; 162 x Innosilicon A10 series. Older generation (~1.5kW, single fan) 272 x Bitmain Antminer S9; 272 x Canaan Avalon A841, A851.	Newest generation (~3,5kW, dual fan) 324 x Bitmain Antminer S17, S19, S19 Pro; 324 x Canaan Avalon A1246, A1066; 324 x WhatsMiner M30S, M32, M20; 324 x Innosilicon A10 series. Older generation (~1.5kW, single fan) 544 x Bitmain Antminer S9; 544 x Canaan Avalon A841, A851.	Custom
Container base price	32 999 €	63 998 €	From 29 999€



What would be the mining outcome in different scenarios?

Here are examples, if the 20 ft ASIC-162 container is used with Canaan, Bitmain or Whatsminer ASICs

Manufacturer	Canaan	Bitmain	WhatsMiner
Model	Avalon 1246 90TH/s	Antminer S19 Pro 110 TH/s	M30S 90Th/s
kW (1 miner)	3,4 kW	3,35 kW	3,4 kW
Max. miners per container	162	162	162
Total power consumption	550 kW	540 kW	550 kW
Total container hashrate	14,5 PH/s	17,8PH/s	14,5 PH/s



How much does it cost?

Starts from **32 999 € + VAT**

Options available:

Item	Details	Price
Spare filter set	32 pcs 592x592mm panel filters G4, M5 or different	400 €
LAN setup	CAT5E network cabling; MikroTik LTE capable router (with SIM card slot for 4G GSM and VPN functionality); 24 port MikroTik manageable switches; Router, switch and network firewall configuration; VPS and VPN configuration if necessary;	4000 €
Intelligent PDUs	15 x remote 12 port PDUs by Power Mining	15000 €
Video surveillance system	4 x Hikvision IP cameras+ NVR + installation	2200€
Access control system	Electronic access with keypad, GSM module, smoke and movement detectors, door opening sensor, battery backup.	1200 €
Temperature monitoring	3 temperature sensors (cold zone + hot zone + outside temperature) + humidity sensor. E-mail alerts, remote monitoring.	800 €
Custom options	We can build custom containers and implement custom options based on your needs.	TBD

Transportation cost varies depending on the distance. Here are some examples of popular destinations:

Destination:	Cost	Shipping time
Sweden (Gothenburg)	2 800 €	4 days
Norway (Oslo)	2 900 €	5 days
USA (Port of Houston)	5 000 €	6 weeks
USA (Port of Los Angeles)	4 000€	7-8 weeks
Canada (Port of Montreal)	3 500 €	6 weeks
Iceland (Port of Reykjavik)	4 100 €	10 days
Main ports in China	2 300 €	8 weeks





Get In Touch

OFFICE

Power Mining LLC
Gustava Zemgala gatve 78
Riga, LV-1039
LATVIA

CONTACT

info@powermining.io

Phone (EU): **+371 272 599 00**

Phone (USA): **1-716-226-2811**

www.powermining.io

This paper is for information purposes only and does not represent obligations on any party.

For detailed information on the offer, please, contact our sales representative through the contact details written above.

