



Order of Worship  
February 4, 2024  
Livestream 10:15 AM

## SUNDAY SCHEDULE

1300 E Aloha St

Worship 10:15 AM

Live stream found on

Grace Church Seattle's

[YouTube](#)

## WORSHIP SERVICE

### 10:15 AM

Nursery: (6 months to 2yrs)

Room 118

(children may be picked up at the end of the worship service)

Preschool: (3yrs to 5yrs) Room

120 (children are picked up during *offering*)

Worship Prep Class: (Kinder to 3rd grade) Room 119

(children are picked up during *passing of the peace*) No class 5th Sundays of the month.

Infant Room

Priority for nursing moms.

Back of Sanctuary, west side.

Family Room

Chapel (Livestream Viewing)

Lap desks, color pencils, activity pages are found in foyer

Parents, please note our Diocese requires minors never be unaccompanied during church events including Sunday morning worship. Thank you for keeping an eye on your children. Please reach out to any of our pastoral staff with questions. Thank you for your understanding.

## EPIPHANY 2024

The word "epiphany" originates from the Greek word *epiphaneia* which translates to an appearance, a manifestation, or a discovery. The holiday itself is traditionally celebrated on the 6th day of January and commemorates the revelation of the Lord Jesus Christ to the world.

The season of Epiphany extends from January 6th until Ash Wednesday, the beginning of the Lenten season. Along with Christmas and Easter, Epiphany is one of the three oldest Christian festivals and was celebrated as early as the latter half of the second century.

One of the major events associated with the Epiphany season is the wise men's visit to the baby Jesus (Matthew 2). The wise men were the least likely people to recognize Jesus as Savior. They were astrologers who were immersed in an entirely different religion. In fact, according to the Old Testament, the wise men were individuals who led people astray from the true God (Isaiah 47).

But, nonetheless, the wise men come to Bethlehem and bow before Jesus. And, what do they find there? They do not find condemnation. Rather, they find a king who is gracious and kind to them. They are received by this king, and their faith has been celebrated throughout the centuries.

So what is Epiphany all about? Epiphany is about discovering the God of all grace. The God who is not just present and gracious to those who are near Him, but, who is also present and gracious to those who are far off.

So, no matter where you are with God, Epiphany is a time to come near to him and discover his grace.

CLI Copyright License:

1409611

CCLI Streaming License:

20129254

Unless otherwise noted, all Scripture quotations are from The Holy Bible, New International Version®, NIV® Copyright ©1973, 1978, 1984, 2011 by Biblica, Inc.® Used by permission. All rights reserved worldwide.

## REFLECTION QUOTES

It is a painful fact indeed to realize how poorly prepared most Christian leaders prove to be when they are invited to be spiritual leaders in the true sense. Most of them are used to thinking in terms of large-scale organization, getting people together in churches, schools, and hospitals, and running the show like circus directors. They have become unfamiliar with, and even somewhat afraid of, the deep and significant movements of the spirit.

It is possible that the Church could be accused of having failed in its most basic task: to offer people creative ways to communicate with the source of human life.

But how can we avoid this danger? I think by no other means than to find the courage to enter into the core of our own existence and become familiar with the complexities of our own inner lives. As soon as we feel at home in our own house, discover the dark corners as well as the light spots, the closed doors as well as the drafty rooms, our confusion will evaporate, our anxiety will diminish, and we will become capable of creative work.

**Henri Nouwen, *The Wounded Healer***

Vulnerability is the core of shame and fear and our struggle for worthiness, but it's also the birthplace of joy, creativity, belonging, and love.

You cannot selectively numb emotion. You can't say, here's the bad stuff. Here's vulnerability, here's grief, here's shame, here's fear, here's disappointment. I don't want to feel these. I'm going to have a couple of beers and a banana nut muffin.... You can't numb those hard feelings without numbing the other affects. Our emotions cannot selectively numb. So, when we numb those, we numb joy, we numb gratitude, we numb happiness. And then, we are miserable, and we are looking for purpose and meaning, and then we feel vulnerable, so then we have a couple of beers and a banana nut muffin. And it becomes this dangerous cycle.

**Brené Brown**

Grafting is a technique that joins the tissues of two plants together so they continue to grow as one plant.

In viticulture this technique allows grapevines to express the desirable varietal characteristics of the [branch] (the upper part of the plant) in the fruits, while developing or keeping the root system of the [vine] (lower part of the joined plant).

**Sylvia Wu, *Decanter***

Liturgical Colors: Liturgical colors can orient us to the season of the church year and help to engage our sense of sight in worship.

Green is the color for Epiphany, symbolizing growth and new life in our walk with Jesus.

The small symbols you will see throughout these pages correspond to a "Key to Liturgy" [available here](#) or printed and found in the lobby at the Grace Kids Table. .

Prayer by  
ACNA BCP

The Acclamation, similar to a greeting, is a way we welcome each other into this holy space and time. It prepares us for the hearing and responding to God. Our liturgy can be thought of as a conversation between each other and God. Conversations require both hearing a responding. The Acclamation prepares us for the hearing and responding to God.

ACNA Book of Common Prayer,  
2019



## THE FIFTH SUNDAY OF EPIPHANY

Epiphany is the season of the church calendar after Christmas and before Lent. An "epiphany" is an "A-ha moment" where we suddenly see or understand something that we didn't grasp before. In the season of Epiphany, the church celebrates events in Jesus' life—the visit of the Magi, turning water into wine, and his baptism—that manifest who he is as Savior of the world.

Here is a fitting prayer for the Epiphany season:

*O God, by the leading of a star you manifested your only Son to the peoples of the earth: Lead us, who know you now by faith, to your presence, where we may see your glory face to face; through Jesus Christ our Lord, who lives and reigns with you and the Holy Spirit, one God, now and forever. Amen.*

### PREPARATION FOR WORSHIP

**WELCOME** **Seated**

### PRELUDE

**THE ACCLAMATION** **Stand if able**

Blessed be God:

the Father, the Son, and the Holy Spirit.

**And blessed be his kingdom,  
now and for ever. Amen.**

### CALL TO WORSHIP

*Psalm 86:1-4*

Hear me, Lord, and answer me,

**for I am poor and needy.**

Guard my life, for I am faithful to you;

**save your servant who trusts in you.**

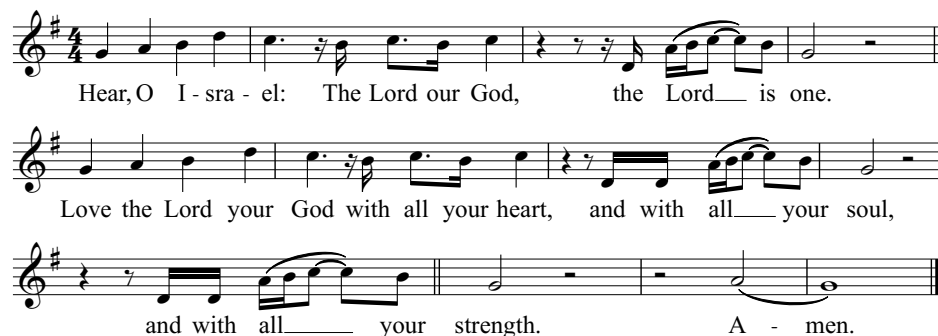
You are my God; have mercy on me, Lord,

**for I call to you all day long.**

Bring joy to your servant, Lord,

**for I put my trust in you.**

## Shema



Hear, O I - sra - el: The Lord our God, the Lord is one.

Love the Lord your God with all your heart, and with all your soul,

and with all your strength. A - men.

Jess Alldredge  
©2022 Grace Church Seattle

## Root and Ground Us



1. Co - ver us in your love; root and ground us.  
2. Broad - er than the o - pen plain; root and ground us.

Give us strength to com - pre - hend; root and ground us  
Long - er than the mount - ain range; root and ground us

1. to know your love. Just to know your  
love; to know your love is e - nough.

2. 3. High - er than the stakes we play; root and ground us.  
Deep - er than the wounds we take; root and ground us.

2. Fill us with the full - ness of God. Fill us with the  
full - ness of God. To know your love. Just to know your  
love; to know your love is e - nough.

4. Just to know your love is e - nough.

Nate Sahr, 2023

A collect is a prayer that is intended to collect or sum up the prayers of the community, typically following a four-fold pattern: invocation, meditation, petition, and doxology. The Collect for Purity helps us to hear God's word and worship by reminding us that we are laid bare when we come before him. He sees and knows all that we are and all that we bring to him.

We come to God that we might be shaped and formed by his Word.



"Lectio Sacra" means "sacred reading." It has been the practice of the church for thousands of years to have portions of the bible read during worship services. The assumption behind this practice is that we are people who need to be shaped by all of God's word.

Musical interludes are included in our service in order to provide space for reflection and worship.

## THE COLLECT FOR PURITY

**Almighty God,**

**to you all hearts are open,  
all desires known,  
and from you no secrets are hid:**

**Cleanse the thoughts of our hearts**

**by the inspiration of your Holy Spirit,  
that we may perfectly love you,  
and worthily magnify your holy Name;  
through Christ our Lord. Amen.**

## LITURGY OF THE WORD

**Seated**

### LECTIO SACRA

#### Old Testament Reading

*Genesis 12:1-3 ESV*

Now the Lord said to Abram, "Go from your country and your kindred and your father's house to the land that I will show you. And I will make of you a great nation, and I will bless you and make your name great, so that you will be a blessing. I will bless those who bless you, and him who dishonors you I will curse, and in you all the families of the earth shall be blessed."

#### New Testament Reading

*Revelation 7:9-12 ESV*

After this I looked, and behold, a great multitude that no one could number, from every nation, from all tribes and peoples and languages, standing before the throne and before the Lamb, clothed in white robes, with palm branches in their hands, and crying out with a loud voice, "Salvation belongs to our God who sits on the throne, and to the Lamb!" And all the angels were standing around the throne and around the elders and the four living creatures, and they fell on their faces before the throne and worshiped God, saying, "Amen! Blessing and glory and wisdom and thanksgiving and honor and power and might be to our God forever and ever! Amen."

#### Gospel Reading

*John 15:1-5 ESV*

"I am the true vine, and my Father is the vinedresser. Every branch in me that does not bear fruit he takes away, and every branch that does bear fruit he prunes, that it may bear more fruit. Already you are clean because of the word that I have spoken to you. Abide in me, and I in you. As the branch cannot bear fruit by itself, unless it abides in the vine, neither can you, unless you abide in me. I am the vine; you are the branches. Whoever abides in me and I in him, he it is that bears much fruit, for apart from me you can do nothing.

This is the word of the Lord.

**Thanks be to God!**

### INTERLUDE



## PRAYING THE PSALMS

*Psalm 86*

Hear me, Lord, and answer me,  
for I am poor and needy.  
Guard my life, for I am faithful to you;  
save your servant who trusts in you.

**You are my God; have mercy on me, Lord,  
for I call to you all day long.  
Bring joy to your servant, Lord,  
for I put my trust in you.**

You, Lord, are forgiving and good,  
abounding in love to all who call to you.

**Hear my prayer, Lord;  
listen to my cry for mercy.  
When I am in distress, I call to you,  
because you answer me.**

Among the gods there is none like you, Lord;  
no deeds can compare with yours.  
**All the nations you have made  
will come and worship before you, Lord;  
they will bring glory to your name.  
For you are great and do marvelous deeds;  
you alone are God.**

Teach me your way, Lord,  
that I may rely on your faithfulness;  
give me an undivided heart,  
that I may fear your name.  
**I will praise you, Lord my God, with all my heart;  
I will glorify your name forever.  
For great is your love toward me;  
you have delivered me from the depths,  
from the realm of the dead.**

Arrogant foes are attacking me, O God;  
ruthless people are trying to kill me—  
they have no regard for you.  
**But you, Lord, are a compassionate and gracious God,  
slow to anger, abounding in love and faithfulness.  
Turn to me and have mercy on me;  
show your strength in behalf of your servant;  
save me, because I serve you  
just as my mother did.  
Give me a sign of your goodness,  
that my enemies may see it and be put to shame,  
for you, Lord, have helped me and comforted me.**

Praying through the Psalms each week teaches us how to pray, using the prayer book of ancient Israel. As we pray, there will be pauses for reflection.

Stand if able

## Teach Me, O Lord

Text: Psalm 119, Genevan  
Psalter, 1912  
Music: Jess Alldredge, 2014

1. Teach me, O Lord, your way of truth,  
2. In your com-mand - ments\_ make me\_ walk,  
3. Your word sheds light up - on my\_ path;  
4. I thirst for your com - mand - ments, Lord,

and from it I will not de - part;  
for in your law my joy shall be;  
a shi - ning light, it guides my feet;  
and for your mer - cy presses my claim;

that I may stead - fast - ly o - bey,  
give me a heart that loves your will,  
your sound\_ judg - ments to ob - serve,  
O look on me and show the\_ grace

give me an un - der - stand - ing\_  
from dis - con - tent and en - vy\_  
my so - lemn vow I now re -  
dis - played to all who love your\_

8 1. 3. 2. 4. 4

— heart\_  
— free\_  
— - peat.  
— name\_



Seated

## SERMON

*The Ancient Wisdom of Lent—Fasting & Prayer*

*John 15:1-6*

Rev. John Haralson

## INTERLUDE

Musical interludes are included  
in our service in order to provide  
space for reflection and worship.



**Stand if able**

## Abide With Me

1. A - bide with me; fast falls the e - ven -  
2. Thou on my head, in ear - ly youth didst -  
3. I need Thy pres - ence, eve - ry pass - ing  
4. I fear no foe, with Thee at hand to  
5. Hold Thou Thy cross, be - fore my clos - ing

tide; The dark - ness deep - ens; Lord with  
smile; And, though re - bel - lious, and per -  
hour; What but Thy grace, can foil the  
bless; Ills have no weight, tears lose their  
eyes; Shine through the gloom, and point me

me a - bide. When oth - er help - ers, fail and  
verse mean - while, Thou hast not left me, oft as  
tempt - er's power? Who, like Thy - self, my guide and  
bit - ter - ness. Where is thy sting death? Where grave thy  
to the skies. Heav'n's morn - ing breaks, and earth's vain

com - forts flee, Help of the  
I left Thee, On to the  
stay can be? Through cloud and  
vic - to - ry? I tri - umph  
shad - ows flee; In life, in

help - less, a - bide with me.  
close - Lord, a - bide with me.  
sun - shine, a - bide with me.  
still, a - bide with me.  
death, Lord, a - bide with me.

Henry Francis Lyte 1846  
Justin Smith  
© 2007 Justin Smith Music

**Kneel or Sit**

## CONFESSION OF SIN



**Jesus, you are the true, rich, abundant vine.**  
**You rose from the grave, triumphing over death.**  
**To abide in you is to abide in life itself.**

**Yet, we avoid you.**

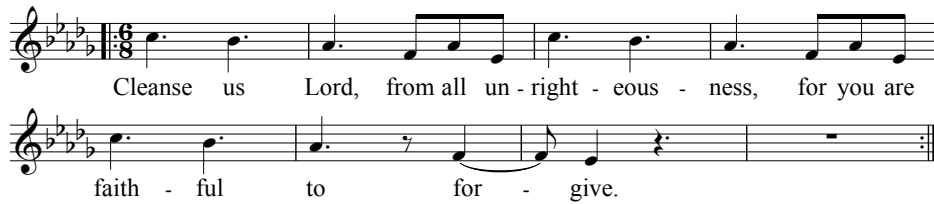
**In our shame,**  
**we think our sins are too big for you.**  
**In our self-loathing,**  
**we think our problems are too small for you.**  
**In our fear,**  
**we think you don't delight in our presence.**

**Cleanse us from our sins.**  
**Deliver us from strongholds of pride and unbelief.**  
**Fill us with the joy of your Spirit.**

*(You are invited to confess your sins silently.)*

**Cleanse Us Lord**

Bobby Krier, Jess Alldredge  
© 2014 Grace Church Seattle

**RECEIVING OF GRACE**

Romans 8:1-2

Family of God, hear the good news:

Therefore, there is now no condemnation for those who are in Christ Jesus,  
because through Christ Jesus the law of the Spirit who gives life has set you  
free from the law of sin and death.

May the peace of Christ be with you!

**And also with you!**

**Before The Throne Of God Above**

Charitie Lees Bancroft  
and Vikki Cook  
© 1997  
Sovereign Grace Worship



## PASSING THE PEACE

**\*Parents, please pick up your children from the Worship Prep Class.**

**Children in Preschool are not picked up until Offering, and Nursery may stay through to the end of worship.**

As recipients of God's grace, we gladly receive peace from him. In response to his grace, we also extend that grace to one another. Traditionally, Christians have greeted one another during this time in the service with the phrase, "*May the peace of Christ be with you*" and receive back the greeting "*And also with you.*"

**Seated**

## WELCOME & ANNOUNCEMENTS

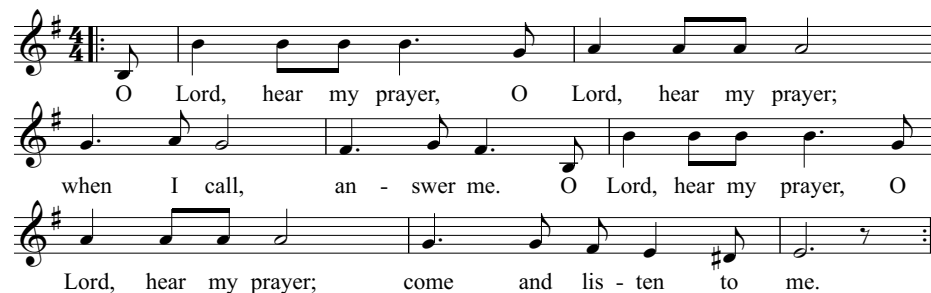
If you are new, please let us know about your visit through the QR code. If you are a regular attender, you can update your household information through the same QR code. Please use the cards inserted in the Order of Worship to share any praises or prayer requests you might have.



Turn to page 17 & 18 for announcements and event details.

**Stand if able**

## O Lord, Hear My Prayer



O Lord, hear my prayer, O Lord, hear my prayer;  
when I call, an - swer me. O Lord, hear my prayer, O  
Lord, hear my prayer; come and lis - ten to me.

Music: Jacques Berthier  
1923-1994  
Lyrics: Psalm 102:1-2;  
adapt. The Community of Taizé  
1991



## PRAYERS OF THE PEOPLE

Let us pray for the Church and for the world, saying, "hear our prayer."

For the peace of the whole world,  
and for the well-being and unity of the people of God. *(Silent prayer.)*

Lord, in your mercy,

**Hear our prayer.**

For Foley Beach, our Archbishop, and Todd Hunter, our Bishop,  
and for all the clergy and people of our Diocese  
and Congregation. *(Silent prayer.)*

Lord, in your mercy,

**Hear our prayer.**

For all those who proclaim the Gospel at home and abroad;  
and for all who teach and disciple others. *(Silent prayer.)*

Lord, in your mercy,

**Hear our prayer.**

For our brothers and sisters in Christ  
who are persecuted for their faith. *(Silent prayer.)*

Lord, in your mercy,

**Hear our prayer.**

For our nation, for those in authority,  
and for all in public service. especially Mayor Harrell,  
Governor Inslee, and President Biden. *(Silent prayer.)*

Lord, in your mercy,

**Hear our prayer.**

For all those who are in trouble, sorrow, need, sickness,  
or any other adversity, especially the unhoused in our city.  
*(Silent prayer.)*

Lord, in your mercy,

**Hear our prayer.**

For all those who have departed this life  
in the certain hope of the resurrection,  
in thanksgiving let us pray. *(Silent prayer.)*

Lord, in your mercy,

**Hear our prayer.**

**Heavenly Father, grant these our prayers  
for the sake of Jesus Christ,  
our only Mediator and Advocate,  
who lives and reigns with you in the unity  
of the Holy Spirit, one God, now and forever. Amen.**

Stand if able

## You Hear Us Calling (Prayers of the People)

Music score for 'You Hear Us Calling (Prayers of the People)'. The score is written in treble clef with a key signature of one sharp (F#) and a common time signature (C). The lyrics are: 'You hear us cal - ling; you hear us cal - ling, Ab - ba, Fa - ther; You hear us cal - ling; you hear us cal - ling, Ab - ba, Fa - ther. Lord, have mer - cy; Christ, have mer - cy; Lord, have mer - cy; Christ, have mer - cy. 1. Christ, have mer - cy. 2. mer - cy. D.S. 3. Lord, have mer - cy.' The score includes a repeat sign with first and second endings, a double bar line, and a section marked '6'.

Ben Kilgore, David Gungor, Evan Wickham, Ian Cron, and John Arndt  
© 2015 Integrity Worship Music/  
The Brilliance Music/ASCAP

Seated

## OFFERING

**\*Parents, please pick up your children from the Preschool Class. Nursery may stay through to the end of worship.**

To give to the Grace General Fund, you can give several ways:\*\* Please note that giving via credit/debit card incurs a processing fee of approximately 2%.\*\*

- To give via credit card, text GODISLOVE to 206.859.9405 or scan the QR code. (This will take you to our giving page)
- Give via Venmo (Give to @graceseattle; all transactions are private)
- Give via PayPal (Give to bookkeeper@graceseattle.org)
- To gift stock, contact our bookkeeper@graceseattle.org
- Mail to check to:\*\*\*All mail must be addressed to Grace Church Seattle\*\*\*  
Grace Church Seattle  
505 Broadway E, PMB 324, Seattle, WA 98102



### Offering Tiles

Many of us tithe electronically and this can be a wise practice and a blessing to the church. A downside can be the loss of the embodied practice of physically bringing our offering to the Lord. If it will aid you in your worship to reclaim a physical expression of tithing, tiles are now available in baskets at our welcome table for you to choose and place in the offering basket as it is passed.

To give to the Serving the City Fund or Benevolence Fund, you can give several ways:

- For text, online, and app giving, specify "Serving the City" "Benevolence Fund" in the "Fund" field.
- For all other giving, Indicate "Serving the City" or "Benevolence Fund" in the memo or comments field.
- Matching giving available through Benevity (contact our bookkeeper for details).

## MUSICAL OFFERING

We come to the Table of our Lord  
that he might feed and nourish us.



The *Sursum Corda* (Latin: "Lift up  
your hearts") is an ancient  
Christian communion prayer.  
Through the power of the Holy  
Spirit, we have been raised with  
Christ and now reign with him in  
heaven.

## LITURGY OF THE TABLE

**Stand if able**

### THE SACRAMENT OF COMMUNION

#### We Ascend (The Sursum Corda)

The Lord be with you.

**And with your spirit.**

Lift up your hearts.

**We lift them up to the Lord.**

Let us give thanks to the Lord our God.

**It is right to give him thanks and praise.**

It is right, our duty and our joy,  
always and everywhere to give thanks to you,  
Father Almighty, Creator of heaven and earth.

Therefore we praise you,  
joining our voices with Angels and Archangels  
and with all the company of heaven,  
who for ever sing this hymn  
to proclaim the glory of your Name:

#### The Song of Heaven (The Sanctus)

1. Ho - - ly, ho - ly, ho - ly  
2. Hea - ven and earth are full of your glo -  
3. Bles - sed is he who comes in the name of the

Lord, God of pow - er and might,  
-ry. Ho -  
Lord. Ho -

2. 3.  
sa - nna in the high - est!  
sa - nna in the high - est!

The *Sanctus* (Latin: "Holy") is one  
of the songs being sung in  
heaven before God's throne. We  
join our voices to with the  
angels and those who have  
gone before us in the faith to  
give glory to God.

Jess Alldredge  
©2022 Grace Church Seattle

**We Remember (Words of Institution)****We Ask God's Blessing (Prayer of Consecration)**

Gracious God, pour out your Holy Spirit upon these your gifts of bread and wine that they may be for your people the body and blood of your Son Jesus Christ. By your Spirit, may we be one body with him, that he may dwell in us and we in him.

**As this bread is Christ's body for us, send us out to be the body of Christ in the world. For by him, with him, and in him, in the unity of the Holy Spirit, all honor and glory is yours, Almighty Father, now and forever. Amen.**

**We Preach the Good News**

Together we proclaim the mystery of the faith:

**Christ has died,  
Christ is risen,  
Christ will come again.**

**We Draw Near (The Lord's Supper)**

*(All are invited to come forward during Communion. The act of receiving the bread and wine is a confession, that as you receive those gifts, you have already received the gift of a renewed relationship with God, through Christ. If that is not your confession, you may still come forward to receive a prayer. Simply cross your arms across your chest as an indication that you are coming for prayer.)*

**Communion Elements:**

Cup: Wine or Grape Juice

Bread ingredients: Wheat Flour, Rye Flour, White Unbleached Flour, 1% Milk, Yeast, Vegetable Oil

Rice Crackers: Organic Brown Rice Flour, Organic White Rice Flour

Prefilled, factory-sealed communion

elements also available:

Communion wafer ingredients: wheat flour, water, vegetable shortening (soybean oil, cottonseed oil).

**Receiving Communion**

We will come forward by rows, starting at the front. There will be factory sealed communion elements as well as gluten free crackers with designated juice and wine on the table at the front. Otherwise, there is bread to dip in either wine (tall cup) or juice (short cup).

**Take Us O Lord**


1. O how he takes the cross; O how he lifts it up  
 2. Hear how he breaks the curse; Hear how he cries a-loud.  
 3. How deep the wounds he wears; How deep the scars he shows.

to take the weight from us. O how he pays the cost;  
 Hear how his voice re-sounds. O how he forms the words.  
 How well the name he knows: writ-ten up - on the palms,

O how he drinks the cup to make a place for us. -- (go to Verse 2)  
 O how he cries them out: "See, it is fin-ished now!"  
 O what a name to find: that name be-fore him, mine!

Take us, O Lord, and all we have known. Shape us, O  
 Lord, and form us in - to your own! Take ev - 'ry heart, and know ev - 'ry  
 sin. Break us, O Lord, that we may be whole a - gain!  
 Break us, O Lord, that we may be whole a - gain!

Isaac Wardell  
 © 2011 Bifrost Arts

**BENEDICTION**

Hebrews 13:20-21

Now may the God of peace,  
 who through the blood of the eternal covenant  
 brought back from the dead our Lord Jesus,  
 that great Shepherd of the sheep,  
 equip you with everything good for doing his will,  
 and may he work in us what is pleasing to him,  
 through Jesus Christ, to whom be glory for ever and ever.

**Amen.**

**SENDING**

Let us go forth and serve the world  
 as those who love our Lord and Savior Jesus Christ.

**Thanks be to God!**



## WELCOME TO GRACE

The various opportunities for growth, connection and service at Grace are listed below.

**GRACE KIDS** If you have any questions about Grace Kids, email [linn@graceseattle.org](mailto:linn@graceseattle.org).

**Resources for Sunday Worship.** Children are always welcome to remain in the service. To participate in a class, children must be signed in each week with KidCheck, our secure check-in system and wear their printed name tag. Check-in stations located in lobby and downstairs.

- Nursery (6 months-2 years), located downstairs in classroom #118
- Preschool (3-5 years), located downstairs in classroom #120. Children are picked up during the *offering*.
- Worship Prep Class (Kinder-3rd grade), located downstairs in classroom #119, children are picked up during *passing of the peace*. This class does not meet on the 5th Sunday of the month.
- Infant room is located in the back of the Sanctuary. Priority for nursing moms.
- Family room is provided in the upstairs chapel with a livestream viewing.
- Kids Activities are available in the lobby each week for use during in-person worship.

**Christian Formation Class.** Christian Formation Classes are offered for children age 2 - 5th grade.

**YOUTH GROUP** All youth ages 12-18 are welcome to join our Youth Group, which meets during Christian Formation Hour the first three Sundays of the month. This year we'll be exploring the practice of prayer together. If you are interested or have questions, email Nelson Hall at [nelson@graceseattle.org](mailto:nelson@graceseattle.org).

**YOUNG ADULTS** Join other young adults in our community as we gather together for lunch the second and fourth Sundays of every month at 12:30 PM. Please contact [nelson@graceseattle.org](mailto:nelson@graceseattle.org) for more details.

## COMMUNITY FORMATION

**Adult Christian Formation Class.** The adult class will be exploring the Gospel of Mark this fall. You can access the audio to all the classes through the QR code.



**Community Groups.** These are groups of 6-12 people that gather in peoples' homes in a variety of neighborhoods in the Seattle area. Email Jamie Afshari, at [jamie@graceseattle.org](mailto:jamie@graceseattle.org) for more information.

**Growth Groups.** These are groups of 3 men or 3 women that are designed to be communities where people can be known and grow (1-year commitment). Please contact Jamie Afshari at [jamie@graceseattle.org](mailto:jamie@graceseattle.org) (women) or John Haralson at [john@graceseattle.org](mailto:john@graceseattle.org) (men).

**SERVING THE CITY** Serving the City (STC) exists to disciple our congregation in service, to care for our neighbors and neighborhoods, and to support people who have been marginalized. We do this by partnering and volunteering with local organizations to support their work in our community—New Horizons, REST, World Relief, and Olive Crest. This ministry year, STC is hosting focused events on caring for the housing insecure and unhoused in our city, we hope you join us as we learn, pray and seek the ways the Lord may be calling us to serve in this area. If you are interested in learning more about STC, contact Drew Billups at [drew@graceseattle.org](mailto:drew@graceseattle.org).

**MUSIC & ARTS.** As a worshipping community, we seek to respond to God with music and visual arts that are winsome, well-crafted, and beautiful. We also find ways to stay connected to the broader artistic and creative community in our neighborhood and city. If you are interested in getting involved with the music and arts at Grace, or want to learn about the Grace Artists group, email Jess Alldredge, Worship Arts Director at [jess@graceseattle.org](mailto:jess@graceseattle.org).

## OTHER GROUPS

**LGBTQ+ / SSA Community in Seattle.** For over five years, Grace has been an active supporter of "Revoice"; a ministry committed to supporting LGBTQ+/SSA individuals who long to follow Jesus. Now, Revoice has established a local chapter here in Seattle in order to offer support and community to our LGBTQ+ / SSA siblings. Join us each month for Sunday lunch, laughter, and a sense of community, here on Capitol Hill! For more information and details select "Seattle" at <https://www.revoice.org/local-chapters>

**Recovery From Sexual Compulsivity Discussion Group.** This group meets Wednesdays at 8 PM via Zoom. It is an anonymous (first-names) male-only meeting that follows a 12-step format open to men of any or no faith. For more information contact Clint Morse (206-915-1669).

**Book Club.** Love reading? Join us once or every month. We read all kinds of literature including best sellers, classics, non-fiction, and young adult fiction. We meet in person at different locations each month - email [office@graceseattle.org](mailto:office@graceseattle.org) for more details.

## EVENTS

**Want to grow closer to God? Consider observing Lent–Holy Week–Eastertide.** Lent is an invitation to take some ownership of your spiritual growth. By God's goodness, making one or two small changes can lead to significant transformation. This year, we are focusing on the ancient Lenten practices of fasting, prayer, and almsgiving to help foster spiritual growth. The Lent–Holy Week–Eastertide booklet for all ages is available through the QR code as well as printed in the foyer. Lent begins with our Ash Wednesday worship on February 14 at 7 PM.



### **Grace Artists Group Meeting** 2/8, 7 PM at The Layne: 1252 16th Ave E

The artists group is a gathering for anyone who considers themselves an artist (whether or not it's their day job!) or simply loves the arts. We'll be meeting on Thursday, 2/8 at The Layne in Capitol Hill to share a few things, hang, and discuss! Email [jess@graceseattle.org](mailto:jess@graceseattle.org) to RSVP and get more details.

**Revoice Leadership Weekend.** Leaders from Revoice will be in Seattle in March to raise awareness for the work they are doing to support LGBTQ+/SSA individuals (and people who love them!) who want to follow Jesus. They will be hosting an event on Saturday, March 9 (10:00 AM to noon) for parents of LGBTQ+ folks, and they will be leading the Adult Christian Formation Hour on Sunday, March 10. Sign up for the Saturday parent event through the QR code.



**Grace 101.** Our next new members class will be Friday, 3/15, 7-9 PM & Saturday, 3/16 9-1 PM. Friday evening will be a fellowship time over dinner. On Saturday, we will dive into the ministries of Grace, light breakfast and lunch will be served on Saturday. Childcare is not provided, but babes in arms are welcome, or older kids who would be content to watch a movie during the sessions are welcome. Sign up through the QR code by Sunday, 3/10.



## **2024 Ministry Year Key Dates**

### **February**

- Sunday, 2/11 - Jamie's Ordination Service with a celebration reception to follow.
- Wednesday, 2/14 - Ash Wednesday Service @ 7 PM
- Saturday, 2/24 - Seattle Sickle Cell Task Force Annual Gospel Concert at 5:30 PM at Trinity Church Seattle: 6512 23rd Ave NW

### **March**

- Sunday, 3/3 - STC Lunch with Bernard Troyer from *The Block Project*. RSVP by emailing [drew@graceseattle.org](mailto:drew@graceseattle.org)
- Sunday, 3/6 - Evening Prayer Service @ 7 PM
- Saturday, 3/9 - Parents of LGBTQ+ (with Revoice Leadership) @ 10 AM Sign up through the QR code (above).
- Sunday, 3/10 - Revoice Leadership at Grace Adult Christian Formation Class.
- Friday, 3/15, 7-9 PM & Saturday, 3/16 9-1 PM - Grace 101. Details and sign up above.
- Friday, 3/29 - Good Friday Service @ 7 PM

### **April**

- Wednesday, 4/10 - Sunrise Prayer Service @ 6:15 AM at Maple Leaf Reservoir Park
- Friday, 4/12/2024 - Sunday 4/14/2024 - Men's Retreat at Rainbow Lodge
- Sunday, 4/21 - STC Lunch: Panel Discussion

### **May**

- Wednesday, 5/1 - Sunrise Prayer Service @ 5:30 AM at Mount Baker Beach
- Friday, 5/3/2024 - Sunday 5/5/2024 - Women's Retreat at Rainbow Lodge
- Sunday, 5/21 - STC Lunch: Grace discernment, brainstorming and prayer

## ANNOUNCEMENTS

**12 Count Egg Cartons Still Needed:** We still need 10 more 12-count egg cartons for the Lent/Easter Craft - please bring them clean and empty to church and put them in the designated bin, if you have them!

**Women's Retreat Planning Committee.** If you are interested in helping plan this year's Women's Retreat (Friday, 5/3 - Sunday 5/5), email [Jamie@graceseattle.org](mailto:Jamie@graceseattle.org).

**Operation Nightwatch** is one of our partner organizations that cares for people experiencing homelessness. We are looking for additional people to help drive people from Nightwatch's main facility (south of Downtown), to the overnight shelter facility in Madrona. The commitment would be 1-2 hours, once every 3 or 4 weeks. Contact [hadden.eric.a@gmail.com](mailto:hadden.eric.a@gmail.com) for more information.

**Easter Baptisms.** If you or someone in your household would like to be baptized on Easter Sunday (3/31), please email [office@graceseattle.org](mailto:office@graceseattle.org).

---

## GRACE MINISTRY PARTNERS

Grace partners with a number of organizations that aid in spiritual and emotional development.

### SOUL CARE SEATTLE

Soul Care Seattle is an urban retreat and spiritual direction ministry located on Capitol Hill. They have many different ways to help you grow in your relationship with God.

Soul Care Seattle is located at **The Layne**: 1252 16th Ave E. Sign up for all offerings through the QR code.



**Listening Prayer Group.** A Listening prayer group is a small group that meets with the intention of building a community around the word of God. The passages will focus this year on the questions Jesus asked his followers and asks us today. For more information and to RSVP, scan the QR code above. Meetings are at 7 PM at The Layne on these Thursdays: 2/22, 3/21, 4/18, and 5/16

**Half-day Retreat schedule at the Layne** (Saturdays, 8:45 AM to 12 PM). Why a silent retreat? How many of us have the space to be truly quiet and listen to ourselves or listen to God about ourselves? These retreats are available to those who would like to experience silence & prayer in community free of distractions, defenses, calendars, and performance. You will start, and end, as a larger group, but will have personal time to do any of the following: contemplate the prayers and writings that are given to you, walk in the beautiful parks around The Layne, or rest on the porch or other areas in the house. Scan the QR code above to register and email [renee@soulcareseattle.com](mailto:renee@soulcareseattle.com) if you have any questions. The silent retreats are held on these Saturdays: 2/10, 3/16, 4/20 and 5/18

**Centering Prayer Group.** Centering Prayer consists of sitting in silence with God - beyond thoughts, words, and emotions and opening our mind, heart and whole being to the Trinity. We begin each session praying a Psalm together, a 20-minute period of silent Centering Prayer, followed by Sacred Reading of Scripture (Lectio Divina). Scan the QR code above to register (no cost). If you have any questions email [donna@soulcareseattle.com](mailto:donna@soulcareseattle.com). The time of fellowship and prayer is from 7 to 8:30 PM and are held on these Thursdays: 2/15, 3/7, 4/25 and 5/9 via Zoom.

**Spiritual Direction.** Find out more about Spiritual Direction and how to sign up through the QR code above.

### BELL TOWER COUNSELING

Bell Tower is a non-profit counseling center in Seattle that provides evidence-based and biblically-sound counseling services to those in need. They are committed to offering generous scholarship resources to clients so that financial need is never a barrier to receiving high-quality counseling care. Learn more about becoming a donor, scheduling an intake for individual counseling as well as the groups they have available through the QR code.



## WORSHIP SCHEDULE

02/04 Fifth Sunday of the Epiphany  
Christian Formation Hour 9 AM  
Worship Service 10:15 AM  
(In-Person and Livestream)

02/11 Sixth Sunday of the Epiphany  
Christian Formation Hour 9 AM  
Worship Service 10:15 AM  
(In-Person and Livestream)  
Jamie's Ordination Celebration following  
worship

02/14 Ash Wednesday  
Worship Service 7:00 PM  
(In-Person and Livestream)

02/18 First Sunday in Lent  
Christian Formation Hour 9 AM  
Worship Service 10:15 AM  
(In-Person and Livestream)

02/25 Second Sunday in Lent  
Worship Service 10:15 AM  
(In-Person and Livestream)

## STAFF

Rev. John Haralson, Pastor [john@graceseattle.org](mailto:john@graceseattle.org)  
Drew Billups, Assistant Pastor, Serving the City [drew@graceseattle.org](mailto:drew@graceseattle.org)  
Jamie Afshari, Assistant Pastor of Community Formation [jamie@graceseattle.org](mailto:jamie@graceseattle.org)  
Jess Alldredge, Worship Arts Director [jess@graceseattle.org](mailto:jess@graceseattle.org)  
Linn Haralson, Grace Kids Director [linn@graceseattle.org](mailto:linn@graceseattle.org)  
Nelson Hall, Assistant Pastor of Youth & Young Adults [nelson@graceseattle.org](mailto:nelson@graceseattle.org)  
Nicole Hall, Administrator [office@graceseattle.org](mailto:office@graceseattle.org)  
Noni Wilson, Bookkeeper [bookkeeper@graceseattle.org](mailto:bookkeeper@graceseattle.org)

## MINISTRY COORDINATORS

Angela Wheeless, Meals Ministry [meals@graceseattle.org](mailto:meals@graceseattle.org)  
Jo Taniguchi, Premarital Mentoring [taniguchijo@gmail.com](mailto:taniguchijo@gmail.com)  
Benevolence Fund, [benevolence@graceseattle.org](mailto:benevolence@graceseattle.org).  
*Sara Billups, Eric Hadden, Rebecca Ifland and Tamarack Randall serve  
on the benevolence team. Email the address above or any of them  
individually if you have financial need.*

## VESTRY

Nate Andrews [nateofgraceseattle@gmail.com](mailto:nateofgraceseattle@gmail.com)  
Sara Billups [sara@sarabillups.com](mailto:sara@sarabillups.com)  
Eric Hadden [hadden.eric.a@gmail.com](mailto:hadden.eric.a@gmail.com)  
Renee Huie [reenehuie@gmail.com](mailto:reenehuie@gmail.com)  
Rebecca Ifland [becca.ifland@gmail.com](mailto:becca.ifland@gmail.com)  
Tamarack Randall [tamarack.graceseattle@gmail.com](mailto:tamarack.graceseattle@gmail.com)  
Darik Taniguchi [dariktaniguchi@gmail.com](mailto:dariktaniguchi@gmail.com)

## PASTORAL CARE

Not sure who to contact? If you have needs or resources you'd like to offer the community, please contact us at [pastoralcare@graceseattle.org](mailto:pastoralcare@graceseattle.org).

## GIVE

You can give financially to Grace in many ways.

- General Fund. This goes to support the mission and worship of our congregation.
- Benevolence Fund. This goes to help those in our congregation and community who are facing unexpected financial need.
- Serving the City Fund. This goes directly to our efforts to serve the hurting and marginalized in our city.

You can give to any of these funds online through the QR Code.



Financial Update (as of 12/31/2023):

General fund: YTD giving - 807,418.42, Budget - 969,996  
Serving the City: YTD giving - 34,977, Budget - 150,000

Grace Church Seattle is a member congregation of the Churches for the Sake of Others Diocese of the Anglican Church in North America.

Worship Location 1300 E Aloha St, Seattle, WA 98102  
and Livestream on Youtube

Mailing Address 505 Broadway E, PMB 324, Seattle, WA 98102 \*\*\*\*All mail must be addressed to "Grace Church Seattle" with attn. to the staff member receiving it.\*\*\*\*

[graceseattle.org](http://graceseattle.org)  
[office@graceseattle.org](mailto:office@graceseattle.org)

## Emergency Plan

In the unlikely event of an emergency or evacuation, all children attending a Grace Kids Class will be escorted immediately from their classrooms to the farthest edge of the front lawn, at the corner of E. Aloha St. and 13th Ave. E., where they can be reunited with their parents or guardians.