



HMW

7.8 PHT

- 7,800kg high efficiency 2 stage planetary winch
- Internal 100% holding, fail-safe braking system-spring applied hydraulic release
- Compact envelope, saving weight and installation space
- Heat treated reinforced cast steel body
- Large capacity drum with roller fairlead and cable tensioner as standard
- High torque hydraulic motor with LCV
- Option of manual or pneumatic clutch actuator for easy clutch operation.
- EN14492-1 Power driven winches and CE machinery directive 2006/42/EC

Applications

Towing & Recovery
Specialty Vehicle
Mining & Construction
Machinery and House Movers
Power Companies and Tree Arborists
General Industrial and Commercial

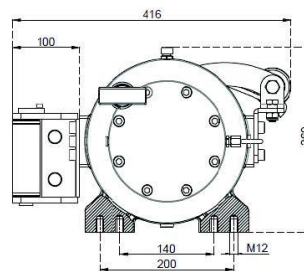
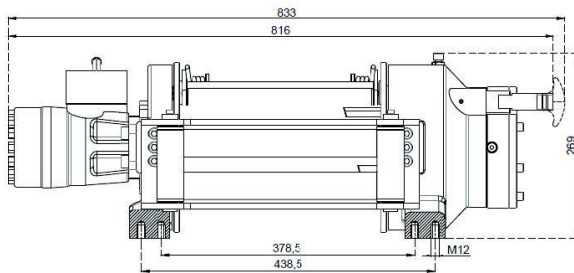
Rope Winding Layer	Pulling Capacity kg/lbs	Rope Speed m/min – ft/min	Rope Length m / ft
1	7800 / 17200	13/43	7/25
2	6487 / 14299	15/51	16/53
3	5552 / 12238	18/60	27/89
4	4853 / 10696	21/69	38/127
5	4310 / 9499	23/78	52/173

Specifications

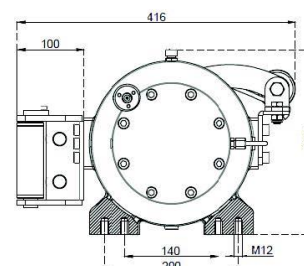
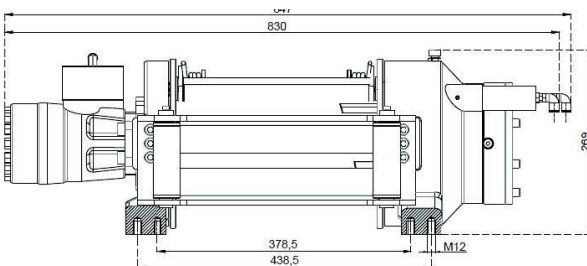
Max. pulling capacity (kg / lbs) : 7,800kg (17,200lbs)
Max. rope length (m) : 52m
Recommended wire rope (mm) : 14 mm
Hydraulic motor (cc / in³) : 400 cc (24 in³)
Max. pump flow (L/min) : 75 L/min
Gear ratio : 52:1
Oil type and capacity : 85W 90 – 0.9 L
Max. working pressure (bar / psi) : 220 bar (3190 psi)

DIMENSIONS

Manual Clutch



Air Clutch



Equipment

Cable tensioner
Roller Fairlead

Optional

Air Clutch

Physical

Winch : 80kg
Roller Fairlead : 11kg
Cable Tensioner : 4.5kg
Mounting Bolts : 16 x M12 8.8
Hydraulic Inlets : G1/2"

WARNING!

A-B lines must be open to tank with the control valve in centre position.

This winch is designed and manufactured for pulling, don't lift person or material.

Always keep last 5 wraps of cable on the drum.

The technical details given above are just for information.

HAMMER WINCH reserves the right to change the technical details.

Pneumatic working pressure: Min 9 bar – Max 12 bar (Min 30psi – Max 174 psi)