

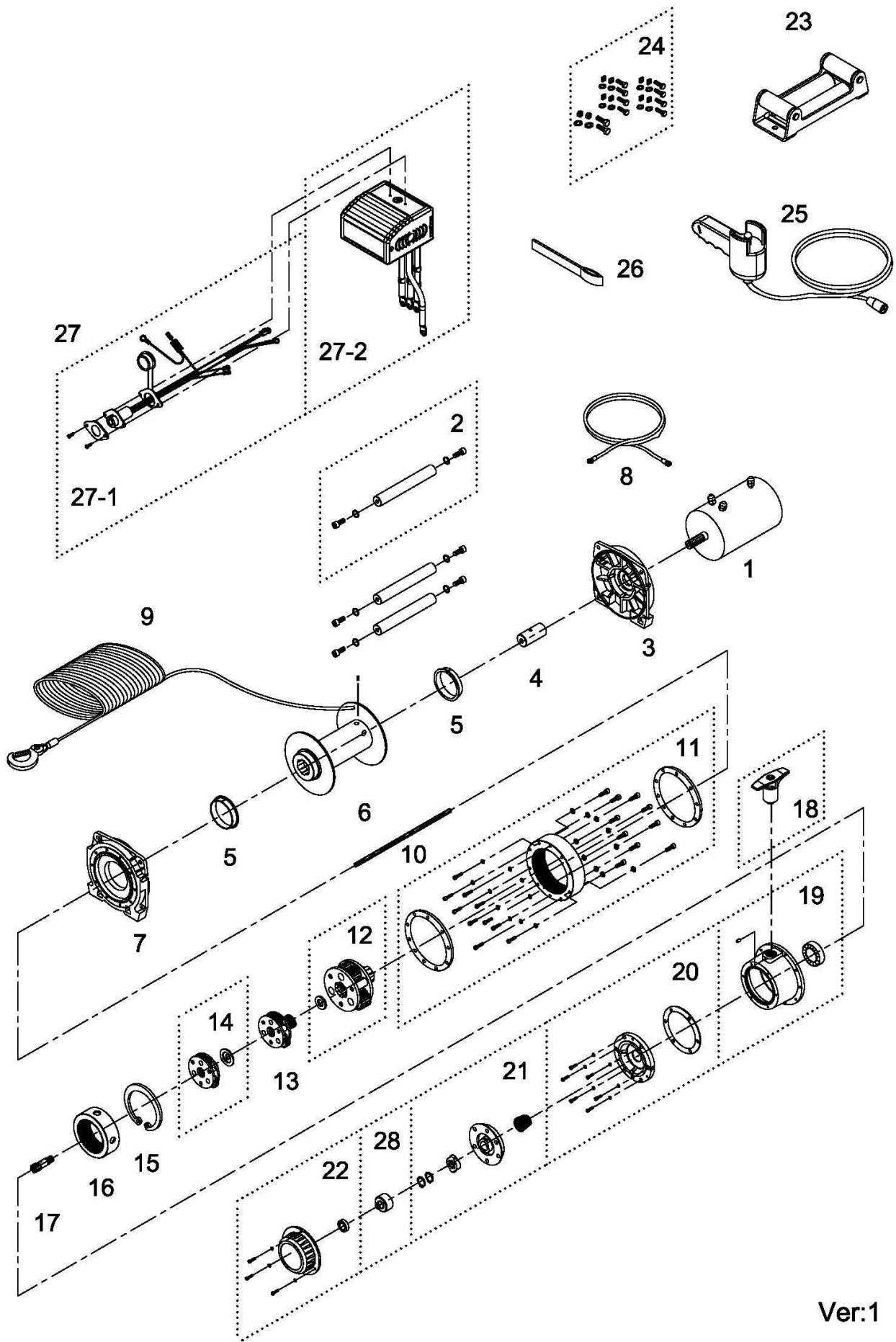
P/N 85228

DV-12 24V

PART PRICE LIST

No	PN	Description	Q'ty
1	881297	Motor 24V; 2,690w/3.6hp w/thermal switch, series wound motor	1
2	880045	Tie bar kit	3
3	880046	Motor support rack	1
4	880047	Motor coupling	1
5	880048	Drum bushing	2
6	882162	Drum kit	1
7	880050	Gearbox support rack	1
8	880009	Grounding lead	1
9	880052	Wire rope w/hook	1
10	880053	1st shaft	1
11	880054	3rd ring gear kit	1
12	881944	3rd stage carrier	1
13	880056	2nd stage carrier	1
14	880057	1st stage carrier	1
15	880058	Retaining ring	1
16	880059	1st & 2nd ring gear	1
17	880060	1st pinion	1
18	880061	Clutch kit	1
19	880062	Gear box kit	1
20	880063	Brake base kit	1
21	880021	Cone brake disc kit	1
22	880065	Brake cover kit	1
23	880066	Roller fairlead, WA-0502	1
24	880067	Mounting hardware	1
25	880126	Remote control	1
26	880026	Handsaver strap	1
27	881165	Detachable control box 24V	1
27-1	881374	Remote socket kit 24V	1
27-2	881401	Detachable control pack 24V	1

28	881434	Brake clutch base	1
----	--------	-------------------	---



Ver:1