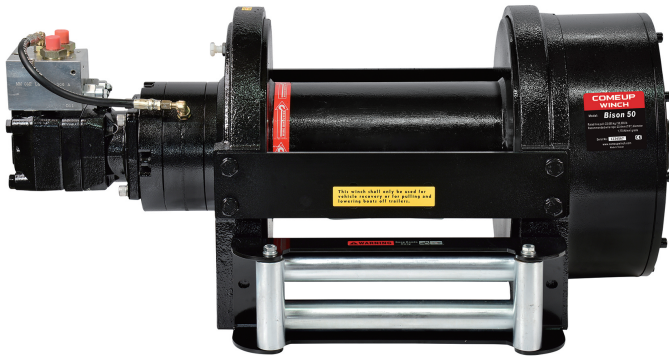


Bison 50

50, 000lb Hydraulic winch



PN 685010 Std Drum

Features Include

- Robust and reliable heavy duty winch supplied with roller fairlead and rope tensioner.
- Hardened 2-stage planetary gear train with 44:1 gear ratio provides rapid line speed.
- Built-in pneumatic free-spool clutch for rapid wire-rope payout.
- Fail-safe, spring applied, hydraulically released Multi-Disc Brake (MDB) holds full load.
- Recommended for heavy duty trailers, roll-back carriers and commercial recovery application.
- 2-way counterbalance valve provides smooth, controlled lowering of loads..
- Meets SAE J706 CE machinery directive 2006/42/EC

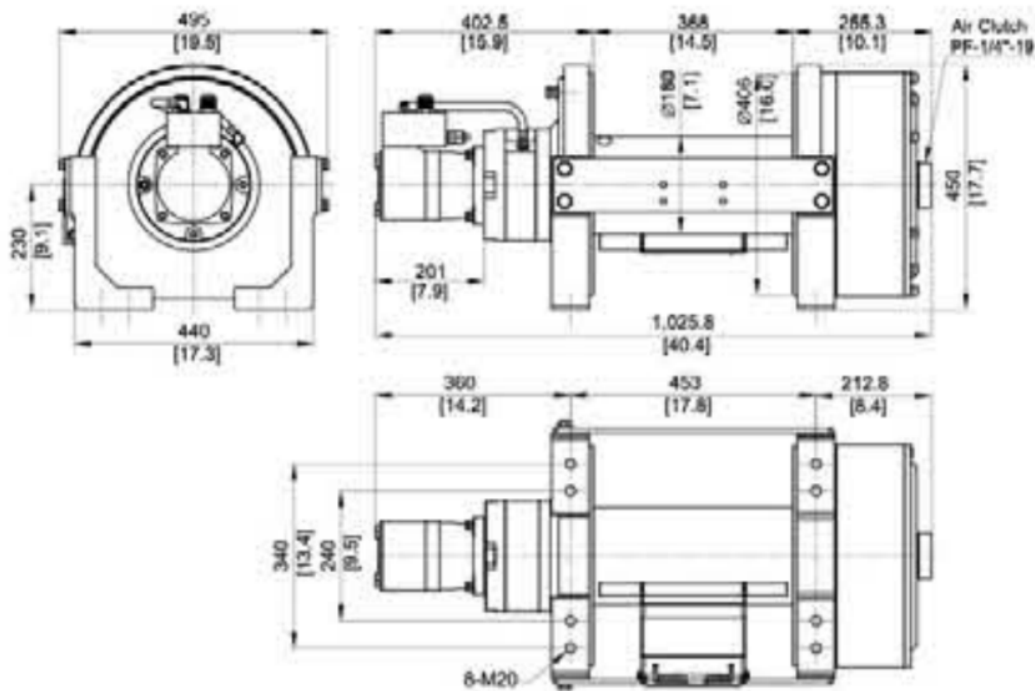
Specifications

- Rated Line Pull: 22,680 kg / 50,000 lb
- Line Speed: 5.7 mpm @100l/min at first layer of rope
- Operation Pressure: 200 bar/2 900 psi
- Max Oil Flow: 100 l/min
- Hydraulic Motor: 251.8 cc
- Gear Train: 2-stage Planetary Gears
- Gear Ratio: 44:1
- Winch Construction: Cast Housings with Steel Drum
- Clutch (Freespooling): Output shaft disengaged
- Brake: Multi-Disc Brake (MDB) patented
- Rotation of Winch: Wire rope under-wound orientation only
- Drum Barrel Diameter: 180 mm
- Drum Flange Diameter: 406 mm
- Distance Between Flanges: 368 mm Std drum
- Wire Rope Recommended: 22.4 mm x 48 mm Std drum
1,770 N/mm² breaking strength of 305 kN is required for SAEJ706 ratings

Line Pull and Rope Capacity

ROPE LAYER	PULL BY LAYER (KG / LB)	LINE SPEED @ 100 L/MI N (MPM)	TOTAL ROPE ON DRUM (M)
			STD DRUM
1	22,680 / 50,000	5.7	10
2	18,570 / 40,940	7.0	22
3	15,720 / 34,660	8.3	36
4	13,630 / 30,050	9.6	48

Dimensions mm/inch



Packaging

Winch Weight: 394 kg
 Gross Weight: 445 kg
 Box Dimensions: 1,760 x 790 x 630 mm

Standard Accessories

Roller fairlead
 Counterbalance Valve
 Cable Tensioner

WARNING!

- Do not use winch to transport, lift or otherwise move personnel.
- The rated line pull shown is based on the first layer of wire rope on the drum.
- The wire rope must remain on the drum at all time with at least 5 wraps.

Warranty

Every winch is guaranteed against defects in workmanship and materials for 12 months from date of purchase.