

# Bison 30

## 30,000 lb Hydraulic Winch



PN 683030 Std Drum (175 bar/2540 psi)  
PN 683352 Long Drum (175 bar/ 2540 psi)

### Features Include

- Robust and reliable heavy duty winch supplied with roller fairlead and rope tensioner.
- Hardened 2-stage planetary gear train with 41.1 gear ratio provides rapid line speed.
- Built-in pneumatic free-spool clutch for rapid wire-rope payout.
- Fail-safe, spring applied, hydraulically released Multi-Disc Brake (MDB) holds full load.
- Recommended for heavy duty trailers, roll-back carriers and commercial recovery application.
- 2-way counterbalance valve provides smooth, controlled lowering of loads..
- Meets SAE J706 CE machinery directive 2006/42/EC

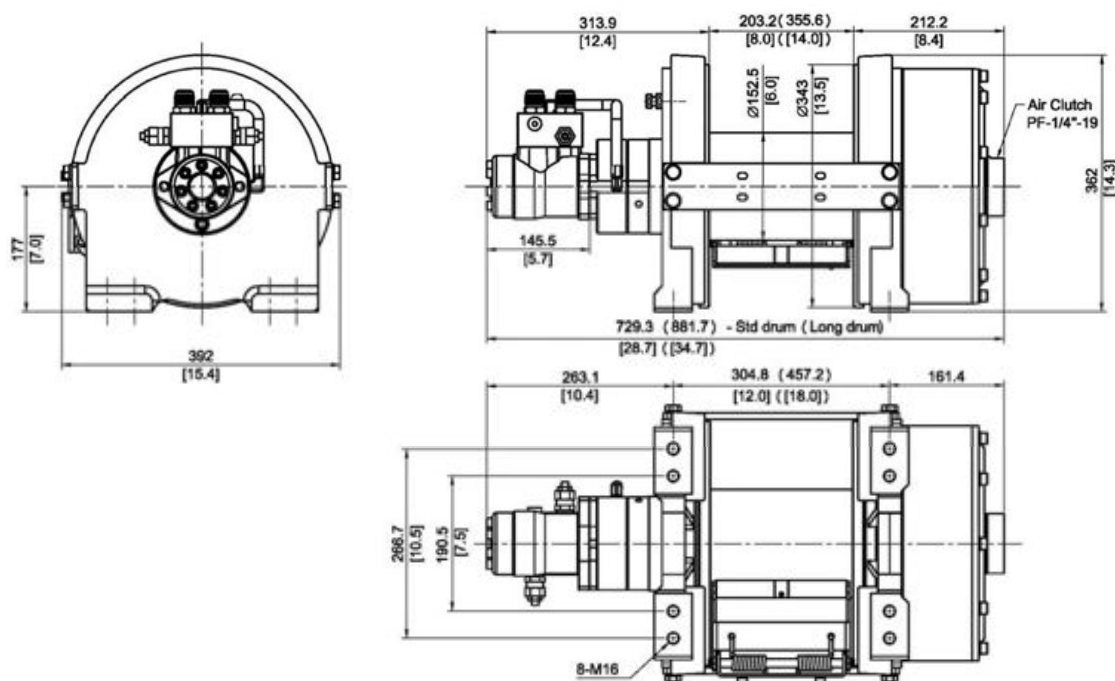
### Specifications

• Rated Line Pull:	13,600 kg / 30,000 lb
• Line Speed:	5.0 mpm 60 l/min at first layer of rope
• Operation Pressure:	175 bar/2 540 psi
• Max Oil Flow:	60 l/min
• Hydraulic Motor:	155.7 cc
• Gear Train:	2-stage Planetary Gears
• Gear Ratio:	41:1
• Winch Construction:	Cast Housings with Steel Drum
• Clutch (Freespooling):	Output shaft disengaged
• Brake:	Multi-Disc Brake (MDB) patented
• Rotation of Winch:	Wire rope under-wound orientation only
• Drum Barrel Diameter:	152 mm
• Drum Flange Diameter:	343 mm
• Distance Between Flanges:	203 mm Std Drum, 355 mm Long Drum
• Wire Rope Recommended:	16 mm x 43 m Std drum 16 mm x 75 m Long drum 1,960 N/mm2 breaking strength of 179 kN required for SAE J706 ratings

## Line Pull and Rope Capacity

ROPE LAYER	PULL BY LAYER (KG / LB)	LINE SPEED @ 60 L/MIN (MPM)	TOTAL ROPE ON DRUM (M)	
			STD DRUM	LONG DRUM
1	13,600 / 30,000	5.0	6	11
2	11,438 / 25,216	5.9	14	25
3	9,864 / 21,745	6.9	22	40
4	8,670 / 19,115	7.8	32	58
5	7,735 / 17,052	8.8	43	75

## Dimensions mm/inch



## Packaging

Winch Weight: 197 kg  
 Gross Weight: 235 kg  
 Box Dimensions: 1,040 x 620 x 510 mm (Long Drum).

## Standard Accessories

Roller fairlead  
 Counterbalance Valve  
 Cable Tensioner

## WARNING!

- Do not use winch to transport, lift or otherwise move personnel.
- The rated line pull shown is based on the first layer of wire rope on the drum.
- The wire rope must remain on the drum at all time with at least 5 wraps.

## Warranty

Every winch is guaranteed against defects in workmanship and materials for 12 months from date of purchase.