

Bison 20

20,000 lbs Hydraulic Recovery Winch



PN 682030 Std. drum (175 bar / 2 540 psi)
PN 682169 Long drum (175 bar / 2 540 psi)

Features Include

- Robust and reliable heavy duty winch supplied with rollers fairlead and rope tensioner.
- Hardened 2-stage planetary gear train with 30.1 gear ratio provides faster line speed.
- Built-in air clutch for rapid wire rope payout.
- The Multi-Disc Brake (MDB) patented for holding full load.
- Built for heavy duty commercial applications where reliability and performance are paramount
- Roller fairlead, cable tensioner and 2-way counterbalance valve supplied.
- Meets SAE J706 CE machinery directive 2006/42/EC or EN 14492-1:2006 Power Driven Winches.

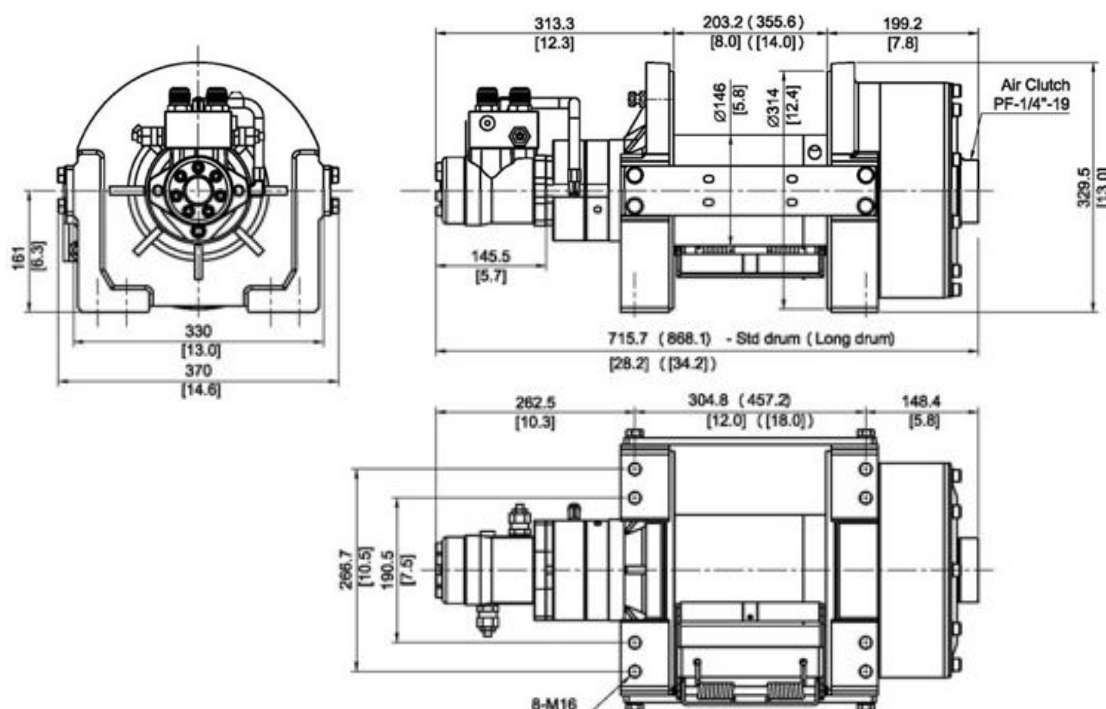
Specifications

• Rated Line Pull:	9,070 kg / 20,000 lb
• Line Speed:	7.1 mpm 60 l / min at first layer of rope
• Operation Pressure:	175 bar / 2 540 psi
• Max Oil Flow:	60 l/min
• Hydraulic Motor:	155.7 cc
• Gear Train:	2-stage Planetary Gears
• Gear Ratio:	30:1
• Winch Construction:	Cast Housings with Steel Drum
• Clutch (Freespooling):	Output shaft disengaged
• Brake:	Multi-Disc Brake (MDB) patented
• Rotation of Winch:	Wire rope under-wound orientation only
• Drum Barrel Diameter:	146 mm
• Drum Flange Diameter:	314 mm
• Distance Between Flanges:	203.2 mm Std Drum, 355.6 mm Long Drum
• Wire Rope Recommended:	14 mm x 43 m Std drum 14 mm x 80 m Long drum 1,960 N / mm ² breaking strength of 137 kN is required for SAE ratings 16 mm x 30 m Std drum 16 mm x 55 m Long Drum 1,960 N / mm ² breaking strength of 179 kN required for EN-14492-1 ratings

Line Pull and Rope Capacity

ROPE LAYER	PULL BY LAYER (KG / LB)	LINE SPEED @ 60 L/MIN (MPM)	TOTAL ROPE ON DRUM (M)			
			STD DRUM		LONG DRUM	
			14mm	16mm	14mm	16mm
1	9 070 / 20 000	7.1	7	6	12	11
2	7 719 / 17 017	8.3	15	13	27	24
3	6 719 / 14 813	9.5	24	21	43	39
4	5 948 / 13 113	10.8	34	30	62	55
5	5 335 / 11 762	12.0	43	x	80	x

Dimensions mm/inch



Packaging

Winch Weight: 150 kg
Gross Weight: 195 kg
Box Dimensions: 1,025 x 500 x 510mm

Standard Accessories

Roller fairlead
Counterbalance Valve
Cable Tensioner

WARNING!

- Do not use winch to transport, lift or otherwise move personnel.
- The rated line pull shown is based on the first layer of wire rope on the drum.
- The wire rope must remain on the drum at all time with at least 5 wraps.

Warranty

Every winch is guaranteed against defects in workmanship and materials for 12 months from date of purchase.