

RD7CTS Remote Display

Programming Instructions

1. Powering On

For installation instructions, refer to document DI00028 (PROTEUS RD7CTS Installation Instructions).

If plugging into an **OMNTEC OEL8000II**'s RS-232 port, make sure it is connected to **COMM2** or **COMM3** of the motherboard and set for **Remote Mode**.

When the **RD7CTS** is powered on and not connected to an ATG, the display will show the screen below. (See Figure 1.0)

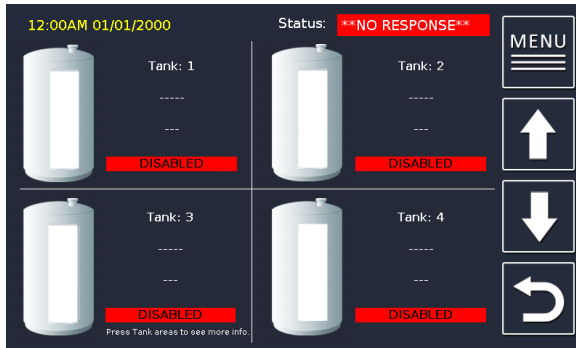


Figure 1.0

After connecting to an ATG, the **RD7CTS** will update its information to show the correct time and date as well as Inventory. (See Figure 2.0)

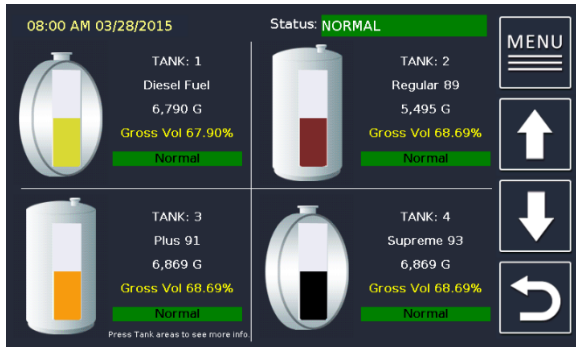


Figure 2.0

2. Navigating to Setup

From the System Status Menu, press **HELP MENU**. (See Figure 3.0)

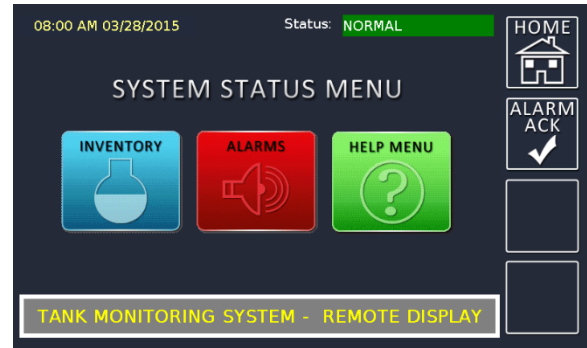


Figure 3.0

In **HELP MENU** press **SETUP**. Default password is "000000" (See Figure 4.0)

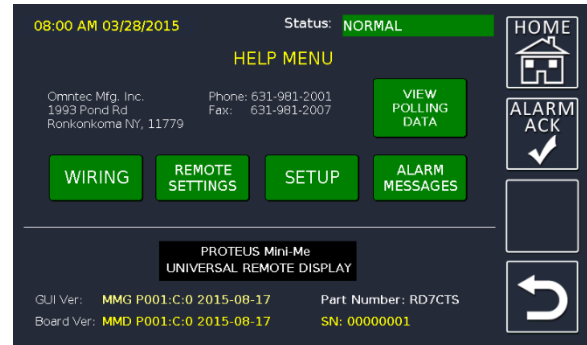


Figure 4.0

Below is the **SETUP MENU**. (See Figure 5.0)

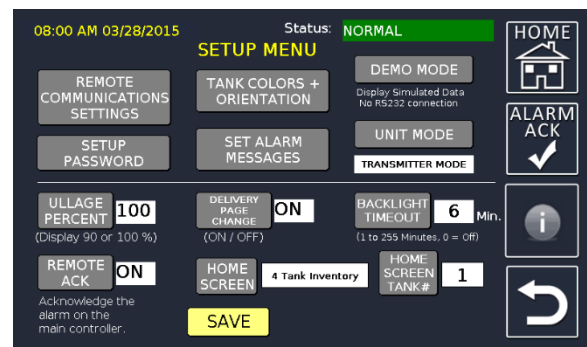


Figure 5.0

RD7CTS Remote Display

Programming Instructions

3. Changing Parameters

Pressing the information button will show the user what each parameter will change within the **SETUP MENU**. Most parameters can be changed to the user's preference. Use the info page as a guide to program these parameters. (See Figure 6.0)

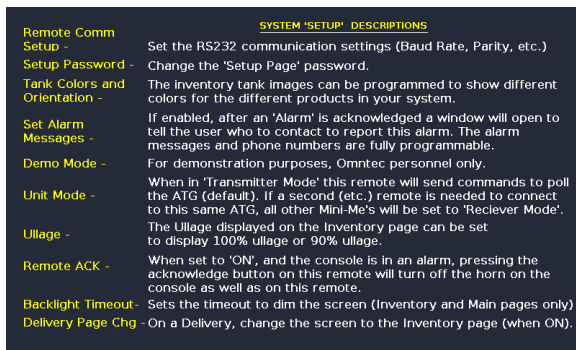


Figure 6.0

4. Changing Baud Rate

To change the Baud Rate, select **Remote Communications Settings**. The baud rate and other options will cycle through preset values each time you press **Change**. Match these to the main ATG. Selecting **View Polling Data** will allow the user to view communications between the Mini-Me and main ATG. (See Figure 7.0)

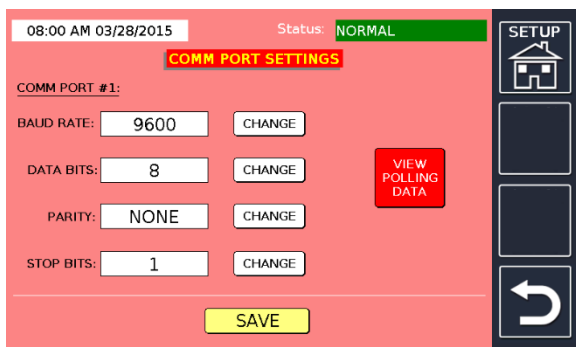


Figure 7.0

5. Changing Tank Colors & Orientation

Select **Tank Colors + Orientation** to choose different colors for each tank. The user may also choose to view the tank profile as horizontal or vertical. (See Figure 8.0)

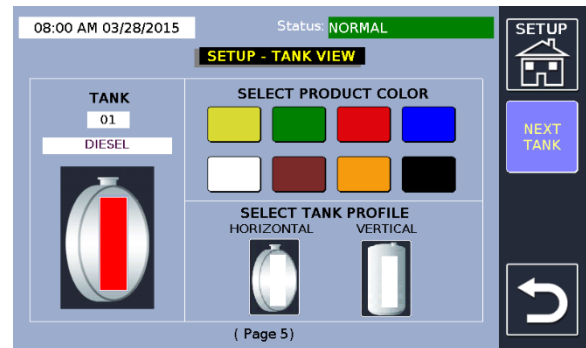


Figure 8.0

6. Unit Mode

When a single Mini-Me is connected via RS-232, the unit mode should be set for **Transmitter**. When multiple Mini-Me's are connected via RS-232-422 extender, the farthest Mini-Me from the ATG should be set for **Transmitter** and each additional Mini-Me in between should be set for **Receiver**. When using RS-485, all Mini-Me's should be set for **Receiver**. (See Figure 9.0)

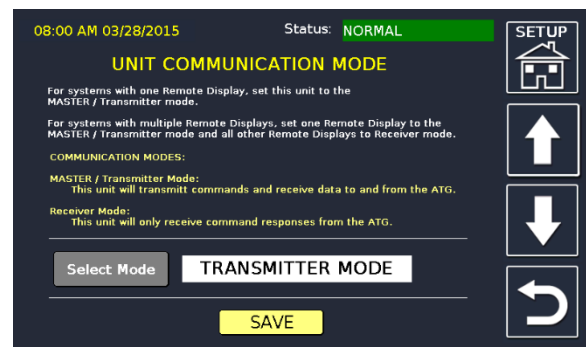


Figure 9.0

****Important: Always press SAVE when finished.****