



# OMNTEC

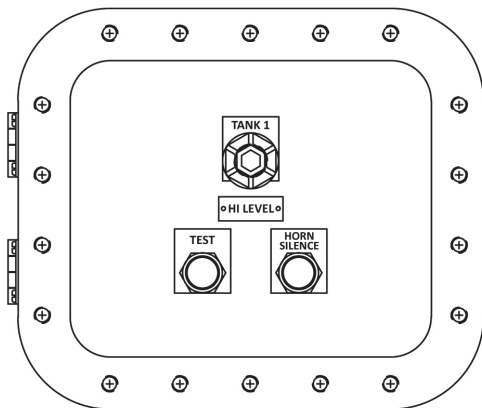
Advanced Tank Monitoring & Leak Detection



1. Open the camera app
2. Focus the camera on the QR code by gently tapping the code
3. Follow the instructions on the screen to view PDF file

# RAS-1-EXP

# INSTALLATION GUIDE



## EXPLOSION PROOF REMOTE ANNUNCIATOR

Revision 2410

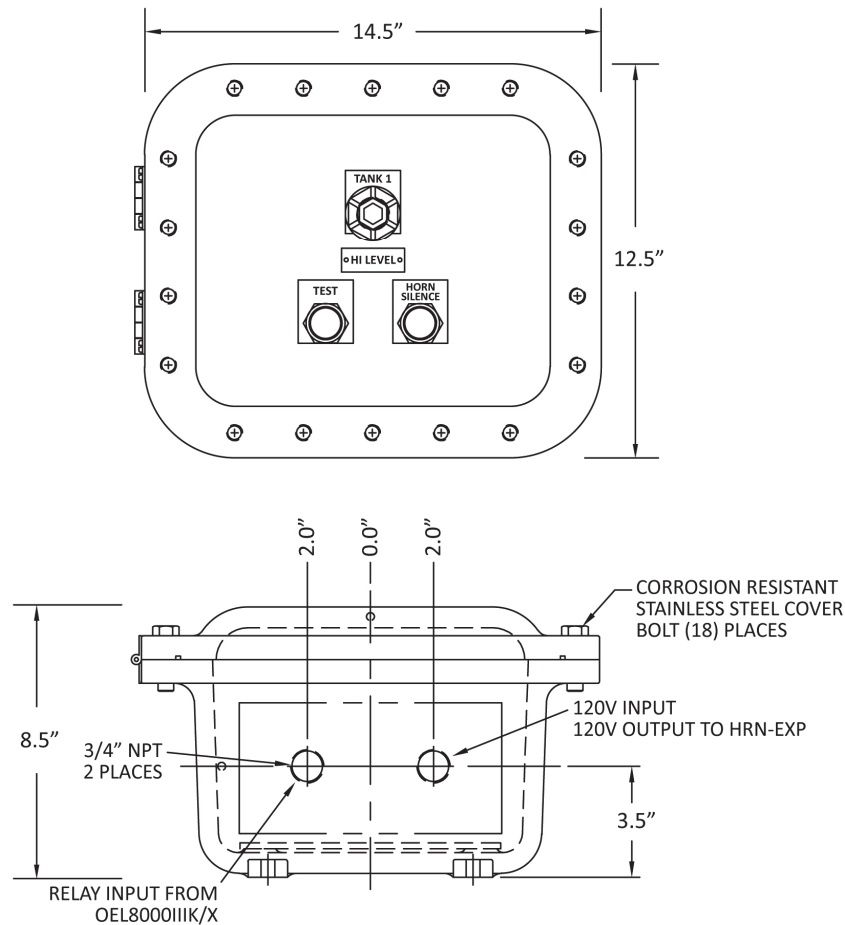
Document No. RAS-1-EXP

## TABLE OF CONTENTS

<b>RAS-1-EXP SPECIFICATIONS</b> .....	3
<b>RAS-1-EXP WIRING DIAGRAM</b> .....	4
<b>HRN-EXP HORN</b> .....	5

**RAS-1-EXP**

**EXPLOSION PROOF REMOTE ANNUNCIATOR**



**RAS-1-EXP SPECIFICATIONS**

**POWER INPUT**

85-125 VAC, 47-440 Hz  
16 Watts maximum

**REMOTE CABLE**

Shielded 22 AWG UL-E118830 CM  
Maximum length 2000 feet

**OPERATING TEMPERATURE**

-40° to 140° F

**ENCLOSURE RATINGS**

NEMA 7, NEMA 4X, NEMA 9, NEMA 3  
Class I Div 1 & 2 Groups B, C & D  
Class II Div 1 & 2 Groups E, F & G  
Class III

**DIMENSIONS**

(W) 14.5" x (H) 12.5" x (D) 8.5"

**VISUAL CONSOLE**

**RED LIGHT** - Indicates high level from OEL8000IIIK or OEL8000IIIX

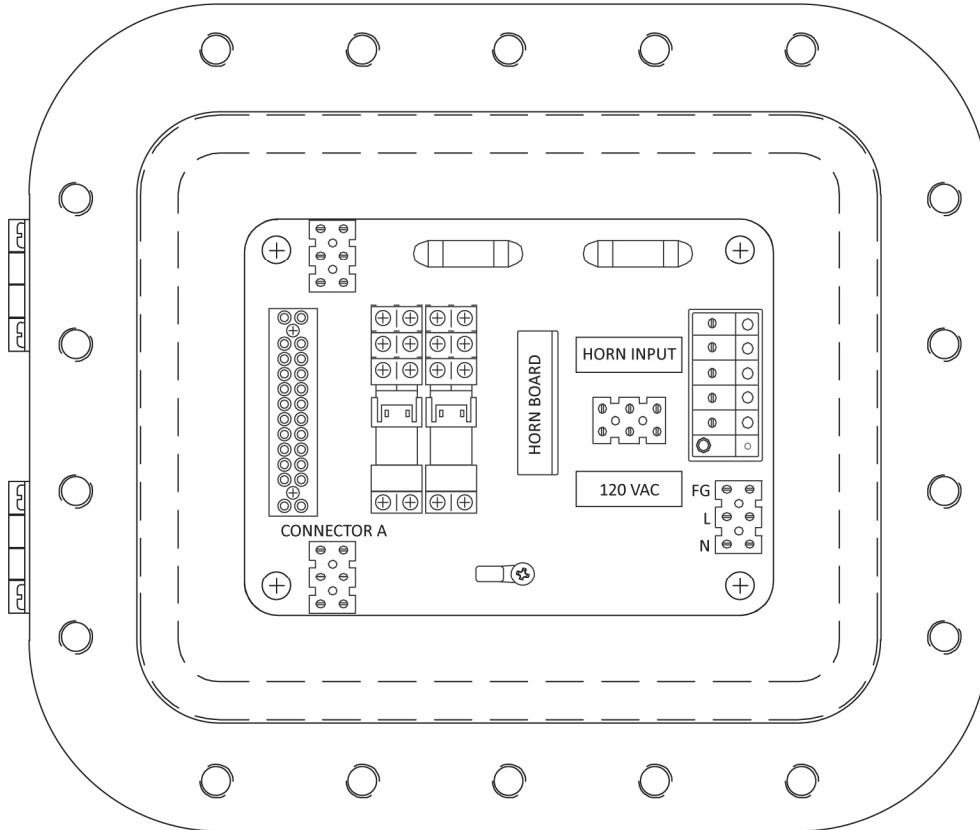
**TEST BUTTON** - When pressed will test lights and audible horn

**HORN SILENCE BUTTON** - When pressed silences the audible alarm

**CONTROL INPUT**

Normally open dry contact from OEL8000IIIK or OEL8000IIIX

# RAS-1-EXP WIRING DIAGRAM



**WIRES FROM XB-RB8 OR MCU J16  
CONNECTOR A**

1	RED	NORMALLY OPEN
2	BLACK	COMMON
3	UNUSED	

**WIRES FROM HORN INPUT CONNECTOR  
TO HRN-EXP**

1	BLACK
2	UNUSED
3	WHITE

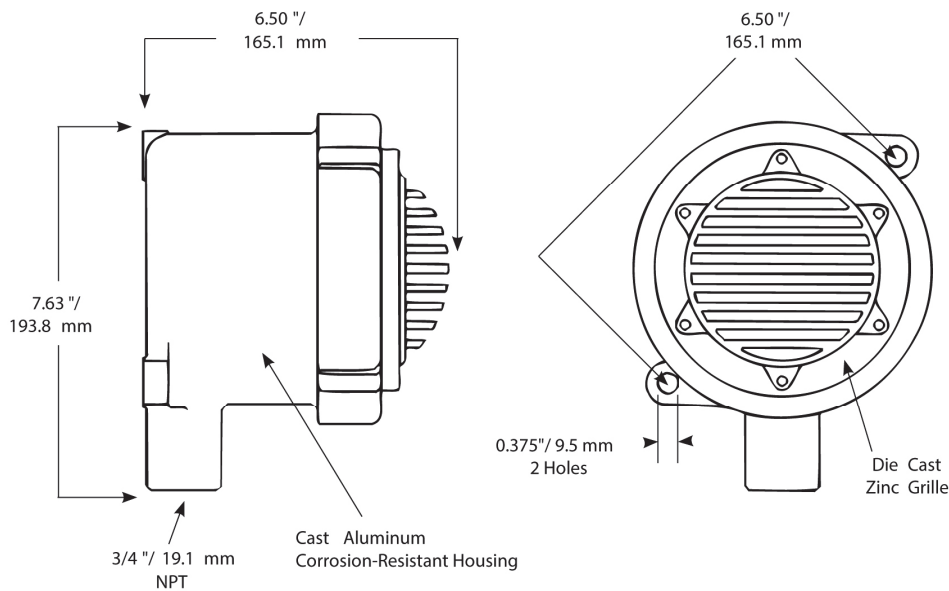
## HRN-EXP HORN

### EXPLOSION PROOF HORN

These explosion-proof horns are constructed for safety in hazardous environments. They have heavy-duty die cast aluminum housings which are tapped for 3/4" conduit. HRN-EXP horns are corrosion-resistant vibrating horns with stainless steel diaphragms and are available in 120VAC, and features an internal volume control.

The HRN-EXP explosion proof horn is UL and cUL Listed for Class I, Division 1, Groups C and D; Class II, Division 1, Groups E, F, and G; Class III and CSA (Canadian Standards Association) certified.

These vibrating and resonating explosion-proof horns are designed for locations such as refineries, laboratories, mine or grain elevators where the danger of explosion or fire exists.



### SPECIFICATIONS

#### OPERATING TEMPERATURE

-13°F to 104°F -25°C to 40°C

#### NET WEIGHT

(31X) 7.5 lbs. 3.4 kg

#### SHIPPING WEIGHT

(31X) 8.1 lbs. 3.7 kg

#### INPUT

120V from OMNTEC controllers

\*Consult factory for compatible controllers

#### RATINGS

- UL and cUL Listed for Class I, Division 1, Groups C and D; Class II, Division 1, Groups E, F, and G; Class III
  - CSA Certified
- Corrosion resistant cast aluminum housing