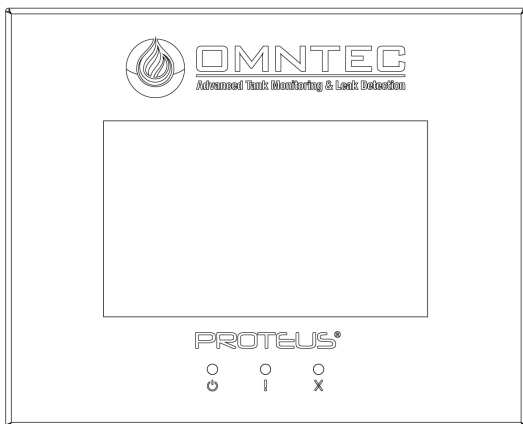




1. Open the camera app
2. Focus the camera on the QR code by gently tapping the code
3. Follow the instructions on the screen to view PDF file

# M<sup>PROTEUS</sup><sup>®</sup> Mini-ME<sup>™</sup>

## MMRD7 | MMRD7-SS Series SYSTEM PROGRAMMING MANUAL



## PROTEUS<sup>®</sup> Series UNIVERSAL REMOTE DISPLAY

Revision 1.1

Document No. DOC00011

OMNTEC Mfg., Inc. has been certified  
by DQS Inc. to ISO 9001:2015

## 1. POWERING ON

For installation instructions, refer to document **DI00008** (Mini-Me™ Installation Manual).

An appropriate communications connection is required to connect an MMRD7 (Mini-Me) to a PROTEUS® controller, or any other industry-standard ATG. PROTEUS communications can be either RS-232, RS-485, or Ethernet connections.



Figure 1.0

It is necessary to check the communications settings (e.g.: baud rate) of both devices to establish proper communications. The MMRD7 communication mode must be set to either **TRANSMITTER** or **RECEIVER** mode based on the function of the controller. When the MMRD7 is powered on and **not** connected to an ATG, the display will show incorrect time and date, a **\*\*NO RESPONSE\*\*** status, and disabled tanks. (See Figure 1.0)

After connecting and establishing communication to an ATG, the MMRD7 will update its information and mirror the ATG. (See Figure 2.0)

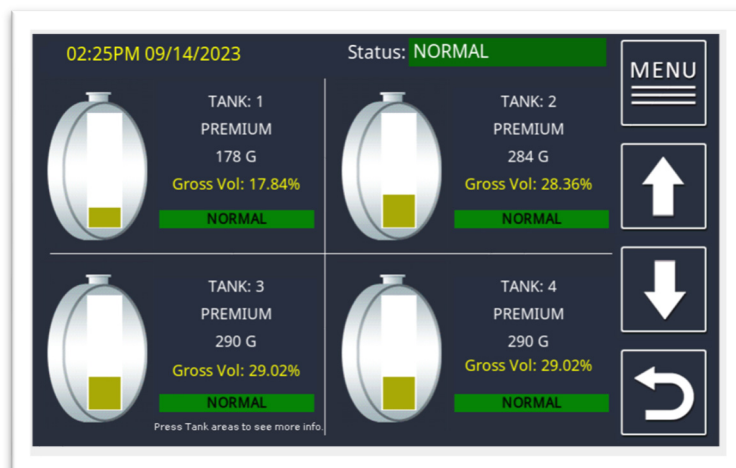


Figure 2.0

## 2. NAVIGATING TO SETUP

From the System Status Menu, press the **HELP MENU** icon.  
(See Figure 3.0)

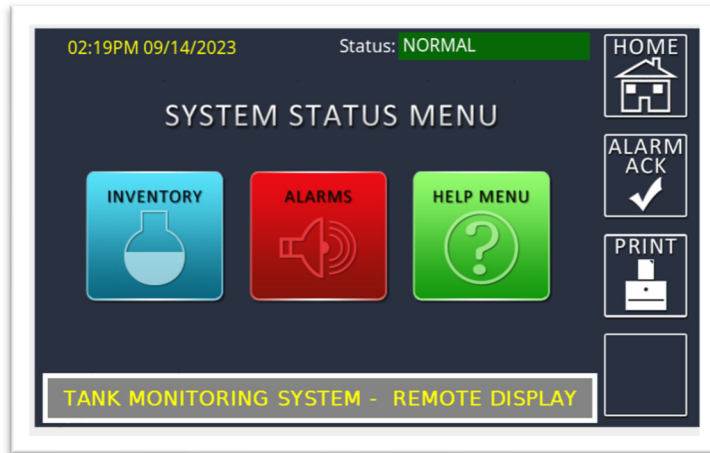


Figure 3.0

In **HELP MENU**, press **SETUP**.  
The default password is **000000**  
(six zeros).  
(See Figure 4.0)

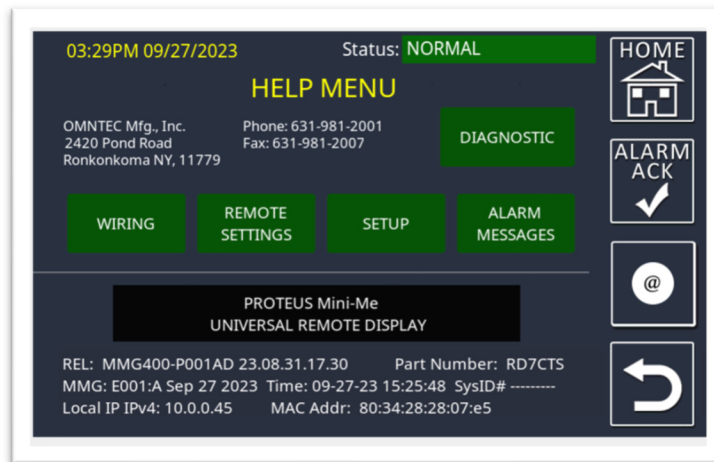



Figure 4.0

The **SYSTEM SETUP** menu and its different settings and functionality buttons will display.  
(See Figure 5.0)

 Please note the **INFORMATION** icon button (“i” in a circle) in the upper right for **SYSTEM SETUP** descriptions.

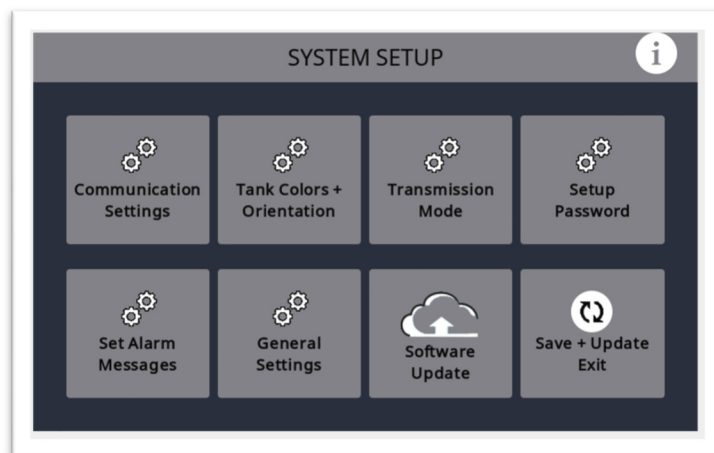


Figure 5.0

### 3. CHANGING PARAMETERS



Pressing the **INFORMATION** icon

button, (“i” in a circle) in the upper right of the **SYSTEM SETUP** page, will display and detail what each parameter will change within the **SYSTEM SETUP**. You can change most parameters to the user’s preference. Use this info page as a guide to program these parameters.

(See Figure 6.0)

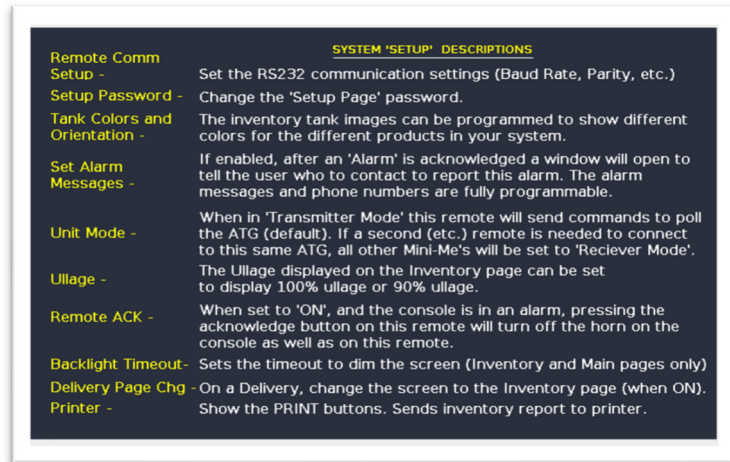


Figure 6.0

### 4. COMMUNICATION SETTINGS

To change the BAUD RATE, select **COMMUNICATION SETTINGS** from the System Setup menu. Use the dropdown arrows (v) to change COMM TYPE, BAUD RATE, PARITY, and other options. Match these to the main ATG. You must press the **SAVE** button to save any changes made.

(See Figure 7.0)

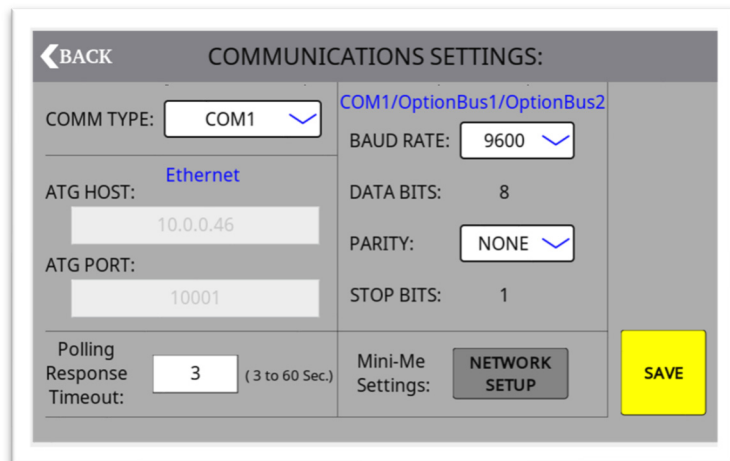


Figure 7.0

## 5. CHANGING TANK COLORS + ORIENTATION

Select **TANK COLORS + ORIENTATION** to choose different colors to display for each tank. The user may also choose to view the tank profile as horizontal or vertical. You must press the **SAVE** button to save any changes made. (See Figure 8.0)

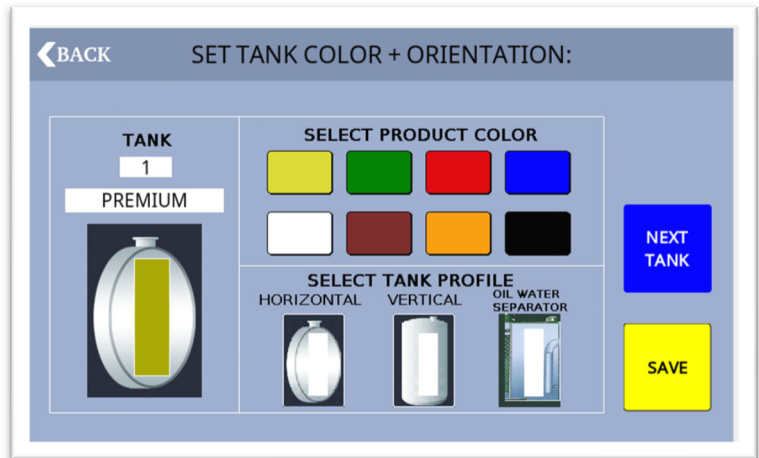


Figure 8.0

## 6. TRANSMISSION MODE (UNIT COMMUNICATIONS MODE)

When a single MMRD7 is connected via RS-232, RS-485, or Ethernet, set the MMRD7 unit mode to **TRANSMITTER** and the ATG to **REMOTE** for that communication type. Transmitter mode allows the MMRD7 to poll; it transmits commands and receives data to and from the ATG. You must press the **SAVE** button to save any changes made.

(See Figure 9.0)

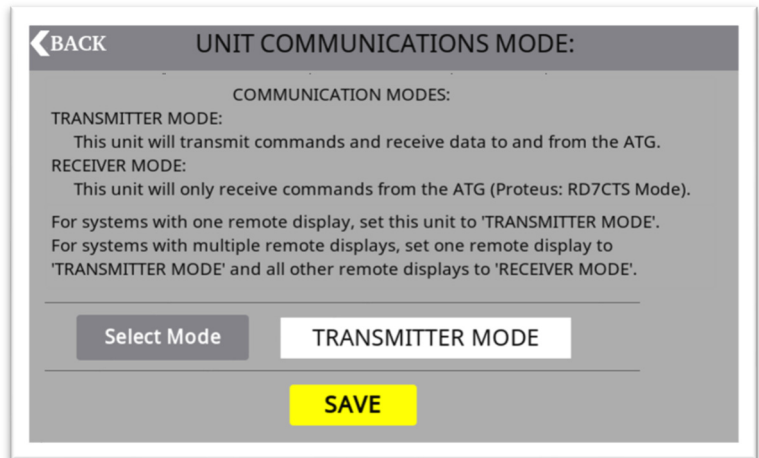


Figure 9.0

When multiple MMRD7 are connected via RS-485 or an RS-232-422 extender, the farthest MMRD7 from the ATG is set for **TRANSMITTER** and each additional MMRD7, in between, is set for **RECEIVER**.

**Important: Always press SAVE when you are finished making changes.**

## 7. SETUP PASSWORD

The **SETUP PASSWORD** button allows you to change the factory-default password of **000000**. Both alpha and numeric characters can be used. (See Figure 10.0)

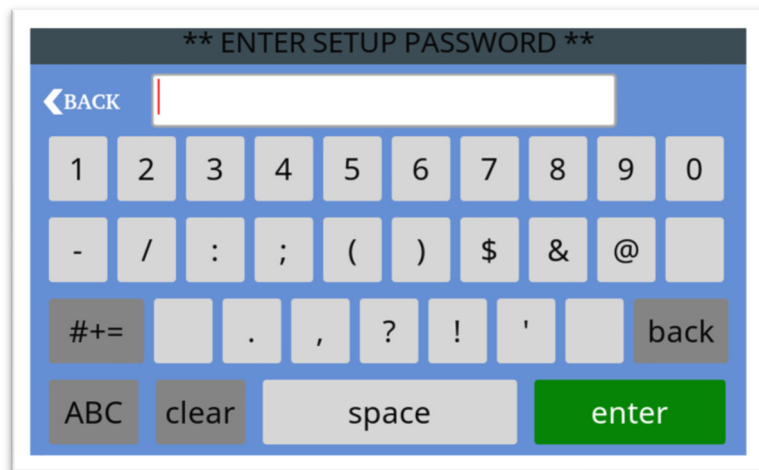


Figure 10.0

## 8. SET ALARM MESSAGES

The **SET ALARM MESSAGES** button allows you to set custom messages for the different alarms that are received. You must press the **SAVE** button to save any changes made. (See Figure 11.0)

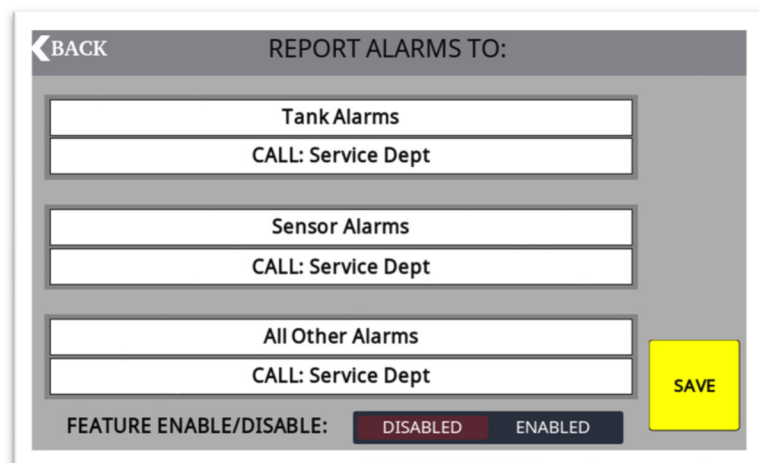


Figure 11.0

Pressing on a specific alarm box will bring up a QWERTY keypad for data entry. (See Figure 11.1)



Figure 11.1

## 9. GENERAL SETTINGS

The **GENERAL SETTINGS** button allows you to set various options on the MMRD7. This includes ULLAGE PERCENT, REMOTE (ACK) ACKNOWLEDGE, DELIVERY PAGE CHANGE, HOME SCREEN (selection display), and HOME SCREEN TANK NUMBER. You can enable a local or network printer (if connected) and set the BACKLIGHT TIMEOUT. (See Figure 12.0)

GENERAL SETTINGS:		Backlight
ULLAGE PERCENT:	90 (80-100)	Backlight
REMOTE ACK:	OFF ON	
DELIVERY PAGE CHANGE:	OFF ON	
HOMESCREEN:	System Status	
HOMESCREEN Tank #:	1	PRINTER ENABLE: <input checked="" type="checkbox"/>
BACKLIGHT TIMEOUT:	0 (1 to 600 Minutes, 0=Off)	BACKLIGHT DIM LEVEL: 1 (1 to 7, 0=Blank)
		SAVE

Figure 12.0

- Ullage Percent:** The percentage used to calculate ullage on ATG printouts. Value should match the ullage percentage on the ATG.
- Remote ACK:** Toggled on, acknowledges the alarm at the ATG via the MMRD7.
- Delivery Page Change:** When set to ON, will automatically wake up the MMRD7 display to show a tank with delivery in progress. OFF will disable this feature.
- Home Screen:** The dropdown (∨) toggles between Home Screen view options.
- Home Screen Tank #:** Choose which tank number information displays on the MMRD7 Home Screen.
- Backlight Timeout:** Sets the minutes of which the MMRD7 backlight times out to dim.
- Printer Enable:** Enables a local or network printer (if connected).
- Backlight Dim Level:**

Pressing the **BACKLIGHT** icon in the upper right of the General Settings page will bring up the **BACKLIGHT ADJUSTMENT** page. This will allow you to set one of seven pre-defined screen brightness settings on the MMRD7.

BACKLIGHT ADJUSTMENT			
100% Screen Brightness	86% Screen(6) Brightness	72% Screen(5) Brightness	57% Screen(4) Brightness
43% Screen(3) Brightness	30% Screen(2) Brightness	15% Screen(1) Brightness	Save Brightness

Figure 12.1

The parenthesized numbers refer to the **BACKLIGHT DIM LEVEL** number you can set on the General Settings page. Additionally, you can save the percentage of the constant screen brightness level on the MMRD7 by pressing one of the seven pre-defined brightness settings and then the **SAVE BRIGHTNESS** button. (See Figure 12.1)

## 10. SOFTWARE UPDATE

The MMRD7 can perform a software update, when required, by pressing the **SOFTWARE UPDATE** button. (See Figure 13.0)

Additional information on performing a software update is available on the OMNTEC website.

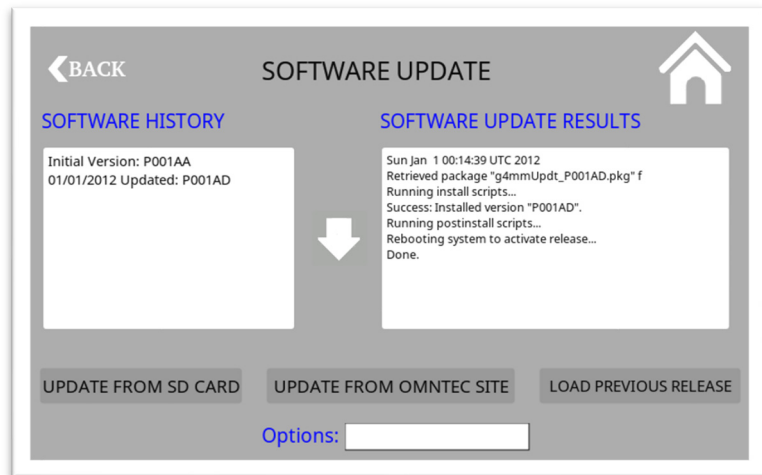


Figure 13.0