



OMNTEC
Advanced Tank Monitoring & Leak Detection

PROTEUS®
Mini-Me™

Universal Remote Display

Part Number: RD7CTS



Description

PROTEUS® Mini-Me™ is a color graphic display providing Automatic Tank Gauge (ATG) users the freedom to gain access to current tank gauging, leak detection and alarm status from ATG consoles.

Automatic Tank Gauges monitor storage vessels for level, temperature, volume and potential leaks. Typically, ATG's are located where audio visual alarms and level information are not conveniently accessible due to installation constraints. These tank gauges are often difficult to use and understand. They are installed in locations that are out of the operator's normal work area therefore rendering potential alarms unnoticed.

PROTEUS® Mini-Me™ allows the user to easily and intuitively gain access to these alarms and level information anywhere throughout a facility. It provides both wired and wireless access to industry standard ATG's providing easily accessible information where required.

Features

- 7 inch color touch screen graphic display
- Ability to view leak sensor alarms and tank inventory remotely
- Audible and visual alarms
- Easy to install
- Easy to use
- Wall mount or flush mount
- Wireless option
- Allows freedom to locate main ATG in a convenient/economical location
- Connects to any industry standard ATG
- Wide viewing angle

PROTEUS[®] Mini-ME[™]

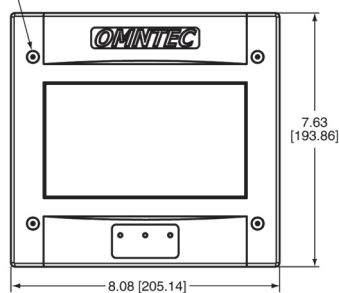
Universal Remote Display

Part No. RD7CTS

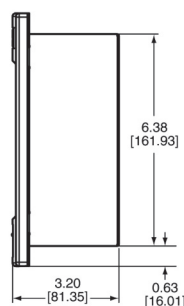
Specifications	
Input Power:	100-240 VAC +/- 10% 50/60 Hz 25 watts (12VDC power available upon request)
Audio Visual Controls	
Display:	Color 7 inch graphic display with touch screen
Audible alarm:	85 dB piezoelectric horn
System status:	3 LED's (OK, Warning, Alarm)
Operating Temperature:	20 to 140 degrees F (-7 to 60 C)
Accessories:	<div> WRS-232 Wireless RS-232 link includes both tank gauge and remote transceivers WRS-232R Wireless RS-232 repeater for extending WRS-232 wireless reach RD-PCK Power cord kit RD-232C-75 75 feet RS232 cable C232-422-RD7CTS RS-232-422 booster kit to increase distance of RS-232 output ENC-4X-RD7 NEMA 4X enclosure HTR-1 Heater for NEMA 4X enclosure TEM-CS Thermostat for NEMA 4X enclosure </div>
Weight:	5 lbs.
Dimensions:	(h) 7.63" (w) 8.08" (d) 3.20"

without notice, verify with manufacturer.

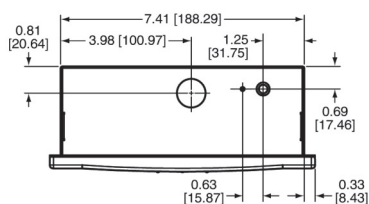
BEZEL
MOUNTING
SCREWS



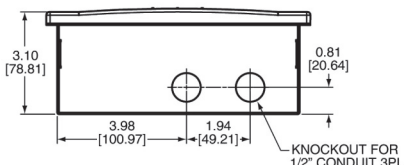
FRONT VIEW



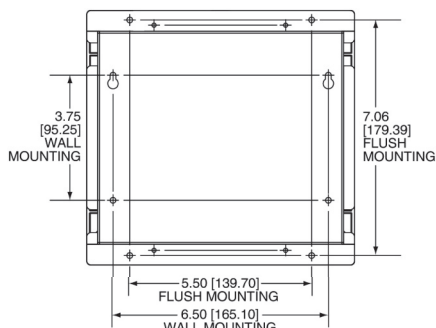
SIDE VIEW



TOP VIEW



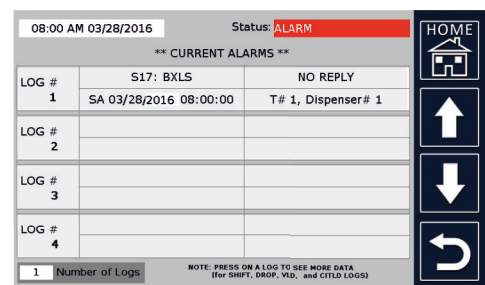
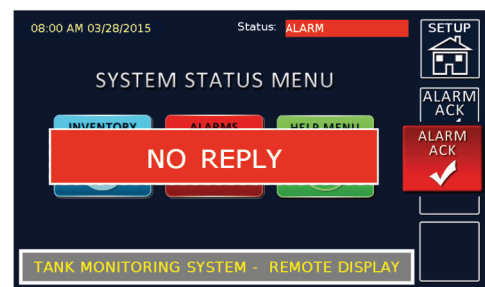
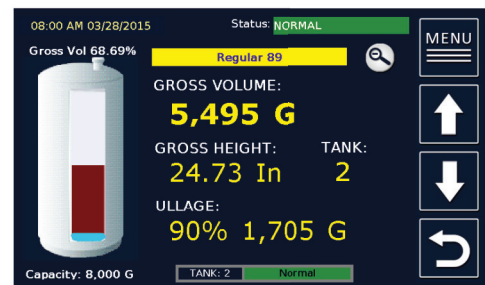
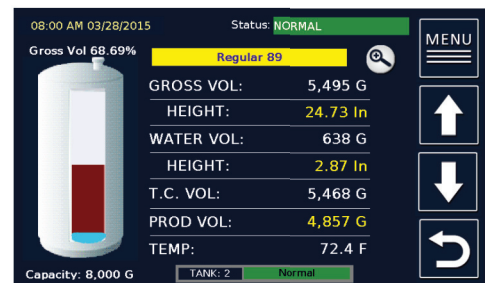
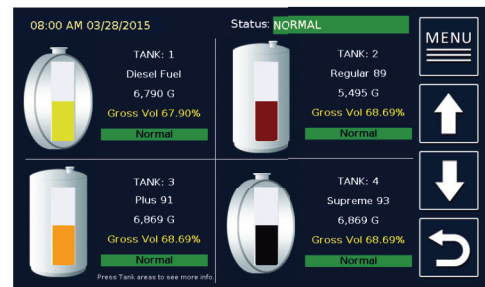
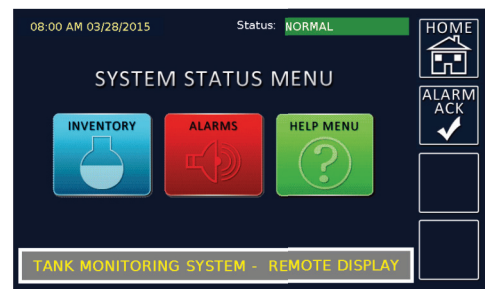
BOTTOM VIEW



MOUNTING DIMENSIONS



OMNTEC Mfg., Inc.
2420 Pond Road
Ronkonkoma, NY 11779
+1.631.981.2001
+1.631.981.2007
omntec@omntec.com
www.omntec.com



Patent Pending