



Frustrated with:

- Remembering to keep daily logs of your tanks?
- Trying to remember alarm and delivery details?



Ever wish you could have a program that:

- Records tank data whenever you want?
- Keeps records of alarms and delivery data?



Well, **OMNTEC PC** has the
answer you've been looking for!

To find out more information and how to
order **OMNTEC PC** call customer service at
(631) 981-2001.



Description

Using a windows type format, the **OMNTEC PC** software package allows for REAL TIME data retrieval and automated polling of all your tank monitoring equipment **24 HOURS A DAY, 7 DAYS A WEEK!**

OMNTEC PC quickly provides you with the pertinent information needed for accurate managerial decision making. Having the data readily available from any and all OEL8000II systems gives you the logistic advantage necessary to quickly retrieve and record daily data.

Features

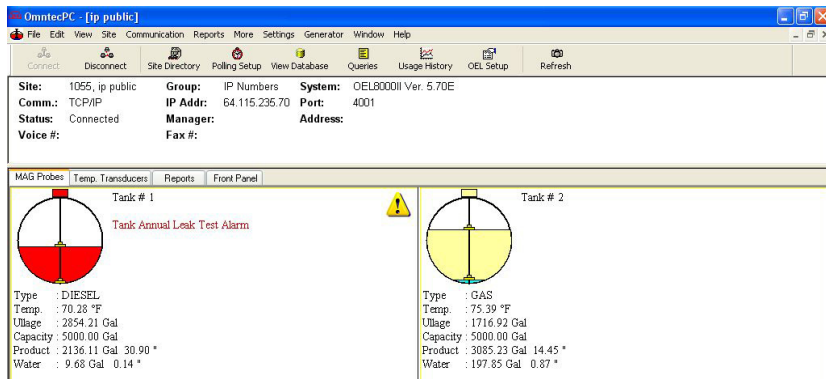
- Programs OEL8000II controller remotely via RS-232, modem, or Ethernet*
- Acts as a central station
 - Receives incoming calls from multiple OEL8000II's*
- Remote communication from anywhere with a phone line or Ethernet and Windows 2000/NT/XP/ME/7/8
- Complete tank inventory and delivery data
- Specific alarm information
- Tracks and logs all your tank information in a database
- Extremely easy to use, one click gets you the information you need
- Automatically saves all polled data
- Windows 2000/NT/XP/ME/7/8 compatible
- Utilizes industry standard communication protocol

**Not available with PROTEUS Series Controllers.*

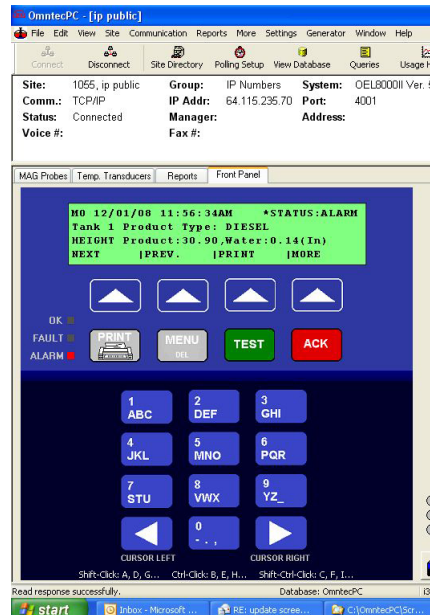
OMNTEC PC Software

Part No. OMN-PC

Tank View



Front Panel View (and system control)*



Database (view polled data)

OmntecPC - [Database View]

File Edit View Site Communication Reports More Settings Generator Window Help

Connect Disconnect Site Directory Polling Setup View Database Queries Usage History OEL Setup Refresh

Select a Site Database: INVENTORY Site: ip public

T	Type	Date/Time	Prod Label	Volume	Height	TC Gross Vol	Usage	Water Vol	Water H	Temperature
1	MAG	12/01/08 11:45	DIESEL	2136.11	30.90	2136.01	2854.21	9.68	0.14	70.22
2	MAG	11/20/08 12:33	DIESEL	2136.11	30.90	2136.04	2854.24	9.65	0.14	70.26
3	MAG	11/19/08 01:00	GAS	2048.82	30.88	2054.44	2031.88	20.30	0.21	67.15
4	MAG	11/19/08 00:30	GAS	2048.82	30.88	2054.09	2031.62	20.35	0.21	67.35
5	MAG	11/19/08 00:00	GAS	2048.77	30.89	2053.67	2031.62	20.41	0.21	67.55
6	MAG	11/18/08 23:30	GAS	2048.93	30.88	2053.31	2031.77	20.30	0.21	67.75
7	MAG	11/18/08 23:00	GAS	2048.93	30.88	2052.90	2031.77	20.30	0.21	67.95

OEL8000II Setup (set system parameters)*

OEL Setup

Interface Boards: Modem & Fax Network Comm Ports Tanks Miscellaneous

Site Info: Modem & Fax Network Tanks

Tank Parameters:

Tank #: 1 Tank Tilt: 0 Tank Diameter: 72
Enable/Disable: Enable Product Null: 1.0 Probe Length: 76
Product Type: DIESEL Water Null: 1.57 Tank Capacity: 5000
Thermal Coef: 45 Wire Speed: 9.00 Volume Offset: 0

Tank Volumetric Leak Detection Test (VLD):

Enable/Disable: Enable If Monthly: 15 Set Test Time: 22:00
Set Interval: Daily If Weekly: 1 Ex. Desire 10:30 PM
Enter in 22:30

Tank Alarms and Set Points:

High High Level: 84 % High Product: 42 % Low Low Level: 10 %
High Warning: 68 % Low Product: 25 % High Water Level: 1
Overflow Alarm: 93 % Delivery Needed: 28 % Sudden Drop: 25

Copy From: 2 Tank Volume Table

Update & Exit Close Update Help

Configuration Report (view all system parameters)

OEL Configuration Report
Generated 12/01/08 12:10:38 OmntecPC Version 4.50.2012.1

Site: Steve's Unit Site ID: 01234567 Manager:
Address: 1993 Pond Rd Addr2 Ronkonkoma NY 11779
Phone:
OEL Version: 5.70E

Shifts

Status: Disabled Number of shifts: 4 Open time: 00:00
Shift 1 End: 06:00 Shift 2 End: 12:00 Shift 3 End: 18:00 Shift 4 End: 00:00

Comm Ports

COM 1 Device: RS200 DATA; Baud rate: 2400
COM 2 Device: Modbus RTU; Baud rate: 9600; Parity: NO PARITY; Data Bit: 8 Bits
COM 3 Baud rate: 57600; Parity: NO PARITY; Data Bit: 8 Bits
COM 5 Device: Modbus RTU, Disabled; Baud rate: 9600; Parity: NO PARITY; Data Bit: 8 Bits
Security Code Disabled

MAG Probes

Tank	Status	1	2	3	4	5	6	7
Product Type	Enabled	DIESEL	Enabled	GAS	NO. 2 FUE	REGULAR		
Thermal Coefficient		45	70.00		45.00	70.00		
Tank Tilt		0	0		0	0		
Product Null		1.0	1.0		1.0	1.0		
Water Null		1.57	14.5717		11.4698	14.7220		
Wire Speed		9.00	9.00		9.00	9.00		
Tank Diameter		72	22		72	22		

System requirements:

- Operating system: Windows 2000/NT/XP/ME/7/8
- Processor: 133 MHz or higher Pentium compatible CPU
- Memory: 64MB of RAM minimum
- CD: CD-ROM for installation of software
- Hard drive space: 5MB minimum
- Note: If you are collecting data for multiple sites we recommend at least 50MB
- Modem: 56K Internal modem (for connections through the OEL8000II modem)
- Serial port: Internal serial RS232 port (for connections through the OEL8000II RS232 port)
- Ethernet: 10/100 mbps
- External software: for OMNTEC PC Database manipulation we recommend Microsoft Access

Specifications subject to change without notice, verify with manufacturer.

*Not available with PROTEUS Series Controllers.

OMNTEC
2420 Pond Road
Ronkonkoma, NY 11779
+1.631.981.2001
+1.631.981.2007
omntec@omntec.com
www.omntec.com