



OMNTEC
Advanced Tank Monitoring & Leak Detection

M PROTEUS®
Mini-ME™

Universal Remote Display and Print Station

Part Number: RD7CTS-P



Description

PROTEUS® Mini-Me™ is a color graphic display providing Automatic Tank Gauge (ATG) users the freedom to gain access to current tank gauging, leak detection and alarm status from ATG consoles.

Automatic Tank Gauges monitor storage vessels for level, temperature, volume and potential leaks. Typically, ATG's are located where audio visual alarms and level information are not conveniently accessible due to installation constraints. These tank gauges are often difficult to use and understand. They are installed in locations that are out of the operator's normal work area therefore rendering potential alarms unnoticed.

PROTEUS® Mini-Me™ allows the user to easily and intuitively gain access to these alarms and level information anywhere throughout a facility. It provides both wired and wireless access to industry standard ATG's providing easily accessible information where required.

Features

- 7-inch color touch screen graphic display
- Ability to view leak sensor alarms and tank inventory remotely
- Audible and visual alarms
- Easy to install
- Easy to use
- Wall mount
- Wireless option
- Allows freedom to locate main ATG in a convenient/economical location
- Connects to any industry standard ATG
- Wide viewing angle
- Thermal printer

Printable Reports:

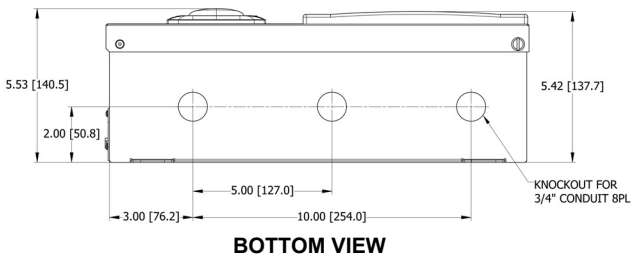
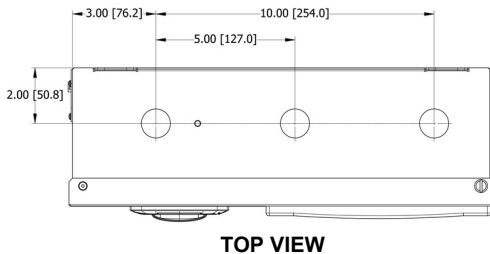
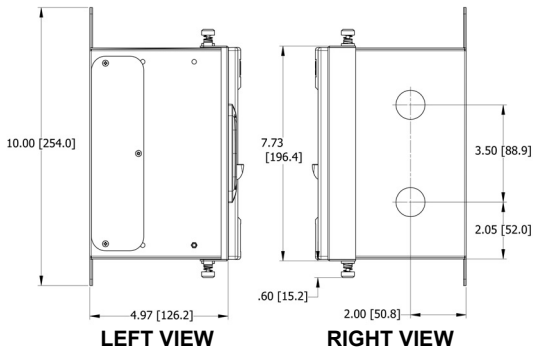
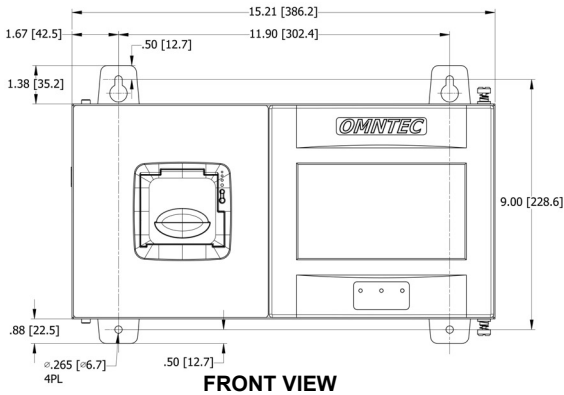
- Current Inventory
- Current Alarms
- Leak Sensor Status
- Leak Detection Results (VLD)

Patent Pending

M^{PROTEUS} Mini-METM

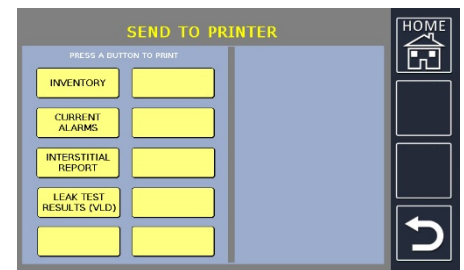
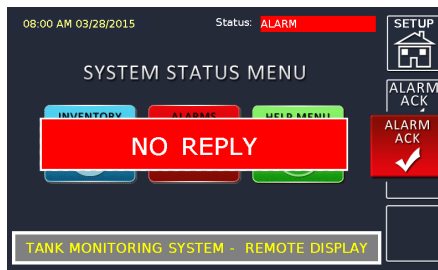
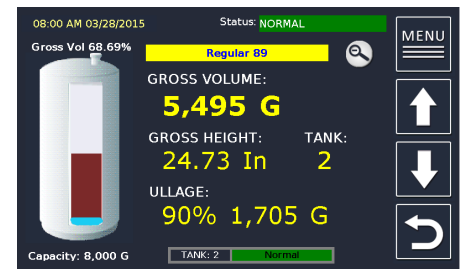
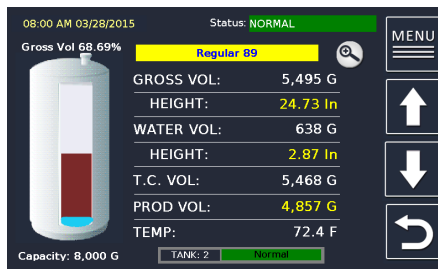
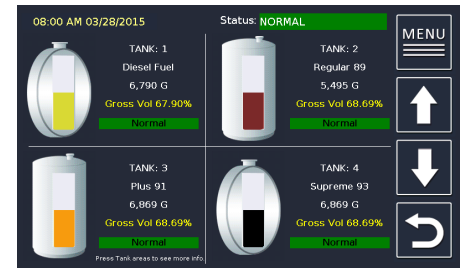
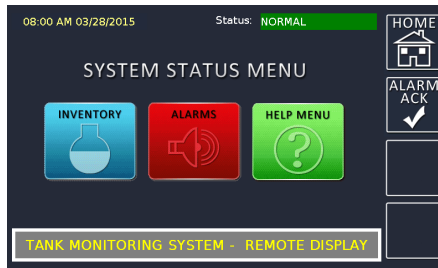
Universal Remote Display

Part No. RD7CTS-P



Specifications	
Input Power:	100-240 VAC +/- 10% 50/60 Hz 25 watts (12VDC power available upon request)
Audio Visual Controls Display: Audible alarm: System status:	Color 7-inch graphic display with touch screen 85 dB piezoelectric horn 3 LED's (OK, Warning, Alarm)
Operating Temperature:	20 to 140 degrees F (-7 to 60 C)
Accessories:	WRS-232 Wireless RS-232 link includes both tank gauge and remote transceivers WRS-232R Wireless RS-232 repeater for extending WRS-232 wireless reach RD-PCK Power cord kit RD-232C-75 75 feet RS232 cable C232-422-RD7CTS RS-232-422 booster kit to increase distance of RS-232 output ENC-4X-RD7 NEMA 4X enclosure HTR-1 Heater for NEMA 4X enclosure TEM-CS Thermostat for NEMA 4X enclosure
Printer:	36-character thermal printer
Weight:	20 lb. (9kg)
Dimensions:	(h) 7.73" (w) 15.21" (d) 5.53"

Specifications subject to change without notice, verify with manufacturer.



1993 Pond Road
 Ronkonkoma, NY 11779
 Phone: (631) 981-2001
 Fax: (631) 981-2007
 E-mail: omntec@omntec.com
 Website: www.omntec.com
 Document No. DS00079 rev1945.docx
 Rev Date: 11-5-2019