

Stand out from the standard.

Vesta LNT Series

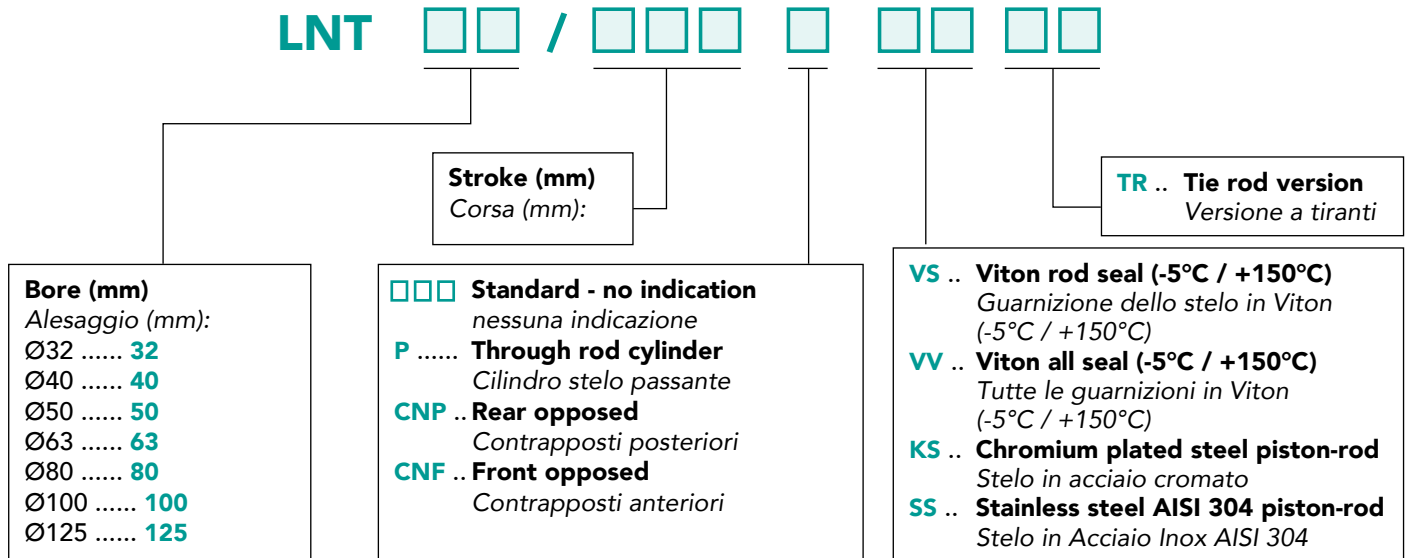
ISO 15552 PNEUMATIC MAGNETIC CUSHIONED CYLINDERS
CILINDRI PNEUMATICI ISO 15552 MAGNETICI E AMMORTIZZATI

Polyurethane lip-seals (FKM available)
Guarnizioni a labbro in poliuretano (disp. Viton)

Lighter tube and self-tapping screws for kits assembly
Tubo leggero e viti auto-formanti per assemblaggio kit

Stainless steel lapped piston rod
Stelo in acciaio inox lappato/rullato



ENCODING / CODIFICA

DESCRIPTION / DESCRIZIONE

The new **Vesta LNT Series** pneumatic cylinders, compliant with ISO 15552, have been developed to guarantee high performance with a lower weight. The choice of materials and the innovative production processes have allowed Vesta to launch a cylinder featured by high strength and reliability for ever increasing competitiveness.

I nuovi cilindri pneumatici Vesta Serie LNT, conformi alla normativa ISO 15552, sono stati sviluppati per garantire elevate prestazioni con un peso più contenuto. La scelta dei materiali e gli innovativi metodi produttivi hanno permesso a Vesta di realizzare un cilindro caratterizzato da un'elevata robustezza e affidabilità per una competitività sempre maggiore.

TECHNICAL FEATURES / CARATTERISTICHE TECNICHE

Heads / Testate	Die-cast aluminium alloy / Pressofuse in lega di alluminio
Piston rod / Stelo	Rolled burnished stainless steel AISI 420 A / Acciaio inox AISI 420 A rullato
Barrel / Camicia	Anodized profile aluminium tube / Tubo profilato ed anodizzato in alluminio
Seals / Guarnizioni	Polyurethane / Poliuretano
Cushioning / Ammortizzatori	Pneumatic adjusting cushions / Pneumatici progressivi regolabili
Buffers / Smorzatori d'urto	Mechanical / Meccanici
Environment temperature range / Temperatura ambiente	-10 °C ÷ +80 °C
Temperature range of medium / Temperatura fluido	0 °C ÷ +40 °C
Lubrication / Lubrificazione	Not required / Non necessaria
Medium / Fluido	Filtered air / Aria filtrata
Max operating pressure / Pressione massima d'esercizio	10 bar

..... - SG SEALS KIT / KIT GUARNIZIONI DI RICAMBIO

Seals kit code / Codice del kit =

Cylinder code + Bore + Versions + **- SG** (The kit includes all seals)

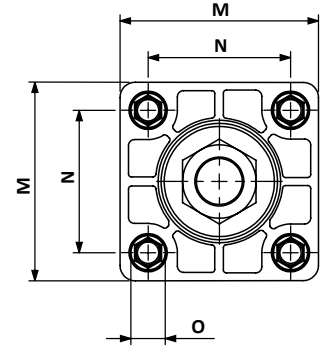
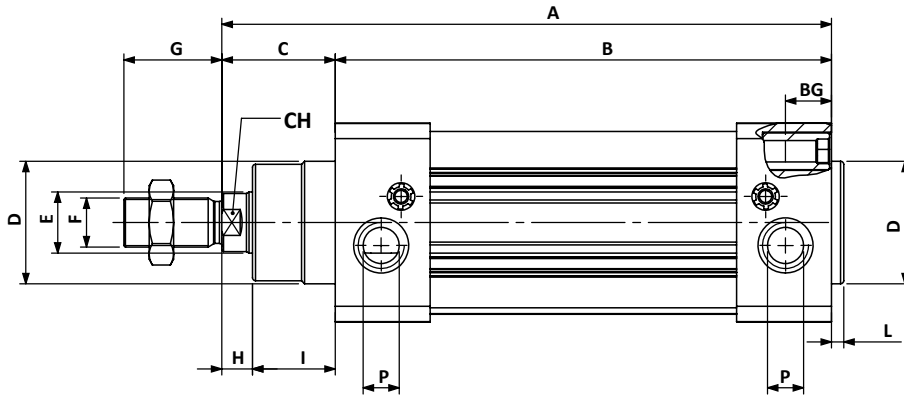
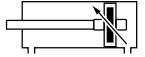
Codice del kit = Codice del cilindro + Alesaggio + Versioni + **- SG** (Il kit comprende tutte le guarnizioni necessarie)

Example / Esempio: **LNT 63 P VS - SG**

STANDARD CYLINDER / CILINDRO STANDARD

LNT .. /...

* = Stroke / Corsa

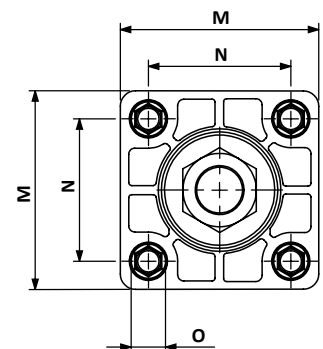
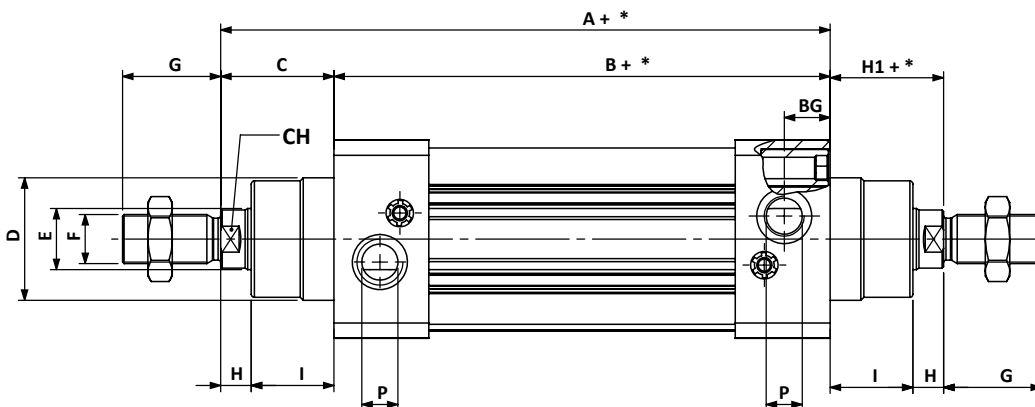


Bore Alesaggio	A	B	C	ØD	ØE	F	G	H	I	L	M	N	ØO	ØP	BG	CH	Code Codice
32	120	94	26	30	12	M10x1,25	20	7	19	3	47	32,5	M6	G1/8	16	10	LNT 32/...
40	135	105	30	35	16	M12x1,25	24	9	21	3	53	38	M6	G1/4	16	13	LNT 40/...
50	143	106	37	40	20	M16x1,5	32	10	27	3,5	65	46,5	M8	G1/4	16	17	LNT 50/...
63	158	121	37	45	20	M16x1,5	32	10	27	4	75	56,5	M8	G3/8	16	17	LNT 63/...
80	174	128	46	45	25	M20x1,5	40	13	33	4	95	72	M10	G3/8	18	21	LNT 80/...
100	189	138	51	55	25	M20x1,5	40	15	36	4	115	89	M10	G1/2	18	21	LNT 100/...
125	225	160	65	60	32	M27x2	54	25	40	6	140	110	M12	G1/2	22	27	LNT 125/...

THROUGH ROD / STELO PASSANTE

LNT .. /... P

* = Stroke / Corsa



Bore Alesaggio	A	B	C	ØD	ØE	F	G	H	H1	I	M	N	ØO	ØP	BG	CH	Code Codice
32	120	94	26	30	12	M10x1,25	20	7	26	19	47	32,5	M6	G1/8	16	10	LNT 32/... P
40	135	105	30	35	16	M12x1,25	24	9	30	21	53	38	M6	G1/4	16	13	LNT 40/... P
50	143	106	37	40	20	M16x1,5	32	10	37	27	65	46,5	M8	G1/4	16	17	LNT 50/... P
63	158	121	37	45	20	M16x1,5	32	10	37	27	75	56,5	M8	G3/8	16	17	LNT 63/... P
80	174	128	46	45	25	M20x1,5	40	13	46	33	95	72	M10	G3/8	18	21	LNT 80/... P
100	189	138	51	55	25	M20x1,5	40	15	51	36	115	89	M10	G1/2	18	21	LNT 100/... P
125	225	160	65	60	32	M27x2	54	25	65	40	140	110	M12	G1/2	22	27	LNT 125/... P

Ø	FOOT PIEDINO	FLANGE FLANGIA	FEMALE REAR CLEVIS CERNIERA FEMMINA POSTERIORE	FEMALE FRONT CLEVIS CERNIERA FEMMINA ANTERIORE	NARROW FEMALE REAR HINGE CONTRO- CERNIERA FEMMINA STRETTA	MALE CLEVIS CONTRO- CERNIERA MASCHIO	ADJUSTABLE TIE ROD TRUNNION CERNIERA INTERMEDIA REGISTRABILE PER TIRANTI	TRUNNION BEARING SUPPORTI PER CERNIERA INTERMEDIA	FLOATING FRONT HINGE CERNIERA OSCILLANTE ANTERIORE	REAR HINGE Ref. CETOP RP107P CONTRO- CERNIERA ORIZZONTALE	REAR HINGE CONTRO- CERNIERA ORIZZONTALE	REAR HINGE "L" SERIES CONTRO- CERNIERA VERTICALE SERIE "L"
32	XP/32	XFL/32	XCF/32	XCFA/32	XCFS/32	XCM/32	XCIR/32*	SU-CI/32	XCBF/32	XAS/32	XASV/32	XANL/32
40	XP/40	XFL/40	XCF/40	XCFA/40	XCFS/40	XCM/40	XCIR/40*	SU-CI/40	XCBF/40	XAS/40	XASV/40	XANL/40
50	XP/50	XFL/50	XCF/50	XCFA/50	XCFS/50	XCM/50	XCIR/50*	SU-CI/50	XCBF/50	XAS/50	XASV/50	XANL/50
63	XP/63	XFL/63	XCF/63	XCFA/63	XCFS/63	XCM/63	XCIR/63*	SU-CI/63	XCBF/63	XAS/63	XASV/63	XANL/63
80	XP/80	XFL/80	XCF/80	XCFA/80	XCFS/80	XCM/80	XCIR/80*	SU-CI/80	XCBF/80	XAS/80	XASV/80	XANL/80
100	XP/100	XFL/100	XCF/100	XCFA/100	XCFS/100	XCM/100	XCIR/100*	SU-CI/100	XCBF/100	XAS/100	XASV/100	XANL/100
125	XP/125	XFL/125	XCF/125	XCFA/125	XCFS/125	XCM/125	XCIR/125*	SU-CI/125	XCBF/125	XAS/125	XASV/125	XANL/125

* Fixing suitable for tie rod version / Accessorio compatibile con versione a tiranti

Ø	REAR HINGE "N" SERIES CONTRO- CERNIERA VERTICALE SERIE "N"	REAR HINGE WITH NARROW ROD EYE CONTRO-CERNI- ERA SNODATA STRETTA	CLEVIS (MALE) WITH ROD EYE CERNIERA MASCHIO CON SNODO	CLEVIS (MALE) WITH ROD EYE CERNIERA MASCHIO CON SNODO	ROD EYE SNODO SFERICO	FLOATING JOINT TYPE "S" SNODO AUTO- ALLINEANTE	CLEVIS ROD FORCELLA STELO	FLOATING JOINT TYPE "F" FLANGIA AUTO- ALLINEANTE	CLEVIS PIN PERNO CERNIERA	NARROW FEMALE REAR HINGE PIN PERNO CONTRO-CERNIERA FEMMINA STRETTA	ROD NUT DADO STELO
32	XANN/32	XAS - SN/32	XCM-SN-AC/32	XCM-SN-AL/32	SNS/10X1,25	SAS/10X1,25	FS/10x1,25	SAF/32	USC/32	USCS/32	DM10x1,25
40	XANN/40	XAS - SN/40	XCM-SN-AC/40	XCM-SN-AL/40	SNS/12X1,25	SAS/12X1,25	FS/12x1,25	SAF/40	USC/40	USCS/40	DM12x1,25
50	XANN/50	XAS - SN/50	XCM-SN-AC/50	XCM-SN-AL/50	SNS/16X1,5	SAS/16X1,5	FS/16x1,5	SAF/50-63	USC/50	USCS/50	DM16x1,5
63	XANN/63	XAS - SN/63	XCM-SN-AC/63	XCM-SN-AL/63	SNS/16X1,5	SAS/16X1,5	FS/16x1,5	SAF/50-63	USC/63	USCS/63	DM16x1,5
80	XANN/80	XAS - SN/80	XCM-SN-AC/80	XCM-SN-AL/80	SNS/20X1,5	SAS/20X1,5	FS/20x1,5	SAF/80-100	USC/80	USCS/80	DM20x1,5
100	XANN/100	XAS - SN/100	XCM-SN-AC/100	XCM-SN-AL/100	SNS/20X1,5	SAS/20X1,5	FS/20x1,5	SAF/80-100	USC/100	USCS/100	DM20x1,5
125	XANN/125	XAS - SN/125	XCM-SN-AC/125	XCM-SN-AL/125	SNS/27X12	—	FS/27x2	SAF/125	USC/125	USCS/125	DM27x2

MAGNETIC SWITCHES / FINECORSA MAGNETICI

Code Codice	Type Tipo	Connection Connessione	Voltage range (V) Tensione max (V)
VNPR2	reed	direct cable / cavo diretto	3-48 AC/DC
VNCR2	reed	connector / connettore	3-48 AC/DC
VNCE3	electronic (PNP)	connector 3 poles / connettore 3 poli	6-30 DC
VNPE3	electronic (PNP)	direct cable 3 poles / cavo diretto 3 poli	6-30 DC
VNPR2HT	reed (temp. -20° +120°C)	direct cable / cavo diretto	3 -130 AC/DC

Fixing for tie rods mounting / Supporto per montaggio su tiranti = FJS

