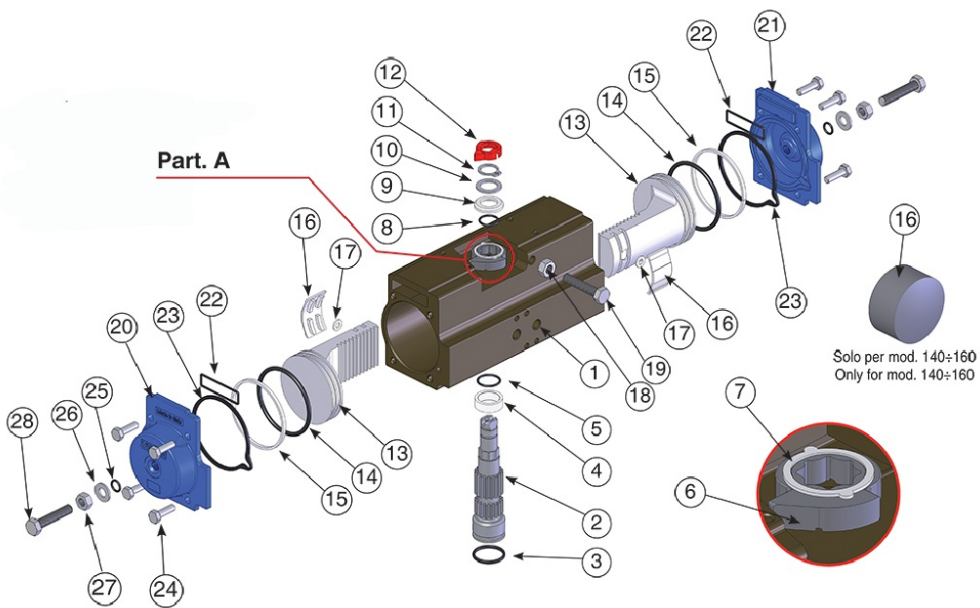




## MOD. 125

### Technical specifications

#### Drawing





## Materials

POSITION	PART NAME	MATERIAL	N.° PIECES
1	Body	Extruded aluminium	1
2	Anti-blowout pinion	Steel	1
3	O-ring	NBR	1
4	Spacer ring	POM	1
5	O-ring	NBR	1
6	Cam	Stainless steel	1
7	Spacer	POM	1
8	O-ring	NBR	1
9	Spacer	POM	1
10	Washer	Stainless steel	1
11	Snap ring	Steel	1
12	Position indicator	Thermoplastic rubber TPE	1
13	Piston	Die cast aluminium	2
14	O-ring	NBR	2
15	Antifriction ring	POM	2
16	Thrust block	POM	2 [4]
17	Washer	Stainless steel	2 [0]
18	Stop bolt retaining nut	Stainless steel	1
19	Stop bolt	Stainless steel	1
20	Left end cap	Die cast aluminium	1
21	Right end cap	Die cast aluminium	1
22	O-ring	NBR	2
23	End cap seats	NBR	2
24	End cap fixing screw	Stainless steel	8
25	O-ring	NBR	2
26	Washer	Stainless steel	2
27	Stop bolt retaining nut	Stainless steel	2
28	Stop bolt	Stainless steel	2

## Table

CODE	FORATURA DRILLING ISO 5211	CH	A	B	C	D	E	F	G	H	ØI	ØK	L	M	N	O	P	Q	R	S	T	U	ØV	Z(MAX)
MOD. 125	F07 - F10	22	537	148	68	80	174,4	30	204,4	22	49	32	80/130	30	24	61	102	70	M8X12	M10X15	1/4"	32	44	750

## Notes

Reinforced series DIN471-UNI7436 Valid for mod.140-160 Parts subject to wear The dimension of the

adjustment screws change according to the angle of rotation needed.

---

## Applications

---



FOOD &  
BEVERAGE



HVAC



PULP & PAPER



PAINTS &  
SOLVENTS



WATER  
TREATMENT



CHEMICAL



OEM



OIL & GAS