

Local health systems and the 2030 targets

The 2030 targets and beyond supporting local health systems dealing
with climate change

Dr Geordan Shannon
University College London
@GeordanShannon

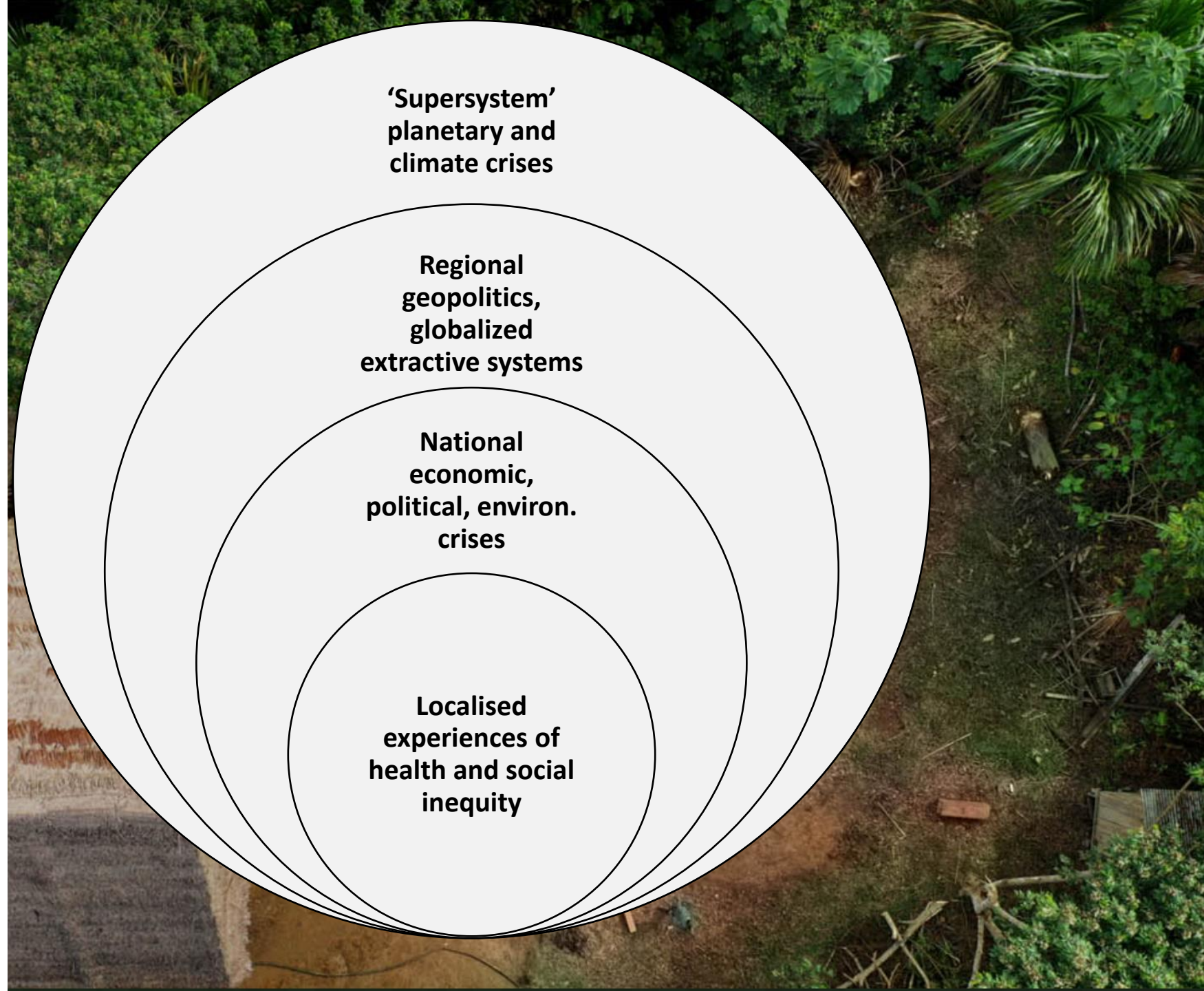
Extreme Environments

Geographic remoteness, high social inequity, and marginalisation from mainstream political decisions

Interlocking challenges across scales

Resourcefulness

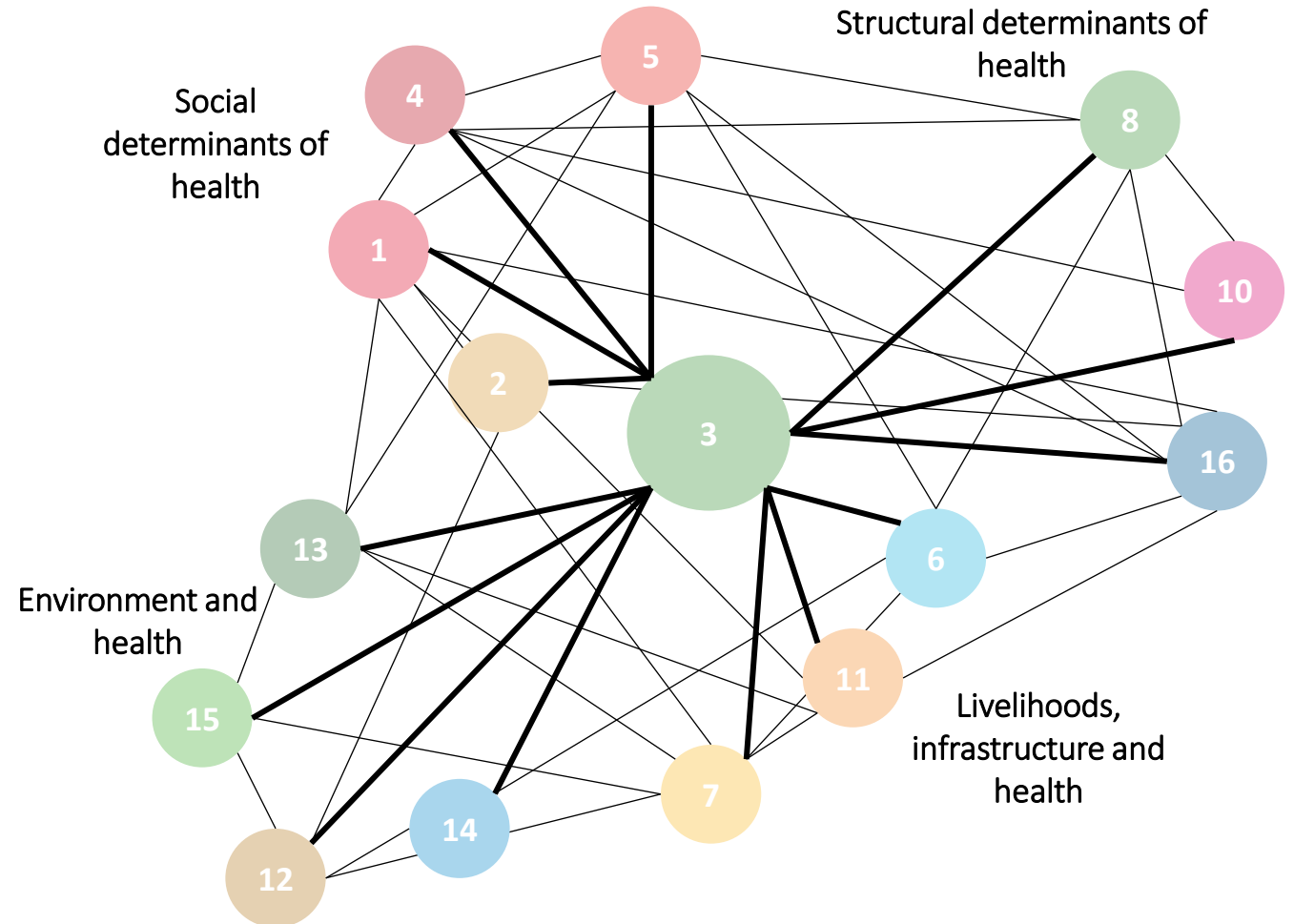
Identification, mobilisation, transformation of local resources for health in response to multi-scalar challenges

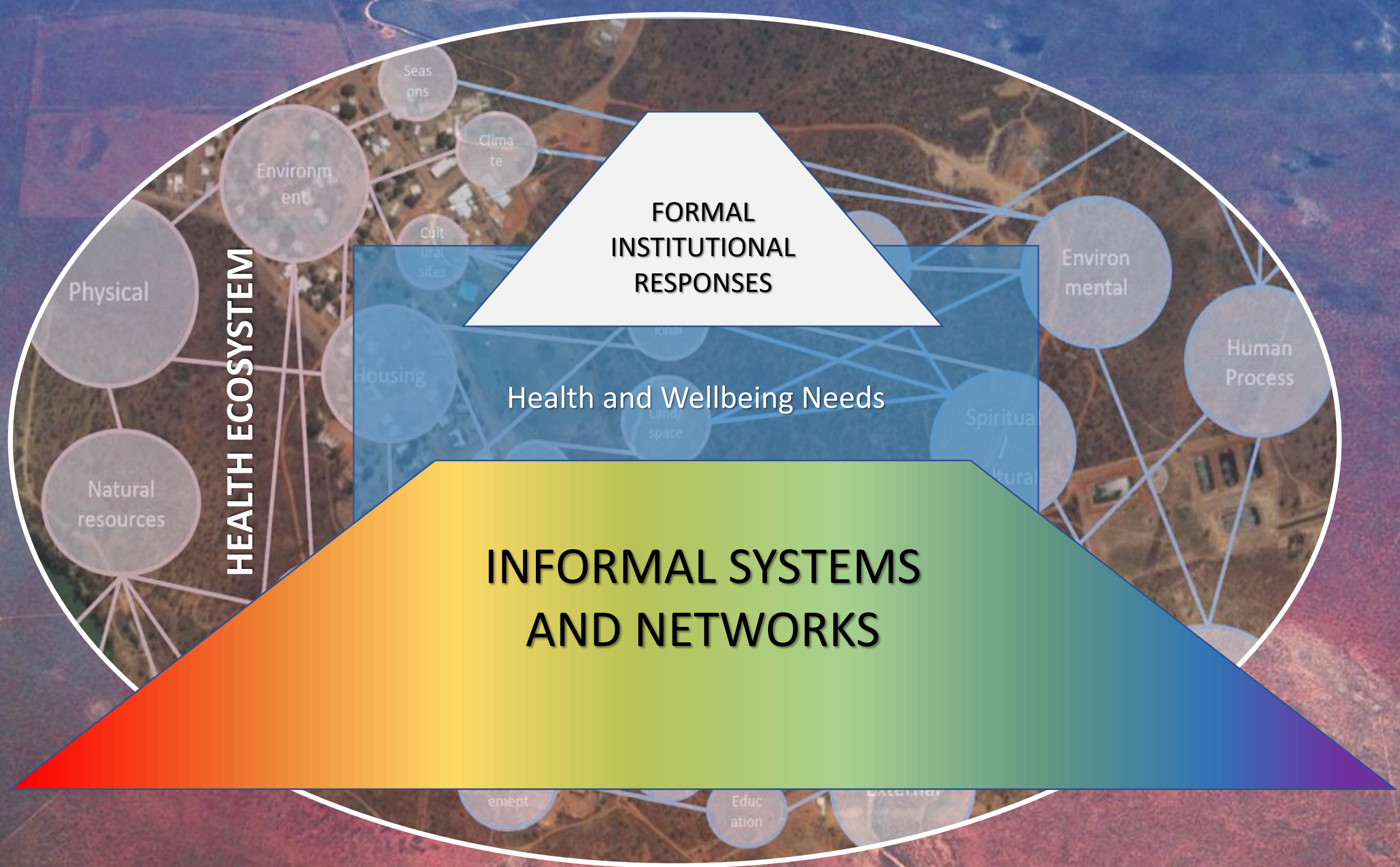




Health and the SDGs

- As an input
- As an output
- As an outcome
- As a process







Community perspectives on the SDGs

- International development often framed in terms of formalised global networks comprising political elites
- These networks have not necessarily protected communities against vulnerability to planetary health crises (pandemic, environment, economy)
- Transformative sustainability initiatives have found that these are often trans-local, i.e. locally rooted but globally connected (Loorbach et al, 2020).

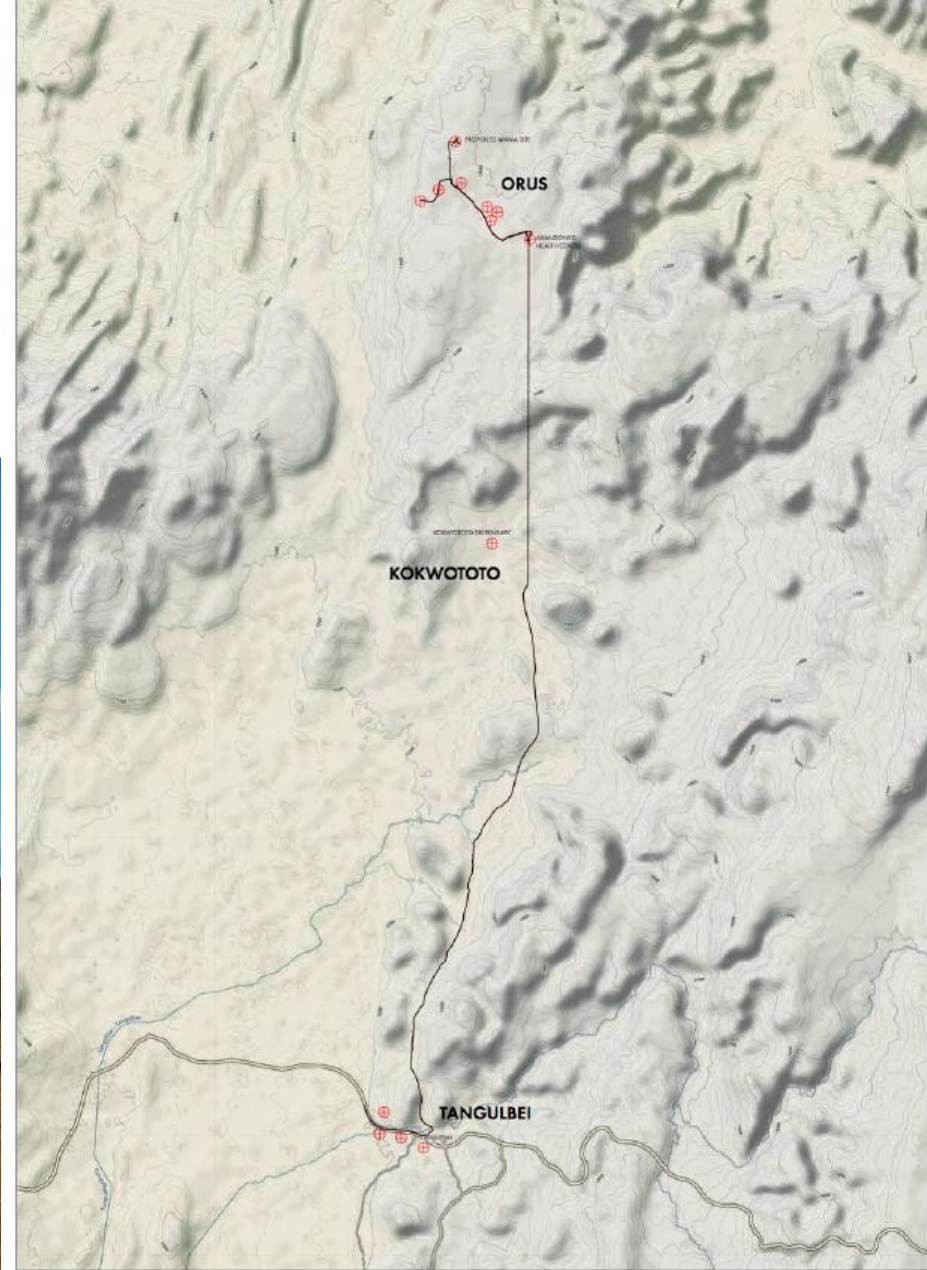
Community perspectives on health, development and the SDGs

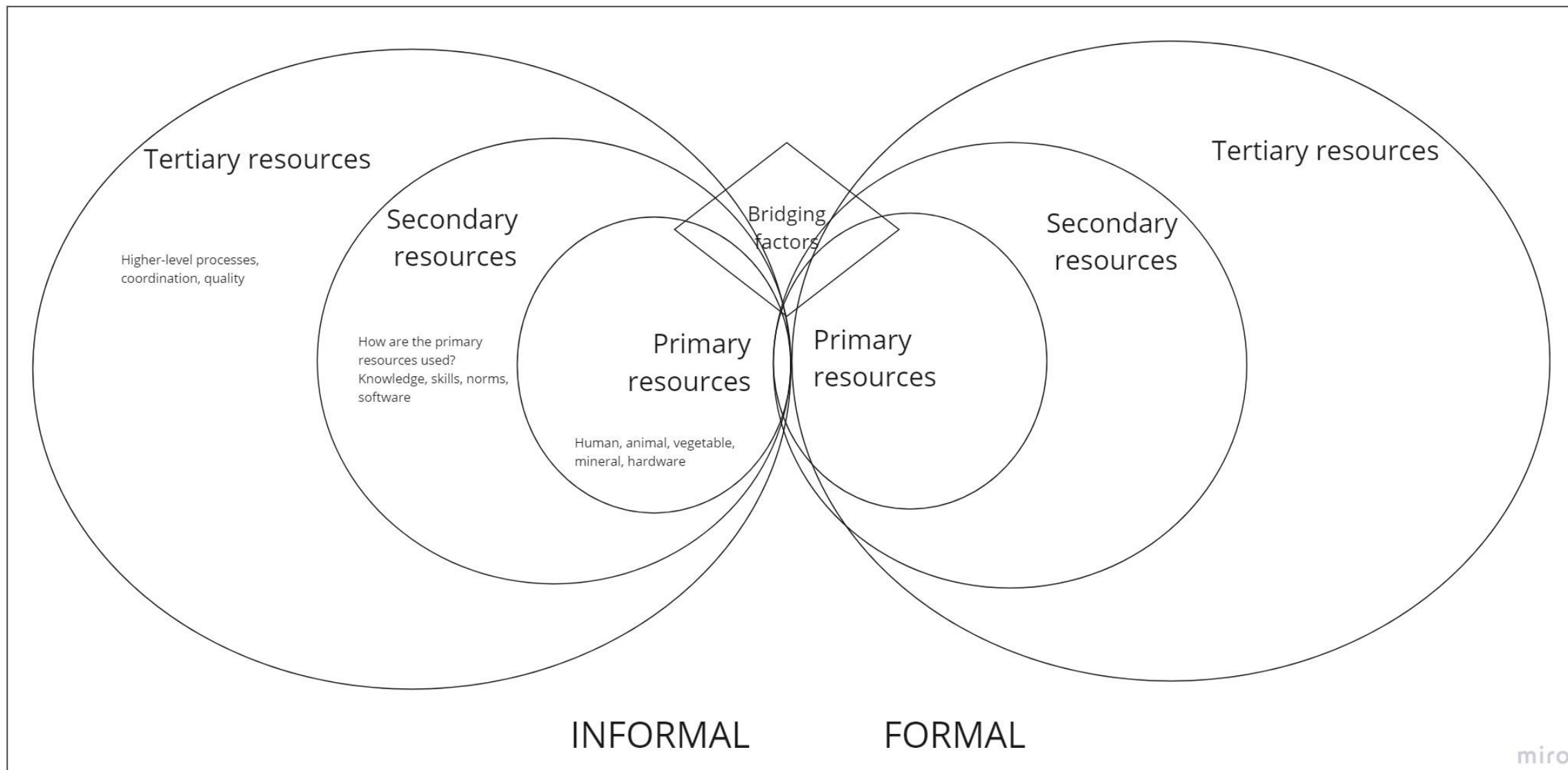
Formal	Informal
Metrics	Meaning
Development	Livelihoods
Health	Wellbeing
Determinants of health	Determination of health
Institutions	Networks of support
Aid	Reciprocity
Deficits	Assets

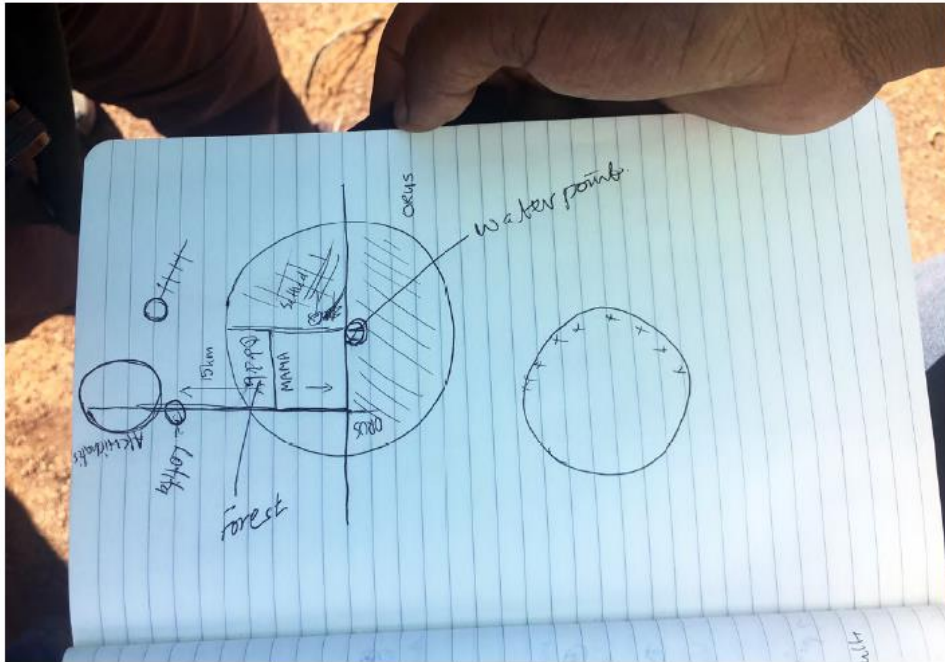
MAMA Kenya



Orus, Tiaty Subcounty







MAMA project
10 May 2019 - ONS Site visit

