

Introduction

Forces and motions are the elements utilized by mechanical equipment to perform work. Unfortunately, these same elements can produce undesirable effects, even in the most carefully designed equipment. The adverse effects of vibration, shock and noise disturbances range from simple annoyances to shortened equipment life through failure of its components. They will affect comfort, safety or performance.

Vibration, shock and noise control components, properly applied, will improve your products. They will operate more smoothly and quietly, and they will be less disturbing to surrounding equipment and personnel, less susceptible to damage and less expensive to make. Bonded rubber mounts provide cost-effective solutions to problems involving vibration, shock and structural noise control.

The theory and concepts for bonded rubber mounts are relatively straightforward. A great many of the applications are uncomplicated, and the nonspecialist can handle them directly. However, some vibration and shock control problems are quite complex, making component selection and design complicated.

These applications require the involvement of specialists in order to arrive at suitable recommendations, and LORD has a technical staff available to assist you. In any event, the information presented in this catalog will prove useful in your independent application solutions, as well as at those times when technical assistance is necessary. Refer to Engineering Guide, Application Selection Guide section.

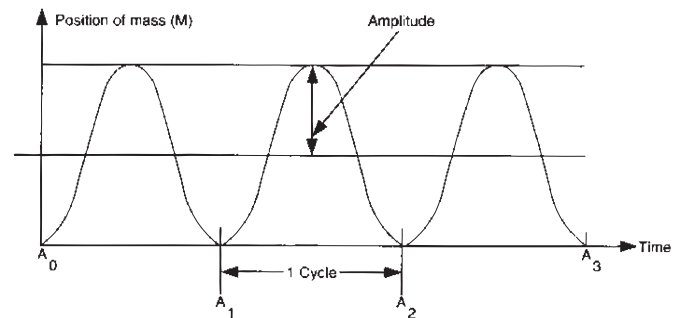
This catalog has been prepared to assist the individual who does not frequently deal with vibration and shock problems and to remind others of the versatility of bonded rubber mounts. It presents the important information needed to select and use bonded rubber mounts: terms and definitions; theory; sample problems; and data on standard mounts.

Terms and Definitions

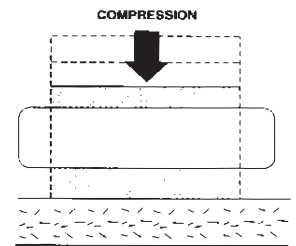
There are a number of terms which should be understood before entering into a discussion of vibration and shock theory. Some of these are quite basic and may be familiar to the users of this catalog. However, a common understanding should exist for maximum effectiveness.

Acceleration – rate of change of velocity with time. Usually along a specified axis, usually expressed in “G” or gravitational units. It may refer to angular motion.

Amplitude – the maximum displacement from its zero value position.



Compression – when specified as a direction for loading – a deformation caused by squeezing the layers of an object in a direction perpendicular to the layers.



Damping (c) – the mechanism in an isolation system which dissipates a significant amount of energy. This mechanism is important in controlling resonance in vibratory systems.

Disturbing Frequency (f_d) – the number of oscillations per unit time of an external force or displacement applied to a vibrating system. f_d = disturbing frequency.

Durometer (hardness) – an arbitrary numerical value, which measures the resistance to the penetration of the durometer meter indenter point; value may be taken immediately or after a very short specified time.

Fragility – is the highest vibration or shock level that can be withstood without equipment failure.

“G” Level – an expression of the vibration shock acceleration level being imposed on a piece of equipment as a dimensionless factor times the acceleration due to gravity.

Isolation – the protection of equipment from vibration and/or shock. The degree (or percentage) of isolation necessary is a function of the fragility of the equipment.

Load Deflection Curve – the measured and recorded displacement of a mounting plotted versus an applied load.

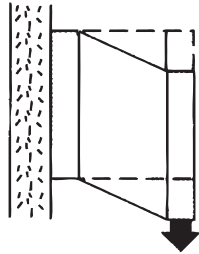
Natural Frequency (f_n) – the number of cycles (expressed as Hertz or cycles per second) at which a structure will oscillate if disturbed by some force and allowed to come to rest without any further outside influence.

Random Vibration – non-sinusoidal vibration characterized by the excitation of a broad band of frequencies at random levels simultaneously.

Resonance – vibratory system is said to be operating at resonance when the frequency of the disturbance (vibration or shock) coincides with the system natural frequency.

Set – is the amount of deformation never recovered after removal of a load. It may be in shear or compression.

Shear – when specified as a direction for loading – a deformation caused by sliding layers of an object past each other in a direction parallel to the layers.



Shock Pulse – a shock pulse is a transmission of kinetic energy to a system, which takes place in a relatively short length of time compared to the natural period of this system. It is followed by a natural decay of the oscillatory motion. Shock pulses are usually displayed as plots of acceleration vs. period of time.

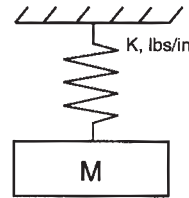
Spring Rate – is the force required to induce a unit deflection of spring. A steel spring has a very linear relationship between force and deflection. Elastomeric springs may or may not be linear depending on the amount of deflection due to the load.

Static Deflection (d_s) – the deflection of the isolator under the static or deadweight load of the mounted equipment.

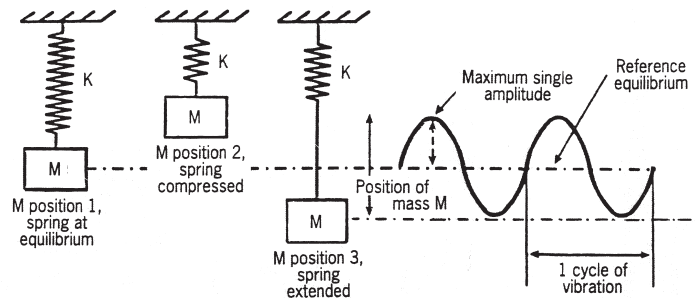
Transmissibility (T) – is a dimensionless unit expressing the ratio of the response vibration output to the input condition. It may be measured as motion, force, velocity or acceleration.

Theory

Vibration is an oscillatory motion. Any body with mass and elasticity can vibrate. The simplest type of vibrating system is called a single-degree-of-freedom spring-mass system. The spring is characterized by its spring rate, K , and a mass, M .



This system is called a single-degree-of-freedom system because motion can occur in only one direction. Spring rate defines the force required to induce a unit deflection of a spring. A steel spring has a linear relationship between force and deflection. Elastomeric springs may or may not be linear depending on the amount and direction of the load. Nonlinearity can be designed into elastomeric springs to achieve certain results. Elastomeric springs also differ from steel springs in that their stiffness is sensitive to the rate or speed of deflection. If a rubber spring is deflected quickly, it appears stiffer than if it is deflected slowly.



When a mass is attached to a spring, the mass moves to its position of equilibrium, position 1. The difference between the spring's undeflected or free length and its position of equilibrium is called the system's static deflection, d_s . If a force is applied to the system, position 2, and then removed, the spring-mass system will vibrate, position 3. When plotted against time, the position of the mass relative to its equilibrium position is a sinusoidal curve. The maximum single amplitude is the deflection of the mass from its equilibrium position to its maximum displacement in one direction. Double amplitude displacement is the total deflection in both directions. The period of vibration is the time it takes for the mass to move from its equilibrium position to its peak in one direction, to its peak in the other and back to its equilibrium position.

If a load is applied to our spring mass system and then released, the mass will vibrate at a constant rate. We call this condition resonance, and the vibration rate is called the natural or resonant frequency. The natural frequency of a system can be considered a function of mass (M) and spring rate (K).

$$\text{Natural frequency } f_n = \frac{1}{2\pi} \sqrt{\frac{K}{M}}$$

Natural frequency is usually measured in hertz. This equation can be written in many forms:

$$f_n = \frac{1}{2\pi} \sqrt{\frac{Kg}{W}} = 3.13 \sqrt{\frac{K}{W}}$$

where K=spring rate, lb/in; W=weight in pounds; M=mass in lb-sec²/in; and g=acceleration of gravity, 386.2 in/sec². From this formula, you can see that an increase in mounting system stiffness or a decrease in weight will increase the natural frequency. A decrease in mounting system stiffness or an increase in weight will decrease the natural frequency.

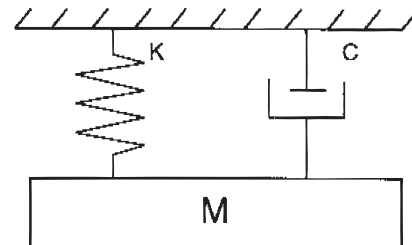
So far we have discussed free vibration, what happens when a force is applied and removed from our spring mass system. When a force is applied to the system as a sinusoidal vibration, the output through the system can be defined in terms of transmissibility. Transmissibility is the ratio of output to input and is dimensionless. Vibration output and input can be measured as motion, force, velocity or acceleration. The transmissibility of a mount is a function of the relationship of the input frequency to the natural frequency and the amount of damping.

$$\text{Transmissibility, } T = \frac{1}{\left(\frac{f_d}{f_n}\right)^2 - 1}$$

for undamped springs when $f_d/f_n \geq \sqrt{2}$ where f_d =input or disturbing frequency and f_n = natural frequency.

In Figure 1, we see transmissibility plotted against the frequency ratio, f_d/f_n . When the disturbing frequency is very low compared to the natural frequency, the transmissibility is close to one, position 1. If the disturbing frequency is close to the natural frequency, the transmissibility is very high. The output is much larger than the input. (See Region of Amplification, position 2.) Position 3 is the crossover point when the f_d/f_n ratio is equal to the $\sqrt{2}$. When the disturbing frequency is high compared to the natural frequency, transmissibility is low. (See Region of Isolation, position 4.) Isolation is the goal of an elastomeric spring. We wish to attenuate a known disturbing frequency. From the desired transmissibility, we can define the required frequency ratio and calculate the system natural frequency. Using the natural frequency calculations, we can calculate the required spring rates for the vibration mounts.

An elastomeric spring has another characteristic that a simple steel spring does not. It has hysteresis damping, C.



When an elastomeric mount is deflected, some energy is converted to heat. Without damping, a spring mass system will continue to oscillate at its resonant frequency for an extended time after the input has stopped. With damping, the oscillations decay more quickly. Damping also has an effect on transmissibility.

Figure 1

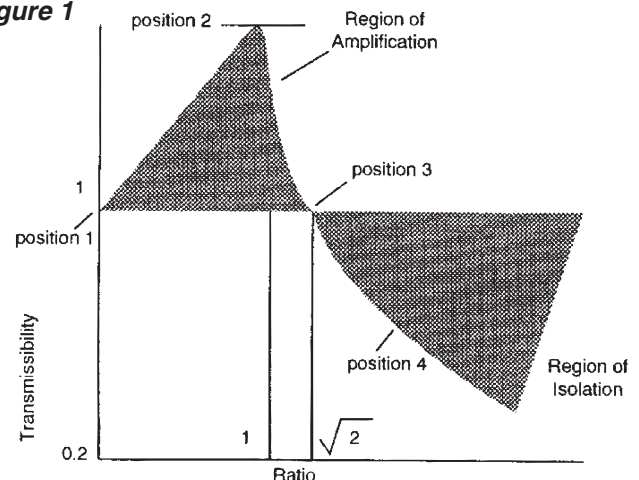
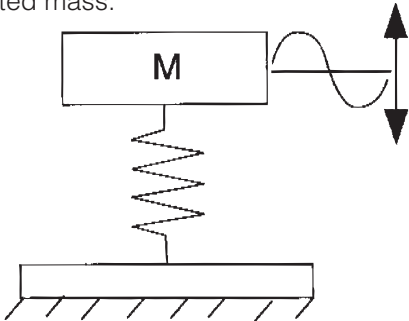


Figure 2 is a plot of transmissibility for two levels of damping, η . As you can see, the greater the amount of damping, the lower the transmissibility at resonance, position 1. Positions 2a and 2b have different transmissibility values for the same frequency ratio when using different values for damping. This illustrates the compromise an engineer must make when choosing the necessary amount of damping in an elastomeric mount. If the disturbing frequencies are known, we would design a lightly damped mounting system with a natural frequency well below the disturbing frequency. The low damping would provide optimum isolation. In cases where the disturbing frequencies are numerous, unknown or impossible to avoid, a highly damped system is preferred. The high damping reduces the peak response that can occur if the same disturbances are near the natural frequency of the mounts. A reduction in isolation efficiency will also occur. Vibration isolation employs resilient mountings and mounting systems to reduce the transmission of vibration from one point to another. All simple or single-degree-of-freedom problems can be classified into two groups:

1. Mass excited system: Protecting the supporting structure from vibratory disturbances originating in the supported mass.



2. Base Excited System: Protecting the supported mass from the vibratory disturbances of the supporting structure.

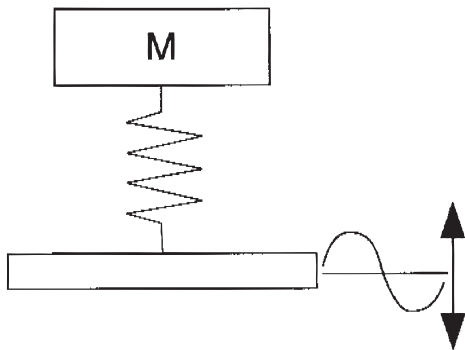
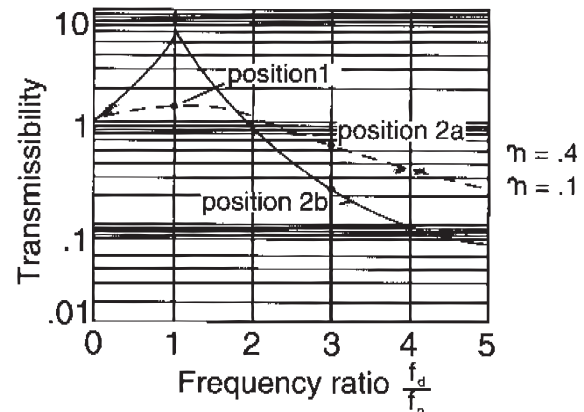


Figure 2



In the first case, mass excited, the mass moves because of the vibrating force. This causes a deflection across the spring which transmits a force to the structure. This force must be reduced. In the second case, base excited, the vibrating or moving structure causes a deflection across the spring which transmits a force to the supported mass. This causes the mass to move. This motion must be reduced.

When do you start thinking about vibration control? The earlier the better. The record proves that the best time to consider the need for vibration control is in the beginning stages of product design.

The reward for this kind of foresight is best performance at the lowest cost. Your best chance of gaining this benefit comes when you call in a specialist as soon as the vibration or shock problem is recognized. Recognizing such a problem is a design responsibility. Vibration analysis is a requisite of equal importance with stress analysis, cost analysis, material selection and reliability assurance. No design is complete without all of these.

These benefits are produced when the mounting system design coincides with product design:

- Accurate analysis of the dynamic environment.
- Precise determination of mounting system requirements.
- Most advantageous system configuration.
- Adequate space for mountings and sway space clearance for the mounted assembly.
- Predictable results through application of proven principles to meet exact requirements.

These are just a few of the reasons for considering vibration control early in design. It is apparent that the designer has everything to gain and nothing to lose by following this practice.

Shock Mechanics

Shock is a common phenomenon with many familiar sources: aircraft landings, impacting of railroad cars, power surges or impacts in marine drive systems, driving over bumps, dropping product containers, explosions, missile launching and staging. Thus, shock protection is a common requirement in good product design. Today's trend to higher speeds, heavier loads, larger power plants and lighter weights accentuate the problem.

Mechanical shock is a nonperiodic disturbance of a mechanical system characterized by suddenness and severity. Such extreme disturbances cause significant forces in the system which may be damaging. A shock input is non-repetitive in nature and of limited time duration. The response it produces normally decays to an arbitrarily small value before the next disturbance.

Shock inputs may be caused by:

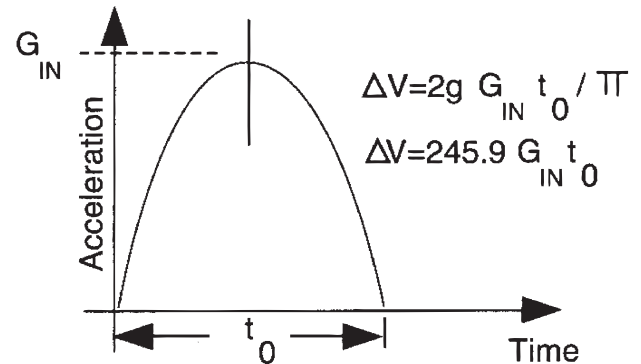
1. A sudden introduction of energy into the system or a change in the level of energy in the system.
2. A force excitation.
3. An abrupt motion, velocity or acceleration change.

Analysis of a shock problem usually starts with an examination of the shock input. Shock inputs are of short duration and non-periodic. Often these short duration transient loads have complex wave shapes. Analysis may be simplified by comparing the actual wave shape to several simple wave shapes for which the response is known. Important features of the shock pulse are: maximum amplitude, time duration and approximate shape. The majority of excitations typically encountered are:

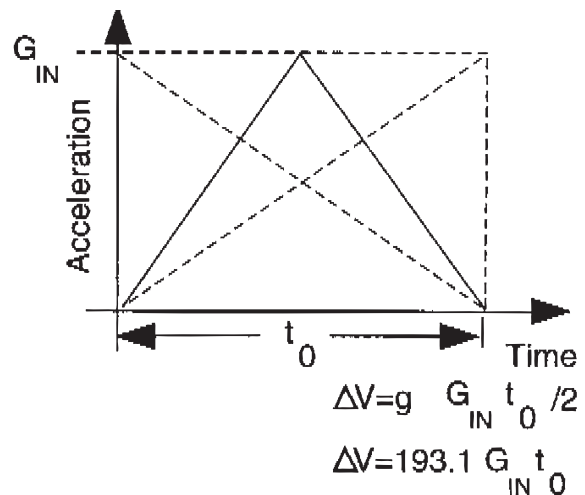
- Half-sine Shock Pulse
- Triangular Shock Pulse
- Drop Shock
- Velocity Shock

Each can be defined as:

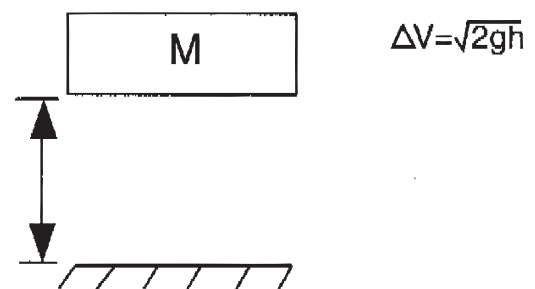
• Half-sine Shock Pulse



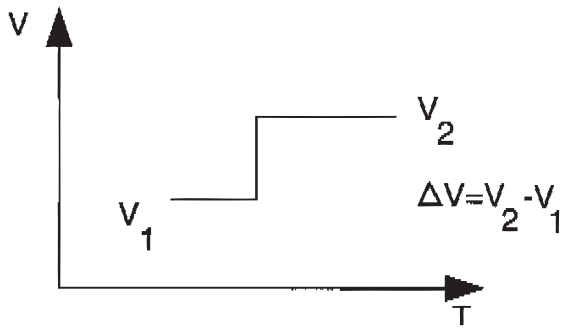
• Triangular Shock Pulse



• Drop Shock



• Velocity Shock

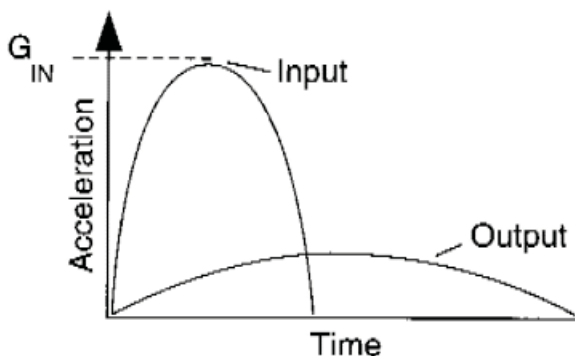


where: ΔV = change in velocity, in/sec
 g = acceleration due to gravity, 386 in/sec²
 G_{in} = shock pulse magnitude, G's
 Π = 3.1416
 t_o = shock pulse duration in seconds
 h = drop height in inches
 V_2 = velocity at point 2
 V_1 = velocity at point 1

Engineers should consider mechanical shock by comparing the fragility level of the most sensitive component to the actual shock acceleration input. Fragility is defined as the highest acceleration level beyond which equipment will fail to operate within specification. The shock mount shall not permit the output acceleration to exceed the fragility level. The G's output can be calculated by:

$$G_{out} = \frac{2\pi f_n \Delta V}{386.2 \text{ in/sec}^2} = \frac{f_n \Delta V}{61.4}$$

In other words, the input acceleration is absorbed by the resilient mount, and the shock energy is released over a broader time base. By dispersing the shock energy over a broader time base, the output accelerations are reduced.

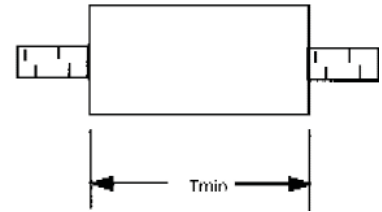


The elastomeric isolator must have the ability to accommodate the higher deflections that are characteristic of mechanical shock. The dynamic deflection, d_d , can be calculated by:

$$d_d = \frac{\Delta V}{2\pi f_n}$$

This dynamic deflection must not exceed the safe limits of the isolator's strain capability. We can use an equation to determine the minimum rubber wall thickness for a shear or sandwich mount:

$$T_{min} = \frac{d_d}{1.5}$$



where T_{min} =

The designer must also accommodate sway space within the product design. If not, even though the shock mount may be very efficient, lack of necessary sway space may cause secondary collisions resulting in the same damaging effect as if no shock attenuation devices were used.

If the concepts outlined above are kept firmly in mind, the designer will be well on his way to the most efficient attenuation of shock in a wide variety of applications.

Elastomers for Vibration Isolation

"Rubber" is a synthetic or natural material whose long-coiled, high molecular weight chains have been cross bridged by certain chemical ingredients to form a network. It is characterized by the ability to accept and recover from extreme deformation of 200% or more. The term "elastomer" includes natural rubber and the many synthetic materials that possess rubber-like properties.

Choice of an elastomer invariably hinges on the balance of properties offered. Some properties are interdependent, and the designer should understand the effect of one upon the other. To gain a desirable characteristic, for example, it may be necessary to accept reduction in some other property. Two or more optimum properties may be obtainable together.

Within the various families of LORD products, a number of elastomers may be selected. Some brief description may help guide in their selection for a particular problem.

Selection and Service Guide for Elastomers

Common or Trade Name	Natural Rubber	Synthetic Natural	Neoprene	Nitrile or Buna N	Silicone
Chemical Type	Natural polyisoprene	Isoprene	Chloroprene	Nitrile butadiene	Polysiloxane
ASTM D1418 Designation	NR	IR	CR	NBR	MQ, PMQ VMQ, PVMQ
ASTM D2000/SAE J200 type, class	AA	AA	BC, BE	BF, BG, BK, CH	FC, FE, GE
PHYSICAL					
¹ Density (gm/cm ³)	0.93	0.93	1.24	1.00	1.1-1.6
Hardness range (Shore A)	30-100	40-80	40-95	20-90	25-80
Permeability to gases	C	C	B	B-A	D
Electrical resistivity	A	A	C	D-C	A
Odor	B-A	B	C-B	B	B
Taste	C-B	C-B	C-B	C-B	B
Nonstaining	A	A	B-A	C-B	A
Bondability	A	A	A	B-A	B-A
MECHANICAL					
² Tensile strength (max psi)	4500	4000	4000	3500	600-1500
³ Abrasion resistance	A	A	B-A	A	C-B
⁴ Flex resistance	A	A	B	B	C-B
⁵ Tear resistance	A	B	B	B	C-B
⁶ Impact resistance	A	A	B	C	D-C
⁷ Deformation capacity	A	A	A	B	A
⁸ Elasticity	A	A	B	B	B-A
⁹ Resilience	A	A	A	B	D-A
¹⁰⁻¹¹ Creep, stress relaxation	A	B	B	B	C-A
THERMAL					
Recommended max temp (°C)	70	70	100	100-125	200-225
¹² Low-temp stiffening	B	B	C	C	A
Heat-aging resistance	B-C	B-C	B-A	B	A
Flame resistance	D	D	B-A	D	A
RESISTANCE TO:					
Weather	C-B	C-B	B	C-B	A
Oxygen	B	B	A	B	A
Ozone	C-D	C-D	B	C-D	A
Radiation	B	B	B	B	C-B
Water	A	A	B	A	A
Steam	B	B	B	C-B	C-B
Alkali dil/conc	A/C-B	C-B/C-B	A/A	B/B	A/A
Acid dil/conc	A/C-B	C-B/C-B	A/A	B/B	B/C
¹³ Oil, gasoline, kerosene	NR	NR	C	A	D-C
Benzene, toluol	NR	NR	D	B	NR
¹³ Animal, vegetable oils	D-B	D-B	B	B	A
Oxygenated solvents	B	B	C	D	B-C
Halogenated solvents	NR	NR	D	C-B	NR
Alcohol	B-A	B	A	C-B	C-B
Synthetic lubes (diester)	NR	NR	D	B-A	NR
Hydraulic fluids					
Silicates	B-A	B-A	B	B	D
Phosphates	D	B	C	D	B

A = Excellent B = Good C = Fair D = Poor NR = Not Recommended

- The higher the density, the more rubber is required to make a given part. For example, compare neoprene and natural rubber. Even at the same price per pound, neoprene would be more expensive to use.
- While tensile strength per se is not necessarily important, retention of strength at elevated temperatures suggests retention of other mechanical properties as well.
- Abrasion-resistance ratings apply to a wide range of temperatures as well as type of abrasion (such as rubbing and impingement).
- A high resistance to crack-growth indicates good general durability – necessary where physical abuse is expected.
- Tear resistance, along with crack-grown resistance, is desirable where physical abuse is expected.
- Rubbers that strain-crystallize at extreme deformations are much more durable in impact than those that do not. Low-temperature flexibility also helps improve impact performance.

- A high deformation capacity usually indicates a high fatigue resistance to flexing.
 - The lower the permanent set, the better the structural integrity and the better the retention of initial dimensions.
 - The higher the resistance, the less the degradative heat buildup in a flexing or dynamic situation.
 - The better the resistance to creep, the longer the life of the part, particularly where clearances are to be maintained.
 - Resistance to stress relaxation is essential in seals and other components under steady stress in service.
 - Good low-temperature flexibility is a must for most shock absorbers. The first jolt is critical, regardless of subsequent softness.
 - Resistance to oils and greases is essentially a surface effect: parts with poor resistance to these substances but that have appreciable bulk will not be degraded by such exposure.
- Data courtesy of LORD Corporation.

Sample Problems

Example Problem #1 – Vibration Isolation

Problem: An electric motor and pump assembly, rigidly mounted on a common base, transmits vibration to other components of a hydraulic system. The weight of the assembly and base is 140 lb. Four isolators are to be located at the corners of the rectangular base. The lowest vibratory forcing frequency is 1800 rpm and is the result of rotational unbalance.

Objective: To reduce the amount of vibration transmitted to the supporting structure. A vibration isolation efficiency of 70 to 90 percent is usually possible to obtain. Here a value of 80 percent is selected.

Solution:

1. First find transmissibility, T , which corresponds to the required vibration isolation of 80 percent, ($I = 0.8$)

$$T + I = 1 \text{ or}$$

$$1 - I = T$$

$$1 - 0.8 = 0.2 \quad T = 0.2$$

2. Determine the forcing frequency f_d in cycles per second (Hz). The lowest forcing frequency is used because this is the worst condition. If high isolation is attained at this frequency, isolation will be even better at higher frequencies.

$$\frac{1800}{60 \text{ sec/min}} = f_d = 30 \text{ Hz}$$

3. Determine the natural frequency f_n that the isolated system needs to provide a transmissibility $T = 0.2$. The following equation assumes zero damping.

$$T = \frac{1}{\left(\frac{f_d}{f_n}\right)^2 - 1} \quad \text{solve for } f_n$$

$$T = \frac{f_d}{\sqrt{\frac{1}{T} + 1}} = \frac{30 \text{ Hz}}{\sqrt{\frac{1}{.2} + 1}}$$

$$f_n = 12.2 \text{ Hz}$$

4. Calculate the load at each mounting point. If the center of gravity of the supported mass is centrally located in the horizontal plane, simply divide the total weight by the number of mounting points.

$$140 \text{ lb} \div 4 \text{ mounts} = 35 \text{ lb/mounting point}$$

5. Determine the required static deflection and spring rate. Static deflection (d_s) for this natural frequency is calculated with the formula:

$$f_n = \frac{1}{2\pi} \sqrt{\frac{K}{M}}$$

$$d_s = \frac{9.8}{(f_n)^2} \quad (9.8 \text{ is constant})$$

$$d_s = \frac{9.8}{(12.2 \text{ Hz})^2} = .066"$$

The required spring rate (K) can be calculated with the formula:

$$K = \frac{\text{load (lbs)}}{\text{static deflection } (d_s)}$$

$$K = \frac{35 \text{ lbs}}{.066"} = 530 \text{ lbs/in}$$

530 lb/in is the required spring rate for an isolator at a mounting point. This calculation can be completed using the total weight so the spring rate (K) calculated will be a total spring rate rather than a per mount spring rate. Dividing by the number of mounts will equal a per mount spring rate.

6. Select a mount that has a maximum load rating equal to or greater than the supported point load and a spring rate equal to or smaller than the calculated value. For our example the load/mount is 35 lb, and the spring rate is 530 lb/in. We can select 4 pieces of part number 200P-35 which are rated at 35 lb with a spring rate of 560 lb/in. (Refer to Platform Mounts, Table 1.)
7. Mounts are not always available with the right combination of load capacity and spring rate. Overloading mounts is not recommended. Underloaded mounts will produce less static deflection and not isolate as well. The Isolation Efficiency Curve (in the following section) will help you determine the isolation efficiency you can expect. First calculate the static deflection (d_s) for the actual mount, 200P-35.

$$d_s = \frac{\text{load (lbs)}}{\text{spring rate}}$$

$$d_s = \frac{35 \text{ lbs}}{560 \text{ lbs/in}} = .0625"$$

Check natural frequency:

$$d_s = \frac{9.8}{(f_n)^2} \quad \text{or} \quad f_n = \frac{9.8}{d_s}$$

$$f_n = \frac{9.8}{.0625} = 12.5 \text{ Hz}$$

Check isolation frequency:

$$\frac{1}{\left(\frac{30 \text{ Hz}}{12.5 \text{ Hz}}\right)^2 - 1} = .21$$

Isolation Efficiency $I = 1 - T$

$$I = 1 - 0.21 = 0.79$$

The isolation efficiency of the 200P-35 is 79%.

Example Problem #2 - Shock Isolation

Problem: An electronic component is subjected to an 11 millisecond, 1/2 sine, 20g input and must be isolated. The item's fragility is 15 G's. The weight of the component is 7 pounds and is supported at 4 mounting points.

Objective: Reduce the amount of shock transmitted through the frame to the electronic component.

Solution:

1. First calculate the change in velocity, ΔV , for a 1/2 sine pulse.

$$\Delta V = \frac{2 g G t_o}{\pi}$$

$$= \frac{(386 \text{ in/sec}^2) (20 \text{ g's}) (.011 \text{ seconds})}{\pi}$$

$$\Delta V = 54 \text{ in/sec}$$

2. Calculate the desired natural frequency. Fragility is 15 G's, which is the desired G's output.

$$G_{\text{OUTPUT}} = \frac{\Delta V (f_n)}{\pi} \quad \text{or} \quad f_n = \frac{61.4 (G_{\text{OUT}})}{\Delta V}$$

$$f_n = \frac{61.4 (15 \text{ g's})}{54 \text{ in/sec}}$$

$$f_n = 17 \text{ Hz}$$

3. Calculate the dynamic deflection.

$$d_d = \frac{\Delta V}{2 \pi f_n}$$

$$= \frac{54 \text{ in/sec}}{2 (\pi) (17 \text{ Hz})}$$

$$= .51 \text{ inches single amplitude}$$

4. Determine the minimum thickness of a sandwich mount, T_{\min}

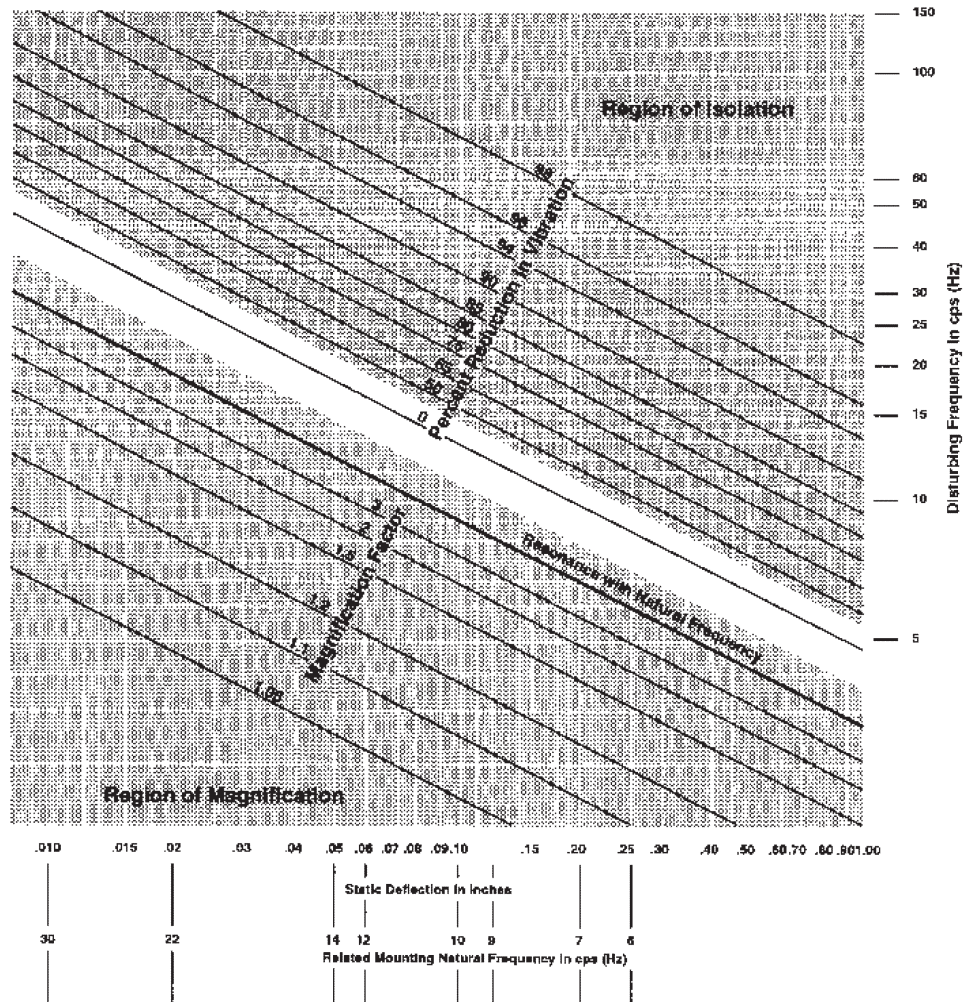
$$T_{\min} = \frac{d_d}{1.5}$$

$$= \frac{.51}{1.5}$$

$$T_{\min} = .34 \text{ inches}$$

5. Select a sandwich mount that has a minimum thickness of 0.34" and can support a shear static load of 1-3/4 pounds (7 pounds/4 mounts = 1.75 lb/mount). Select part number SMB003-0100-3 (refer to Flex-Bolt Sandwich Mounts, Table 1).

Isolation Efficiency Curve for Flexible Mounting Systems



For simple linear vibration, the Isolation Efficiency Curve illustrates the percentage of vibration isolation it's possible to obtain in a flexibly mounted assembly with any combination of static deflection and disturbing frequencies. The bottom area shows the region of magnification of vibration that occurs when the ratio of the disturbing frequency to the natural frequency of the mounted assembly is less than $\sqrt{2}$. A condition of resonance exists when the natural frequency of the assembly and the disturbing frequency are equal. The area illustrates the percentage of the vibratory forces prevented from reaching the supporting structure when proper flexible mountings are selected. Reduction in transfer of vibratory forces is obtained only when the ratio of the disturbing frequency to the natural frequency is greater than $\sqrt{2}$.

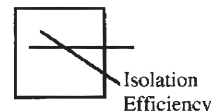
How to Use the Curve

The curve can also be used to arrive at the required static deflection by starting with the disturbing frequency. Find the point where the disturbing frequency and desired percent reduction in vibration line intersect. The vertical line passing through this point is the required static deflection to produce the desired vibration isolation efficiency of the disturbing frequency.

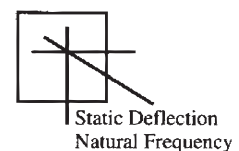
1. Determine f_d (disturbing frequency)



2. Decide on required Isolation Efficiency



3. Vertical line from point of intersection as required d_s (static deflection) and f_n (natural frequency)



$$K_s \text{ (Spring Rate)} = \frac{\text{supported load}}{\text{required static deflection}}$$

Application Selection Guide

	Actuators	Cabs	Computer & Acc.	Conveyors	Delicate Eqpt.	Drive Lines	Electronics	Engines	Engine Gen/Pump Sets	Fans/Blowers	Heating/Cooling Units	Instruments & Gauges	Machinery – Punch, Printing, Milling, Presses	Electric Motors	Pumps/Compressors	Shakers/Vibrators	Vehicle Accessories	Shipping Containers
Grommet Isolators Standard			•		•		•			•		•		•			•	
Platform Mounts Platform			•		•		•	•	•	•	•	•	•	•	•		•	
Heavy-Duty Platform		•		•				•	•	•	•		•	•	•		•	
Multiplane			•		•		•			•	•	•		•	•		•	
Center-Bonded Mounts CB-1100 Series		•						•	•	•	•		•	•	•	•	•	
CB-1180 Series		•						•	•	•	•		•	•	•	•	•	
CBA Series		•						•	•	•	•		•	•	•	•	•	
CBA-50 Series		•						•	•	•	•		•	•	•	•	•	
STA Series		•						•	•						•		•	
Safetied Tubeform Series		•						•	•	•			•		•	•	•	
Conical Mounts		•						•	•	•				•	•		•	
Surface-Effect Mounts		•						•							•		•	
Binocular/Split Mounts		•						•	•	•				•	•		•	
Two-Piece Mounts CBB/CBC Series		•						•	•	•	•		•	•	•	•	•	
SSB Series		•						•	•	•	•		•	•	•	•	•	
CB-2200 Series		•						•	•	•	•		•	•	•	•	•	
Bushings Center-bonded	•	•											•			•		
Square-Bonded													•			•		
Sandwich Mounts Small Industrial Engine Mounts								•	•	•	•			•	•		•	
Small – Metric Threads			•		•		•	•	•	•	•	•	•	•	•	•	•	•
Small – Standard UNC Threads			•		•		•	•	•	•	•	•	•	•	•	•	•	•
Medium				•		•		•	•	•	•		•	•	•	•	•	•
Large				•						•	•		•	•	•	•	•	•
Machinery Mounts Lattice				•	•				•	•	•		•	•	•	•		
Chan-L™ Mounts			•	•	•		•		•	•	•	•	•	•	•	•		
Industrial Shock										•	•		•	•				
Leveling				•						•	•		•					
Couplings Shear-Type			•			•	•				•		•	•	•		•	
Spool-Type						•	•	•	•	•	•		•	•	•		•	
Bushing-Type						•		•	•	•	•				•		•	
LCR Series						•		•	•	•	•		•	•	•		•	
LCD Series						•		•	•						•		•	

A part's listing in this catalog does not guarantee its availability.

To download/print the most current catalog, go to www.lordfulfillment.com/upload/PC7000.pdf.

Rev.2 8/09

Data Required for Industrial Application Analysis

1. Specific name and description of unit: _____

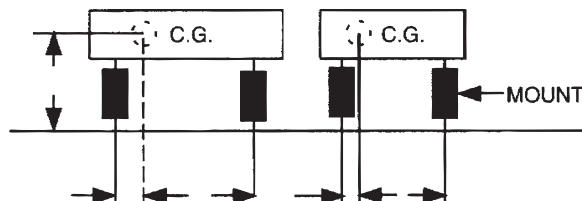
2. Total supported weight: _____ lb

3. Weight distribution or center of gravity location with respect to mounting point:

☐ Centered

☐ Offset (if so, fill in blanks)

Number of mounts: _____



4. Disturbing frequency range: _____ to _____ cpm (or Hz)

5. Primary direction of disturbance: horizontal ☐, vertical ☐, all directions ☐

6. Source of vibration: rotating eccentric weight ☐, rotating machinery ☐,
 other ☐ _____

7. Vibration isolation desired: _____ % min

8. Impact loads on unit: _____ G's, _____ direction.

9. Frequency of impact loads: _____

10. Sway space limitation: _____ in

11. External forces on mounting system:

Belt or chain pull _____ lb, _____ direction.

Distance from C.G.: _____ in, torque reaction _____ lb-in

12. Stationary ☐, or mobile ☐ equipment. If mobile, what type of vehicle?

On-highway ☐, Off-highway ☐.

13. Environmental requirements: Temperature – High _____ °F, Low _____ °F

Solvent exposure (severe) – Oil ☐, Hydraulic fluid ☐, Gasoline ☐,

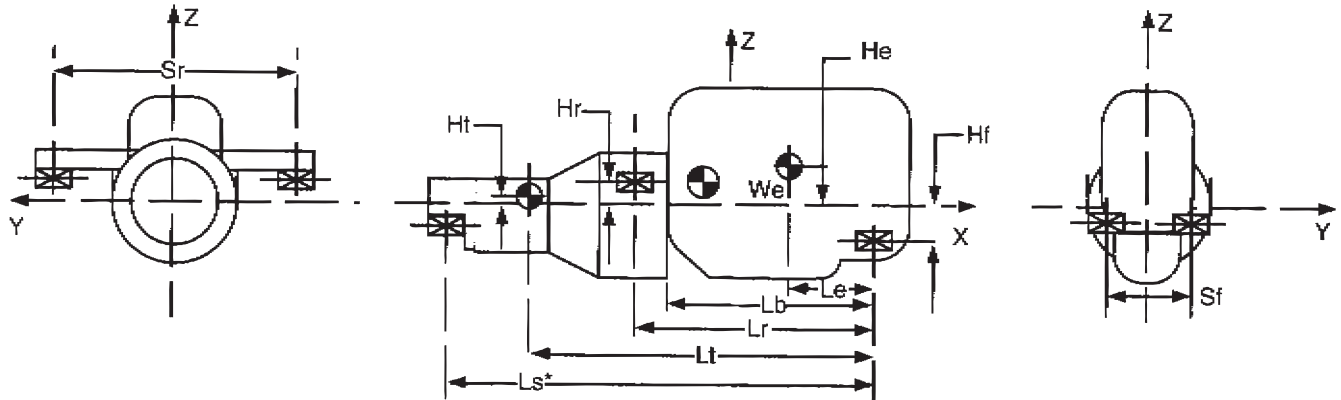
Ozone ☐, Other ☐ _____

Sketch, layout drawing, etc., is desirable.

General comments: _____

Photocopy, complete the questionnaire from catalog, and mail or fax to: LORD Corporation; Application Engineering;
 2000 West Grandview Blvd.; P. O. Box 10038; Erie, PA 16514-0038; Fax # 814.866.1773.

Data Required for Engine Analysis



1. Engine Model & Manufacturer _____
2. Transmission Model & Manufacturer _____
3. Engine Weight (Wet, Including Accessories) We = _____
4. Transmission Weight (Wet) Wt = _____
5. Engine C.G. Height Above CSCL He = _____
6. Transmission C.G. Height Above/Below CSCL Ht = _____
7. Front Mount Location Above/Below CSCL Hf = _____
8. Rear Mount Location Above/Below CSCL Hr = _____
9. Engine C.G. Location Behind Front Mount Le = _____
10. Rear Face of Block Behind Front Mount Lb = _____
11. Rear Mount Location Behind Front Mount Lr = _____
12. Transmission C.G. Location Behind Front Mount Lt = _____
13. Rear Mounting Spread Sr = _____
14. Front Mounting Spread (Zero for Single Front Mount) Sf = _____
15. Engine Speed NI = _____
 - Idle NO = _____
 - Operating
16. Number of Cylinders and Arrangement (I-6, 90° V-8, etc.) _____
17. Two or Four Stroke _____
18. Tail Support Location Behind Front Mount (if applicable) Ls = _____
- 19*. Moments of Inertia of Total System or for all Components Ixx = _____
 (Engine, Transmission, etc.) Iyy = _____
 (If these are not available, a drawing of the Engine/Transmission System Izz = _____
 is required, outline dimensions required.) TO = _____
20. Output Torque (Including highest gear multiplication) _____
21. Firing Sequence _____
22. Crankshaft Arrangement (# of Throws, Staggered Throw, etc.) _____
23. Application: ☐ on-highway; ☐ off-highway; ☐ severe duty (provide details of application) _____

* A tail support mount is necessary if static bending moment on rear face of block (RFOB) is greater than the manufacturing's rating.

Photocopy, complete the questionnaire from catalog, and mail or fax to: LORD Corporation; Application Engineering; 2000 West Grandview Blvd.; P. O. Box 10038; Erie, PA 16514-0038; Fax # 814.866.1773.

Contact Us
For your LORD solution



www.midatlanticrubber.com
sales@midatlanticrubber.com

1-800-536-1620