



## Get Audience Feedback in a Second



XPRESS is an Audience Response System that enhances interactivity in conferences, lectures and presentations. It allows you to receive instant feedback from users at anytime!

## Application

**Instant Voting and Feedback Retrieval**

**Quiz and Test (with auto-marking & answer collection)**

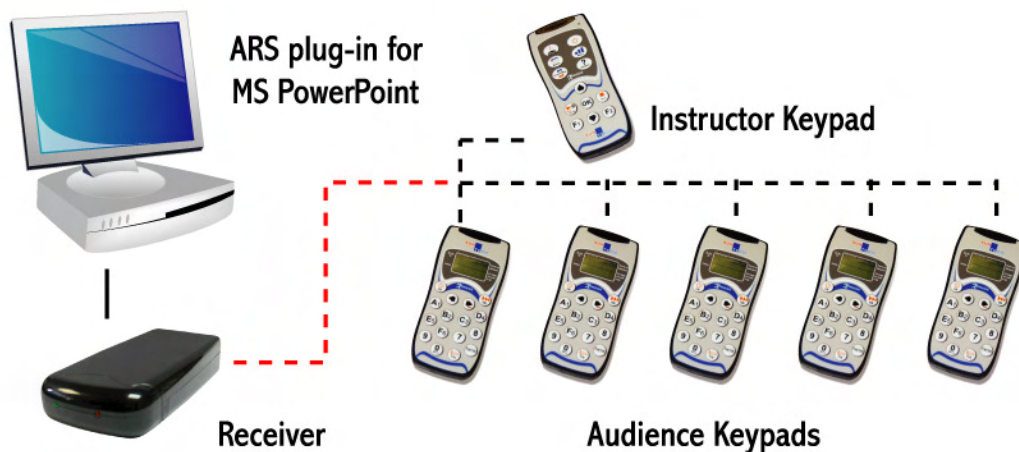
**Corporate Training**

**Conference**

**Game and Contest**

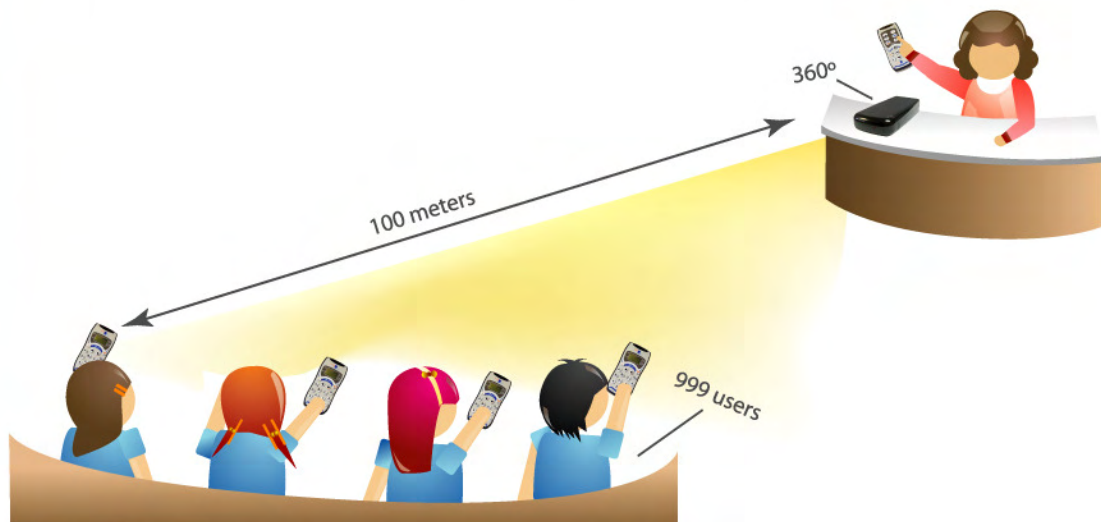
### Professional Design

- ◆ Stylish design of audience keypad with LCD display
- ◆ Portable hardware with light weight receiver for easy transportation
- ◆ Easy and simple installation, just plug and play XPRESS with any USB connection
- ◆ Reliable Radio Frequency technology which gives stable connectivity and better reception



### Better Support & Performance

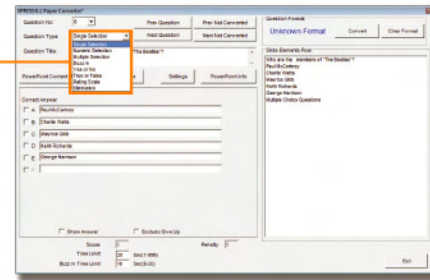
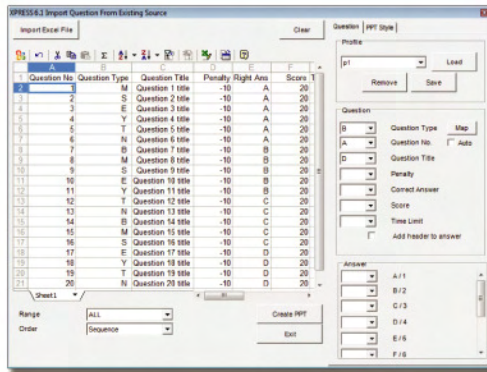
- ◆ Support up to 999 users at the same time
- ◆ With receiving angle of 360 degrees
- ◆ With signal receiving distance of 100 meters
- ◆ Power management on keypads by entering sleep mode when keypads are not in use





## Powerful XPRESS Software

- ◆ Easy and simple to use "Paper Convertor" for educators, trainers and presenters to prepare presentation or quiz content
- ◆ Import questions in Excel format and convert to PowerPoint slides in few seconds
- ◆ Support questions in multiple formats for presentation or quiz event

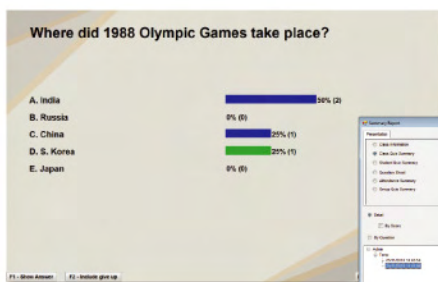
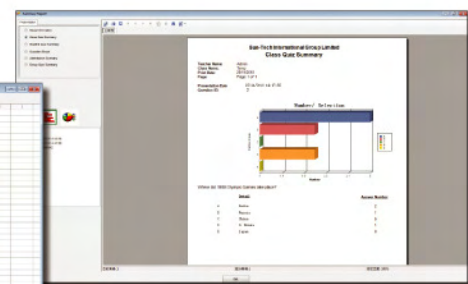


- Single Selection
- Numeric Selection
- Multiple Selection
- Buzz-in
- Yes / No
- True or False
- Rating Scale

- ◆ Support paperless quiz without the use of PowerPoint or Word
- ◆ Collect answer with the receiver and result can be marked automatically

## Grouping & Reporting

- ◆ Audience can be divided into different groups which report could be generated according to groups
- ◆ Display real-time result in diversified modes

- ◆ With the Summary Report Function, various reports can be generated according to different criteria such as individual, class or question
- ◆ Reports can be exported to different formats such as Excel, PDF, Word etc for further analysis

# QNA-XPRESS Audience Response Systems

## Hardware Specifications

### Audience Remote Response Time:

Response time is proportional to the number of participants

Number of Participants	Time required to complete signal retrieval (in second)
100	1.2s

\*Depends on environmental condition

RF Receiver	Dimensions	127mm x 65mm x 27mm
	Power requirement current	Provided by computer USB port (External power is not required)
	Technology	Two-way RF eligible license-free / license-exempt frequencies/ ISM Band
	Receiving angle	RF receiving angle 360°
	Receiving distance	Maximum 100 meters in an open area
	USB cable	USB port to RJ45 port
	Number of participant	Up to 999 users
Instructor Keypad	Dimensions	104mm x 49mm x15 mm
	Control button	13
	Power requirement	Battery size "AAA" 1.5volt x 2 Battery lasts for 1 year
	RF signal	Maximum 100 meters in an open area
	Sleeping mode	Enter sleeping mode after 10 minutes without pressing any key
	RF frequency	2.4GHz
Audience Keypad	Dimensions	104mm x 49mm x15 mm
	Control button	16
	Power requirement	Battery size "AAA" 1.5volt x 2 Battery lasts for 1 year
	RF signal	Maximum 100 meters in an open area
	Sleeping mode	Enter Power sleeping mode after 60 minutes
	RF frequency	2.4GHz

## System Requirements

### Recommended Operating System

- Microsoft Windows XP/ Vista/ 7

### Application

- Microsoft Office 2003 / 2007/ 2010 (32 bit)

### Computer

- A minimum of 1024 MB RAM
- At least 200 MB of hard drive space for software
- Intel Pentium IV 2.4GHz or higher processor
- Screen resolution of 1024 x 768 or higher

### Others

Projection system, i.e. projector, Liquid Crystal Display (LCD)

## SUN-TECH INTERNATIONAL GROUP LIMITED

13/F., Prince Industrial Building, 106 King Fuk Street, San Po Kong, Kowloon, HK  
Tel: (852) 2783 0868 Fax: (852) 2780 6644 Email: sales@suntechgroup.com

© 2011 Sun-Tech International Group Limited. All Rights Reserved.

available from Bramshaw Audience Response Systems  
@ sales@bramshaw.com.au t:1800 507 557