



**BLOOMBERG  
HARVARD**

City  
Leadership  
Initiative

# **Leading Through Crisis**

## **Reducing the Impact of Covid-19 in Latin America and Africa**

Co-moderators:  
**Rawi Abdelal**  
**Jennifer Musisi**

July 30<sup>th</sup>, 2020

# COVID-19 Situation Report

---

**AMANDA McCLELLAND**

Senior Vice President, Prevent Epidemics  
Resolve to Save Lives Initiative, Vital Strategies

---

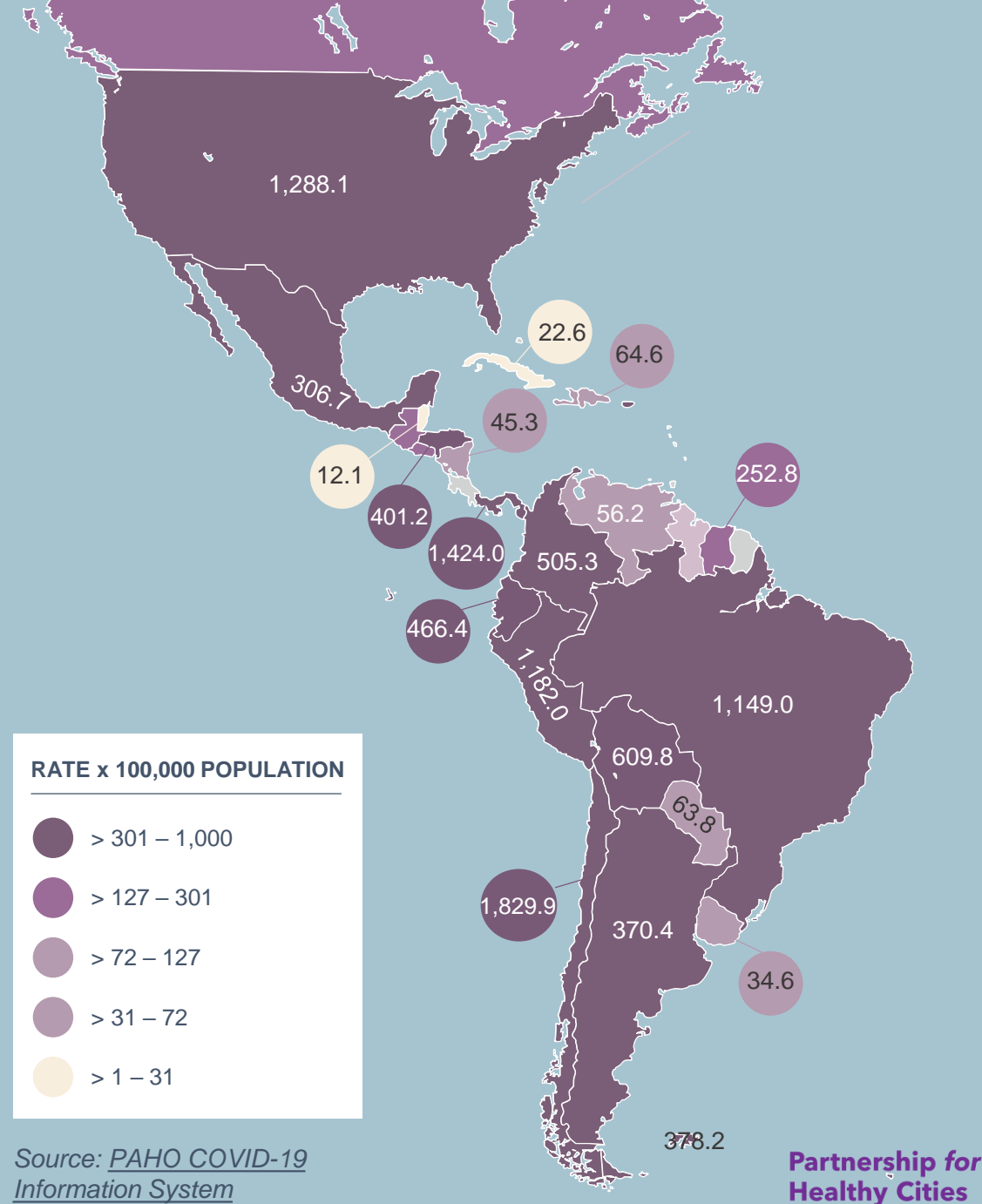
# Latest Data

DATA AS OF 28 JULY 2020	LATIN AMERICA	AFRICA
Total number of cases	4,405,542	726,105
Cases in last 24 hours	56,975	13,185
Total number of deaths	184,430	12,257
Deaths in last 24 hours	1,603	357

Source: <https://www.who.int/emergencies/diseases/novel-coronavirus-2019/situation-reports>

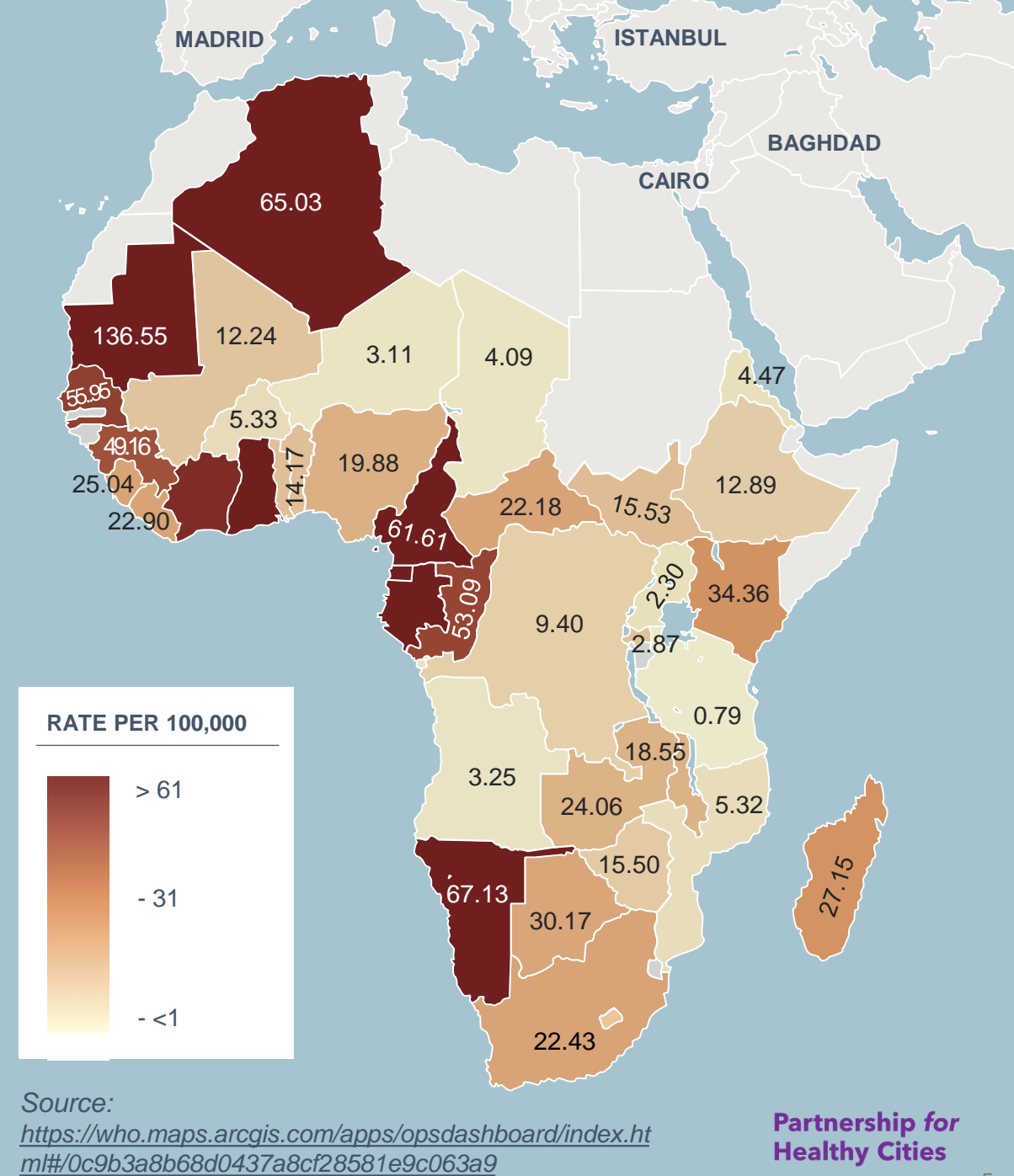
## WHAT'S NEW In Latin America

- ▶ **More cases in Latin America** than any other WHO region over past day
- ▶ More than **double the number of COVID-19 deaths** than any other region over past day
- ▶ **Widespread circulation of bogus theories** regarding treatments and cures



# WHAT'S NEW In Africa

- ▶ **Expanding** community transmission
- ▶ Data on COVID-19 testing rates by country is **highly variable**
- ▶ **Widespread circulation of bogus theories** regarding treatments and cures

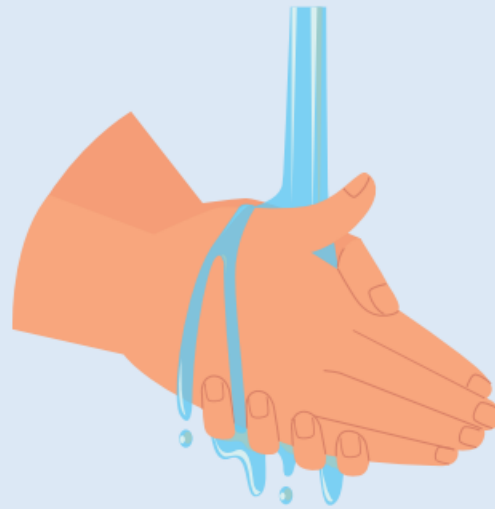


# 3 W's to reduce risk of COVID-19

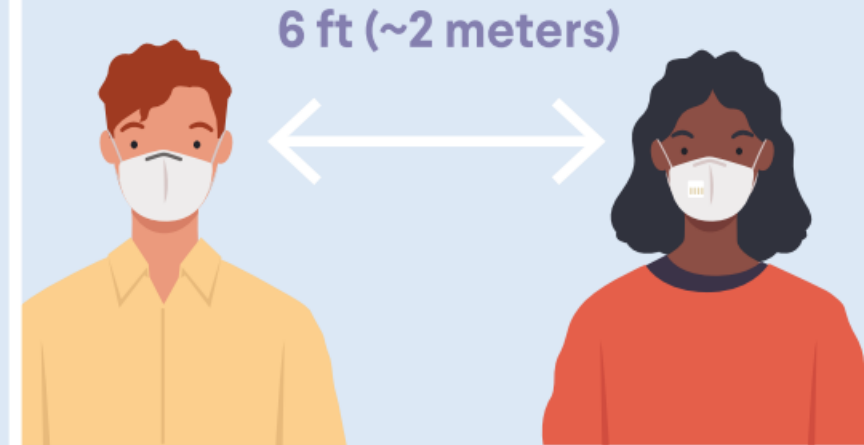
**W**ear a mask



**W**ash your hands



**W**atch your distance





# Wearing a Mask

## WHAT DO WE MEAN?

- ▶ **Types** of mask and **role** in prevention
- ▶ **Setting** – when and where and how

## MAYORS CAN

- ▶ Model good behavior
- ▶ Communicate importance of mask use
- ▶ Mandate mask use
- ▶ Distribute masks
- ▶ Monitor PPE availability and ensure protection of health care workers
- ▶ Promote local PPE production

**W**ear a mask



# Washing Your Hands

## WHAT DO WE MEAN?

- ▶ Soap and water
- ▶ Hand sanitizer
- ▶ Duration – 20 seconds minimum

## MAYORS CAN

- ▶ Distribute handwashing solutions
- ▶ Increase access to sanitation services
  - Deploy handwashing stations
- ▶ Promote local production of handwashing solution or sanitizer
- ▶ Initiate behavior change campaigns

# Wash your hands





# Watch Your Distance

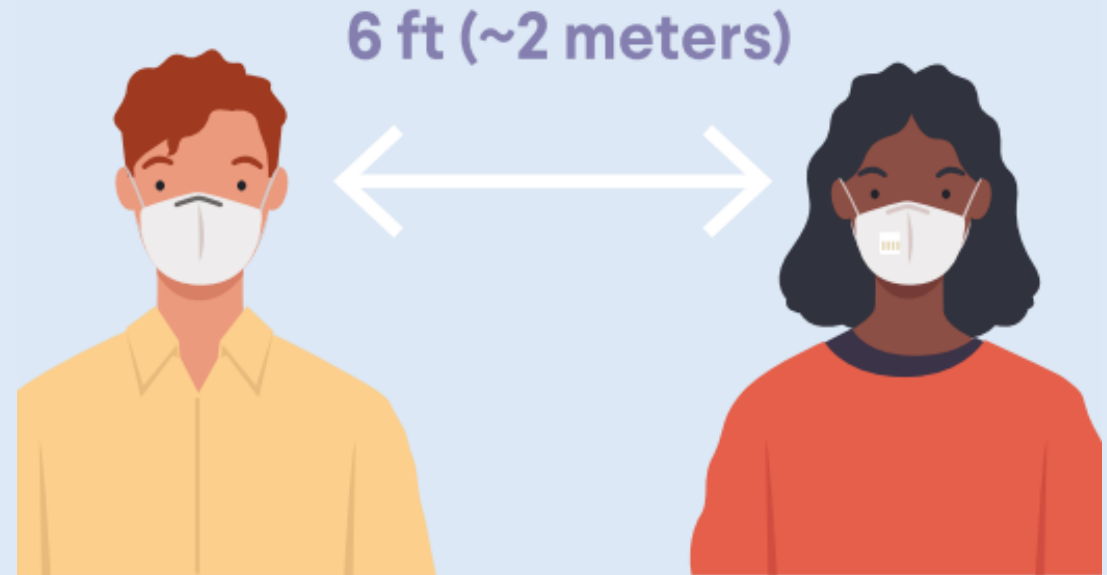
## WHAT DO WE MEAN?

- ▶ **Distance** – At least 2 meters
- ▶ Factors that **impact** recommended distance

## MAYORS CAN

- ▶ Selectively shield high-risk populations
- ▶ Regulate public spaces
  - Setting market hours
  - Adjusting transit operations
- ▶ Promote “shift work”

## Watch your distance



# Monitoring Adherence

---

Self-report      ▶      Direct observation      ▶      Tracking resource utilization

---



---

# Mayors Can:

---

- ▶ Model best practices
- ▶ Conduct communication campaigns
- ▶ Engage influencers
- ▶ Incorporate into educational programs
- ▶ Enact mask policy

## Protect yourself. Protect others.

By wearing a mask you not only protect your life, but also the lives of those you care about the most. Join the **#MaskUpMandela** movement and show your support to those who are sacrificing to serve us and our country during this time. This is one of many ways we are playing our part to **#FlattenTheCurve**.

CORONAVIRUS OUTBREAK NATIONAL  
HOTLINE: 0 800 029 999  
08h00 - 16h00 (Monday - Friday)



Wear it when you  
go out



Try not to touch it



Wash it every 2 days



Make sure it covers  
nose & mouth

# Thank You!

**Partnership for  
Healthy Cities**

**Bloomberg  
Philanthropies**





The background of the image is a dark red color with a white line-art map of a city grid. The grid consists of numerous rectangular blocks of varying sizes, some of which are irregular. The lines are thin and white, creating a high-contrast pattern against the red background.

**BLOOMBERG  
HARVARD**

City  
Leadership  
Initiative