

Wilshire

Wilshire Monday Market Flash

November 6, 2023

Market Performance as of 11/3/2023

US Equity	WTD	MTD	OCT	SEP	QTD	Q3 2023	YTD
FT Wilshire 5000	6.03	4.12	(2.75)	(4.88)	1.25	(3.64)	12.56
Standard & Poor's 500	5.88	3.94	(2.10)	(4.77)	1.75	(3.27)	15.05
Wilshire US Large Cap	5.91	3.99	(2.51)	(4.81)	1.38	(3.53)	13.52
Wilshire US Large-Cap Growth	6.35	4.43	(1.78)	(5.53)	2.57	(3.53)	30.15
Wilshire US Large-Cap Value	5.38	3.45	(3.38)	(3.91)	(0.05)	(3.54)	(2.26)
Wilshire US Small Cap	7.61	5.83	(6.43)	(5.99)	(0.98)	(5.25)	1.25
Wilshire US Small-Cap Growth	6.70	5.14	(7.07)	(6.26)	(2.29)	(5.19)	6.62
Wilshire US Small-Cap Value	8.49	6.49	(5.80)	(5.72)	0.31	(5.31)	(1.64)
Non-US Equity	WTD	MTD	OCT	SEP	QTD	Q3 2023	YTD
MSCI ACWI-ex-USA (Net)	4.27	4.27	(4.13)	(3.16)	(0.03)	(3.77)	5.30
MSCI EAFE (Net)	4.43	4.28	(4.05)	(3.42)	0.05	(4.11)	7.13
MSCI EM (Net)	3.12	3.63	(3.89)	(2.62)	(0.40)	(2.93)	1.42
MSCI ACWI-ex-US Small cap (Net)	4.85	4.65	(5.59)	(3.76)	(1.20)	(1.70)	3.77
Global Equity	WTD	MTD	OCT	SEP	QTD	Q3 2023	YTD
MSCI ACWI (Net)	5.31	4.11	(3.01)	(4.14)	0.98	(3.40)	11.14
MSCI ACWI Minimum Volatility (Net)	3.13	2.44	(1.71)	(2.16)	0.68	(2.51)	1.87
Fixed Income	WTD	MTD	OCT	SEP	QTD	Q3 2023	YTD
Bloomberg U.S. Aggregate	1.99	2.30	(1.58)	(2.54)	0.68	(3.23)	(0.53)
Bloomberg Long Term Treasury	3.96	4.86	(4.93)	(7.29)	(0.31)	(11.83)	(8.84)
Bloomberg U.S. TIPS	1.46	1.88	(0.72)	(1.85)	1.14	(2.60)	0.36
Bloomberg U.S. Corporate High Yield	2.76	2.46	(1.16)	(1.18)	1.26	0.46	7.20
Credit Suisse Leveraged Loan	0.30	0.30	0.03	0.88	0.33	3.37	10.27
JPM EMBI Global Diversified	2.96	2.64	(1.35)	(2.60)	1.25	(2.23)	3.04
Real Assets	WTD	MTD	OCT	SEP	QTD	Q3 2023	YTD
Wilshire Global Real Estate Securities	8.22	6.12	(4.74)	(6.42)	1.09	(6.33)	(3.37)
FTSE Global Core Infrastructure 50/50	5.78	4.59	(1.70)	(4.60)	2.81	(7.80)	(4.61)
Alerian Midstream Energy	4.89	4.21	(0.32)	(0.67)	3.88	2.49	11.27
Bloomberg Commodity	(0.28)	0.63	0.27	(0.69)	0.90	4.71	(2.58)
Gold	(0.68)	0.44	7.32	(4.72)	7.79	(3.68)	9.24
Bitcoin	2.32	(0.09)	28.80	3.42	28.69	(11.48)	108.82

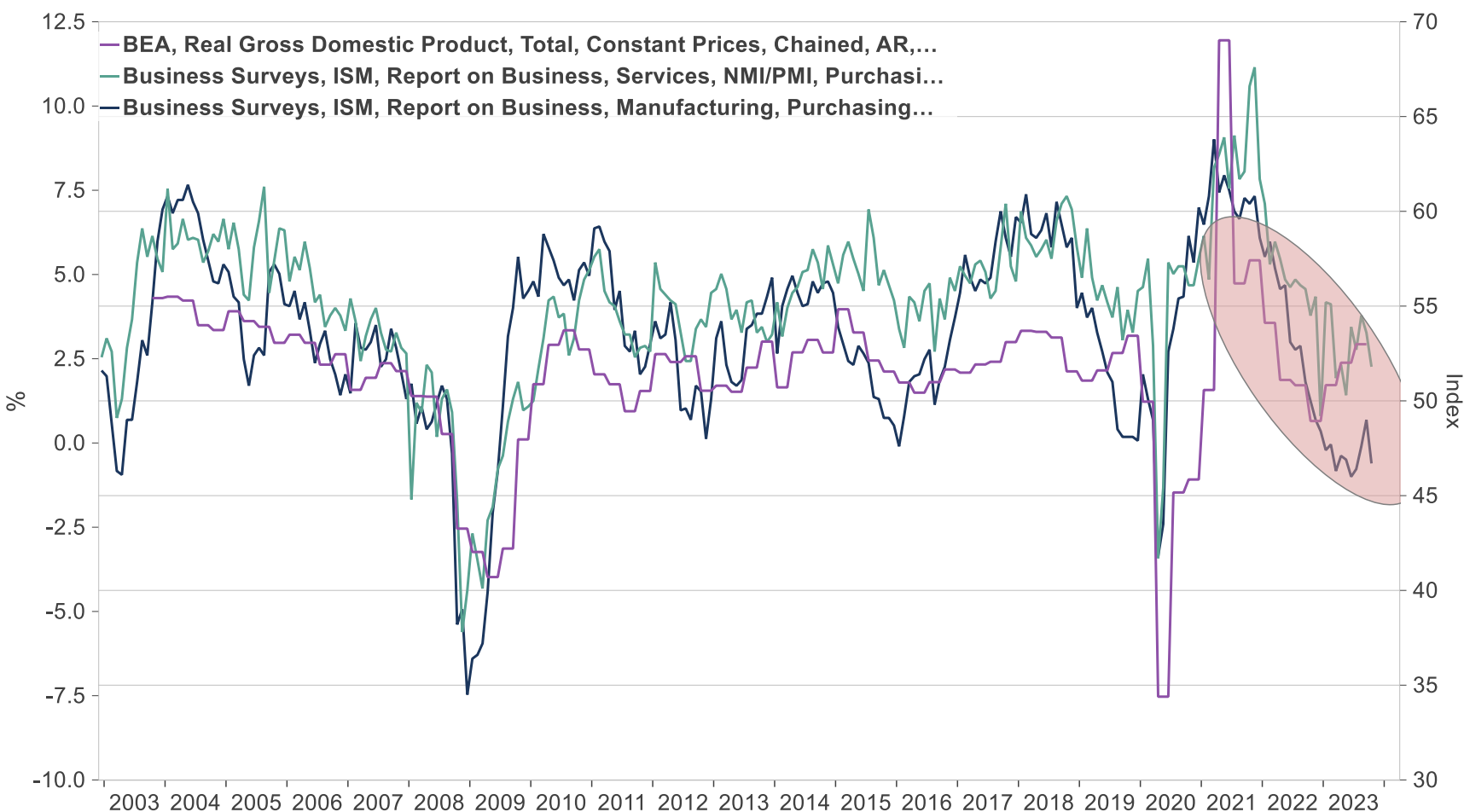
Data Source: Bloomberg

Treasury Bond Yields Tumble on Weaker Data and Less Hawkish Fed



Data Source: Bloomberg

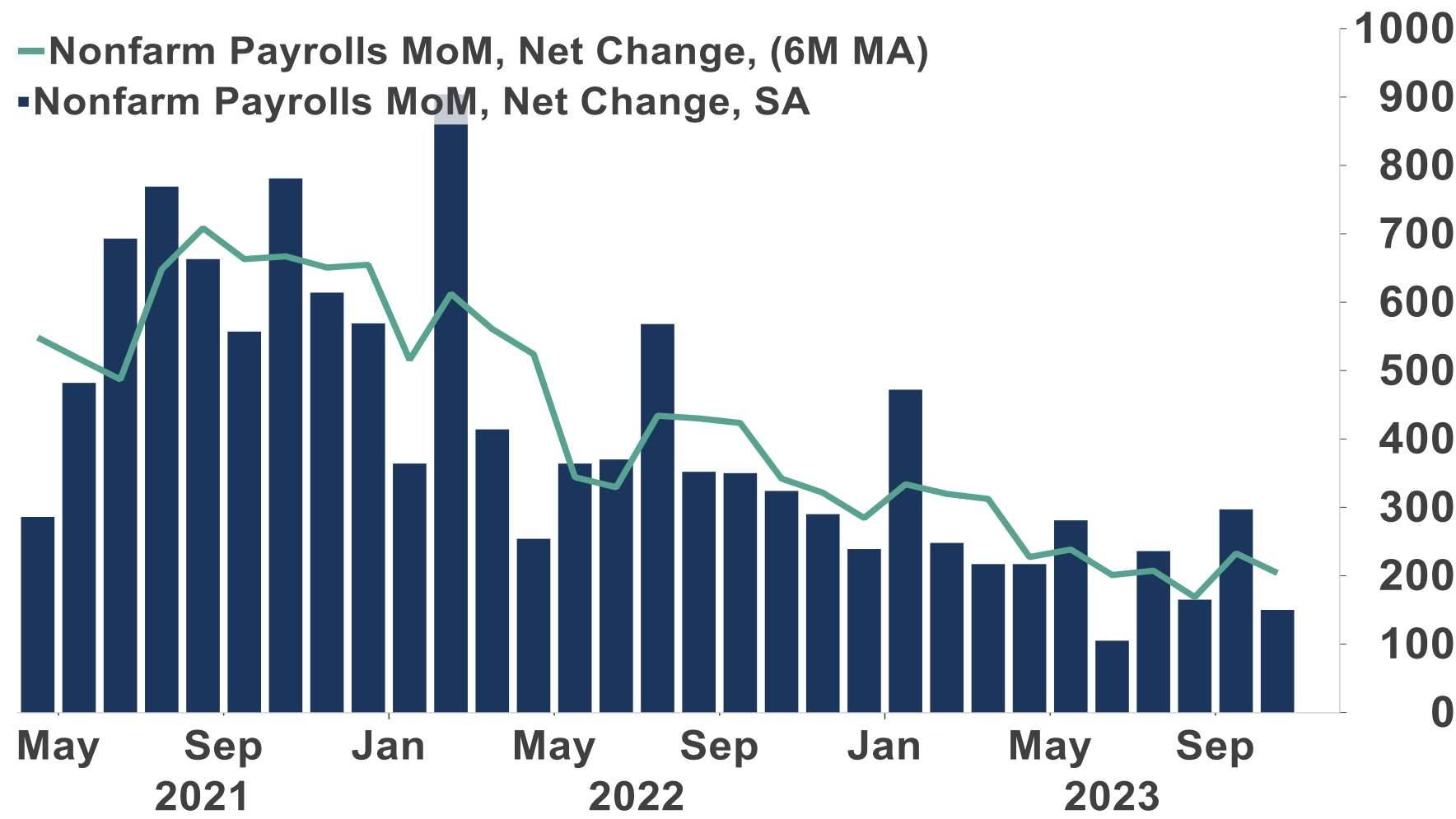
ISM Surveys Surprise to the Downside



Source: Institute for Supply Management (ISM), U.S. Bureau of Economic Analysis (BEA), Macrobond

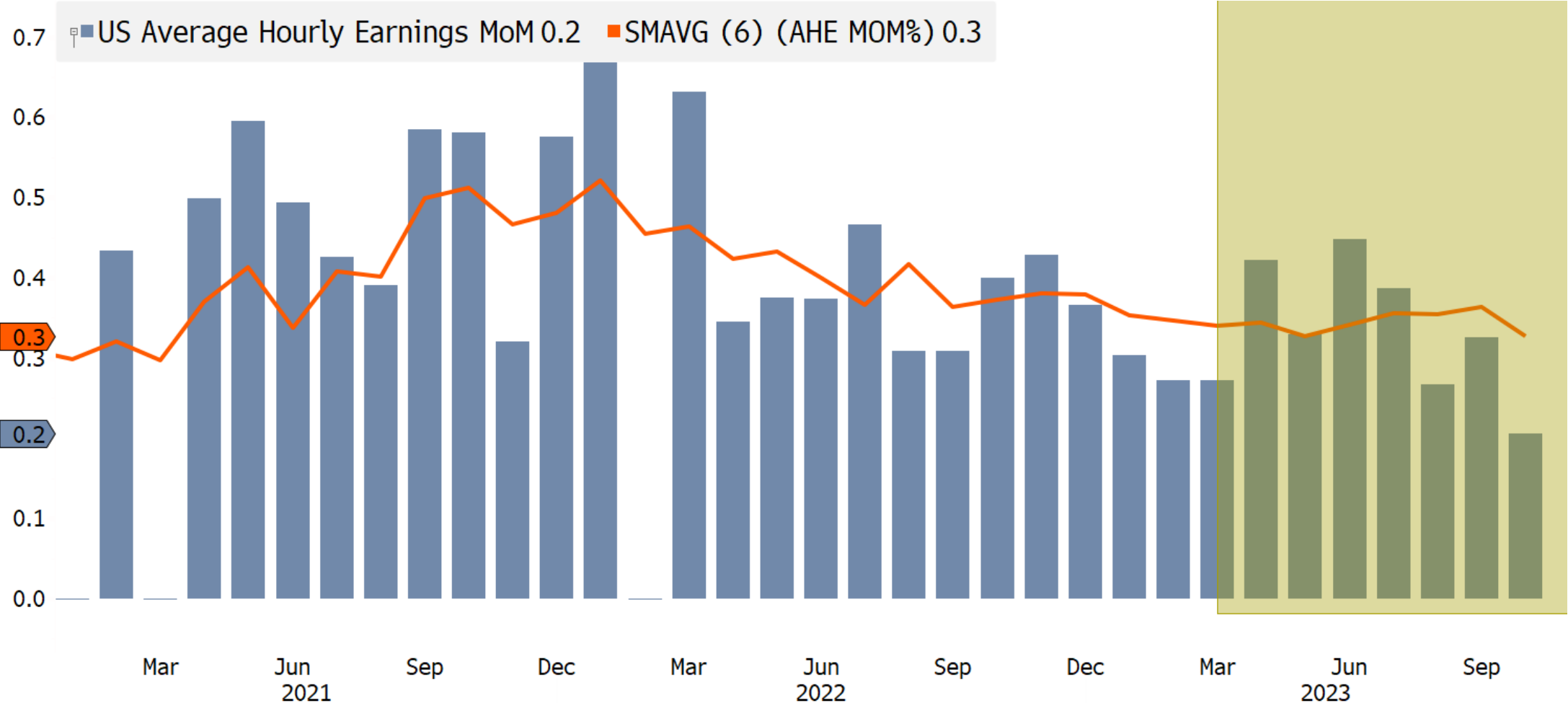
Data Source: Macrobond

Payrolls Surprise to the Downside



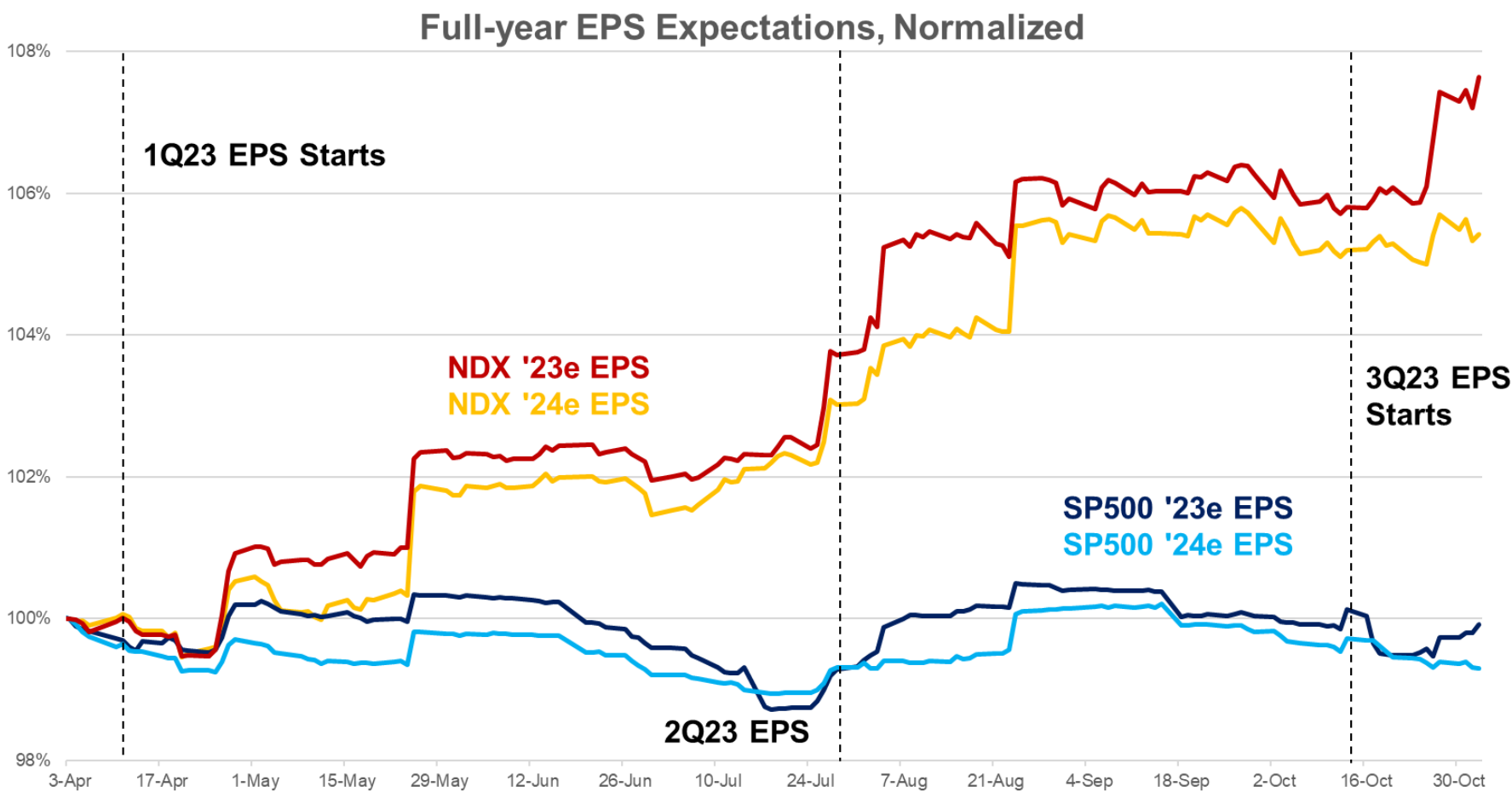
Data Source: Macrobond

Payrolls Surprise to the Downside



Data Source: Bloomberg

EPS Expectations for 2024 are Beginning to Decline



Data Source: Morgan Stanley Thematic Strategy, Factset

The Week Ahead: 11/6/2023 – 11/10/2023

Economic Data Releases:

- Tuesday: Trade Balance
- Wednesday: Mortgage Applications
- Friday: U. of Michigan Consumer Sentiment

Important Information

For institutional and investment professionals only. Not for public distribution.

This material is distributed or presented by Wilshire Advisors LLC ("Wilshire") for informational or educational purposes only and should not be considered a recommendation of any particular security, strategy or investment product, or as investing advice of any kind. Wilshire is not providing this material in a fiduciary capacity, and the information may not be relied upon for or in connection with the making of investment decisions. Nothing in the materials constitute a solicitation of an offer to buy or sell securities, nor is it intended to be and should not be construed as legal or tax advice. The information does not consider any investor's particular investment objectives, strategies, tax status or investment horizon. Always consult a financial, tax and/or legal professional regarding your specific situation.

This material contains opinions of the presenters or authors, but not necessarily those of Wilshire or its affiliates. The opinions contained herein are subject to change without notice. Forward-looking statements, estimates, and certain other information contained in this material are based upon proprietary and non-proprietary research and other sources believed to be reliable but are not assured as to accuracy. Past performance is not indicative of future results. This material represents the current opinion of Wilshire and is subject to change without notice. Wilshire assumes no duty to update any such opinions.

The information and materials presented may not be disclosed, reproduced or redistributed, in whole or in part, to any other person or entity without prior written permission from Wilshire. Wilshire gives no representations or warranties as to the accuracy of the information provided and accepts no responsibility or liability (including for indirect, consequential, or incidental damages) for any error, omission or inaccuracy in such information and for results obtained from its use.

Wilshire is a global financial services firm providing diverse services to various types of investors and intermediaries. Wilshire's products, services, investment approach and advice may differ between clients and all of Wilshire's products and services may not be available to all clients. For more information regarding Wilshire's services, please see Wilshire's ADV Part 2 available at www.wilshire.com/ADV.

This material may include estimates, projections, assumptions and other "forward-looking statements." Forward-looking statements represent Wilshire's current beliefs and opinions in respect of potential future events. These statements are not guarantees of future performance and undue reliance should not be placed on them. Such forward-looking statements necessarily involve known and unknown risks and uncertainties, which may cause actual events, performance and financial results to differ materially from any projections. Forward-looking statements speak only as of the date on which they are made and are subject to change without notice. Wilshire undertakes no obligation to update or revise any forward-looking statements.

Wilshire Advisors LLC (Wilshire) is an investment advisor registered with the SEC. Wilshire® is a registered service mark. All other trade names, trademarks, and/or service marks are the property of their respective holders.

Copyright © 2023 Wilshire Advisors LLC. All rights reserved.