

Knowledge Impact Network™

Knowledge Impact Network™ (KIN) is a movement of purpose-driven leaders and innovative social entrepreneurs. Our desire is to alleviate some of the world's most urgent issues by exchanging skills, insights, and connections to accelerate progress in these areas. We strive to secure a brighter future for all.



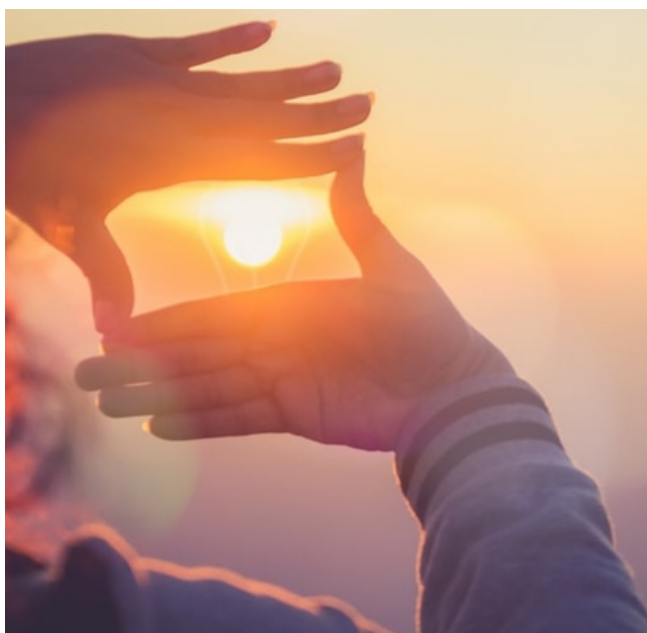
CATALYZE SESSIONS

Catalyze Sessions are focused, 90-minute pro bono workshops in which 3-6 purpose-driven leaders (Knowledge Partners) interact with and advise social ventures on overcoming a specific challenge or seizing an opportunity. At the conclusion, each Knowledge Partner pledges to perform a follow-up action. After the session, we will track the pledges, facilitate further 1:1 connections, and support your success along the way.

SAMPLE FOCUS QUESTIONS:

1. What can we do to let more people know about us?
2. What types of partnerships should we forge to help achieve our full potential?
3. Are we focused on the right markets and, if not, what new ones might we consider?
4. How could we significantly strengthen our messaging on our website or pitch deck?
5. How could we update, streamline or enhance our infrastructure to overcome a specific challenge we are having with our technology, HR, or operations?

WHY LEVERAGE KIN



Get pro bono knowledge—skills, insights, and connections—from a group of curated talented leaders who want to support your venture.

Build momentum. All leaders pledge action after your engagement. Leverage them to expand your contacts, advisors, or board.

Raise awareness of your cause through KIN's active communications with its network.

Connect with the broader KIN ecosystem through our Circles platform to develop new networks.

Access specially designed learning events.

CRITERIA FOR SOCIAL VENTURES

- Has a specific, focused question that must be addressed to scale your impact.
- Operates in one of our impact areas of focus: Core Human Needs (food, water, shelter and health), Educating for Workforce Readiness, or Mitigating Climate Risk.
- In operation for at least one year and has at least two paid employees.
- Has a proven and shareable track record of success in creating impact.






COMMITMENT REQUIRED

- C-suite, executive, or board member must attend the 90 minute Catalyze Session.
- Must have a representative available to support approximately 1 hour of pre-session activities such as providing preparatory briefing materials.
- Must have a representative available to engage in approximately 1-2 hours of post-session activities such as responding to surveys, holding an interview, tracking and sharing progress, etc.

Ventures may be non-profit or for-profit, may have a domestic, regional, or global focus, and may not advocate for a specific political or religious objective.



HOW TO ENGAGE

-  **1 Submit interest.** Complete the basic [Engagement Interest Form](#) linked below.
-  **2 Discuss.** We will contact you to understand your needs. If eligible, we will forward an application.
-  **3 Review by KIN.** Our Selection Committee will review applications based on fit, viability, and potential impact. Status is communicated within two to three weeks.
-  **4 Unlock knowledge.** Share your cause, gain new insights and scale your venture.
-  **5 Stay connected.** Share updates, communicate your impact, continue to leverage our growing networks.



After the session we will share a brief meeting summary and pledges of action from all the participants. You may contact the participants on follow-ups. We will contact you a month after the session and periodically thereafter to check on the longer-term impact of the session and progress on the pledges. We may feature your organization in our communications to our broad leadership ecosystem and continue to facilitate connections that would support your impact.

[Engage](#)

Share knowledge. Scale impact. Shape the world.