

Workforce Development Hub

End-to-end management platform for:

State Agencies

Energy Offices, Workforce Development, etc.

Training Providers

Everblue, Green Training USA, etc.

Industry Associations

BPA, HPIP, NASCSP, etc.

Weatherization Agencies

Community Action Inc.

Standard Bodies

BPI, RESNET, etc.

Employers & Utilities

Austin Energy, Honeywell, etc.

Individual Applicants

Improved accessibility, improves outcomes

Federal Gov Departments

DOE, DOL, etc.

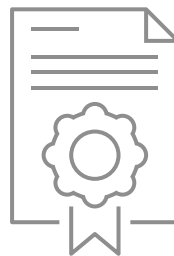
The Apprentice's Pathway



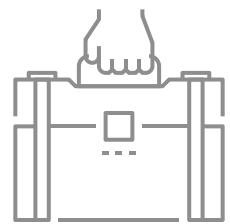
**Get a Job in an
Apprenticeship**



Training



Certification



**Skilled
Employee or
Business
Owner**

Workforce Development Hub

The Technology

Everblue provides an end-to-end learning management, apprenticeship tracking, DEI tracking, and certification platform for state agencies, trainers, etc.

Application for Apprenticeship

Lorem ipsum dolor sit amet, consectetur adipiscing elit.

▶ Lorem ipsum dolor sit amet, consectetur adipiscing elit, sed do eiusmod tempor incididunt ut labore et dolore magna aliqua. Et pharetra pharetra massa massa ultricies mi quis hendrerit dolor.

▶ Nibh sit amet commodo nulla facilis.

▶ In ornare quam viverra orci sagittis eu volutpat.

Lorem ipsum dolor sit amet,

Form fields: Lorem, Lorem, Lorem, Lorem, Lorem, Lorem, OR, Lorem, Lorem, Add Address

Process Engine

Approval Requested → Decide On Approval (1st Stage) → Approved? → Yes → Request Approved (2nd Stage) / No → Request Projected (2nd Stage) → Decide On Approval (2nd Stage) → Approved? → Yes → Request Approved (2nd Stage) / No → Request Projected (2nd Stage)

1. Application

A robust, dynamic, and customizable application form that feeds into an approval workflow and tracks DEI data & compliance.

Proctoring

Select a tenant to filter orders by, or use search.

Search: [A search] [All records]

Filters: Status: Pending, Proctor: All, Date: MM/DD/YYYY

Tenant	Date	Attempt #	Batch	Attempt ID	Score	Exam	Status	Pass/Fail	Proctor	First	Last	Actions
UAT	Thu Apr 28 2022 18:40:37	1	2022-05-01	2000	88.3%	Super Mario 64	Pending	Pass	Proctor	Mario	Mario	View Attempt
UAT	Thu Apr 28 2022 18:50:07	1	2022-05-01	2001	64%	Super Mario 64	Pending	Full	Proctor	Mario	Mario	View Attempt

Showing 1 to 2 of 2 Exam Attempts

2. Training Management

A secure back-end portal for agencies and companies to monitor course progress and engagement.

Workforce Development Hub

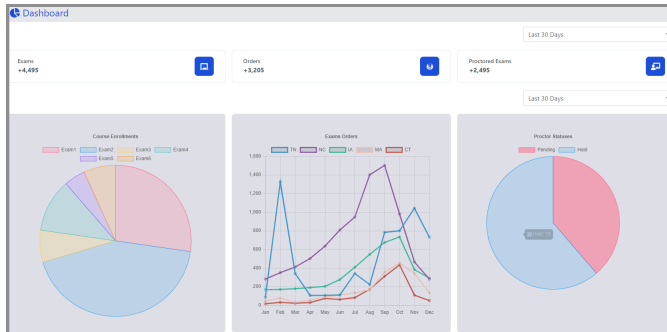
The Technology

3. Real-Time Reporting

Representatives - Manage caseload & see apprentice progress.

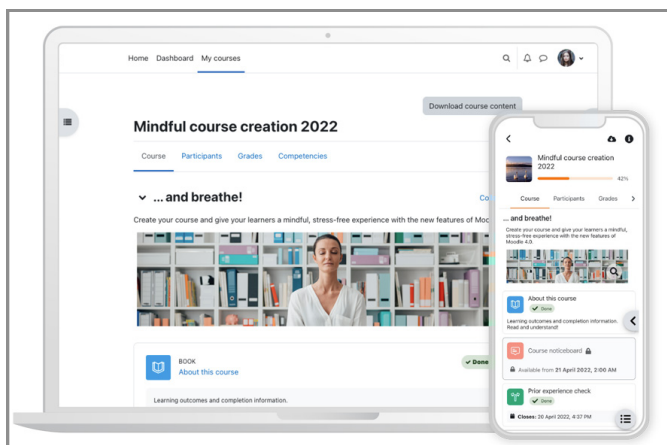
Companies - Eliminate guesswork & time-consuming tasks associated with administering programs.

Agencies - Manage multiple companies & apprentices seamlessly.



4. User View

Participants log in with unique credentials and view a clean, white-labeled environment for their online training and testing.



Workforce Development Hub

Key Features

DEI Tracking



Learning Management System



Certification Management



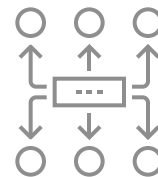
Job Tasks & OJT



Financial Payments



Integrations



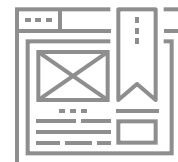
Accessible 24/7 Online



User Friendly



Modular



Workforce Development Hub

About Everblue

We help state agencies to streamline their workforce development practices.

Our career path tracking platform provides a central repository for users to administer, participate, and supervise the delivery of high quality, standardized education and apprenticeship experience.

Green Jobs Training & Software Firm

White House Champion of Change Award Recipient

- Founded in 2008
- Veteran Owned Small Business
- 37 employees
- In-house software developers

Everblue State Customers Include

