

BLOWDOWN SEPARATORS - STANDARD VENTED



BTANK-10

BTANK-18

BTANK-16

(Canada Approved)

Features

Boiler blowoff is an essential part of maintenance. If not performed regularly, the dissolved solids entering the boiler with the feed water accumulate at the bottom of the pressure vessel and form sludge. When the amount of sludge is so high that it covers the electrical heating elements in the boiler, they will fail prematurely.

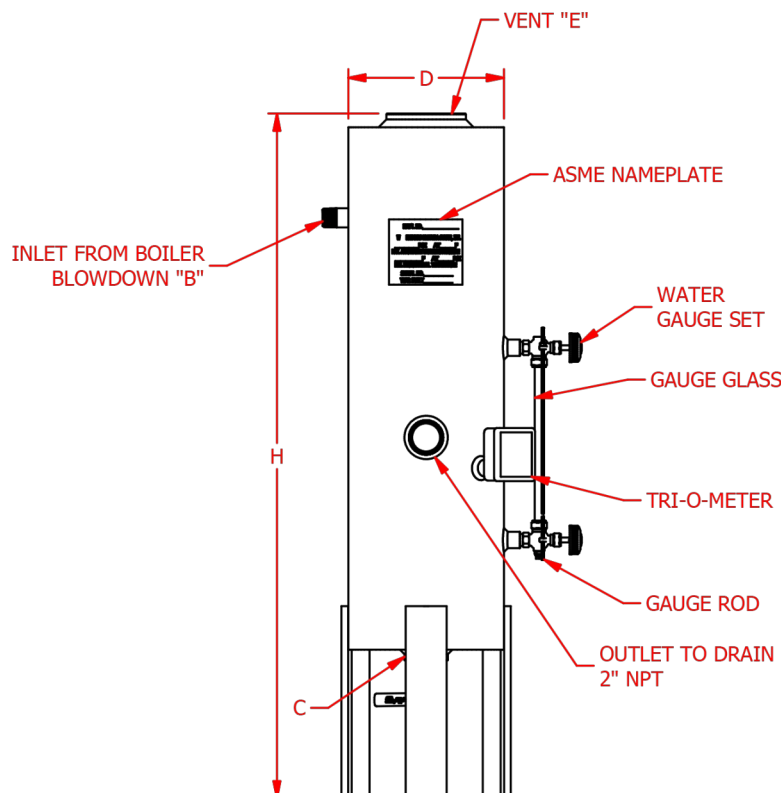
Boiler blowoff is the process of discharging boiler water under pressure from the pressure vessel so that the accumulated sludge gets flushed out. This process must be performed properly. Otherwise it can be dangerous and may lead to injury.

The safest means for performing a boiler blowoff is the use of a blowoff vessel. Reimers Electra Steam, Inc. offers two types of blowoff vessels: vented and unvented. Both types of vessels are designed, manufactured and inspected to the ASME Code, Section VIII and comply with the National Board NB-27 document "A Guide for Blowoff Vessels". This compliance is required by most State Boiler Laws and Statutes. Always verify Local and State requirements prior to purchase.

Standard Equipment of Blowdown Separator Includes:

- Water Gauge Set
- Gauge Glass
- Tri-O-Meter (PSI/Temp Gauge)

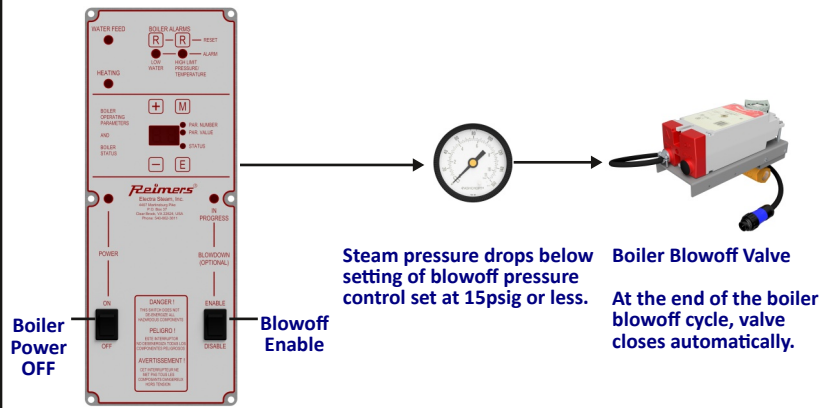
MODEL	INLET "B"	DRAIN "C"	DIAMETER "D"	VENT SIZE "E"	HEIGHT "H"	SHIP WEIGHT lbs	B.H.P. RANGE	K.W. RANGE
BTANK-10	1" NPT	2" NPT	10.75"	4" NPT	48"	185	0-12	0-120
BTANK-18	1" NPT	2" NPT	18.75"	2.5" NPT	44"	300	0-20	0-200
BTANK-16	1" NPT	2" NPT	16"	4" NPT	55"	325	0-51	0-510



Please note that all information provided within this brochure is approximate and subject to change without notice.
Please contact Reimers Electra Steam, Inc. with any questions regarding the specifications or dimensions detailed within.

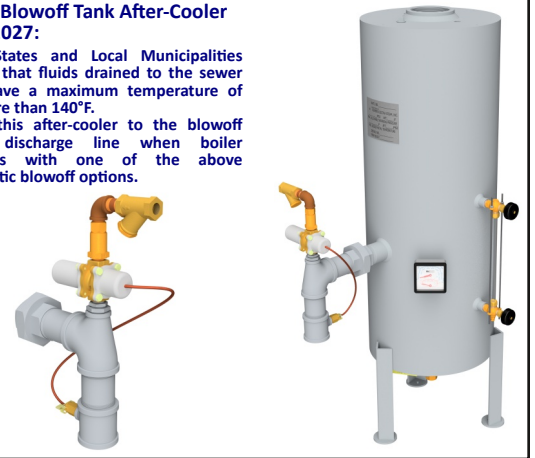
Optional Equipment

Pressure Controlled Boiler Blowoff System Automatic Flush & Drain # OPT1016 (Not suitable for 24/7 operation):



Boiler Blowoff Tank After-Cooler #OPT1027:

Most States and Local Municipalities require that fluids drained to the sewer shall have a maximum temperature of not more than 140°F. Install this after-cooler to the blowoff tank discharge line when boiler operates with one of the above automatic blowoff options.



Timer Controlled Boiler Blowoff System (Suitable for 24/7 operation), # OPT1001:

