

FLO-TEL XD

NON-INVASIVE BURST DETECTION FOR EXPLOSIVE DUST ENVIRONMENTS

*The FloTel XD consists of our **non-invasive, reusable Flo-Tel burst detection system plus a certified junction box.***



Flo-Tel XD detects a burst rupture disc and transmits the break in continuity to a DCS. It is the first dual-certified Exd/EXia/b non-invasive system on the market to do this, and is suitable for use in Zones 0, 1 and 2.

Once installed and in service, the disc detection system requires no further electrical maintenance. Non-electrically trained operators may safely carry out checks using our unique and intrinsically safe Test-Tel unit.

Flo-Tel XD is reusable. Should a disc rupture, simply replace the disc and can then refit the Flo-Tel XD to the holder.

Temperature -40°F to 572°F

IP rating 66, 67

Cable lengths available Industry-standard

Connection See junction box and fittings specifications on next page

**Let us help you with all
your pressure relief questions.**

US office | Broken Arrow
+1 (918) 258 5626 | info@osecoelfab.com

UK office | North Shields
+44 (0)191 293 1234 | uksales@osecoelfab.com

osecoelfab.com



TECHNICAL SPECIFICATIONS



Temperature range	-40°F to 572°F (-40°C to 300°C)
IP rating	67
Product markings	II 2 G Ex d IIC 120°C Gb -40°C ≤ Ta ≤ 100°C IP66/IP67 II 1 D Ex ta IIIC T120°C Da -40°C ≤ Ta ≤ 100°C IP66/IP67 II 1 G Ex ia IIC 120°C Ga -40°C ≤ Ta ≤ 100°C IP66/IP67 II 1 D Ex ia IIIC T120°C Da -40°C ≤ Ta ≤ 100°C IP66/IP67
Cable lengths available	Compatible with most industry-standard cables
Standard materials	Stainless Steel, marine grade available
Junction box	Weidmuller 2.5mm ² AKZ terminals, mounted on an internal DIN-Rail. One additional spare terminal is fitted for user convenience. Two earthing clamps, one internal and one external.
Junction box fittings	3x M20 tapings 2x M20 EXd stopping-plugs Optional: Vacant tapings to fit with M20 cable glands. Please let us know if you would like this option.
Cycling or static service	Non invasive design is not affected by downstream pressure fluctuations or corrosion.
Leak tightness	Sensor is not in contact with the process therefore there are no potential leak paths.
Design Standards	Complies with EN IEC 60079-0:2018, EN IEC 60079-1:2014, EN IEC 60079-11:2012 and EN IEC 60079-31:2014

Certifications

ASME UD
CRN
PED 2014/68/EU

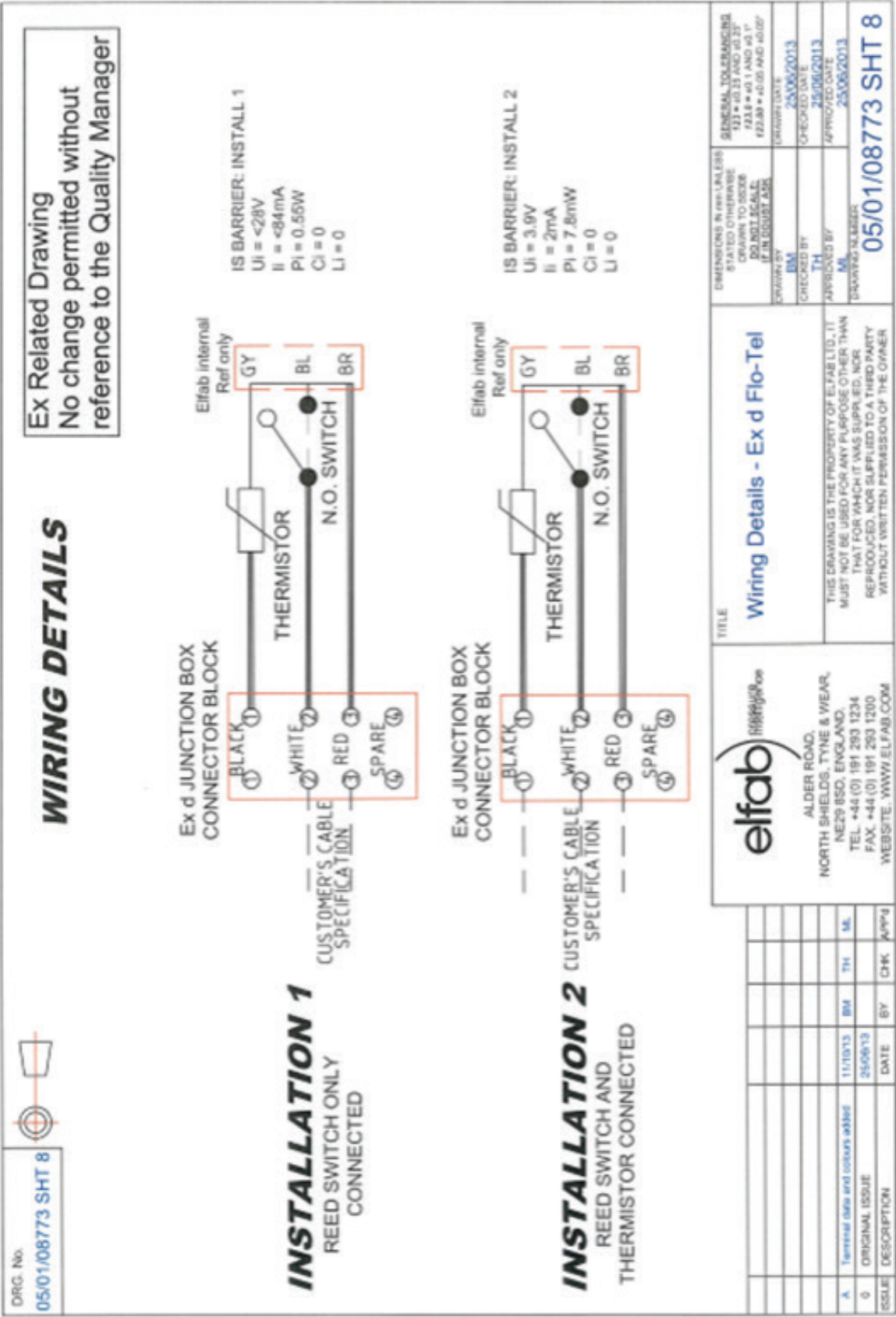
Related Products

Holders

REVERSE DISC HOLDER
FORWARD DISC HOLDER

Sensors and Installation Tools

FLO-TEL
TEST-TEL



elfab

ALDER ROAD,
NORTH SHIELDS, TYNE & WEAR,
NE29 8SD, ENGLAND,
TEL +44 (0) 191 293 1234
FAX +44 (0) 191 293 1200
WEBSITE: WWW.ELFAB.COM

Wiring Details - Ex d Flo-Tel

THIS DRAWING IS THE PROPERTY OF ELFAB LTD. IT
MUST NOT BE USED FOR ANY PURPOSE OTHER THAN
THAT FOR WHICH IT WAS SUPPLIED. NOR
REPRODUCED, NOR SUPPLIED TO A THIRD PARTY
WITHOUT WRITTEN PERMISSION OF THE OWNER

GENERAL TOLERANCING
UNLESS OTHERWISE
STATED TO SCALE
DO NOT SCALE
IF IN DOUBT ASK

25/06/2013
25/06/2013
25/06/2013

CREATED BY
BM

CHECKED BY
TH

APPROVED BY
ML

DRAWING NUMBER
05/01/08773 SHT 8

ISSUE	DESCRIPTION	DATE	BY	CHK	APP
A	Terminal data and colour coding	11/10/13	BM	TH	ML
0	ORIGINAL ISSUE	25/06/13			