

OTU

ONE-TIME-USE BRASS RUPTURE DISC PLUG

Dependable, inexpensive pressure relief that is easy to install and compatible with your OEM equipment



OsecoElfab's OTU brass pressure relief assemblies provide simple, cost-effective overpressure protection for OEM applications using compressed air, gas or high-pressure water systems.

The sealed unit comprises a brass body and a STD/STDV or CO/COV series rupture disk, available in a range of materials. Standard NPT thread connections and a muffled outlet make this assembly quick and easy to install. If an overpressure event occurs, the entire assembly is replaced.

OTU brass plugs are also fully customizable, with a range of inlet and outlet thread types and sizes, as well as various burst pressures. Every unit is leak-tested before it leaves the factory to ensure optimum performance.

Standard disc sizes	0.5" and 0.69"
Standard thread types	SAE, NPT
Burst Pressure	115 - 9500 psig
Operating Ratio	70% - 90%
Performance Tolerance	+/- 5% above 77 psig
Manufacturing Range	STD/CO \pm 5% CSD/CIRSC \pm 10%

**Let us help you with all
your pressure relief questions.**

US office | Broken Arrow
+1 (918) 258 5626 | info@osecoelfab.com

UK office | North Shields
+44 (0)191 293 1234 | uksales@osecoelfab.com

osecoelfab.com

**REQUEST A QUOTE FOR
THE OTU**



TECHNICAL SPECIFICATIONS



Standard disc sizes	0.5" and 0.69" (12.7mm and 17.5mm)
Disc type	STD, CO, CSD, CIRSC
Standard inlet types	NPT
Standard outlet types	Free Vent, SAE, NPT, Muffled
Burst pressure range	77 psig - 9,500 psig (5.3 barg - 655 barg)
Temperature range	500°F to 900°F (260°C to 482°C)
Standard materials	Body: Brass Disc: 316 Stainless Steel, Nickel, Inconel, Monel, Hastelloy C
Max. Operating Ratio	70% - 90%
Performance Tolerance	+/- 5%
Manufacturing Range	Contact your sales rep for your particular application
Leak tightness	100% bubble leak checked
Design Standards	Designed to meet ASME Section XIII standards

Certifications

ASME UD (STD-OTU)
CE

Related Products

Rupture Discs

CO
STD
CSD
CIRSC

Brass Rupture Disc Plugs

O4A
OE2

Burst Pressure Ranges

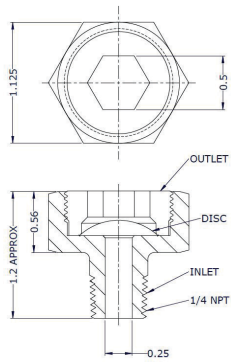
OTU Min/Max Burst Pressure @ 72° F / 22° C



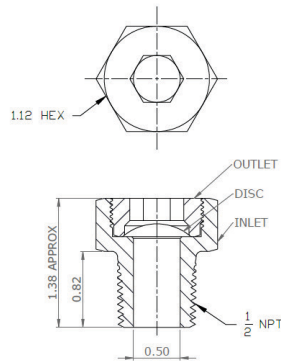
Disk Type	DISC MATERIAL (ALL WITH BRASS BODY)	Standard Disc (STD)	
		MIN psig (barg)	MAX psig (barg)
STD or STDV	Nickel	200 (13.79)	1000 (68.95)
	Monel	250 (17.24)	
	Inconel	325 (22.41)	
	316 Stainless Steel	455 (31.37)	
CO or COV	Nickel	77 (5.31)	700 (48.26)
	Monel	115 (7.93)	
	Inconel	115 (7.93)	
	316 Stainless Steel	115 (7.93)	

Maximum Temperature

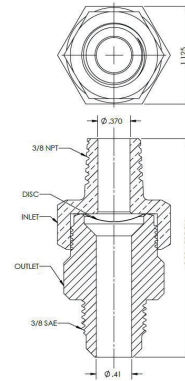
Disk Type	Disc Material (with brass body)	Maximum Temperature (°F)
STD or STDV	Nickel	750
	Monel	800
	Inconel	900
	316 Stainless Steel	900
CO or COV	Nickel	500
	Monel	
	Inconel	
	316 Stainless Steel	



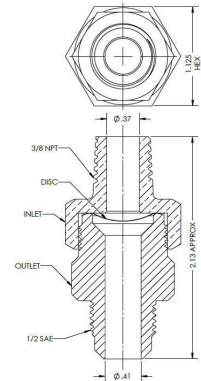
OTU-1



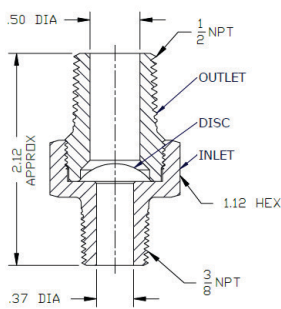
OTU-2



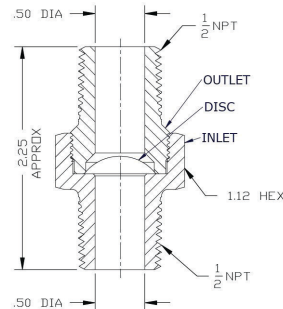
OTU-3



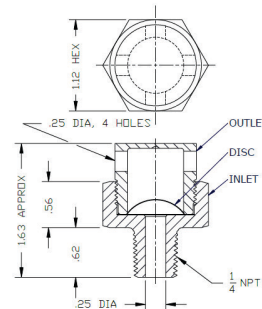
OTU-4



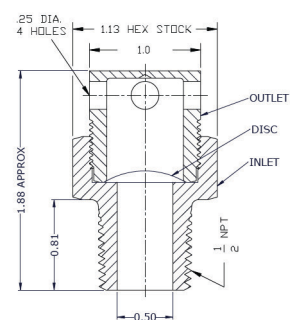
OTU-5



OTU-6



OTU-7



OTU-8

OTU CONFIGURATION

Assembly Number	Inlet	Outlet	Overall Height (inches)	Hex Across Flats (inches)
OTU-1	1/4-MPT	Free	1-3/16	1-1/8
OTU-2	1/2-MPT	Free	1-3/8	1-1/8
OTU-3	3/8-MPT	3/8-SAE	2	1-1/8
OTU-4	3/8-MPT	1/2-SAE	2-1/8	1-1/8
OTU-5	3/8-MPT	1/2-MPT	2-1/8	1-1/8
OTU-6	1/2-MPT	1/2-MPT	2-1/4	1-1/8
OTU-7	1/4-MPT	Muffled	1-5/8	1-1/8
OTU-8	1/2-MPT	Muffled	1-7/8	1-1/8