

# OE2

## CAPPED RUPTURE DISC PLUG

**A zero-maintenance, tamperproof brass and nickel capped disc and plug offering high operational performance and excellent leak tightness.**



OsecoElfab's OE2 is a capped disc and plug design using conventional flat or domed rupture discs. The unit plug is typically made from brass with a nickel disc. However, other materials are available on request.

Offering high operational performance and excellent leak tightness (up to  $10^{-4}$ cc/sec), the OE2 assemblies are ideal for a variety of industries, from aerospace to fire protection. The zero-maintenance design makes the plug easy to integrate with OEM equipment.

The fully automated production lines in our North Shields facility can rapidly produce large volumes of capped rupture disc assemblies. We manufacture them in a wide variety of sizes, designs and burst pressures. Alternatively, we also offer unique, custom-engineered solutions in line with our customers' design briefs.

<b>Standard disc sizes</b>	6, 8, 10, 11mm
<b>Standard thread sizes</b>	M12, M14, M16, M18
<b>Burst Pressure</b>	25 - 200 barg
<b>Operating Ratio</b>	85%
<b>Performance Tolerance</b>	+/- 5%

**Let us help you with all  
your pressure relief questions.**

**UK office | North Shields**

+44 (0)191 293 1234 | [uksales@osecoelfab.com](mailto:uksales@osecoelfab.com)

**US office | Broken Arrow**

+1 (918) 258 5626 | [info@osecoelfab.com](mailto:info@osecoelfab.com)

[osecoelfab.com](http://osecoelfab.com)

**REQUEST A QUOTE FOR  
THE OE2**



# TECHNICAL SPECIFICATIONS



Standard disc sizes*	6mm, 8mm, 10mm, 11mm
Disc type	Forward acting (tension loaded)
Disc connection to body	Capped brass (with/without copper seal)
Standard thread sizes*	M12, M14, M16, M18
Standard inlet thread types*	M12, M14, M16, M18
Standard outlet thread types*	Baffle or through
Burst pressure range	25 barg – 200 barg (360 psig – 2900 psig)
Temperature range	-70°C to 200°C (-94 to 392°F)
Standard materials	Disc: Nickel, Stainless Steel, Copper, Monel* Body: Brass
Max. Operating Ratio	85% of minimum burst pressure (55 barg – 200 barg)
Performance Tolerance	+/-5%
Fragmentation	May fragment, depending on design
Vacuum Service	Withstands full vacuum (14.7 psi) without separate vacuum support
Fluid compatibility	Gas service, vapor service, liquid service
Leak tightness	Helium leak-tested to $1 \times 10^{-4}$ cc-atm/sec**
Design Standards	Designed to meet ISO 4126-2:2019 and PED 2014/68/EU

\*Others available on request

\*\*Design dependent

## Certifications

CE

## Related Products

### Sensors

OE-Tel

### Rupture Disc Plugs

O4A

OE5

OE6

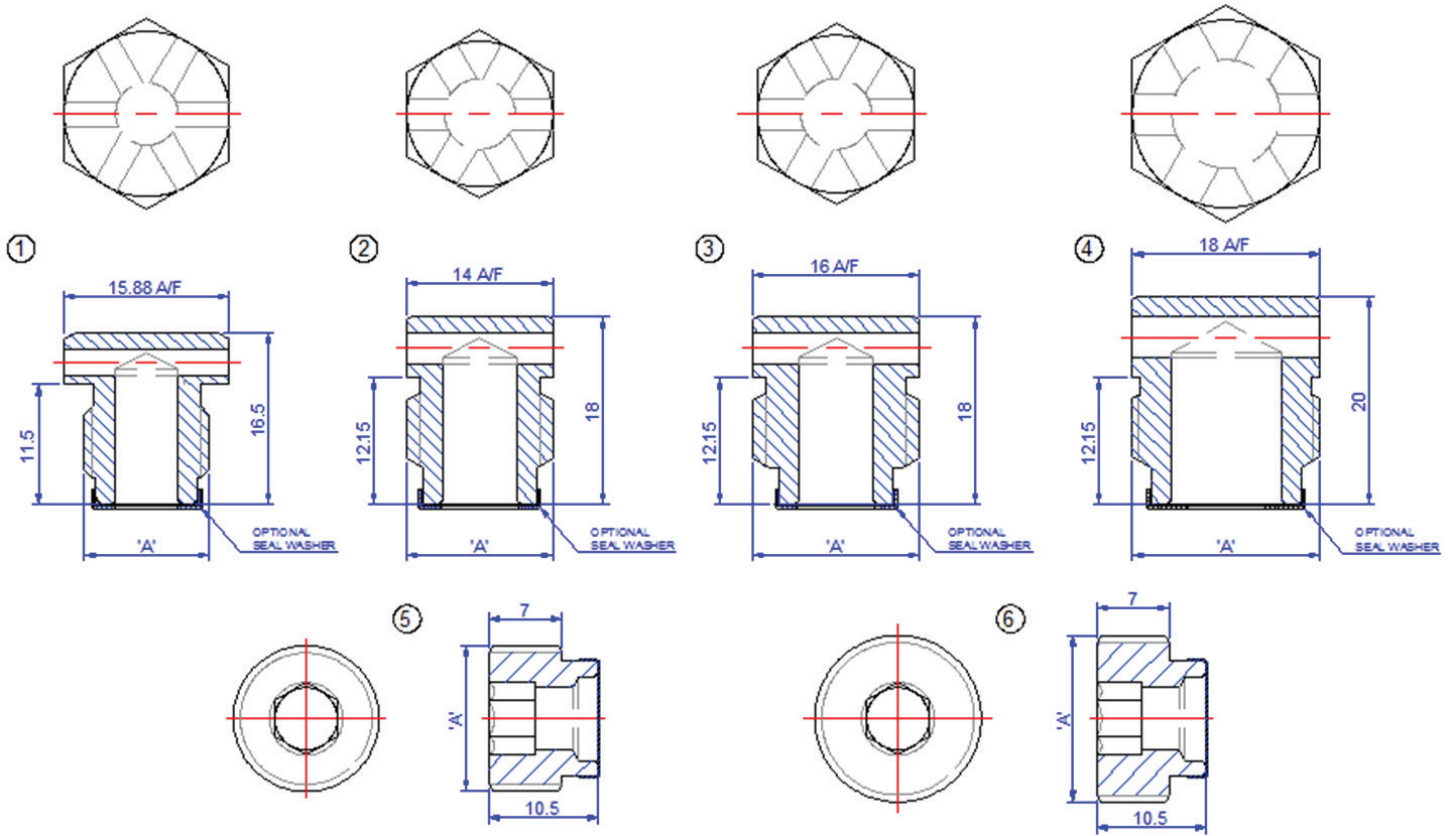
# Burst Pressure Ranges

OE2 Min/Max Burst Pressure @ 15-30° C / 59-86° F



SIZE		DISC MATERIAL*	MIN barg (psig)	MAX barg (psig)
DN (mm)	inches			
6	0.2	316 Stainless Steel Monel Nickel Copper Aluminium	86 (1250) 72.5 (1050) 58.5 (850) 31 (450) 72 (1050)	200 (2900)
8	0.3	316 Stainless Steel Monel Nickel Copper Aluminium	69 (1000) 55 (800) 45 (650) 23 (330) 55 (800)	200 (2900)
10	0.4	316 Stainless Steel Monel Nickel Copper Aluminium	55 (800) 44 (635) 34.5 (500) 18 (260) 44 (635)	200 (2900)
11	0.4	316 Stainless Steel Monel Nickel Copper Aluminium	52 (750) 39.5 (575) 31 (450) 16.5 (240) 39.5 (575)	200 (2900)

\*All with brass plug



Hex type plug (Items 1 to 4)

Item	THREAD 'A'	FFA (mm <sup>2</sup> )
1	M12 x 1	24.9
	M12 x 1.25	24.9
2	M14 x 1	39.6
	M14 x 1.25	39.6
3	M16 x 1	39.6
	M16 x 1.25	39.6
4	M18 x 1	71.6

Socket cap type plug (Items 5 and 6)

Item	THREAD 'A'	FFA (mm <sup>2</sup> )
5	M14 x 1.25-6g	23.27
6	M16 x 1.25	23.27