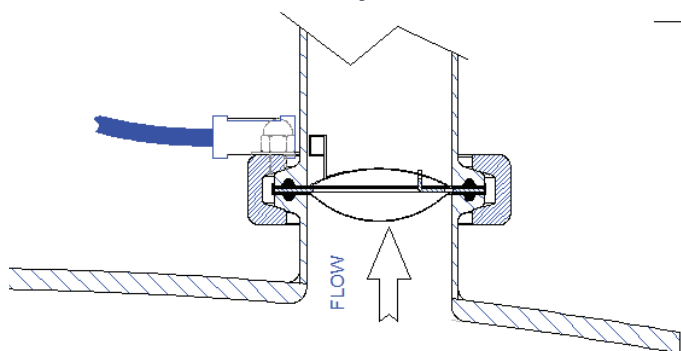


# TRI-CLAMPS

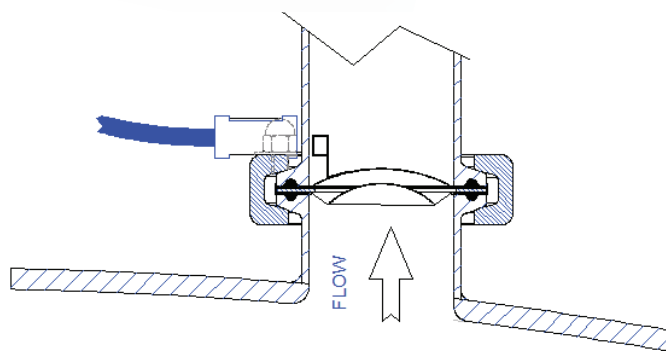
*Stainless Steel tri-clamps for use in biopharmaceutical processes, and sanitary, hygienic and aseptic conditions*



## Schematic of tri-clamps fitted with burst detection



VESSEL



VESSEL

Tri-clamps fitted with burst detection are suitable for the following discs:

- Pure-Gard
- Opti-Gard Ferrule
- Opti-Gard Ferrule SoLo
- BioFlat Composite
- Safe-Gard Ferrule

**Let us help you with all  
your pressure relief questions.**

**US office** | Broken Arrow

+1 (918) 258 5626 | [info@osecoelfab.com](mailto:info@osecoelfab.com)

**UK office** | North Shields

+44 (0)191 293 1234 | [uksales@osecoelfab.com](mailto:uksales@osecoelfab.com)

[osecoelfab.com](http://osecoelfab.com)

