





# INSTALLATION INSTRUCTIONS

## OSECO SAFETY CARTRIDGE


**SAFETY EQUIPMENT**


 -Safety Goggles


 -Gloves

 -Other  
*as required by facility*

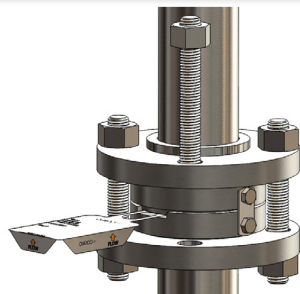
**TOOLS & MATERIALS**

 -Cleaning Solvent  
*compatible with service media*

 -Torque Wrench

 -Torque Wrench

### 1 Disassembly



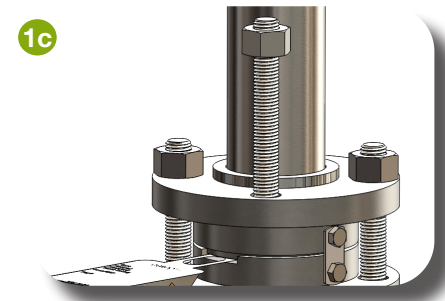
### 2 Placement & Alignment



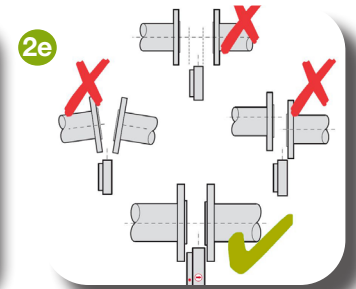
### 3 Torquing & Inspection



- 1a** Perform lockout & tagout procedures
- 1b** Depressurize system
- 1c** Loosen nuts, remove studs as needed, inspect for rust, galling, and other damage
- 1d** Remove assembly



- 2a** Clean flange surfaces, inspect for damage
- 2b** Place gaskets and Safety Cartridge between flanges
- 2c** Check flow arrows
- 2d** Lubricate Studs & Nuts, replace & finger tighten
- 2e** Ensure proper piping alignment



- 3a** Determine Torque:
  - follow gasket manufacturer requirement
  - or reference ASME PCC-1
- 3b** Torque evenly, in increments, up to 100%, following star pattern
- 3c** Follow facility's testing & inspection procedures

