



WEATHERBOARDS | BOX CORNERS | FACING BOARDS
FASCIA | SCRIBERS | WINDOW SILLS



www.niagara.nz



Features & BENEFITS



A BRAND YOU CAN TRUST

Niagara has been sawmilling since 1935 and has a proud reputation in the timber industry



SUSTAINABLE

Environmentally responsible FSC certified pine



WARRANTY

25-year comprehensive owner transferable warranty



PREPRIMED

Two coats of Resene Alkyd based True-Prime primer on all finger jointed weatherboards



MADE IN NEW ZEALAND

Available in a range of profiles and widths as a complete system, proudly made locally.



FINGER JOINTED

Enhanced strength and stability



DEFECT FREE PINE

Premium grade FJ New Zealand radiata pine



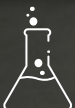
EASY TO SPECIFY

A free technical manual is available in store and online with a comprehensive set of drawings



LIGHTWEIGHT

Lightweight & durable cladding solution



TREATMENT

New generation H3.1 organic preservative system which is safe and biodegradable



DURABLE

Designed to stand New Zealand's tough weather conditions



COST EFFECTIVE

Quality range at a great price



Bevel Back

WEATHERBOARDS

New Zealand was built on timber, continue the story with the Envira Weatherboard System. Create clean horizontal shadow lines with the Bevel Back Profile. Whether you prefer a narrow or wide profile, Envira offers versatility and style, making it the ideal choice for any new construction project.





FINGER JOINTED



WARRANTY



H3.1 TREATMENT



PREPRIMED

PROFILES

Bevel back weatherboards are available in a range of sizes

GRADE	SIZES		LENGTH
Finger jointed	✓ 142 x 18 mm	✓ 187 x 18 mm	6.1 m
Finger jointed	✓ 230 x 18 mm		6.1 m
Dressing grade	✓ 142 x 21 mm	✓ 144 x 21 mm	Random
Dressing grade	✓ 190 x 21 mm		Random

Bevel Back 142 MM WIDE

The Envira 142mm profile is often used on smaller dwellings due to the tight shadow lines that can be achieved.

Bevel Back 187 MM WIDE

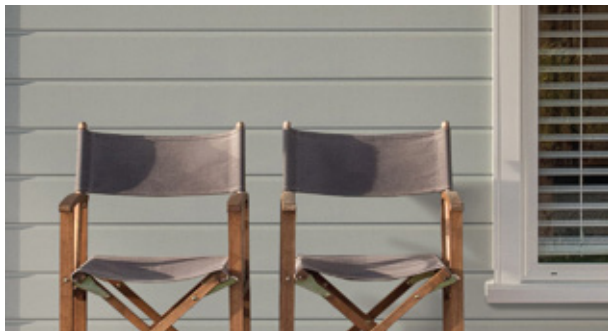
A classic choice among New Zealanders, the Envira 187mm bevel back profile is perfect for larger homes and multi-level dwellings.



Rusticated

WEATHERBOARDS

The rusticated weatherboard has remained a popular choice for over 150 years in New Zealand, making it an ideal option for cottage renovations or modern new builds. The Envira rusticated profile creates a timeless style.



FINGER JOINTED

WARRANTY

H3.1 TREATMENT

PREPRIMED

PROFILES

Rusticated weatherboards are available in a range of sizes

GRADE	SIZES		LENGTH
Finger jointed	✓ 142 x 18 mm	✓ 187 x 18 mm	6.1 m
Finger jointed	✓ 230 x 18 mm		6.1 m
Dressing grade	✓ 142 x 21 mm	✓ 190 x 21 mm	Random

Rusticated 142 MM WIDE

Envira rusticated captures the look of classic villa and colonial-style homes.

Rusticated 187 MM WIDE

Wide boards are ideal for large walls, these boards create a clean contemporary look on a classic profile.



Shiplap

WEATHERBOARDS

Envira's vertical shiplap weatherboards offer a versatile design option that adds a unique touch to commercial buildings or residential homes, seamlessly blending with both traditional and modern architectural designs.

SHIPLAP V GROOVE

A traditional profile suitable for both horizontal & vertical applications.

SHIPLAP SQUARE GROOVE

A modern profile suitable for vertical applications only.



FINGER JOINTED



WARRANTY



H3.1 TREATMENT



PREPRIMED

PROFILES

Shiplap weatherboards are available in a range of sizes

PROFILE	GRADE	SIZES	LENGTH
V groove	Finger jointed	✓ 142 x 18 mm	6.1 m
V groove	Finger jointed	✓ 180 x 18 mm	6.1 m
Square groove	Finger jointed	✓ 140 x 18 mm	5.4 m
Square groove	Finger jointed	✓ 180 x 18 mm	5.4 m
Square groove	Finger jointed	✓ 90 x 18 mm	5.4 m



Shiplap 180 MM WIDE

The 180mm shiplap profile is rapidly gaining in popularity and is a great alternative to a traditional cedar cladding.



Shiplap MULTI-WIDTH BOARDS

Get creative and customise your style with the square grooved shiplap available in widths of 90mm, 140mm, and 180mm, allowing for endless design possibilities.

Sustainable PRODUCTS

New Zealand was built on timber, continue the story with the Envira Weatherboard System.

Envira is the sustainable cladding of choice for New Zealand homes, proudly manufactured by Niagara.



All timber is sourced from sustainable New Zealand Radiata Pine, with 99% of each log utilised.

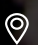
All by-products ranging from bark to shavings are utilised to produce a variety of garden products and carbon neutral fuels.





www.niagara.nz


SOUTH ISLAND SALES & DISTRIBUTION

 **0800 36 78 46**
 sisales@niagara.nz

 145 Alford Forest Road
Ashburton 7700, New Zealand

NORTH ISLAND SALES & DISTRIBUTION

 **0800 36 78 46**
 nisales@niagara.nz

 24 - 26 Oliver Street,
Cambridge 3434, New Zealand