



WEATHERBOARDS | BOX CORNERS | FACING BOARDS  
FASCIA | SCRIBERS | WINDOW SILLS







# *Sustainable* **PRODUCTS**

New Zealand was built on timber, continue the story with the Envira Weatherboard System.

Envira is the sustainable cladding of choice for New Zealand homes, proudly manufactured by Niagara.

All timber is sourced from sustainable New Zealand Radiata Pine, with 99% of each log utilised.

All by-products ranging from bark to shavings are utilised to produce a variety of garden products and carbon neutral fuels.



The mark of  
responsible forestry







# Features & BENEFITS



## A BRAND YOU CAN TRUST

Niagara has been sawmilling since 1935 and has a proud reputation in the timber industry



## SUSTAINABLE

Environmentally responsible  
FSC certified pine



## WARRANTY

25-year comprehensive  
owner transferable warranty



## PREPRIMED

Two coats of Resene Alkyd  
based True-Prime primer on all  
finger jointed weatherboards



## DURABLE

Designed to stand New Zealand's  
tough weather conditions



## FINGER JOINTED

Enhanced strength  
and stability



## EASY TO SPECIFY

A free technical manual is  
available in store and online with  
a comprehensive set of drawings



## COST EFFECTIVE

Quality range at  
a great price



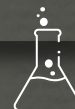
## DEFECT FREE PINE

Premium grade  
FJ New Zealand  
radiata pine



## MADE IN NEW ZEALAND

Available in a range of profiles  
and widths as a complete system,  
proudly made locally



## TREATMENT

New generation H3.1 organic  
preservative system which is  
safe and biodegradable



## LIGHTWEIGHT

Lightweight & durable  
cladding solution



# Bevel Back WEATHERBOARDS

New Zealand was built on timber, continue the story with the Envira Weatherboard System. Create clean horizontal shadow lines with the bevel back profile. With both narrow and wide profiles available Envira is the perfect option for any new build.







## PROFILES

### *Bevel Back* 142 MM WIDE

The Envira 142mm profile is often used on smaller dwellings due to the tight shadow lines that can be achieved.



### *Bevel Back* 187 MM WIDE

The Envira 187mm bevel back profile is the perennial New Zealand favourite perfect for larger homes and multi level dwellings.

PROFILE	FINISHED SIZE	LENGTH	GRADE	TREATMENT	FINISHING
Bevel Back	142 x 18 mm	6.1m	Finger jointed	H3.1	Primed
Bevel Back	187 x 18 mm	6.1m	Finger jointed	H3.1	Primed
Bevel Back	230 x 18 mm	6.1m	Finger jointed	H3.1	Primed
Bevel Back	142 x 21 mm	Random	Dressing grade	H3.1	Primed
Bevel Back	144 x 21 mm	Random	Dressing grade	H3.1	Primed
Bevel Back	190 x 21 mm	Random	Dressing grade	H3.1	Primed



# *Rusticated* WEATHERBOARDS

For over 150 years the rusticated weatherboard has been a perennial favourite throughout New Zealand. Whether it's a cottage renovation, or a modern new build the Envira rusticated profile creates timeless style.







## PROFILES

### *Rusticated* 142 MM WIDE

Envira rusticated captures the look of classic villa and colonial-style homes.



### *Rusticated* 187 MM WIDE

Wide boards are ideal for large walls, these boards create a clean contemporary look on a classic profile.

PROFILE	FINISHED SIZE	LENGTH	GRADE	TREATMENT	FINISHING
Rusticated	142 x 18 mm	6.1m	Finger jointed	H3.1	Primed
Rusticated	187 x 18 mm	6.1m	Finger jointed	H3.1	Primed
Rusticated	230 x 18 mm	6.1m	Finger jointed	H3.1	Primed
Rusticated	142 x 21 mm	Random	Dressing grade	H3.1	Primed
Rusticated	190 x 21 mm	Random	Dressing grade	H3.1	Primed



# *Shiplap* WEATHERBOARDS

The Envira shiplap multi-width profiles create a modern take on traditional sawn timber product. With various widths available you can create your own personalised design. Great for feature walls or a total cladding solution.

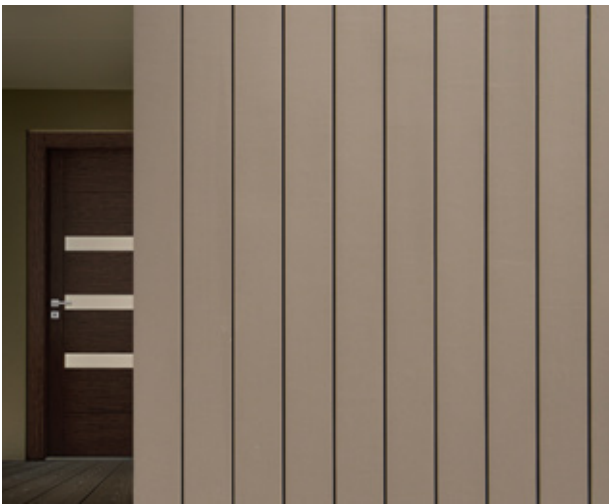






## Shiplap 142 MM WIDE

The vertical lines of Envira shiplap are a design feature for any modern home.



# Shiplap

## PROFILES

### SHIPLAP V GROOVE

A traditional profile suitable for both horizontal & vertical applications.

### SHIPLAP SQUARE GROOVE

A modern profile suitable for vertical applications only.

For horizontal application please use same installation instructions as rusticated weatherboards.



## Shiplap 180 MM WIDE

The 180mm shiplap profile is rapidly gaining in popularity and is a great alternative to a traditional cedar cladding.

## Shiplap MULTI-WIDTH BOARDS

With 90mm, 140mm and 180mm widths available the square grooved shiplap can be mixed to create your own unique design.



PROFILE	FINISHED SIZE	LENGTH	GRADE	TREATMENT	FINISHING
V groove	142 x 18 mm	6.1 m	Finger jointed	H3.1	Primed
V groove	180 x 18 mm	6.1 m	Finger jointed	H3.1	Primed
Square groove	140 x 18 mm	5.4 m	Finger jointed	H3.1	Primed
Square groove	180 x 18 mm	5.4 m	Finger jointed	H3.1	Primed
Square groove	90 x 18 mm	5.4 m	Finger jointed	H3.1	Primed



# Choose ENVIRA AS A COMPLETE WEATHERBOARD SYSTEM

Envira's Weatherboard System will provide a great finish to your new home and save you money by simplifying the building process.

Three styles of weatherboards are offered in the Envira range: bevel back, rusticated or shiplap, with a component system to match including boxed corners, corner soakers, scribes, window sills and facing boards.

Everything you need to complete the cladding of your home is available as part of the Envira Weatherboard System, meaning a weather-tight finish which lasts, as well as significant savings on installation/labour time and costs.

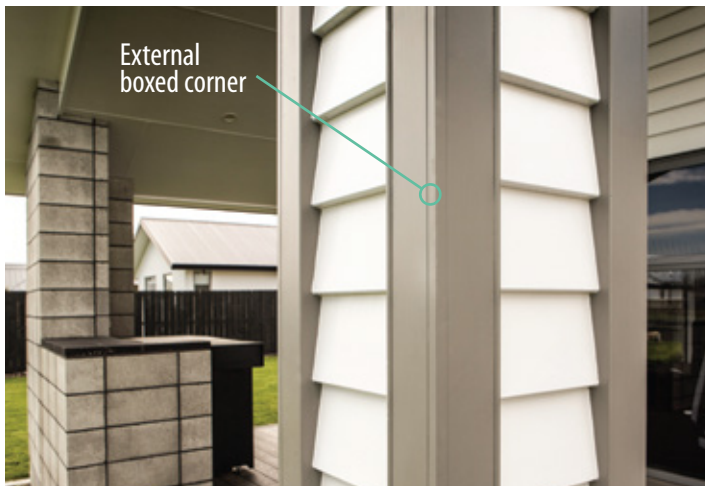






# Component SYSTEM

Envira is a complete weatherboard system that includes all components for a perfect finish.  
Envira components are easy and quick to install saving you time and money.



## EXTERNAL BOXED CORNER

<b>Size</b>	<b>Length</b>
100 x 100 mm	5.4 m



## INTERNAL BOXED CORNER

<b>Size</b>	<b>Length</b>
100 x 100 mm	5.4 m



## ALUMINIUM CORNER SOAKER

Aluminium etched corner soakers are available for bevel back weatherboards.





### BEVEL BACK SCRIBER

Size	Length
40 x 18 mm	3.0 m
40 x 10 mm	3.0 m



### RUSTICATED SCRIBER

Size	Length
27 x 18 mm	3.0 m



### FACING BOARDS

Size	Length
66 x 18 mm	5.4 m
90 x 10 mm	5.4 m
115 x 18 mm	5.4 m



### WINDOW SILL

Size	Length
90 x 42 mm	5.4 m
65 x 42 mm	5.4 m



### HEAD TRIM

Size	Length
82 x 38 mm	5.4 m



### CAVITY BATTEN

Size	Length
44 x 20 mm	5.4 m



**ENVIRA IS PROUDLY PRODUCED  
IN NEW ZEALAND BY NIAGARA**



[www.niagara.nz](http://www.niagara.nz)







[www.niagara.nz](http://www.niagara.nz)





[www.niagara.nz](http://www.niagara.nz)







*Follow us on Pinterest* 

[www.niagara.nz](http://www.niagara.nz)

**SOUTH ISLAND SALES & DISTRIBUTION**



**0800 36 78 46**  
[sisales@niagara.nz](mailto:sisales@niagara.nz)



145 Alford Forest Road  
Ashburton 7700, New Zealand

**NORTH ISLAND SALES & DISTRIBUTION**



**0800 36 78 46**  
[nisales@niagara.nz](mailto:nisales@niagara.nz)



162 Queen Street,  
Cambridge 3434, New Zealand