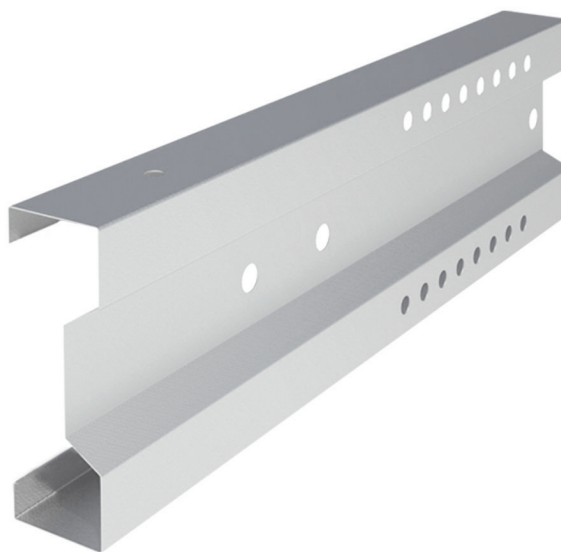
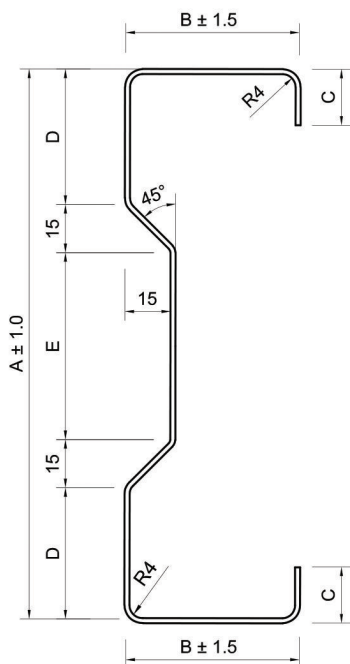


SIGMA section purlins are accurately roll formed from high strength steel to provide an efficient, light weight and economical roofing and cladding support system for structural steel buildings. The thickness and height of the purlin selected depend on span length and loads.



Nominal Size	Dim. "A"	Dim. "B"	Dim. "C"	MATERIAL THICKNESS									
				1.50	1.70	1.90	2.00	2.25	2.65	3.00	3.35	3.75	4.00
400 * 90	400	90	25						●	●	●	●	●
360 * 90	360	90	25					●	●	●	●	●	●
300 * 80	300	80	25				●	●	●	●	●	●	●
260 * 80	260	80	22			●	●	●	●	●	●	●	●
200 * 65	200	65	22		●	●	●	●	●	●	●		
170 * 60	170	60	22	●	●	●	●	●	●	●			

Dim. "D" = 48 Min. to 100 Max.

Dim. "E" = 40 Min. to 170 Max.

Dim in mm.

Material: Galvanized/Black iron

Steel Grade S250, S350 and S420.

Blank Width are based on 2.5 mm thickness.

Dim "C" varies with blank width and Material thickness.

Tolerances: **According to EN 10162.**

BOW 1 mm per meter

CAMBER 1 mm per meter

TWIST 1 mm per meter

FLARE ±3 mm within 200 mm of each end